



WYNDHAM COLLEGE

YEAR 12

2025

Assessment Handbook

A school as unique as you are!

Table of Contents

COURSE GUIDE AND ASSESSMENT POLICY

A.	Eligibility for the Award of an HSC	2
1.	Study of an Appropriate Pattern of Study	2
2.	Complete Courses Satisfactorily	3
B.	Assessment Guidelines	3
1.	General	3
2.	Notification of Tasks	4
3.	VET Mandatory Work Placement	4
4.	Completion of Tasks	4
5.	School Assessments under Examination Conditions	5
6.	Procedures and Code of Conduct	5
7.	Appeals and Reviews	6
8.	Malpractice	6
9.	Non-Serious Attempt	6
10.	“N” Determinations	6
11.	Warnings	7
	Sample Warning Letter	8
	Student Appeal Form Illness / Misadventure	10
	Procedures to Follow if Assessment Tasks are Missed	11
	Sample assessment cover page.....	12
	Policy and general guidelines for the use of Generative AI (GAI) in assessment including malpractice at Wyndham College.	12
	Yearly planner- All assessments per week.....	13

HSC SUBJECT ASSESSMENT SCHEDULES A-Z

HSC Courses, Vocational Courses and Endorsed Course Guide and Assessment Policy

COURSE GUIDE AND ASSESSMENT POLICY

A. ELIGIBILITY FOR THE AWARD OF AN HSC

To be eligible for the HSC, you must:

- meet the requirements for a RoSA or equivalent recognised by NESA
- attend a NSW government school, an accredited non-government school, TAFE or a NESA-recognised school outside NSW
- complete [HSC: All My Own Work](#) (or its equivalent), unless entered in a pattern of study comprising only Life Skills courses for Years 11 and 12
- satisfactorily complete courses in a Year 11 and Year 12 pattern of study required by NESA (detailed below)
- demonstrate a [minimum standard of literacy and numeracy](#) of at least Level 3, by sitting for the online tests in reading, writing and numeracy
- sit for and make a serious attempt at the required HSC exams.

1. Study of an Appropriate Pattern of Study

You must satisfactorily complete:

- a preliminary pattern of study that includes at least 12 units
- an HSC pattern of study that includes at least 10 units.

Both patterns of study must include at least:

- 6 units of Board Developed Courses
- 2 units of a Board Developed Course in English
- 3 courses of 2 or more units (either Board Developed or Board Endorsed Courses)
- 4 subjects.

Some courses have certain rules and prerequisites, for example:

- you can enrol in an extension course, only if you are enrolled in the corresponding 2-unit course
- where courses have an optional exam, you can enrol in the optional exam, only if you have enrolled in the corresponding course (or in the case of VET, the 240-hour or 360-hour course where applicable)
- you cannot do more than one non-extension course from a subject (eg you cannot do Mathematics Standard and Mathematics Advanced).

There are [specific eligibility rules](#) for some Languages courses including all [Language]* Beginners courses and some [Language]* Continuers and [Language]* in Context courses.

* insert relevant language, eg Chinese

Additional rules apply if you want an ATAR. The [ATAR eligibility rules](#) are determined by UAC.

NESA advises students of their ATAR eligibility on behalf of [UAC](#). For example, the HSC pattern of study must include 10 units of examinable courses including English.

2. Complete Courses Satisfactorily

For most Board Developed Courses with HSC exams, school-based assessment makes up 50% of your HSC mark and is shown on your RoSA (see [6.1 Getting your HSC results](#)).

If you study English Studies, Mathematics Standard 1 or Numeracy, your final result will be a grade (A to E) submitted by your school. If you do the optional HSC exam for English Studies or Mathematics Standard 1 course, your final result will be an exam mark and an HSC Performance band. Your final HSC mark will be the same as your exam mark.

Schools prepare and run an assessment program for each course, in line with NESA requirements. NESA determines which course components are assessed, and how they are weighted in the assessment and reporting documents for [each syllabus](#).

Schools set individual assessment tasks and decide due dates and weightings for each. These tasks measure knowledge, skills and understanding for a wide range of outcomes. They may include tests, written assignments, practical activities, fieldwork and projects. When you start your HSC courses, your school must give you details of your assessment schedule, including weightings and due dates.

All work that you present in any HSC school-based assessment task or exam must be your own. Malpractice, including plagiarism, could mean that you receive zero marks for that task or exam (see [2.1 Maintaining honesty and integrity](#) and [2.2 Understanding malpractice](#)).

A student will be considered to have satisfactorily completed a course if, in the Principal's view, there is sufficient evidence the student has:

- (a) followed the course developed or endorsed by NESA
- (b) applied themselves with diligence and sustained effort to the set tasks and experiences provided in the course by the school
- (c) achieved some or all of the course outcomes
- (d) made a genuine attempt to complete course requirements
- (e) in addition to any other set tasks and experiences in any course, completed assessment tasks that contribute in excess of 50 percent of available marks.
- (f) sat for and made a genuine attempt at examinations

It should be noted that, as a result of absence from a course, the principal may determine that course completion criteria may not be met.

Students whose attendance is called into question will be required to prove to the principal's satisfaction, following a review of their performance, that they are meeting the course completion criteria.

B. ASSESSMENT GUIDELINES

1. General

Assessment tasks indicate achievement over a wide range of syllabus outcomes. Students will receive the following advice about assessment in each course before assessment begins.

- (a) the practical and written tasks, such as tests, assignments and projects, on which their assessments are to be based.
- (b) the weighting to be allocated to each task.
- (c) an indication as to when the task will be held.

2. Notification Of Tasks

In addition to the schedule of assessment tasks, the college will provide adequate notice of the precise timing of each assessment task. Generally, at least two weeks' notice of the details of a task will be given and any change to the task that may occur.

NB If a student is absent from school for a day or a session it is the student's responsibility to check if any information relating to an Assessment Task has been communicated.

3. VET Mandatory Work Placement

As with all other courses, students undertaking VET courses may be deemed to have either completed or not completed course requirements. It should be noted that if a student fails to undertake any mandatory work placement component it may be determined that the student has not made a genuine attempt to complete course requirements. In this case the principal can indicate that the course has not been satisfactorily completed and the student may be issued with an "N" determination.

4. Completion Of Tasks

NESA hopes that, through the process of continuing assessment, it will be able to reward sustained effort on the part of senior students and sample a wider (and, therefore, more accurate) range of student attainments. A sound performance in assessment tasks over the Preliminary course also helps to prepare students for the actual HSC which will modify their school assessment. It should be realised that the assessment program places a responsibility upon students to complete the assessment tasks. At Wyndham College the following policies towards missed tasks have been determined.

- i. Students who **complete** all aspects of the assessment task and **submit it** on or **before** the due date are eligible for the full mark allocated for the task.
- ii. Students who **attend** an assessment task which is to be completed at school are eligible for the full mark allocated for the task.
- iii. Students who **fail to submit** an assessment task by the due date **must be given zero** if they have no valid reason.
- iv. Students who **fail to attend** on the specified date an assessment task which is to be completed at school **must be given zero** if they have no valid reason.
- v. Students who fail to submit an assessment task by the due date, but who have a valid reason (such as sickness or approved leave validated by appropriate documentation) are eligible for the full mark allocated to the task if they have completed the task. A medical certificate may not be accepted as excusing late submission of tasks **where the task was issued well in advance of the illness** and the medical certificate shows that the student was not incapacitated for a large part of that time. You should submit whatever progress work has been completed at that time e.g. drafts, plans, rough work etc. This will be assessed by the teacher and may be awarded marks. PLEASE NOTE: YOU MUST SUBMIT THE TASK ON THE DAY YOU RETURN TO SCHOOL.
- vi. Students who **fail to attend** an assessment task which is to be completed at school, but who **have a valid reason** (e.g. sickness) must be given an opportunity to do the task or an equivalent task at a later date. In exceptional circumstances it may be necessary to give a mark based on the student's other assessment tasks. These students are eligible for the **full mark** allocated to the task.
- vii. Students who **submit** an **incomplete** task on or before the due date are to be allocated a mark. This mark is to be based on the proportion of the task completed. The task does **not** automatically receive a zero mark. As an example, if the task had six equally weighted components and a student attempted only three of these, that student would be eligible for up to 50% of the mark allocated to the task.
- viii. If a student believes factors beyond their control, e.g. sickness or family misfortune, have affected their ability to do their best on a task they may apply for an extension by seeing the appropriate Head Teacher at least 24 hours before the due date. NO EXTENSION WILL BE GRANTED TO APPLICATIONS RECEIVED ON THE DAY A TASK IS DUE.

- ix. If a student submits a task which is deemed to be a non-serious attempt by the teacher, then a zero mark will be awarded.
- x. During examination sessions, any portable electronic devices, including iPods, are not permitted and only NESA approved equipment, such as calculators, may be used.
- xi. Hard copies (not computer files) of written task responses are to be submitted unless the task stipulates otherwise. It is the student's responsibility to have work printed in time for submission.
- xii. Printing of major works can be organised through the school provided it is submitted one week before the due date.
- xiii. Computer / Printer failure cannot be used as a reason to submit work late.

Where a student is going to be absent, the student or parent/guardian should contact the Head Teacher or class teacher if possible, before the task takes place. If unexpectedly absent on the day of the task the student should phone the school and inform the Deputy Principal, or the Head Teacher of the subject. Workplacement is not a valid reason to submit work late. All students on Workplacement must make arrangements to submit the work by the due date.

5. School Assessments under Examination Conditions

In school assessments are often carried out under examination conditions. Wyndham College uses examination procedures modelled on those used for NESA external examinations. The majority of students meet expectations. Students need to be aware of the examination Procedures and Code of Conduct. They ensure the smooth running of examinations and an environment in which all students are able to respond to the best of their ability without disruption from others.

6. Procedures and Code of Conduct

- Wear school uniform. This assists the supervisor identify you as a student of this campus.
- Bring all necessary equipment in a CLEAR ZIP LOCK BAG or CLEAR PENCIL CASE. Black pens, pencil, pencil sharpener, eraser, highlighter and ruler marked in mms and cms are allowed in ALL examinations.
- For examinations requiring a calculator, use only a [NESA approved calculator](#). Make sure it is fully charged.
- You may bring a clear bottle of water into the examination; you cannot leave to refill it.
- Supervisors have the right to inspect any equipment you bring into the examination room.
- Arrive at the exam room 20 minutes before examination start time. It can take some time to find your seat. A seating map will be placed on the outside of the HALL to help you.
- Organise your transport to be on time for examinations.
- If you arrive late, entry into the examination will be at the supervisors' discretion.
- Sit at your allocated desk. Do not swap name place cards.
- Remove your watch and place it in clear view on the desk in front of you. It cannot be a programmable watch.
- When instructed, thoroughly check your examination paper – it is possible that pages are missing or there has been an error in the printing.
- Reading time is for reading only. NO writing or highlighting may be undertaken during reading time.
- Read instructions carefully, noting requirements for the use of answer booklets.
- Supervisors are NOT able to interpret questions.
- Write your name or NESA number, as instructed by the supervisor, on every page of your answer booklet.
- Write in black or blue pen, preferably black.
- Stop writing immediately you are instructed to do so.
- Arrange completed answers according to supervisor's instructions.
- Do not remove examination papers from the examination room.
- Only leave the examination room when the supervisor says it is OK to do so. Leave immediately, when instructed to do so.
- If you are ill or a problem exists during the examination notify the supervisor immediately, by quietly raising your hand.

Students must NOT:

- Borrow equipment.
- Take mobile phones or programmable watches or other electronic devices into the examination room.
- Speak or communicate to anyone other than a supervisor during the examination. Behave in a manner that is likely to disturb or disrupt other students.
- Smoke, eat or come to examinations under the influence of alcohol or illegal drugs.
- Try to cheat or participate in any form of malpractice. Cheating or malpractice may result in zero marks being awarded and an 'N' determination issued.

If you are ill or have a major problem on the morning of the examination:

- Notify your Year Deputy or the front office (9208 7100)) as soon as possible, and submit an
- Illness/misadventure application as soon as you return to school.
- Note: Illness/misadventure appeals require a Medical Certificate or relevant official misadventure paperwork.
- Rescheduled examinations must be completed DURING the examination period unless there are extenuating circumstances.

7. Appeals and Reviews

Where students are dissatisfied with any aspect of the assessment procedure, they should in the first instance approach the Head Teacher of the subject concerned. If the problem cannot be resolved at the faculty level, it may be referred to the Assessment Review Committee (Principal, Deputy of the Year not concerned and the Head Teacher Secondary Studies), who will convene to consider the particular case.

8. Malpractice

Students who cheat in any way, including plagiarism, make a non-serious attempt, or truant for an assessment task will score zero for the task. In addition, the task will be recorded as a non-attempt in terms of the requirement that students complete tasks which must total more than 50% of available marks. Note: **Cheating occurs when a student attempts to gain an unfair advantage.** The Principal will make all such judgements in consultation with the Review Committee. Plagiarism is the submitting of work that is not wholly your own, e.g. submitting slabs of text from the internet or a textbook.

9. Non-Serious Attempt

Students studying a Preliminary course must make a genuine attempt to complete course requirements. It is a matter for the teacher's professional judgment to determine whether a student has made a genuine attempt to complete these requirements.

Students who do not make a genuine attempt **must be given zero** and will be required to complete a substitute task.

In the case of competency-based courses, where a student has not successfully completed any units of competency, it is a matter for the teacher's professional judgment to determine whether the attempts made by the student to complete the course are genuine.

Where students are studying a Preliminary course that includes a requisite examination, students must sit for and make a genuine attempt at the examination. If it is determined that a student has not made a genuine attempt to complete course requirements, the principal must indicate on the appropriate documentation that the course has not been satisfactorily completed.

10. "N" Determinations

NESA has delegated to principals the authority to determine if students seeking the award of the Higher School Certificate at their school have satisfactorily completed each Developed and / or Endorsed Course in which they are enrolled in accordance with the requirements issued by NESA.

Principals therefore will determine if there is sufficient evidence that each student has applied themselves with diligence and sustained effort to the set tasks and experiences provided in the course by the school.

Principals may determine an appropriate attendance pattern(s) that will allow each student to achieve the outcomes of each course being studied. **Principals may determine that, as a result of absence, the course completion criteria may not be met.** Clearly, absences will be regarded seriously by principals who will give students early warning of the consequences of such absences. Warning letters will relate the student's absence to the non-completion of course requirements.

11. Warnings

If at any time it appears that a student is at risk of being given an "N" (No completion of course requirements) determination in any course, including VET courses, the principal will warn the student as soon as possible and advise the parent or guardian (if the student is under 18 years of age) in writing. This warning will be given in time for the problem to be corrected and will provide advice about the possible consequences of an "N" determination in a course on Higher School Certificate eligibility.

Students who have not complied with the requirements for satisfactory completion of a course at the time of finalising assessments cannot be regarded as having satisfactorily completed the course.

Planning for exams and getting your HSC timetable

Check Students Online for your personal HSC exam timetable

We publish the [HSC exam timetable on our website](#) in Term 2. You can get your personal timetable in [Students Online](#). Check that all your exams appear and tell your school immediately if any courses are missing. Be especially careful with courses with similar names, such as the different Mathematics courses, and ensure the correct course appears on your timetable. Check your exam centre location and make sure it is correct.

If the published HSC timetable lists an exam clash for you, both you and your principal will have been notified by email. You will be able to see the adjustment in your personal timetable. Please contact your school immediately if there is an error.

You must read your timetable carefully. If you miss an exam because you misread the timetable, contact your principal immediately. You cannot apply for illness/misadventure on these grounds (for further information, see [5.1 Attending your exams](#)).

If you change any courses during the year, you must be aware of the updates to your personal timetable on [Students Online](#). You cannot apply for illness/misadventure due to having an outdated timetable.

Sample Warning Letter



WYNDHAM COLLEGE

Nirimba Education Precinct
Eastern Road
QUAKERS HILL NSW 2763

PHONE: 02 9208 7100

NON-COMPLETION OF A HIGHER SCHOOL CERTIFICATE COURSE OFFICIAL WARNING

Student's name:

Date:

Dear

I am writing to advise that your son / daughter is in danger of not meeting the course completion criteria for the Higher School Certificate course.

The Board of Studies requires schools to issue students with official warnings in order to give them the opportunity to redeem themselves. Please regard this letter as the first official warning we have issued concerning the above course/task. A minimum of two course specific warnings must be issued prior to a final 'N' determination being made for a course.

Course Completion Criteria

Where it is determined that a student has not met the Course Completion Criteria, they place themselves at risk of receiving an 'N' (non-completion of course) determination. An 'N' determination will mean that the course will not be listed on the student's Record of Achievement. In Year 12 students must make a genuine attempt at assessment tasks that contribute in excess of 50% of available marks. Completion of tasks worth exactly 50% is not sufficient; tasks worth in excess of 50% must be completed.

The satisfactory completion of a course requires principals to have sufficient evidence that the student has met the following criteria.

- a) Followed the course developed or endorsed by the Board.
- b) Applied themselves with diligence and sustained effort to the set tasks and experiences provided in the course by the school.
- c) Achieved some or all of the outcomes.

To date, your son / daughter has not satisfactorily met (a), (b) or (c) of the course completion criteria.

The following table lists those tasks, requirements or outcomes not yet completed or achieved, and/or for which a genuine attempt has not been made. In order for your son / daughter to satisfy the course completion criteria, the following tasks, requirements or outcomes need to be satisfactorily completed/achieved.

<i>Task name Course requirement Course outcome</i>	<i>Date task initially due (if applicable)</i>	<i>Action required by student</i>	<i>Date to be completed by (if applicable)</i>

Task Description:	This task is worth	% of the total course assessment.
1. Explain the importance of the research design in a quantitative study.	10%	10%
2. Discuss the ethical considerations in conducting research with human participants.	10%	10%
3. Analyze the data from a survey study using statistical software.	15%	15%
4. Evaluate the validity and reliability of a research instrument.	10%	10%
5. Write a research proposal for a quantitative study.	15%	15%
6. Critique a research article from a quantitative study.	10%	10%
7. Design a research study to investigate the effectiveness of a new teaching method.	15%	15%
8. Present a research paper on a quantitative study.	10%	10%
9. Apply the research findings to a real-world problem.	10%	10%
10. Reflect on the research process and the role of the researcher.	10%	10%

Please discuss this matter with your _____ and contact the school if further information or clarification is needed.

Class Teacher _____ Head Teacher _____ Deputy Principal _____

Please detach this section and return to the school

REQUIREMENTS FOR THE SATISFACTORY COMPLETION OF A HIGHER SCHOOL CERTIFICATE COURSE

Student's name: _____ Course: _____ Date: _____

I have received the letter indicating that my son / daughter is in danger of not having satisfactorily completed the course listed above.

I am aware that this course may not appear on his / her Record of Achievement.

I am also aware that the 'N' determination will make my son / daughter ineligible for the award of the Higher School Certificate.

Parent/Caregiver's signature _____ Date _____

Student's signature _____ Date _____



Student Appeal Form – Illness/Misadventure

Please submit to Course Head Teacher

Student First Name..... Student Family Name

NESA Number Connect Class Year 11 or Year 12 (please circle)

Course Teacher

Task

Task Issue Date / / Task / Exam Due Date / /

Type of Task

- ☐ Assessment Task ☐ Examination (during Exam period) ☐ Presentation/Performance
☐ Work Placement ☐ Other

This Appeal Form is to explain

- ☐ Illness – MUST be accompanied by a Medical Certificate
☐ Misadventure ☐ Other

Reason for Appeal

- ☐ Absent from Assessment Task, or absent when the Assessment Task was due because of illness or exceptional circumstance
☐ Special consideration due to illness, misadventure or exceptional circumstances leading up to an Assessment Task or on the day of the Assessment Task

Explanation in support of Appeal application (completed by student)
.....
.....

Attached Supporting Documentation

- ☐ Medical Certificate from Dr Dated / /
☐ Supporting Letter (e.g. from Parent/Carer etc.)
☐ Other (please specify)

Student Signature **Date** / /

Parent/Carer Signature **Date** / /

Recommendation of KLA Head Teacher
.....

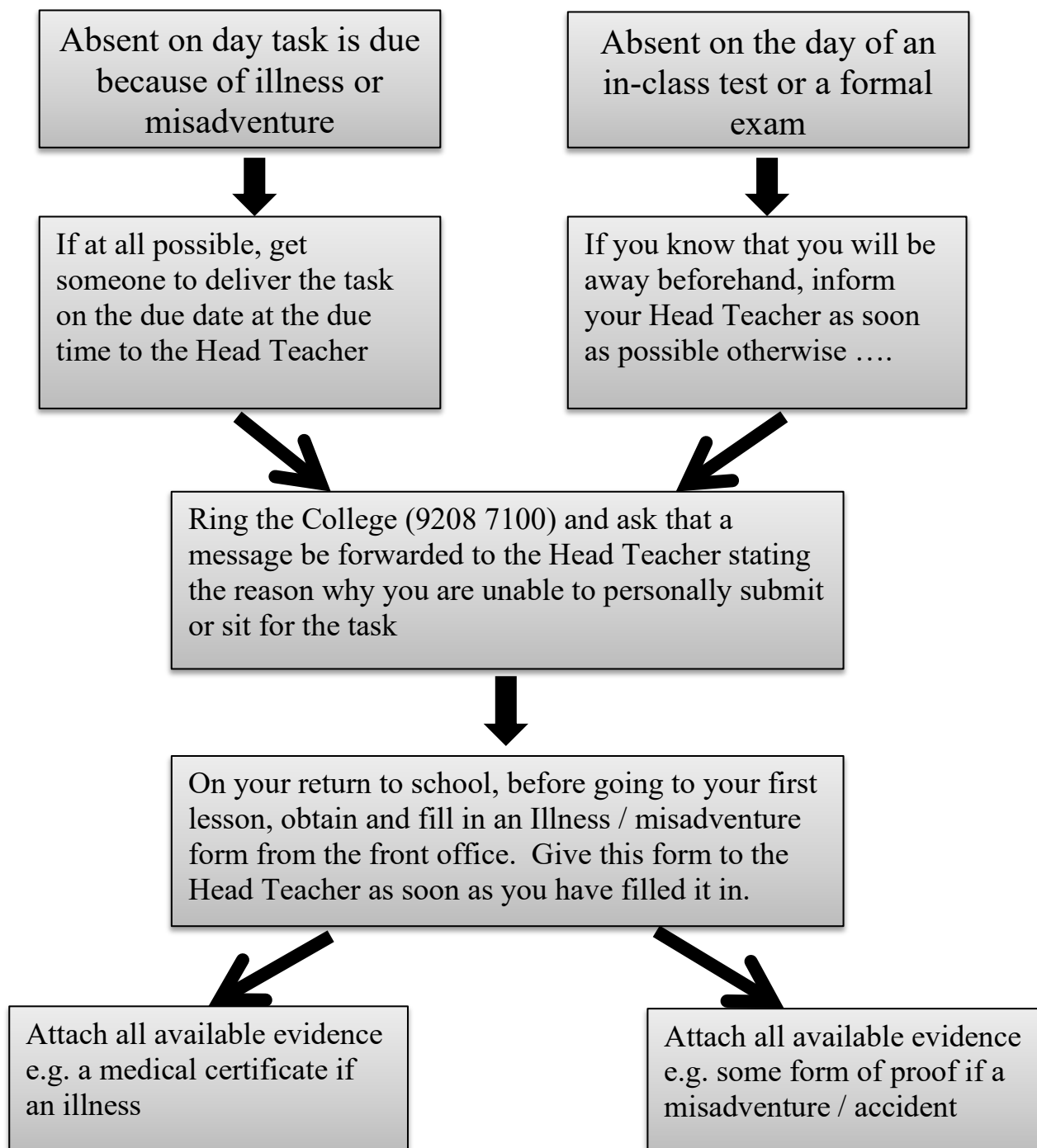
Head Teacher Signature **Date** / /

Upheld **Denied** (please circle)

Entered by - ☐ Head Teacher Teaching & Learning
 ☐ Class Teacher - in Sentral (Wellbeing/Data Record/Illness Misadventure Tracking)

Procedures to Follow if Assessment Tasks are Missed

Assessment procedures to follow when:





Policy and general guidelines for the use of Generative AI (GAI) in assessment including malpractice at Wyndham College.

VERSION HISTORY

10 August 2024	Drafting and consultation with working party begins
27 August 2024	Editing after working party consultation
19 September 2024	Published to Wyndham College Policy Folder in Sentral

KEY DOCUMENTS

The general advice for the use of Generative Artificial Intelligence (GAI) in schools is constantly changing and being rewritten as new developments in GAI are reached. Familiarisation and consultation with following documents are recommended:

- [Use of Artificial Intelligence by students \(NSW Govt and NESA, 21/8/24\)](#)
- [Guidelines regarding the use of generative AI \(NSW Government website - Education; 2 Feb 2024\)](#)
- [Enabling generative AI opportunities while managing risks](#)
- [Navigating legal considerations for generative AI use .](#)
- [Th Australian Framework for Generative Artificial Intelligence in Schools \(Australian Government Department of Education; 1 December 2023\)](#)
- [Generative AI: basic guidance \(NSW Government website\)](#)
- [Initial advice on student use of generative AI in assessment \(NSW Government website - Education; 23 July 2024\)](#)
- [Honesty in HSC Assessment – the Standard – NESA Assessment Certification Examination \(ACE\)](#)
- [NESA - malpractice](#)
- [Assessment Principles](#) and [NESA - Assessment in Stage 6](#)
- [NESA - All My Own Work](#)

RATIONALE and BACKGROUND

Academic integrity is the need to act with honesty, which is critical in learning and education.

- Honesty
- Fairness
- Respect
- Accuracy
- Responsibility.

The Australian Framework for Generative Artificial Intelligence (GAI) in Schools seeks to guide the **responsible and ethical use of generative AI tools** in ways that benefit students with the following principles:

1. **Teaching and Learning** -Generative AI tools are used to support and enhance teaching and learning
2. **Human and Social Wellbeing**- Generative AI tools are used to benefit all members of the school community.
3. **Transparency** -School communities understand how generative AI tools work, how they can be used, and when and how these tools are impacting them.
4. **Fairness** -Generative AI tools are used in ways that are accessible, fair, and respectful.
5. **Accountability** - Generative AI tools are used in ways that are open to challenge and retain human agency and accountability for decisions.
6. **Privacy, Security and Safety** - Students and others using generative AI tools have their privacy and data protected

NESA - TYPES OF MALPRACTICE IN HSC SUBMITTED WORKS AND PRACTICAL COMPONENTS, HSC EXAMS, AND HSC MINIMUM STANDARD TESTS

Malpractice is any attempt to gain an unfair advantage over other students.

Malpractice in any form including plagiarism, **collusion**, misrepresentation, and breach of assessment conditions is unacceptable.

NESA treats allegations of malpractice very seriously and detected malpractice will jeopardise a student's award and achievement of the RoSA or the HSC.

Misrepresentation

1. Misrepresentation is when a student misleads or deceives others by presenting untrue information through the fabrication, alteration, or omission of information.

Plagiarism

1. Plagiarism is when a student pretends to have written, created or developed work that has originated from another source.
2. When using work that has originated from another source, students must acknowledge the source material in accordance with course specific requirements.

Collusion

1. Collusion is when a student **inappropriately collaborates** with another student, group of students, person, organisation, or **entity to produce work** that was meant for individual assessment.

From: <https://curriculum.nsw.edu.au/ace-rules/ace10/malpractice> (accessed 10/8/24)

Note: Students are advised to refer directly to the link above which outlines NESA advice regarding malpractice and the ACE manual: '[Honesty in HSC assessment: What constitutes malpractice.](#)'

ADVICE ON STUDENT USE OF GENERATIVE AI IN ASSESSMENT

At August 2024, the department currently restricts student access to generative AI tools at school (Initial advice on student use of generative AI in assessment).

Academic integrity

- Assessment task notifications will explicitly state whether approved generative AI tools can be used by students at home in completing the task

- The school will address suspected breaches of academic integrity involving Generative AI by asking students to supply evidence that the work meets the principles of **All My Own Work** and the standards required in the task notification.

Disclosure

- Class teachers will advise students how to cite and disclose use of Generative AI in course and assessment work.

Ethical use

- **Assessment tasks cannot require that students use generative AI**, as this would conflict with the department's value of equity. For example, student access to high quality generative AI tools (through paid subscriptions), or digital skills/support to effectively use generative AI can vary and creates an unfair playing field.
- If students use Generative AI tools, they should validate the **quality and integrity of the information provided**.

GENERATIVE AI USAGE GUIDELINES - LEVELS OF AI USE

To be used in conjunction with specified requirements of the Assessment Task

Level 0: No AI Use Permitted

AI tools are prohibited. Students must complete all work independently.

Level 1: Limited AI Use for Research

Students may use AI tools for research purposes only, such as generating ideas, outlines, or gathering information. All AI-generated prompts/content must be evidenced and/or cited appropriately.

Level 2: AI-Assisted Drafting/Editing

AI tools can be used to assist in drafting/editing content. Students must clearly indicate which parts of their work involved AI assistance and must include a reflection on their learning and understanding of the topic. Original draft with no AI must be submitted.

Level 3: AI-Generated Content with student evaluation

Use of NSW Department of Education sanctioned Generative AI tools to generate content. The final submission must clearly demonstrate the students clear original understanding, interpretation, and/or critical analysis with reference to the AI content.

MALPRACTICE POLICY:

CONSEQUENCES OF INAPPROPRIATE USE OF GAI IN ASSESSMENT

The work submitted by a student in an assessment task will be verified for accuracy following the principles of **All My Own Work. Students**. Students may be required to provide further evidence that their submitted work complies with AI permitted in the task and the principles of **All My Own Work**.

Students who do not provide evidence required by the task for their work to be verified as **All My Own Work** at the time/date a task is submitted and as stated in the assessment notification, will face a penalty.

In the first instance, students will be required to provide requested evidence to the faculty head teacher. If suitable evidence is not provided to meet the task and **All My Own Work**, **zero marks for all or part of the task**, will be awarded depending on the nature of the task.

A student can appeal this mark to the Assessment Review Panel which will be convened if the matter can't be resolved at the Head Teacher level.

The composition of this panel will include members of the school executive, not from the faculty in which the case has arisen. The panel will review each malpractice case on its merits, considering all the issues, to arrive at a fair conclusion and make recommendations to the principal.

Evidence required by the task must be provided for clear and accurate verification that the work presented complies with the task, **All My Own Work** and is the original work of the student.

Sample Assessment cover page.



Wyndham College
Year **[YEAR, SUBJECT]** Course
Senior Assessment Task Notification

Task name:	Task no:
Unit:	Marks:
Task type:	Weighting:
Location:	Duration:
Equipment needed:	Due date:
All My Own Work – Use of any Generative Artificial Intelligence (GAI) permitted for this task: X	
Level 0: No AI Use Permitted. AI tools are prohibited. Students must complete all work independently.	L0
Level 1: Limited AI Use for Research. Students may use AI tools for research purposes only, such as generating ideas, outlines, or gathering information. All AI-generated prompts/content must be evidenced and/or cited appropriately.	L1
Level 2: AI-Assisted Drafting/Editing. AI tools can be used to assist in drafting/editing content. Students must clearly indicate which parts of their work involved AI assistance & must include a reflection on their learning & understanding of the topic.	L2
Level 3: AI-Generated Content with student evaluation. Use of Generative AI tools for generating content. The final submission must clearly demonstrate the students clear original understanding, interpretation, and/or critical analysis with reference to AI content.	L3
Outcomes:	
<ul style="list-style-type: none"> • • • 	

Task Description: (Showing mark breakdown if applicable)

Yearly Planner- HSC Assessment weeks per subject.

[illegible]

HSC Assessment Schedules 2024-5

Ancient History

	TASK 1	TASK 2	TASK 3	TASK 4	
Name of task	Cities of Vesuvius: Pompeii & Herculaneum	Spartan Society: to the Battle of Leuctra 371 BC	Personality: Hatshepsut	<i>Trial HSC</i>	
Type of task	Source Analysis and Written Response	HSC Style Written Responses	Historical Analysis: A written interview with Hatshepsut	Exam	
Date of task	Term 4 Week 8	Term 1 Week 8	Term 2 Week 8	Term 3 Week 2 & 3	
Outcomes assessed	AH12-6, AH12-7, AH12-8, AH12-9, AH12-10	AH12-1, AH12-2, AH12-3, AH12-5, AH12-9	AH12-3, AH12-4, AH12-6, AH12-7, AH12-8, AH12-9	All outcomes	
Component					Weighting
Knowledge and understanding of the course content	5	10	5	20	40
Historical skills in the analysis and evaluation of sources and interpretations	5		10	5	20
Historical inquiry and research	5	5	10		20
Communication of historical understanding in appropriate forms	5	5	5	5	20
Total %	20	20	30	30	100

Course Calendar (120 Indicative Hours)

Week	Term 4	Term 1	Term 2	Term 3
1	Cities of Vesuvius Survey	Spartan Society	Hatshepsut	New Kingdom Egypt
2	Cities of Vesuvius	Spartan Society	Hatshepsut	Trial HSC Exams Task 4 30%
3	Cities of Vesuvius	Spartan Society	Hatshepsut	
4	Cities of Vesuvius	Spartan Society	New Kingdom Egypt	
5	Cities of Vesuvius	Spartan Society	New Kingdom Egypt	Cities of Vesuvius
6	Cities of Vesuvius	Spartan Society	New Kingdom Egypt	Cities of Vesuvius
7	Cities of Vesuvius	Spartan Society	New Kingdom Egypt	Revision – New Kingdom Egypt
8	Task 1 – 20%	Year 12 FOCUS WEEK Task 2 – 20%	Task 3 – 30%	Revision – New Kingdom Egypt/ Hatshepsut
9	Cities of Vesuvius	Hatshepsut	New Kingdom Egypt	Revision – Hatshepsut
10	Cities of Vesuvius	Hatshepsut	New Kingdom Egypt	Revision - Sparta
11		Hatshepsut		

Biology

	TASK 1	TASK 2	TASK 3	TASK 4	
Name of task	<i>Depth Study</i>	<i>Module Review</i>	<i>Secondary Research</i>	<i>Trial HSC</i>	
Type of task	Practical/Field/Research	Written Quiz	Secondary Research/In Class Task	Exam	
Date of task	Term 4 Week 10	Term 1 Week 8	Term 2 Week 8	Term 3 Week 2 & 3	
Outcomes assessed	BIO11/12-1 BIO11/12-2 BIO11/12-3 BIO11/12-5 BIO11/12-7 BIO12-14	BIO11/12-4 BIO11/12-5 BIO11/12-6 BIO12-12 BIO12-14	BIO11/12-4 BIO11/12-7 BIO11/12-5 BIO11/12-6 BIO12-12 BIO12-13	BIO11/12-5 BIO11/12-6 BIO 12-12 BIO 12-13 BIO 12-14 BIO 12-15	
Component					Weighting
Skills in Working Scientifically	25	10	15	10	60
Knowledge and understanding	5	10	5	20	40
Total %	30	20	20	30	100

Course Calendar (120 Indicative Hours)

Week	Term 4	Term 1	Term 2	Term 3
1	<i>Introduction to HSC</i>	Module 5 Heredity	Module 6-Genetic Change	Trial Revision
2	Module 7 Infectious Diseases	Module 5 Heredity	Module 6-Genetic Change	Trial HSC Exams Task 4 30%
3	Module 7 Infectious Diseases	Module 5 Heredity	Module 6-Genetic Change	
4	Module 7 Infectious Diseases	Module 5 Heredity	Module 6-Genetic Change	
5	Module 7 Infectious Diseases	Module 5 Heredity	Module 6-Genetic Change	Module 8 Non-infectious Diseases
6	Module 7 Infectious Diseases	Module 5 Heredity	Task 3 – 20%	Module 8 Non-infectious Diseases
7	Module 7 Infectious Diseases	Module 5 Heredity	Module 8 Non-infectious Diseases	HSC Revision
8	Module 7 Infectious Diseases	Year 12 FOCUS WEEK Task 2 – 20%	Module 8 Non-infectious Diseases	HSC Revision
9	Module 7 Infectious Diseases	Module 5 Heredity	Module 8 Non-infectious Diseases	HSC Revision
10	Task 1 – 30% Module 5 Heredity	Module 5 Heredity	Module 8 Non-infectious Diseases	HSC Revision
11		Module 6-Genetic Change		

Business Studies

	TASK 1	TASK 2	TASK 3	TASK 4	
Name of task	<i>Operations contemporary business issues and case study research</i>	<i>Marketing: Business report</i>	<i>Finance</i>	<i>Trial HSC</i>	
Type of task	Extended written response	Written response	Topic test: Multiple choice and short answer	Exam	
Date of task	Term 4 Week 9	Term 1 Week 8	Term 2 Week 7	Term 3 Weeks 2-3	
Outcomes assessed	H5, H6, H7	H9, H10	H2, H6, H8	H1, H3, H4, H9	
Component					Weighting
Knowledge & understanding of course content	10	10	5	15	40
Stimulus-based skills		10		10	20
Inquiry and research	10		10		20
Communication of business information, ideas and issues in appropriate forms	5	5	5	5	20
Total %	25	25	20	30	100

Course Calendar (120 Indicative Hours)

Week	Term 4	Term 1	Term 2	Term 3
1	<i>Introduction to HSC</i>	Marketing	Finance	Human Resources
2	Operations	Marketing	Finance	Trial HSC Exams Task 4 30%
3	Operations	Marketing	Finance	
4	Operations	Marketing	Finance	Human Resources
5	Operations	Marketing	Finance	Human Resources
6	Operations	Marketing	Finance	Human Resources
7	Operations	Marketing	Task 3 - 20% Finance	Human Resources
8	Operations	Year 12 FOCUS WEEK Task 2 25%	Human Resources	Human Resources
9	Task 1 25%	Finance	Human Resources	Human Resources
10	Marketing	Finance	Human Resources	Revision
11		Finance		

Chemistry

	TASK 1	TASK 2	TASK 3	TASK 4	
Name of task	<i>Depth Study</i>	<i>Scientific Skills</i>	<i>Secondary Research</i>	<i>Trial HSC</i>	
Type of task	Research/ Practical	Practical/ Written quiz Quiz	Research/ In-Class Task	Exam	
Date of task	Term 4 Week 9	Term1 Week 8	Term 2 Week 9	Term 3 Week 2 & 3	
Outcomes assessed	CH11/12-2 CH11/12-3 CH12-5	CH11/12-1 CH11/12-3 CH11/12-4 CH11/12-7 CH11/12-6 CH12-13	CH11/12-5 CH11/12-6 CH11/12-7 CH11/12-14	CH11/12-5 CH11/12-6 CH12-12 CH12-13 CH12-14 CH12-15	
Component	CH11/12-5 CH12-6 CH11/12-6 CH11/2-7 CH11/12-12				Weighting
Skills in Working Scientifically	15	20	15	10	60
Knowledge and Understanding	5	10	5	20	40
Total %	20	30	20	30	100

Course Calendar (120 Indicative Hours)

Week	Term 4	Term 1	Term 2	Term 3
1	<i>Introduction to HSC</i>	Module 6 Acid/Base Reaction	Module 7 Organic Chemistry	Module 8 Applying Chemical Ideas
2	Module 5 Equilibrium and Acid Reaction	Module 6 Acid/Base Reaction	Module 7 Organic Chemistry	Trial HSC Exams Task 4 30%
3	Module 5 Equilibrium and Acid Reaction	Module 6 Acid/Base Reaction	Module 7 Organic Chemistry	
4	Module 5 Equilibrium and Acid Reaction	Module 6 Acid/Base Reaction	Module 7 Organic Chemistry	
5	Module 5 Equilibrium and Acid Reaction	Module 6 Acid/Base Reaction	Module 7 Organic Chemistry	Module 8 Applying Chemical Ideas
6	Module 5 Equilibrium and Acid Reaction	Module 6 Acid/Base Reaction	Module 7 Organic Chemistry	Module 8 Applying Chemical Ideas
7	Module 5 Equilibrium and Acid Reaction	Module 6 Acid/Base Reaction	Module 7 Organic Chemistry	Module 8 Applying Chemical Ideas
8	Module 5 Equilibrium and Acid Reaction	Year 12 FOCUS WEEK Task 2 30%	Module 7 Organic Chemistry	HSC Revision
9	Task 1 – 20%	Module 7 Organic Chemistry	Task 3 – 20%	HSC Revision
10	Module 6 Acid/Base Reaction	Module 7 Organic Chemistry	Module 8 Applying Chemical Ideas	HSC Revision
11		Module 7 Organic Chemistry		

Community and Family Studies

	TASK 1	TASK 2	TASK 3	TASK 4	
Name of task	<i>Parent and Caring</i>	<i>Independent Research Project</i>	<i>Groups in Context</i>	<i>Trial HSC</i>	
Type of task	Case Study	Research	Investigation	Exam	
Date of task	Term 4 Week 9	Term 1 Week 10	Term 2 Week 8	Term 3 Weeks 2-3	
Outcomes assessed	H1.2, H2.1, H2.3, H3.2, H5.2	H4.1, H4.2	H2.2, H3.3, H6.2	H1.1 to H6.1	
Component					Weighting
Knowledge and understanding of course content	15	5	10	15	40
Skills in critical thinking, research methodology, analysing and communicating	15	15	10	15	60
Total %	30	20	30	30	100

Course Calendar (120 Indicative Hours)

Week	Term 4	Term 1	Term 2	Term 3
1	<i>Introduction to HSC</i>	Groups in Context	Parenting and Caring	Social Impact of Technology
2	Research Methodology	Groups in Context	Parenting and Caring	Trial HSC Exams Task 4 30%
3	Research Methodology	Groups in Context	Parenting and Caring	
4	Research Methodology	Groups in Context	Parenting and Caring	
5	Research Methodology	Groups in Context	Parenting and Caring	Social Impact of Technology
6	Research Methodology	Groups in Context	Parenting and Caring	Social Impact of Technology
7	Research Methodology	Groups in Context	Parenting and Caring	Social Impact of Technology
8	Research Methodology	Year 12 FOCUS WEEK	Task 3 - 30%	Social Impact of Technology
9	Research Methodology	Groups in Context	Social Impact of Technology	Social Impact of Technology
10	Task 1 - 20%	Task 2 - 20%	Social Impact of Technology	Revision
11		Groups in Context		

Dance

	TASK 1	TASK 2	TASK 3	TASK 4	
Name of task	Core Appreciation + Core Performance	Core Composition	Major Study	Trial HSC	
Type of task	Written Task on Terrain (by Frances Rings) Core Performance Dance Interview Journal	Performance of Composition, Journal, Interview/ elaboration	Progress submission of 1. Major Study in Dance/ Film/ Composition 2. Written component and Journal 3. Discussion	Exam	
Date of task	Term 4 Week 10	Term 1 Week 10	Term 2 Week 9	Term 3 (Written) Weeks 2-3 (Practical) Weeks 1-2	
Outcomes assessed	H4.1, H4.2, H4.3, H4.4, H4.5	H2.1,2.2,2.3,2.4 or H3.1, 3.2, 3.3, 3.4 or H4.1, 4.2, 4.3, 4.4	H2.1, 2.2, 2.3, H3.1, 3.2, 3.3	H2.1, 2.2, 2.3, H3.1, 3.2, 3.3, 3.4, H4.1, 4.2, 4.3, 4.4, 4.5	
Component					Weighting
Performance	10			10	20
Composition		15		5	20
Appreciation	15			5	20
Major Study			30	10	40
Total %	25	15	30	30	100

Course Calendar (120 Indicative Hours)

Week	Term 4	Term 1	Term 2	Term 3
1	<i>Introduction to HSC</i>	Core Composition	Major Study	MajorStudy/Composition/ Performance
2	Core Performance & Core Appreciation	Core Composition	Major Study	Trial HSC Exams Task 4 30%
3	Core Performance & Core Appreciation	Core Composition	Major Study	
4	Core Performance & Core Appreciation	Core Composition	Major Study	
5	Core Performance & Core Appreciation	Core Composition	Major Study	Appreciation
6	Core Performance & Core Appreciation	Core Composition	Major Study	Appreciation
7	Core Performance & Core Appreciation	Core Composition	Major Study	Appreciation
8	Core Performance & Core Appreciation	Year 12 FOCUS WEEK	Major Study	Appreciation
9	Core Performance & Core Appreciation	Major Study, Composition	Task 3 Major Study - 30%	Appreciation
10	Task 1 Core Performance & Appreciation 25%	Task 2 - 15% Composition	Major Study	Appreciation
11		Major Study		

Design and Technology

	TASK 1	TASK 2	TASK 3	TASK 4	
Name of task	<i>Project Proposal Presentation</i>	<i>Innovation Case study</i>	<i>Final Project Presentation</i>	<i>Trial HSC</i>	
Type of task	Written	Report	Practical & Written	Exam	
Date of task	Term 4 Week 9	Term 1 Week 7	Term 3 Week 1	Term 3 Weeks 2-3	
Outcomes assessed	H4.1,H4.2 H4.3	H2.2, H3.1, H6.2	H1.2,H3.2, H5.1, H5.2, H6.1	H1.1, H2.1	
Component					Weighting
Knowledge and skills in: Innovation and Emerging technologies		20		20	40
Designing and Producing	20		30	10	60
Total %	20	20	30	30	100

Course Calendar (120 Indicative Hours)

Week	Term 4	Term 1	Term 2	Term 3
1	<i>Introduction to HSC</i>	Innovation and Emerging Technologies	Project development and realisation	Task 3 - 30%
2	Designing and Producing: Project proposal and project management	Project development and realisation	Project development and realisation	Trial HSC Exams Task 4 30%
3	Project proposal and project management	Project development and realisation	Project development and realisation	
4	Project proposal and project management	Project development and realisation	Project development and realisation	
5	Project proposal and project management	Project development and realisation	Project development and realisation	Innovation and Emerging Technologies
6	Project proposal and project management	Project development and realisation	Project development and realisation	Innovation and Emerging Technologies
7	Task 1 - 20%	Task 2 - 20%	Project evaluation	Revision
8	Project proposal and project management	Year 12 FOCUS WEEK	Project evaluation	Revision
9	Innovation and Emerging Technologies	Project development and realisation	Project evaluation	Revision
10	Innovation and Emerging Technologies	Project development and realisation	Project evaluation	Revision
11		Project development and realisation		

Drama

	TASK 1	TASK 2	TASK 3	TASK 4	
Name of task	<i>Australian Drama and Theatre</i>	<i>Individual Project Progress Presentation & Studies in Drama and Theatre</i>	<i>Group Performance & IP Performance Presentation</i>	<i>Trial HSC</i>	
Type of task	Scripted Performance & Essay on Topic Area of Study	IP Progress Presentation & Directed Scenes with Rationale on Topic Area of Study	Progress Presentation of Group Performance & Individual Project/ Performance + Logbooks	Written Exam	
Date of task	Term 4 Week 9	Term 1 Week 8	Term 2 Week 9	Term 3 Weeks 2-3	
Outcomes assessed	H1.1, H1.2, H1.7, H2.3, H3.2, H3.3	*H1.3, H1.6, H2.3	H1.3, H1.4, H1.5, H1.6 H2.1, H2.2	H3.1, H3.2, H3.3	
Component					Weighting
Making		20	20		40
Performing	10	10	10		30
Critically Studying	10			20	30
Total %	20	30	30	20	100

*Appropriate outcomes selected based on individual project

Course Calendar (120 Indicative Hours)

Week	Term 4	Term 1	Term 2	Term 3
1	<i>Introduction to HSC</i>	Significant Plays/IPs	Group Performances/IPs	GPs/IPs/Revision
2	Australian Drama/IPs	Significant Plays/IPs	Group Performances/IPs	Trial HSC Exams Task 4 20%
3	Australian Drama/IPs	Significant Plays	Group Performances/IPs	
4	Australian Drama/IPs	Significant Plays	Group Performances/IPs	Group Performances/IPs
5	Australian Drama/IPs	Significant Plays	Group Performances/IPs	Group Performances/IPs
6	Australian Drama/IPs	Significant Plays	Group Performances/IPs	HSC Performances
7	Australian Drama/IPs	Significant Plays	Group Performances/IPs	HSC Performances
8	Australian Drama/IPs	Year 12 FOCUS WEEK Task 2 30%	Group Performances/IPs	Revision
9	Task 1 20%	Significant Plays	Task 3 30%	Revision
10	Significant Plays	Significant Plays/IPs	Group Performances/IPs	Revision
11		Significant Plays/IPs		

Economics

	TASK 1	TASK 2	TASK 3	TASK 4	
Name of task	<i>Global Economy</i>	<i>Australia's place in the Global Economy</i>	<i>Economic Issues</i>	<i>Trial HSC</i>	
Type of task	Case Study	Topic Test	Research Essay	Exam	
Date of task	Term 4 Week 9	Term 1 Week 8	Term 2 Week 8	Term 3 Weeks 2-3	
Outcomes assessed	H4, H6, H10, H12	H1, H3, H11	H5, H9, H7	H1, H2, H4, H8, H10	
Component					Weighting
Knowledge & understanding of course content	5	15	10	10	40
Stimulus-based skills		5		15	20
Inquiry and research	10		10		20
Communication of economic information, ideas and issues in appropriate forms	5	5	5	5	20
Total %	20	25	25	30	100

Course Calendar (120 Indicative Hours)

Week	Term 4	Term 1	Term 2	Term 3
1	<i>Introduction to HSC</i>	Australia's Place in the Global Economy	Economic Issues	Economic Policies and Management
2	The Global Economy	Australia's Place in the Global Economy	Economic Issues	Trial HSC Exams Task 4 40%
3	The Global Economy	Australia's Place in the Global Economy	Economic Issues	
4	The Global Economy	Australia's Place in the Global Economy	Economic Issues	Economic Policies
5	The Global Economy	Australia's Place in the Global Economy	Economic Issues	Economic Policies
6	The Global Economy	Australia's Place in the Global Economy	Economic Issues	Economic Policies
7	The Global Economy	Australia's Place in the Global Economy	Economic Policies	Economic Policies
8	The Global Economy	Year 12 FOCUS WEEK Task 2 - 20%	Task 3 - 20%	Economic Policies
9	Task 1 - 20%	Australia's Place in the Global Economy	Economic Issues	Economic Policies
10	Australia's Place in the Global Economy	Australia's Place in the Global Economy	Economic Policies and Management	Economic Policies
11		Australia's Place in the Global Economy		

Engineering Studies

	TASK 1	TASK 2	TASK 3	TASK 4	
Name of task	<i>Civil Engineering</i>	<i>Personal & Public Transport</i>	<i>Telecommunications</i>	<i>Trial HSC</i>	
Type of task	Problem solving task	Engineering Report	Research Task	Exam	
Date of task	Term 4 Week 8	Term 1 Week 8	Term 2 Week 6	Term 3 Weeks 2-3	
Outcomes assessed	H3.1, H3.2, H4.2, H5.1, H5.2	H3.3, H4.3, H6.1, H6.2	H1.1, H2.1, H2.2, H4.1	H1.2, H2.1, H3.1, H3.3, H4.2, H6.1	
Component					Weighting
Knowledge and understanding of course content	10	15	15	20	60
Knowledge and skills in research, problem solving and communication related to engineering practice	15	10	5	10	40
Total %	25	25	20	30	100

Course Calendar (120 Indicative Hours)

Week	Term 4	Term 1	Term 2	Term 3
1	<i>Introduction to HSC</i>	Personal and Public Transport	Telecommunications	Aeronautical Engineering
2	Civil Structures	Personal and Public Transport	Telecommunications	Trial HSC Exams Task 4 30%
3	Civil Structures	Personal and Public Transport	Telecommunications	
4	Civil Structures	Personal and Public Transport	Telecommunications	Aeronautical Engineering
5	Civil Structures	Personal and Public Transport	Telecommunications	Aeronautical Engineering
6	Civil Structures	Personal and Public Transport	Task 3 - 20%	Aeronautical Engineering
7	Civil Structures	Telecommunications	Aeronautical Engineering	Revision
8	Task 1 - 25%	Year 12 FOCUS WEEK Task 2 - 25%	Aeronautical Engineering	Revision
9	Civil Structures	Telecommunications	Aeronautical Engineering	Revision
10	Civil Structures	Telecommunications	Aeronautical Engineering	Revision
11		Civil Structures		

English – Advanced

	TASK 1	TASK 2	TASK 3	TASK 4	
Name of task	Common Module – Texts and Human Experiences (15%) Module C: The Craft of Writing (5%)	Module B: Critical Study of Literature (20%) Module C: The Craft of Writing (5%)	Module A: Textual Conversations (20%) Module C: The Craft of Writing (5%)	Trial HSC Paper 1: Texts & Human Experiences (10%) Paper 2: Modules (20%) Mod C worth 10% Mod A & B 5%each	
Type of task	Writing Piece & Preparation Notes	Writing Piece & Multimodal Piece	Writing Piece	Exam	
Date of task	Term 4 Week 9	Term 1 Week 8	Term 2 Week 8	Term 3 Weeks 2-3	
Outcomes assessed	EA12-1, EA12-6, EA12-4, EA12-8	EA12-2, EA12-3, EA12-5, EA12-9	EN12-1, EA12-3, EA12-7, EA12-8,	EA12-1, EA12-6, EA12-3, EA12-4, EA12-5, EA12-7, EA12-8, EA12-9	
Component					Weighting
Knowledge and understanding of course content	10	10	15	15	50
Skills in responding to texts and communication of ideas appropriate to audience, purpose and context across all modes	10	15	10	15	50
Total %	20	25	25	30	100

Course Calendar (120 Indicative Hours)

Week	Term 4	Term 1	Term 2	Term 3
1	Common Module/ Mod C	Module B/ Module C	Module A/ Module C	Revision
2	Common Module/ Mod C	Module B/ Module C	Module A/ Module C	Trial HSC Exams Task 4 30%
3	Common Module/ Mod C	Module B/ Module C	Module A/ Module C	
4	Common Module/ Mod C	Module B/ Module C	Module A/ Module C	Module C
5	Common Module/ Mod C	Module B/ Module C	Module A/ Module C	Module C
6	Common Module/ Mod C	Module B/ Module C	Module A/ Module C	Module B
7	Common Module/ Mod C	Module B/ Module C	Module A/ Module C	Module B
8	Common Module/ Mod C	Year 12 FOCUS WEEK Task 2-25%	Task 3 - 35%	Common Module
9	Task 1 – 20%	Module C	Revision	Common Module
10	Module B	Module A	Revision	Module A
11		Module A		

*Note that Module C is to be taught Concurrently with other modules to embed and strengthen writing skills across all modules in Year 12.

English - Standard

	TASK 1	TASK 2	TASK 3	TASK 4	
Name of task	Common Module – Texts and Human Experiences (15%) Module C: The Craft of Writing (5%)	Module B: Close Study of Literature (20%) Module C: The Craft of Writing (5%)	Module A: Language, Identity and Culture (20%) Module C: The Craft of Writing (5%)	Trial HSC Paper 1: Texts & Human Experiences (10%) Paper 2: Modules (20%) Mod C worth 10% Mod A & B 5%each	
Type of task	Writing Piece & Preparation Notes	Writing Piece & Multimodal Piece	Writing Pieces	Exam	
Date of task	Term 4 Week 9	Term 1 Week 8	Term 2 Week 8	Term 3 Weeks 2-3	
Outcomes assessed	EN12-1, EN12-4, EN12-6, EN12-8	EN12-1, EN12-2, EN12-5, EN12-9	EN12-1, EN12-3, EN12-7, EN12-8	EN12-1, EN12-3, EN12-4, EN12-5, EN12-6, EN12-7, EN12-8, EN12-9	
Component					Weighting
Knowledge and understanding of course content	10	10	15	15	50
Skills in responding to texts and communication of ideas appropriate to audience, purpose and context across all modes	10	15	10	15	50
Total %	20	25	25	30	100

Course Calendar (120 Indicative Hours)

Week	Term 4	Term 1	Term 2	Term 3
1	Module C	Module B / Module C	Module A/ Module C	Revision
2	Common Module/ Module C	Module B / Module C	Module A/ Module C	Trial HSC Exams Task 4 30%
3	Common Module/ Module C	Module B / Module C	Module A/ Module C	
4	Common Module/ Module C	Module B / Module C	Module A/ Module C	Module C
5	Common Module/ Module C	Module B / Module C	Module A/ Module C	Module C
6	Common Module/ Module C	Module B / Module C	Module A/ Module C	Module B
7	Common Module/ Module C	Module B / Module C	Module A/ Module C	Module B
8	Common Module/ Module C	Year 12 FOCUS WEEK Task 2 – 25%	Task 3 - 25%	Common Module
9	Task 1-20%	Module C	Revision	Common Module
10	Module B	Module A	Revision	Module A
11		Module A		

*Note that Module C is to be taught Concurrently with other modules to embed and strengthen writing skills across all modules in Year 12

English as an Additional Language or Dialect

	TASK 1	TASK 2	TASK 3	TASK 4	
Name of task	Module A: Texts and Human Experiences	Module B: Language, Identity and Culture	Module D: Focus on Writing	Trial HSC Modules A, B, C & D	
Type of task	Reading and Writing Task	Speaking and Listening Task (multimodal Presentation)	Writing Task	Exam	
Date of task	Term 4 Week 8	Term 1 Week 8	Term 2 Week 7	Term 3 Weeks 2-3	
Outcomes assessed	EAL12-1A, EAL12-3, EAL12- 4, EAL12-6	EALD12-3, EAL12-5, EAL12- 9,	EAL12-1A, EAL12-6 EAL12-7, EAL12-4	EAL12-1A, EAL12-3, EAL12-4 EAL12- 5, EAL12-8	
Component					Weighting
Knowledge and understanding of course content	10	10	10	20	50
Skills in responding to texts and communication of ideas appropriate to audience, purpose and context across all modes	10	15	15	10	50
Total %	20	25	25	30	100

Course Calendar (120 Indicative Hours)

Week	Term 4	Term 1	Term 2	Term 3
1	Introduction to HSC	Module D: Focus on Writing	Module B: Language, Identity & Culture	Revision
2	Module A: Texts & Human Experiences	Module D: Close Study of Text	Module B: Language, Identity & Culture	Trial HSC Exams Task 4 30%
3	Module A: Texts & Human Experiences	Module D: Close Study of Text	Module B: Language, Identity & Culture	
4	Module A: Texts & Human Experiences	Module D: Close Study of Text	Module B: Language, Identity & Culture	Module A: Texts & Human Experiences
5	Module A: Texts & Human Experiences	Module D: Close Study of Text	Module B: Language, Identity & Culture	Module A: Texts & Human Experiences
6	Module A: Texts & Human Experiences	Module D: Close Study of Text	Module B: Language, Identity & Culture	Module B: Language, Identity & Culture
7	Module A: Texts & Human Experiences	Module D: Close Study of Text	Module B: Language, Identity & Culture	Module B: Language, Identity & Culture
8	Task 1 - 20%	Year 12 FOCUS WEEK Task 2 - 30%	Task 3 - 20%	Module C: Close Study of Text
9	Module A: Texts & Human Experiences	Module D: Close Study of Text	Module B: Language, Identity & Culture	Module C: Close Study of Text
10	Module A: Texts & Human Experiences	Module D: Close Study of Text	Revision	Revision
11		Module B: Language, Identity & Culture		

English Extension 1

	TASK 1	TASK 2	TASK 3	
Name of task	<i>In Class Essay – Critical Response</i>	<i>Tutorial Presentation (Multimodal)</i>	<i>Trial HSC</i>	
Type of task	Reading & Writing	Speaking, Listening, Representing	Exam	
Date of task	Term 1 Week 5	Term 2 Week 6	Term 3 Weeks 2-3	
Outcomes assessed	EE12-1 EE12-2 EE12-3	EE12-1 EE12-2 EE12-4	EE12-1 EE12-2 EE12-3 EE12-4	
Component				Weighting
Knowledge and understanding of complex texts and of how and why they are valued.	10	20	20	50
Skills in : - Complex Analysis - Sustained Composition - Independent Investigation	20	20	10	50
Total %	30	40	30	100

Course Calendar (60 Indicative Hours)

Week	Term 4	Term 1	Term 2	Term 3
1	<i>Introduction to HSC</i>	Elective	Elective	Elective
2	Literary Worlds Common Module	Elective	Elective	Trial HSC Exams Task 3 30%
3	Literary Worlds Common Module	Elective	Elective	
4	Literary Worlds Common Module	Elective	Elective	
5	Literary Worlds Common Module	Task 1 - 30%	Elective	Elective
6	Literary Worlds Common Module	Elective	Task 2 - 40%	Elective
7	Literary Worlds Common Module	Elective	Elective	Elective
8	Literary Worlds Common Module	Year 12 FOCUS WEEK	Elective	Literary Worlds Common Module
9	Literary Worlds Common Module	Elective	Elective	Literary Worlds Common Module
10	Literary Worlds Common Module	Elective	Elective	Literary Worlds Common Module
11		Elective		

English Extension 2

	TASK 1	TASK 2	TASK 3	
Name of task	<i>Vive Voce</i>	<i>Literature Review</i>	<i>Critique of the Creative Process</i>	
Type of task	Interview (20 minutes)	Written submission 1200 words	Written submission 1000 words	
Date of task	Term 1 Week 10	Term 2 Week 10	Term 3 Week 1	
Outcomes assessed	EEX12-1, EEX12-4, EEX12-5	EEX12-1, EEX12-2, EEX12-3, EEX12-4	EEX12-2, EEX12-3, EEX12-5	
Component				Weighting
Skills in extensive independent research	15	20	15	50
Skills in sustained composition	15	20	15	50
Total %	30	40	30	100

Course Calendar (60 Indicative Hours)

Week	Term 4	Term 1	Term 2	Term 3
1	<i>Introduction to HSC</i>	Research	Composition	Task 3 - 30%
2	Course Requirements & the forms	Research	Composition	Trial HSC Exams
3	Exploring Form/s	Research	Composition	
4	Exploring Form/s	Research	Composition	Composition
5	Developing proposal	Research	Composition	Major Work Submission
6	Developing proposal	Research	Composition	
7	Developing proposal	Research	Composition	
8	Developing proposal	Year 12 FOCUS WEEK	Composition	
9	Developing proposal	Research	Composition	
10	Task 1 - 30%	Task 2 - 40%	Composition	
11		Research		

English Studies (Proposed 2025)

	TASK 1	TASK 2	TASK 3	TASK 4	
Name of task	Common Module – Texts and Human Experiences	Elective Module F: MiTunes & texts	Elective Module D: Digital Worlds	Trial HSC	
Type of task	Writing Piece & Preparation Notes	Multimodal Creative or Management Portfolio	Collection of Coursework	Examination	
Date of task	Term 4 Week 9	Term 1 Week 8	Term 2 Week 8	Term 3 Weeks 2 & 3	
Outcomes assessed	ES12-1, ES12-4, ES12-6, ES12-8	ES12-2, ES12-4, ES12-6, ES12-8	ES12-1, ES12-3, ES12-4, ES12-6, ES12-7, ES12-10	ES12-1, ES12-2, ES12-3, ES12-5, ES12-6, ES12-8, ES12-9	
Component					Weighting
Knowledge and understanding of course content	10	20	10	10	50
Skills in : -Comprehending texts -Communicating ideas Using language accurately, appropriately and effectively	15	10	15	10	50
Total %	25	30	25	20	100

Please Note: All English Studies students are required to sit the Trial HSC Examination in Term 3 Weeks 2/3 as it is one of the Assessment Tasks for this course.

Course Calendar (120 Indicative Hours)

Week	Term 4	Term 1	Term 2	Term 3
1	Common Module	Common Module	Elective Module D: Digital Worlds	Elective Module B: Telling Us About It
2	Common Module	Elective Module F: MiTunes & texts	Elective Module D: Digital Worlds	Trial HSC Exams Task 4 - 20%
3	Common Module	Elective Module F: MiTunes & texts	Elective Module D: Digital Worlds	
4	Common Module	Elective Module F: MiTunes & texts	Elective Module D: Digital Worlds	
5	Common Module	Elective Module F: MiTunes & texts	Elective Module B: Telling Us About It	Elective Module B: Telling Us About It
6	Common Module	Elective Module F: MiTunes & texts	Elective Module B: Telling Us About It	Modules Revision
7	Common Module	Elective Module F: MiTunes & texts	Elective Module B: Telling Us About It	Modules Revision
8	Task 1 - 25%	Year 12 FOCUS WEEK Task 2 - 30%	Task 3 - 25%	Common Module Revision
9	Common Module	Elective Module D: Digital Worlds	Elective Module B: Telling Us About It	Common Module Revision
10	Common Module	Elective Module D: Digital Worlds	Elective Module B: Telling Us About It	Common Module Revision
11		Elective Module D: Digital Worlds		

Enterprise Computing

	TASK 1	TASK 2	TASK 3	TASK 4	
Name of task	<i>Project Management</i>	<i>Information Systems</i>	<i>Major Project Work</i>	<i>Trial HSC</i>	
Type of task	Minor Project	Minor Project	Major Project	Exam	
Date of task	Term 4 Week 8	Term 1 Week 8	Term 2 Week 9	Term 3 Weeks 2-3	
Outcomes assessed	H1.1, H1.2, H2.1, H2.2, H3.1, H3.2, H4.1, H5.1, H5.2	H1.1, H1.2, H2.1, H2.2, H3.1, H3.2, H4.1, H5.1, H5.2	H1.1, H1.2, H2.1, H2.2, H3.1, H3.2, H4.1, H5.1, H5.2, H6.1, H6.2, H7.1, H7.2	H1.1, H1.2, H2.1, H2.2, H3.1, H3.2, H4.1, H5.1, H5.2, H6.1, H6.2, H7.1, H7.2	
Component					Weighting
Knowledge and understanding of course content	10	15	15	20	60
Knowledge and skills in the design and development of information systems	5	10	15	10	40
Total %	15	25	30	30	100

Course Calendar (120 Indicative Hours)

Week	Term 4	Term 1	Term 2	Term 3
1	<i>Introduction to HSC</i>	Information Systems and Databases	Transaction Processing Systems	Multimedia Systems
2	Project Management	Information Systems and Databases	Transaction Processing Systems	Trial HSC Exams Task 4 30%
3	Project Management	Communication Systems	Transaction Processing Systems	
4	Project Management	Communication Systems	Transaction Processing Systems	Multimedia Systems
5	Project Management	Communication Systems	Transaction Processing Systems	Multimedia Systems
6	Project Management	Communication Systems	Multimedia Systems	Revision
7	Project Management	Communication Systems	Multimedia Systems	Revision
8	Task 1 Project Management 15%	Year 12 FOCUS WEEK Task 2 25%	Multimedia Systems	Revision
9	Information Systems and Databases	Transaction Processing Systems	Task 3 Major Project 30%	Revision
10	Information Systems and Databases	Transaction Processing Systems	Multimedia Systems	Revision
11		Transaction Processing Systems		

Exploring Early Childhood

	TASK 1	TASK 2	TASK 3	TASK 4	
Name of task	<i>Creative Toy Design</i>	<i>Children's Services</i>	<i>Starting School Booklet</i>	<i>Examination</i>	
Type of task	Practical	Investigation	In Class Task	Examination	
Date of task	Term 4 Week 9	Term 1 Week 7	Term 2 Week 9	Term 3 Weeks 2 & 3	
Outcomes assessed	H1.3, H1.4, H2.2	H2.1, H4.1, H6.1	H1.3, H2.1, H2.2, H6.2	H2.3, H2.4, H4.3, H6.2	
Component					Weighting
Knowledge and understanding of course content		25		25	50
Skills in critical thinking, research, analysis and communicating	25		25		50
Total %	25	25	25	25	100

Course Calendar (120 Indicative Hours)

Week	Term 4	Term 1	Term 2	Term 3
1	Introduction to HSC	Module 8: The Children's Services Industry	Module 7: Historical & Cultural Contexts of Childhood	Exam Revision
2	Module 2: Play and the Developing Child	Module 8: The Children's Services Industry	Module 7: Historical & Cultural Contexts of Childhood	Trial HSC Exams Task 4 25%
3	Module 2: Play and the Developing Child	Module 8: The Children's Services Industry	Module 3: Starting School	
4	Module 2: Play and the Developing Child	Module 8: The Children's Services Industry	Module 3: Starting School	Module 9: Young Children and Media
5	Module 2: Play and the Developing Child	Module 8: The Children's Services Industry	Module 3: Starting School	Module 9: Young Children and Media
6	Module 2: Play and the Developing Child	Module 7: Historical & Cultural Contexts of Childhood	Module 3: Starting School	Module 9: Young Children and Media
7	Module 2: Play and the Developing Child	Task 2 – 25%	Module 3: Starting School	Module 9: Young Children and Media
8	Module 8: The Children's Services Industry	Year 12 FOCUS WEEK	Module 3: Starting School	Module 9: Young Children and Media
9	Task 1 – 25%	Module 7: Historical & Cultural Contexts of Childhood	Task 3 – 25%	Module 9: Young Children and Media
10	Module 8: The Children's Services Industry	Module 7: Historical & Cultural Contexts of Childhood	Module 3: Starting School	Module 9: Young Children and Media
11		Module 7: Historical & Cultural Contexts of Childhood		

Film, Video and Digital Imaging

	TASK 1	TASK 2	TASK 3	TASK 4	
Name of task	Documentary Film	Mid Course Review	Film Production & Proposal	Feature Film	
Type of task	Practical Task Film Proposal, Story Board Documentation	Theory, Critique & Analysis	Film proposal & documentation	Practical Task: The Feature Film	
Date of task	Term 4 Week 10	Term 1 Week 9	Term 2 Week 9	Term 3 Week 7	
Outcomes assessed	1.1A, 1.2A, 2.1A, 2.3A, 3.1A, 3.3A, 4.3A	1.2A, 2.1A, 3.1A, 3.3A, 4.1A, 4.2A, 5.2A	1.1A, 1.2A, 2.1A, 2.2A, 3.1A, 3.3A, 4.1A, 4.2A, 5.2A	1.1A, 1.2A, 2.1A, 2.3A, 3.1A, 3.3A, 4.1A	
Component					Weighting
Artmaking	20		20	30	70
Study of Filmmaking		30			30
Total %	20	30	20	30	100

Course Calendar (120 Indicative Hours)

Week	Term 4	Term 1	Term 2	Term 3
1	<i>Introduction to HSC</i>	Commence Film Review	Commence Film Production and Proposal	Feature Film production
2	Introductory Lessons	Film Viewing	Film Production	Trial HSC Exams
3	Commence Filmmaking and Documentation	Film Coursework	Film Production	
4	Production coursework	Film Coursework and Theory	Film Production	Film production & Post Production, editing
5	Production coursework	Practical Coursework	Progress Submission	Film production & Post Production, editing
6	Production coursework	Practical Coursework	Camera Technique	Film production & Post Production, editing
7	Production coursework	Practical Coursework	Camera Technique	Task 4 Feature Film Submission 30%
8	Production coursework	Year 12 FOCUS WEEK	Camera Technique	Evaluation Film audience review
9	Production coursework & Theory	Task 2 - 30% Practical Coursework	Task 3 Assessment Submission and Evaluation 20%	Evaluation Film audience review
10	Task 1 Submission 20%	Practical Coursework	Task Presentations	Evaluation Film audience review
11		Practical Coursework		

Food Technology

	TASK 1	TASK 2	TASK 3	TASK 4	
Name of task	<i>Contemporary Food Issues</i>	<i>Australian Food Industry</i>	<i>Food Product Development</i>	<i>Trial HSC</i>	
Type of task	Research & Inclass Practical Task	Case Study – Research	Portfolio & Practical	Exam	
Date of task	Term 4 Week 8	Term 1 Week 9	Term 2 Week 8	Term 3 Weeks 2-3	
Outcomes assessed	H2.1, H3.2, H5.1	H1.1, H1.4, H3.1, H4.2	H1.3, H4.1, H4.2, H5.1	ALL	
Component					Weighting
Knowledge and understanding of course content	5		20	15	40
Knowledge and skills in designing, researching, analysing and evaluating	5	10	10	5	30
Skills in experimenting with and preparing food by applying theoretical concepts	10	20			30
Total %	20	30	30	20	100

Course Calendar (120 Indicative Hours)

Week	Term 4	Term 1	Term 2	Term 3
1	<i>Introduction to HSC</i>	Australian Food Industry	Food Product Development	Food Manufacture
2	Contemporary Nutrition	Australian Food Industry	Food Product Development	Trial HSC Exams Task 4 20%
3	Contemporary Nutrition	Australian Food Industry	Food Product Development	
4	Contemporary Nutrition	Australian Food Industry	Food Product Development	Food Manufacture
5	Contemporary Nutrition	Australian Food Industry	Food Product Development	Food Manufacture
6	Contemporary Nutrition	Australian Food Industry	Food Product Development	Food Manufacture
7	Contemporary Nutrition	Australian Food Industry	Food Product Development	Food Manufacture
8	Task 1 - 20%	Year 12 FOCUS WEEK	Task 3 - 30%	Food Manufacture
9	Contemporary Nutrition	Task 2 – 30%	Food Manufacture	Revision
10	Australian Food Industry	Food Product Development	Food Manufacture	Revision
11		Food Product Development		

History Extension 1

	TASK 1	TASK 2	TASK 3	
Name of task	History Project - Process	History Project - Essay	Trial HSC	
Type of task	Proposal Process Log Annotated Sources	Essay and Bibliography	Exam	
Date of task	Term 1 Week 10	Term 2 Week 10	Term 3 Weeks 2-3	
Outcomes assessed	HE12-1, HE12-3, HE12-3, HE 12 - 4	HE12-1, HE12-2, HE12-3, HE12-4	HE12-1, HE12-3, HE12-4	
Component				Weighting
Knowledge and understanding of significant historical ideas and processes	10	10	20	40
Skills in designing, undertaking and communicating historical inquiry and analysis	20	30	10	60
Total %	30	40	30	100

Course Calendar (60 Indicative Hours)

Week	Term 4	Term 1	Term 2	Term 3
1	<i>Introduction to HSC</i>	History Project	Constructing History – Case Studies	Constructing History – Case Studies
2	Reading History	Constructing History – Key Questions	Constructing History – Case Studies	Trial HSC Exams Task 3 30%
3	Reading History	Constructing History – Key Questions	History Project	
4	Reading History	Constructing History – Key Questions	History Project	Constructing History – Case Studies
5	Constructing History – Key Questions	History Project	History Project	Constructing History – Case Studies
6	Constructing History – Key Questions	History Project	History Project	Constructing History – Case Studies
7	Constructing History – Key Questions	Constructing History – Key Questions	History Project	Constructing History – Case Studies
8	Constructing History – Key Questions	Year 12 FOCUS WEEK	Constructing History – Case Studies	Constructing History – Key Questions
9	History Project	Constructing History – Key Questions	Constructing History – Case Studies	Constructing History – Key Questions
10	History Project	Task 1 - 30%	Task 2 - 40%	Constructing History – Key Questions
11		Constructing History – Key Questions		

Industrial Technology – Multimedia Technologies

	TASK 1	TASK 2	TASK 3	TASK 4	
Name of task	Presentation: Major Project Ideas and Development	<i>Industry Study</i>	<i>Presentation of major Project</i>	<i>Trial HSC</i>	
Type of task	Folio	Report	Practical + Written	Exam	
Date of task	Term 4 Week 7	Term 2 Week 5	Term 3 Week 1	Term 3 Weeks 2-3	
Outcomes assessed	H3.1, H3.2, H3.3, H6.1	H1.1, H1.3, H7.1	H2.1, H4.1, H4.2, H5.1, H5.2, H6.1, H6.2	H1.2, H4.3, H7.	
Component					Weighting
Knowledge and understanding of the organisation and management of, and manufacturing processes and techniques used by, the focus area industry		20		20	40
Knowledge, skills and understanding in designing, managing, problem-solving, communicating and the safe use of manufacturing processes and techniques through the design and production of a quality major project	20		30	10	60
Total %	20	20	30	30	100

Course Calendar (120 Indicative Hours)

Week	Term 4	Term 1	Term 2	Term 3
1	<i>Introduction to HSC</i>	Major Project, Industry Study	Major Project, Industry Study	Task 3 Final Project Presentation 30%
2	Major Project, Industry Study	Major Project, Industry Study	Major Project, Industry Study	Trial HSC Exams Task 4 30%
3	Major Project, Industry Study	Major Project, Industry Study	Major Project, Industry Study	
4	Major Project, Industry Study	Major Project, Industry Study	Major Project, Industry Study	Timber Products and Furniture Technologies
5	Major Project, Industry Study	Major Project, Industry Study	Task 2 Industry Study 20%	Timber Products and Furniture Technologies
6	Major Project, Industry Study	Major Project, Industry Study	Major Project	Timber Products and Furniture Technologies
7	Task 1 Presentation Project Proposal 20%	Major Project, Industry Study	Major Project	Revision
8	Major Project, Industry Study	Year 12 FOCUS WEEK	Major Project	Revision
9	Major Project, Industry Study	Major Project, Industry Study	Major Project	Revision
10	Major Project, Industry Study	Major Project, Industry Study	Major Project	Revision
11		Major Project, Industry Study		

Industrial Technology – Timber Products and Furniture Technologies

	TASK 1	TASK 2	TASK 3	TASK 4	
Name of task	Presentation: Major Project Ideas and Development	<i>Industry Study</i>	<i>Presentation of major Project</i>	<i>Trial HSC</i>	
Type of task	Folio	Report	Practical + Written	Exam	
Date of task	Term 4 Week 7	Term 2 Week 5	Term 3 Week 1	Term 3 Weeks 2-3	
Outcomes assessed	H3.1, H3.2, H3.3, H6.1	H1.1, H1.3, H7.1	H2.1, H4.1, H4.2, H5.1, H5.2, H6.1, H6.2	H1.2, H4.3, H7.	
Component					Weighting
Knowledge and understanding of the organisation and management of, and manufacturing processes and techniques used by, the focus area industry		20		20	40
Knowledge, skills and understanding in designing, managing, problem-solving, communicating and the safe use of manufacturing processes and techniques through the design and production of a quality major project	20		30	10	60
Total %	20	20	30	30	100

Course Calendar (120 Indicative Hours)

Week	Term 4	Term 1	Term 2	Term 3
1	<i>Introduction to HSC</i>	Major Project, Industry Study	Major Project, Industry Study	Task 3 Final Project Presentation 30%
2	Major Project, Industry Study	Major Project, Industry Study	Major Project, Industry Study	Trial HSC Exams Task 4 30%
3	Major Project, Industry Study	Major Project, Industry Study	Major Project, Industry Study	
4	Major Project, Industry Study	Major Project, Industry Study	Major Project, Industry Study	Timber Products and Furniture Technologies
5	Major Project, Industry Study	Major Project, Industry Study	Task 2 Industry Study 20%	Timber Products and Furniture Technologies
6	Major Project, Industry Study	Major Project, Industry Study	Major Project	Timber Products and Furniture Technologies
7	Task 1 Presentation Project Proposal 20%	Major Project, Industry Study	Major Project	Revision
8	Major Project, Industry Study	Year 12 FOCUS WEEK	Major Project	Revision
9	Major Project, Industry Study	Major Project, Industry Study	Major Project	Revision
10	Major Project, Industry Study	Major Project, Industry Study	Major Project	Revision
11		Major Project, Industry Study		

Investigating Science

	TASK 1	TASK 2	TASK 3	TASK 4	
Name of task	<i>First-hand</i>	<i>Module</i>	<i>Depth Study</i>	<i>Trial HSC</i>	
Type of task	Practical Exam	Written quiz	Scientific Report	Exam	
Date of task	Term 4 Week 8	Term 1 Week 8	Term 2 Week 9	Term 3 Weeks 2 & 3	
Component	INS11/12-1 INS11/12-2 INS11/12-3 INS11/12-5 INS11/12-7 INS12-12	INS11/12-4 INS11/12-5 INS11/12-6 INS12-12 INS12-13	INS11/12-1 INS11/12-2 INS11/12-3 INS11/12-4 INS11/12-5 INS11/12-7 INS12-14	INS11/12-5 INS11/12-6 INS12-12 INS12-13 INS12-14 INS12-15	
Outcomes assessed					Weighting
Component	5	5	10	20	60
Total %		20	30		Weighting
					100

Course Calendar (120 Indicative Hours)

Week	Term 4	Term 1	Term 2	Term 3
1	<i>Introduction to HSC</i>	Module 6 Technologies	Module 7 Fact or Fallacy	Revision
2	Module 5 - Scientific Investigation	Module 6 -Technologies	Module 7 Fact or Fallacy	Trial HSC Exams Task 4 30%
3	Module 5 - Scientific Investigation	Module 6 -Technologies	Module 7 Fact or Fallacy	
4	Module 5 - Scientific Investigation	Module 6 -Technologies	Module 7 Fact or Fallacy	Module 8 Science & Society
5	Module 5 - Scientific Investigation	Module 6 Technologies	Module 8 Science & Society	Module 8 Science & Society
6	Module 5 - Scientific Investigation	Module 6 Technologies	Module 8 Science & Society	HSC Revision
7	Module 5 - Scientific Investigation	Module 7 Fact or Fallacy	Module 8 Science & Society	HSC Revision
8	Task 1 – 20% FHI	Year 12 FOCUS WEEK Task 2 - 20%	Module 8 Science & Society	HSC Revision
9	Module 5 - Scientific Investigation	Module 7 Fact or Fallacy	Task 3 – 30%	HSC Revision
10	Module 6 -Technologies	Module 7 Fact or Fallacy	Module 8 Science & Society	HSC Revision
11		Module 7 Fact or Fallacy		

Japanese Beginners

	TASK 1	TASK 2	TASK 3	TASK 4	
Name of task	<i>School Life</i>	<i>Travelling in Japan</i>	<i>Future Plans</i>	<i>Trial HSC</i>	
Type of task	In-class test (Responding in English to written and aural texts) + oral interview in Japanese	In-class test (Responding in English to written and aural texts) + written task in Japanese	In-class test (Responding in English to written and aural texts) + oral interview in Japanese	Exam	
Date of task	Term 4 Week 8	Term 1 Week 11	Term 2 Week 9	Term 3 Weeks 2-3	
Outcomes assessed	1.1, 1.2, 1.3, 2.1, 2.2, 2.3, 2.4, 2.5	2.1, 2.2, 2.3, 2.4, 2.5, 2.6, 3.1, 3.2, 3.3	1.1, 1.2, 1.3, 2.1, 2.2, 2.3, 2.4, 2.5, 2.6	2.1, 2.2, 2.3, 2.4, 2.5, 2.6, 3.1, 3.2, 3.3, 3.4	
Component					Weighting
Listening	5	7	8	10	30
Reading	5	8	7	10	30
Speaking	10		10		20
Writing		10		10	20
Total %	20	25	25	30	100

Course Calendar (120 Indicative Hours)

Week	Term 4	Term 1	Term 2	Term 3
1	<i>Introduction to HSC</i>	U7 School Life	U9 Traveling in Japan	Trial Review
2	U5 Japanese Homes + Neighbourhood	U7 School Life	U10 Future in Japan	Trial HSC Exams Task 4 30%
3	U5 Japanese Homes + Neighbourhood	U8 Exploring Japan	U10 Future in Japan	
4	U6 Plain Form	U8 Exploring Japan	U10 Future in Japan	Speaking and Skill Building
5	U6 Plain Form	U8 Exploring Japan	Task Preparation	Speaking and Skill Building
6	U6 Plain Form	U9 Traveling in Japan	Integrated Review	Speaking and Skill Building
7	U6 Plain Form	U9 Traveling in Japan	Integrated Review	Speaking and Skill Building
8	Task 1 - 20% U7 School Life	Year 12 FOCUS WEEK	Integrated Review	Speaking and Skill Building
9	U7 School Life	U9 Traveling in Japan	Task 3 - 25% Integrated Review	Speaking and Skill Building
10	U7 School Life	U9 Traveling in Japan	Trial Review	Speaking and Skill Building
11		Task 2 - 25% U9 Traveling in Japan		

Legal Studies

	TASK 1	TASK 2	TASK 3	TASK 4	
Name of task	<i>Crime</i>	<i>Human Rights</i>	<i>Family</i>	<i>Trial HSC</i>	
Type of task	Topic Test	Multiple Choice & Short Answer	In class extended response	Exam	
Date of task	Term 4 Week 9	Term 1 Week 9	Term 2 Week 8	Term 3 Weeks 2-3	
Outcomes assessed	H1, H3	H2, H6, H8	H4, H8	H5, H7, H9, H10	
Component					Weighting
Knowledge and understanding of course content	15	5	5	20	45
Analysis and evaluation	5	5	5	5	20
Inquiry and research		5	10		15
Communication of legal information, ideas and issues in appropriate forms	5	5	5	5	20
Total %	25	20	25	30	100

Course Calendar (120 Indicative Hours)

Week	Term 4	Term 1	Term 2	Term 3
1	<i>Introduction to HSC</i>	Crime	Family	Consumers
2	Crime	Human Rights	Family	Trial HSC Exams Task 4 30%
3	Crime	Human Rights	Family	
4	Crime	Human Rights	Family	Consumers
5	Crime	Human Rights	Family	Consumers
6	Crime	Human Rights	Family	Consumers
7	Crime	Human Rights	Family	Consumers
8	Crime	Year 12 FOCUS WEEK	Task 3 - 25%	Consumers
9	Task 1 - 20%	Task 2 - 25%	Family/Consumers	Consumers
10	Crime	Family	Consumers	Consumers
11		Family		

Marine Studies

	TASK 1	TASK 2	TASK 3	TASK 4	
Name of task	<i>Seafood Processing and Handling</i>	<i>Marine Aquariums</i>	<i>Coral Reef Ecology</i>	<i>PIP</i>	
Type of task	Food Practical/Video	Field/Practical	Research Task	Scientific Report	
Date of task	Term 4 Week 5	Term 1 Week 9	Term 2 Week 5	Term 3 Week 2	
Outcomes assessed	1.1, 2.1, 3.1, 4.1, 5.3, 5.4	1.1, 2.2, 2.3, 3.1, 4.2, 5.1, 5.3, 5.4	1.3, 1.5, 2.3, 3.2, 3.3, 3.4, 5.2	1.3, 1.4, 2.3, 3.1, 3.2, 3.3, 3.4, 5.2	
Component					Weighting
Skills in Working Scientifically	15	10	10	15	50
Knowledge and Understanding	10	15	15	10	50
Total %	25	25	25	25	100

Course Calendar (120 Indicative Hours)

Week	Term 4	Term 1	Term 2	Term 3
1	Seafood Handling and processing	Marine Anatomy & Physiology	Coral Reef Ecology	Seabirds of our Coast
2	Seafood Handling and processing	Marine Anatomy & Physiology	Coral Reef Ecology	HSC Trial
3	Seafood Handling and processing	Marine Anatomy & Physiology	Coral Reef Ecology	
4	Seafood Handling and processing	Marine Aquarium	Task 3 – 25%	Task 4 PIP – 25%
5	Task 1 – 25%	Marine Aquarium	PIP	Seabirds of our Coast
6	Aquaculture	Marine Aquarium	PIP	Seabirds of our Coast
7	Aquaculture	Marine Aquarium	PIP	Marine Archaeology
8	Aquaculture	Year 12 FOCUS WEEK	PIP	Marine Archaeology
9	Aquaculture	Task 2 – 25% Marine Aquarium	PIP	Marine Archaeology
10	Marine Anatomy & Physiology	Coral Reef Ecology	PIP	Marine Archaeology
11		Coral Reef Ecology		

Mathematics Advanced

	TASK 1	TASK 2	TASK 3	TASK 4	
Name of task	<i>Investigation</i>	<i>Topic Review</i>	<i>Topic Review</i>	<i>Trial HSC</i>	
Type of task	Assignment	Written	Written	Exam	
Date of task	Term 4 Week 8	Term 1 Week 8	Term 2 Week 7	Term 3 Weeks 2-3	
Outcomes assessed	H1, H2, H3	H1, H2, H3, H4, H5	H1, H2, H3, H4, H5, H6, H7, H9	H1, H2, H3, H4, H5, H6, H7, H8, H9	
Component					Weighting
Understanding, Fluency & Communication	10	15	10	15	50
Problem Solving, Reasoning and Justification	10	15	10	15	50
Total %	20	30	20	30	100

Course Calendar (120 Indicative Hours)

Week	Term 4	Term 1	Term 2	Term 3
1	<i>Logarithms</i>	Trigonometric functions	Statistics	Continuous probability distributions
2	Trigonometric functions	Further differentiation	Correlation and regression	Trial HSC Exams Task 4 30%
3	Trigonometric functions	Further differentiation	Correlation and regression	
4	Discrete Probability Distributions	Geometrical applications of differentiation	Financial applications of sequences	Sequences and series
5	Discrete Probability Distributions	Geometrical applications of differentiation	Financial applications of sequences	Transformations of functions
6	Sequences and Series	Geometrical applications of differentiation	Financial applications of sequences	Trigonometric functions
7	Sequences and Series	Geometrical applications of differentiation	Task 3 – 20%	Further differentiation
8	Task 1 – 20%	Year 12 FOCUS WEEK Task 2 – 30%	Continuous probability distributions	Integration
9	Transformations of functions	Integration	Continuous probability distributions	Revision
10	Trigonometric functions	Integration	Continuous probability distributions	Revision
11		Statistics		

Mathematics Extension 1

	TASK 1	TASK 2	TASK 3	TASK 4	
Name of task	Topic Review	Topic Review	Investigation	Trial HSC	
Type of task	Written	Written	Assignment	Exam	
Date of task	Term 4 Week 8	Term 1 Week 8	Term 2 Week 8	Term 3 Week 2-3	
Outcomes assessed	ME12-1 ME12-2 ME12-3	ME12-1 ME12-2 ME12-3 ME12-4 ME12-6	ME12-1 ME12-2 ME12-3 ME12-4 ME12-5 ME12-6 ME12-7	ME12-1 ME12-2 ME12-3 ME12-4 ME12-5 ME12-6 ME12-7	
Component					Weighting
Understanding, Fluency & Communication	10	15	10	15	50
Problem Solving, Reasoning and Justification	10	15	10	15	50
Total %	20	30	20	30	100

Course Calendar (60 Indicative Hours)

Week	Term 4	Term 1	Term 2	Term 3
1	Proof by mathematical induction	Further Trigonometric Equations	Further Vectors	Revision
2	Proof by mathematical induction	Derivative of inverse trigonometric functions	Further Vectors	Trial HSC Exams Task 4 30%
3	Vectors	Derivative of inverse trigonometric functions	Differential Equation	
4	Vectors	Derivative of inverse functions	Differential Equation	Vectors
5	Vectors	Further Integration	Differential Equation	Derivative of inverse functions
6	Vectors	Further Integration	Binomial Distributions	Differential Equation
7	Trigonometric Identities	Further Integration	Binomial Distributions	Binomial Distributions
8	Trigonometric Identities	Year 12 FOCUS WEEK Task 2 – 30%	Task 3 20%	Trigonometric Identities
9	Task 1- 20%	Further Integration	Binomial Distributions	Revision
10	Further Trigonometric Equations	Further Integration	Binomial Distributions	Revision
11		Further Integration		

Mathematics Extension 2

	TASK 1	TASK 2	TASK 3	TASK 4	
Name of task	Topic Review	Topic Review	Investigation	Trial HSC	
Type of task	Written	Written	Assignment	Exam	
Date of task	Term 4 Week 9	Term 1 Week 8	Term 2 Week 9	Term 3 Week 2-3	
Outcomes assessed	MEX12-1 MEX12-2 MEX12-4 MEX12-7 MEX12-8	MEX12-1 MEX12-2 MEX12-3 MEX12-4 MEX12-5 MEX12-7 MEX12-8	MEX12-1 MEX12-2 MEX12-4 MEX12-5 MEX12-6 MEX12-7 MEX12-8	MEX12-1 MEX12-2 MEX12-3 MEX12-4 MEX12-5 MEX12-6 MEX12-7 MEX12-8	
Component					Weighting
Understanding, Fluency & Communication	10	15	10	15	50
Problem Solving, Reasoning and Justification	10	15	10	15	50
Total %	20	30	20	30	100

Course Calendar (60 Indicative Hours)

Week	Term 4	Term 1	Term 2	Term 3
1	Complex numbers	Mathematical Proofs	Further Mathematical Induction	Revision
2	Complex numbers	3D Vectors	Further Mathematical Induction	Trial HSC Exams Task 4 30%
3	Applying Complex numbers	3D Vectors	Further Mathematical Induction	
4	Applying Complex numbers	3D Vectors	Mechanics	Applying Complex numbers
5	Applying Complex numbers	Further Integration	Mechanics	Mathematical Proofs
6	Applying Complex numbers	Further Integration	Mechanics	3D Vectors
7	Applying Complex numbers	Further Integration	Mechanics	Further Integration
8	Mathematical Proofs	Year 12 FOCUS WEEK Task 2 – 30%	Mechanics	Further Mathematical Induction
9	Task 1 – 20%	Further Integration	Task 3 – 20%	Revision
10	Mathematical Proofs	Further Integration	Mechanics	Revision
11		Further Integration		

Mathematics Standard 2

	TASK 1	TASK 2	TASK 3	TASK 4	
Name of task	<i>Investigation</i>	<i>Topic Review</i>	<i>Topic Review</i>	<i>Trial HSC</i>	
Type of task	Assignment	Written	Written	Exam	
Date of task	Term 4 Week 9	Term 1 Week 8	Term 2 Week 7	Term 3 Weeks 2-3	
Outcomes assessed	MS2-12.5, MS2-12.9, MS2-12.10	MS2-12.4 MS2-12.5, MS2-12.8 MS2-12.9, MS2-12.10	MS2-12.4 MS2-12.5, MS2-12.6 MS2-12.8 MS2-12.9, MS2-12.10	MS2-12.4 MS2-12.5, MS2-12.6 MS2-12.8 MS2-12.9, MS2-12.10	
Component					Weighting
Understanding, Fluency and Communication	15	10	10	15	50
Problem Solving, Reasoning & Justification	15	10	10	15	50
Total %	30	20	20	30	100

Course Calendar (120 Indicative Hours)

Week	Term 4	Term 1	Term 2	Term 3
1	Working With Time	Network Concepts	Bivariate data Analysis Section 4	Revision
2	Working With Time	Investment & Loans	Bivariate data Analysis Section 4	Trial HSC Exams Task 4 30%
3	Working With Time	Investment & Loans	Bivariate data Analysis Section 4	
4	Budgeting & Household Expenses	Non Right Angled Trigonometry	Annuities	Normal Distribution
5	Budgeting & Household Expenses	Non Right Angled Trigonometry	Annuities	Normal Distribution
6	Rates and Ratios	Non Right Angled Trigonometry	Annuities	Normal Distribution
7	Rates and Ratios	Non Right Angled Trigonometry	Task 3 Topic Review 20%	Critical Path Analysis
8	Rates and Ratios	Year 12 FOCUS WEEK Task 2 Topic Review 20%	Non Linear Relationships	Critical Path Analysis
9	Task 1 Assignment 30%	Simultaneous Equations	Non Linear Relationships	Critical Path Analysis
10	Network Concepts	Simultaneous Equations	Non Linear Relationships	Revision
11		Simultaneous Equations		

Mathematics Standard 1

	TASK 1	TASK 2	TASK 3	TASK 4	
Name of task	<i>Investigation</i>	<i>Topic Review</i>	<i>Topic Review</i>	<i>Trial HSC</i>	
Type of task	Assignment	Written	Written	Exam	
Date of task	Term 4 Week 9	Term 1 Week 8	Term 2 Week 7	Term 3 Weeks 2-3	
Outcomes assessed	MS1-12-5, MS1-12-9MS1-12-10	MS1-12-3, MS1-12-8, MS1-12-9, MS1-12-10	MS1-12-3, MS1-12-8, MS1-12-9, MS1-12-10	MS1-12-3, MS1-12-8, MS1-12-9, MS1-12-10	
Component					Weighting
Understanding, Fluency and Communication	15	10	10	15	50
Problem Solving, Reasoning & Justification	15	10	10	15	50
Total %	30	20	20	30	100

Course Calendar (120 Indicative Hours)

Week	Term 4	Term 1	Term 2	Term 3
1	<i>Introduction to HSC</i>	Networks and Paths	Solutions of Linear Relationships	Depreciation & Loss
2	Rates	Networks and Paths	Solutions of Linear Relationships	Trial HSC Exams Task 4 30%
3	Rates	Networks and Paths	Solutions of Linear Relationships	
4	Rates	Investments	Further Statistical Analysis	Depreciation & Loss
5	Rates	Investments	Further Statistical Analysis	Depreciation & Loss
6	Rates	Investments	Scale Drawings	Graphs of Practical Situations
7	Task 1 - 30%	Investments	Task 3 - 20%	Graphs of Practical Situations
8	Networks and Paths	Year 12 FOCUS WEEK Task 2 - 20%	Scale Drawings	Graphs of Practical Situations
9	Networks and Paths	Right Angled Trigonometry	Scale Drawings	Graphs of Practical Situations
10	Networks and Paths	Right Angled Trigonometry	Depreciation & Loss	Revision
11		Right Angled Trigonometry		

Modern History

	TASK 1	TASK 2	TASK 3	TASK 4	
Name of task	<i>Power & Authority in the Modern World 1919-1946</i>	<i>National Study: Russia</i>	<i>Peace & Conflict: Conflict in Europe</i>	<i>Trial HSC</i>	
Type of task	Source Analysis and Written Response	Historical Analysis: A written interview with Stalin	Essay	Exam	
Date of task	Term 4 Week 9	Term 1 Week 9	Term 2 Week 9	Term 3 Weeks 2-3	
Outcomes assessed	MH12-6 MH12-7 MH12-8 MH12-9	MH12-1 MH12-2 MH12-3 MH12-5 MH12-9	MH12-3 MH12-4 MH12-6 MH12-7 MH12-8 MH12-9	All Outcomes	
Component					Weighting
Knowledge and understanding of course content	5	10	5	20	40
Historical skills in the analysis and evaluation of sources and interpretations	5		10	5	20
Historical inquiry and research	5	5	10		20
Communication of historical understanding in appropriate forms	5	5	5	5	20
Total %	20	20	30	30	100

Course Calendar (120 Indicative Hours)

Week	Term 4	Term 1	Term 2	Term 3
1	<i>Introduction to HSC</i>	National Study: Russia	Peace & Conflict: Europe	Revision
2	Power & Authority	National Study: Russia	Peace & Conflict: Europe	Trial HSC Exams Task 4 30%
3	Power & Authority	National Study: Russia	Change in the Modern World: South Africa	
4	Power & Authority	National Study: Russia	Change in the Modern World: South Africa	Revision Power & Authority
5	Power & Authority	National Study: Russia	Change in the Modern World: South Africa	Revision Power & Authority
6	Power & Authority	National Study: Russia	Change in the Modern World: South Africa	Revision National Study: Russia
7	Power & Authority	National Study: Russia	Change in the Modern World: China	Revision Peace & Conflict: Europe
8	Power & Authority	Year 12 FOCUS WEEK	Change in the Modern World: South Africa	Revision Peace & Conflict: Europe
9	Task 1 - 20% National Study: Russia	Task 2 - 20% Peace & Conflict: Europe	Task 3 - 30% Change in the Modern World: South Africa	Revision Change in the Modern World: South Africa
10	National Study: Russia	Peace & Conflict: Europe	Change in the Modern World: South Africa	Revision Change in the Modern World: South Africa
11		Peace & Conflict: Europe		

Music 1

	TASK 1	TASK 2	TASK 3	TASK 4	
Name of task	Core Composition & Aural Analysis	Viva Voce of Core Performance & Elective 1: "Work in Progress Night 1"	Trial HSC Core Performance, Elective 1, 2 & 3 (Core Performance & elective 1 must be played for Progress report)	Trial HSC Aural Examination	
Type of task	Composition & Aural Skills	Performance, Musicology & Elective 1	Practical Examination	Aural Examination	
Date of task	Term 4 Week 8	Term 1 Weeks 9-10	Term 2 Week 10	Term 3 Weeks 2-3	
Outcomes assessed	H2, H3, H4, H5, H6, H7, H8, H10, H11	Musicology: H2, H4, H5, H6, H10, H11 Performance: H1, H7, H8, H9, H10, H11 Composition: H2, H3, H4, H5, H6, H7, H8, H10, H11	Musicology: H2, H4, H5, H6, H7, H10, H11 Performance: H1, H5, H7, H9, H10, H11 Composition: H2, H3, H4, H5, H6, H7, H8, H10, H11	H4, H5, H6, H7, H8, H10, H11	
Component					Weighting
Performance		10			10
Composition	10				10
Musicology		10			10
Aural	10			15	25
Electives		5	40		45
Total %	20	25	40	15	100

Course Calendar (120 Indicative Hours)

Week	Term 4	Term 1	Term 2	Term 3
1	Introduction to HSC	Music for Radio, Film, Television & Multimedia - Performance	20 th & 21 st Century Music	Revision
2	Music for Radio, Film, Television & Multimedia - Performance	Independent Research	20 th & 21 st Century Music	Trial HSC Exams Task 4 30%
3	Music for Radio, Film, Television & Multimedia - Performance	Independent Research	20 th & 21 st Century Music	
4	Music for Radio, Film, Television & Multimedia - Performance	Independent Research	20 th & 21 st Century Music	
5	Music for Radio, Film, Television & Multimedia - Performance	Independent Research	20 th & 21 st Century Music	Performance revision
6	Music for Radio, Film, Television & Multimedia - Performance	Independent Research	20 th & 21 st Century Music	Performance revision
7	Music for Radio, Film, Television & Multimedia - Performance	Independent Research	20 th & 21 st Century Music	Performance revision
8	Task 1 20%	Year 12 FOCUS WEEK	20 th & 21 st Century Music	Revision - Aural
9	Music for Radio, Film, Television & Multimedia - Performance	Task 2 20% Independent Research	20 th & 21 st Century Music	Revision - Aural
10	Music for Radio, Film, Television & Multimedia - Performance	Task 2 cont. Independent Research	Task 3 30%	Revision - Aural
11		Independent Research		

Personal Development, Health and Physical Education

	TASK 1	TASK 2	TASK 3	TASK 4	
Name of task	<i>Examining Australian Sport</i>	<i>Diabetes in Australia</i>	<i>Planning for the City to Surf</i>	<i>HSC Trial</i>	
Type of task	Investigation Task	Research & Repond	Case Study Analysis	Exam	
Date of task	Term 4 Week 9	Term 1 Week 10	Term 2 Week 9	Term 3 Week 2-3	
Outcomes assessed	H12, H16	H1, H2, H4, H15	H7, H8, H11, H17	H3, H9, H5, H12, H17	
Component					Weighting
Knowledge and understanding of course content	5	10	10	15	40
Skills in critical thinking, research, analysis and communicating	10	20	20	10	60
Total %	15	30	30	25	100

Course Calendar (120 Indicative Hours)

Week	Term 4	Term 1	Term 2	Term 3
1	Introduction to HSC	Sport and Physical Activity in Australian Society	Factors Affecting Performance	Improving Performance
2	Sport and Physical Activity in Australian Society	Health Priorities in Australia	Factors Affecting Performance	Trial HSC Exams Task 4 25%
3	Sport and Physical Activity in Australian Society	Health Priorities in Australia	Factors Affecting Performance	
4	Sport and Physical Activity in Australian Society	Health Priorities in Australia	Factors Affecting Performance	Improving Performance
5	Sport and Physical Activity in Australian Society	Health Priorities in Australia	Factors Affecting Performance	Improving Performance
6	Sport and Physical Activity in Australian Society	Health Priorities in Australia	Factors Affecting Performance	Improving Performance
7	Sport and Physical Activity in Australian Society	Health Priorities in Australia	Factors Affecting Performance	Improving Performance
8	Sport and Physical Activity in Australian Society	Year 12 FOCUS WEEK	Factors Affecting Performance	Improving Performance
9	Task 1 – 15%	Health Priorities in Australia	Task 3 – 30%	Improving Performance
10	Sport and Physical Activity in Australian Society	Task 2 – 30%	Factors Affecting Performance	Revision
11		Health Priorities in Australia		

Photography

	TASK 1	TASK 2	TASK 3	TASK 4	
Name of task	Artmaking Review	Portraiture Practices	The Photo Essay	Exam & Folio Submission	
Type of task	"Re-Imagine" Digital practices task	Curated portfolio & written response	Field work: Practical task	Final portfolio + website of curated images & related exam	
Date of task	Term 4 Week 9	Term 1 Week 10	Term 2 Week 8	Term 3 Week 6	
Outcomes assessed	M1, M2, M3, M4, M5, CH1, CH2, CH3	M1, M3, M4, M5, CH1, CH2, CH3, CH4	M1, M2, M3, M4, M5, CH1, CH2, CH3, CH4, CH5	M1, M2, M3, M4, M5, CH4, CH5	
Component					Weighting
Artmaking	15	15	15	25	70
Study of Photography	10	10		10	30
Total %	25	25	15	35	100

Course Calendar (120 Indicative Hours)

Week	Term 4	Term 1	Term 2	Term 3
1	<i>Introduction to HSC</i>	Commence Portraiture Artmaking & Study	Documentary Photography	Portfolio Review & Post Production
2	Commence Course: Digital Modules	Portraiture Study of Photography	Documentary Photography	Trial HSC Exams
3	Digital Modules	Portraiture	Field Trip (Cairns)	
4	Commence What Is It? Artmaking & Study	Portraiture	Documentary Photography	Portfolio Production
5	Re-Imagine	Portraiture	Documentary Photography	Portfolio Production
6	Re-Imagine	Portraiture, Curating images	Documentary Photography	Task 4 HSC Folio Submission 35%
7	Re-Imagine	Portraiture, Curating images	Field Trip (Sydney)	Portfolio Review & Evaluation
8	Re-Imagine	Year 12 FOCUS WEEK	Task 3 Portfolio Review and Research 15%	Time Based Forms
9	Task 1 Portfolio Review and Research 25%	Commence Temporal Accounts	Evaluation & curation	Time Based Forms
10	Evaluation & curation	Task 2 Portfolio Review and Research 25%	Portfolio Review & Post Production	Time Based Forms
11		Temporal Accounts		

Physics

	TASK 1	TASK 2	TASK 3	TASK 4	
Name of task	Scientific Skills	Depth Study	Module Review	Trial HSC	
Type of task	Practical Exam	Research/ Practical	In class task	Exam	
Date of task	Term 4 Week 8	Term 1 Week 8	Term 2 Week 7	Term 3 Weeks 2 & 3	
Outcomes assessed	PH12-3 PH12-5	PH12-1 PH12-2 PH12-3 PH12-12	PH12-4 PH12-5 PH12-7 PH12-14	PH12-5 PH12-6 PH12-7 PH12-12 PH12-13 PH12-14 PH12-15	
Outcomes					Weighting
assessed	PH12-6	PH12-3 PH12-7	15	15	60
Knowledge and Understanding	PH12-12	PH12-12 PH PH12-13 PH12-14	5	15	40
Component	30	20	20	30	Weighting

Course Calendar (120 Indicative Hours)

Week	Term 4	Term 1	Term 2	Term 3
1	<i>Introduction to HSC</i>	Module 6- Electromagnetism	Module 7-The Nature of Light	Module 8-From the universe to the atom
2	Scientific Skills	Module 6- Electromagnetism	Module 7-The Nature of Light	Trial HSC Exams Task 4 30%
3	Module 5-Advanced Mechanics	Module 6- Electromagnetism	Module 7-The Nature of Light	
4	Module 5-Advanced Mechanics	Module 6- Electromagnetism	Module 7-The Nature of Light	
5	Module 5-Advanced Mechanics	Module 6- Electromagnetism	Module 7-The Nature of Light	Module 8-From the universe to the atom
6	Module 5-Advanced Mechanics	Module 6- Electromagnetism	Module 7-The Nature of Light	Module 8-From the universe to the atom
7	Module 5-Advanced Mechanics	Module 6- Electromagnetism	Task 3 – 20%	Module 8-From the universe to the atom
8	Task 1 – 20%	Task 2 – 30% Year 12 FOCUS WEEK	Module 8-From the universe to the atom	Trial HSC Revision
9	Module 5-Advanced Mechanics	Module 7-The Nature of Light	Module 8-From the universe to the atom	Trial HSC Revision
10	Module 5-Advanced Mechanics	Module 7-The Nature of Light	Module 8-From the universe to the atom	Trial HSC Revision
11		Module 7-The Nature of Light		

Science Extension

	TASK 1	TASK 2	TASK 3	
Name of task	<i>Project Proposal</i>	<i>Module Review</i>	<i>Scientific Research Report</i>	
Type of task	Secondary research and Portfolio	Written Quiz	Final Report and Portfolio	
Date of task	Term 1 Week 4	Term 2 Week 10	Term 3 Week 4	
Outcomes assessed	SE1, SE2, SE3, SE5, SE7	SE1, SE2, SE3, SE4, SE5, SE6, SE7	SE1, SE2, SE3, SE4, SE5, SE6, SE7	
Component				Weighting
Communicating Scientifically	15	10	10	35
Gathering, recording, analysing and evaluating data	10	15	10	35
Application of scientific research skills	5	5	20	30
Total %	30	30	40	100

Course Calendar (60 Indicative Hours)

Week	Term 4	Term 1	Term 2	Term 3
1	<i>Introduction to HSC</i>	Module 2: The Scientific Research Proposal	Module 3: The Data, Evidence and Decisions	Module 4: The Research Report
2	Module 1: The Foundations of Scientific Thinking	Module 2: The Scientific Research Proposal	Module 3: The Data, Evidence and Decisions	Trial HSC Exams
3	Module 1: The Foundations of Scientific Thinking	Module 2: The Scientific Research Proposal	Module 3: The Data, Evidence and Decisions	
4	Module 1: The Foundations of Scientific Thinking	Task 1 – 30%	Module 4: The Research Report	Task 3 – 40%
5	Module 1: The Foundations of Scientific Thinking	Module 3: The Data, Evidence and Decisions	Module 4: The Research Report	HSC Revision
6	Module 1: The Foundations of Scientific Thinking	Module 3: The Data, Evidence and Decisions	Module 4: The Research Report	HSC Revision
7	Module 1: The Foundations of Scientific Thinking	Module 3: The Data, Evidence and Decisions	Module 4: The Research Report	HSC Revision
8	Module 2: The Scientific Research Proposal	Year 12 FOCUS WEEK	Module 4: The Research Report	HSC Revision
9	Module 2: The Scientific Research Proposal	Module 3: The Data, Evidence and Decisions	Module 4: The Research Report	HSC Revision
10	Module 2: The Scientific Research Proposal	Module 3: The Data, Evidence and Decisions	Task 2 – 30%	HSC Revision
11		Module 3: The Data, Evidence and Decisions		

Society and Culture

	TASK 1	TASK 2	TASK 3	TASK 4	
Name of task	<i>PIP Presentation and Proposal</i>	<i>Social and Cultural Continuity and Change</i>	<i>Depth Study 1 Belief Systems and Ideologies</i>	<i>Trial HSC</i>	
Type of task	Multimodal task	Report	In-class Task	Exam	
Date of task	Term 4 Week 6	Term 1 Week 6	Term 2 Week 7	Term 3 Weeks 2-3	
Outcomes assessed	H2, H4, H6, H7, H8	H1, H3, H5, H9, H10	H1, H5, H7, H9, H10	H3, H5, H6, H7, H10	
Component					Weighting
Knowledge and understanding of course content		10	20	20	50
Application and evaluation of social and cultural research methods	10		10	10	30
Communication of information, ideas and issues in appropriate forms	10	10			20
Total %	20	20	30	30	100

Note: Since the final project will be assessed externally, no part of the product is to be assessed as part of the school assessment program. The Personal Interest Project (PIP) process, however, may be assessed.

Course Calendar (120 Indicative Hours)

Week	Term 4	Term 1	Term 2	Term 3
1	<i>Introduction to HSC & PIP Preparation</i>	Social Continuity and Change	Depth Study 1	Depth Study 2
2	<i>Introduction to HSC & PIP Preparation</i>	Social Continuity and Change	Depth Study 1	Trial HSC Exams Task 4 - 30% + PIP SUBMISSION TO NESA
3	<i>Introduction to HSC & PIP Preparation</i>	Social Continuity and Change	Depth Study 1	
4	Personal Interest Project	Social Continuity and Change	Depth Study 1	Depth Study 2
5	Personal Interest Project	Social Continuity and Change	Depth Study 1	Depth Study 2
6	Task 1 - 20% Personal Interest Project	Task 2 - 20% Personal Interest Project	Depth Study 1	Depth Study 2
7	Social & cultural continuity & change	Personal Interest Project	Task 3 - 30% Depth Study 1	Revision
8	Social Continuity and Change	Year 12 FOCUS WEEK	Depth Study 2	Revision
9	Social Continuity and Change	Personal Interest Project	Depth Study 2	Revision
10	Social Continuity and Change	Personal Interest Project	Depth Study 2	Revision
11		Personal Interest Project		

Software Engineering

	TASK 1	TASK 2	TASK 3	TASK 4	
Name of task	<i>Topic Test</i>	<i>Programming Task</i>	<i>Major Software Project</i>	<i>Trial HSC</i>	
Type of task	Written	Written/ Practical	Written/ Practical	Exam	
Date of task	Term 4 Week 7	Term 1 Week 8	Term 2 Week 8	Term 3 Weeks 2-3	
Outcomes assessed	H1.1, H1.3	H1.1, H2.1, H2.2	H4.3, H6.1, H6.2, H6.3, H6.4	H3.1, H3.2, H4.1, H4.2	
Component					Weighting
Knowledge and understanding of course content.	10	10	10	20	50
Knowledge and skills in the design and development of software solutions	5	15	20	10	50
Total %	15	25	30	30	100

Course Calendar (120 Indicative Hours)

Week	Term 4	Term 1	Term 2	Term 3
1	<i>Introduction to HSC</i>	Development and impact of software solutions	Implementation of Software solutions	Developing a Software package
2	Interrelationship between software and hardware	Application of software development applications	Implementation of Software solutions	Trial HSC Exams Task 4 30%
3	Interrelationship between software and hardware	Application of software development applications	Maintenance of Software Solutions	
4	Interrelationship between software and hardware	Design of Software Solutions	Maintenance of Software Solutions	Exam Review
5	Interrelationship between software and hardware	Design of Software Solutions	Task 3 - 30%	Interrelationship between software and hardware
6	Interrelationship between software and hardware	Design of Software Solutions	Developing a Software package	Development and impact of software solutions
7	Interrelationship between software and hardware	Design of Software Solutions	Developing a Software package	Application of software development applications
8	Task 1 - 15%	Task 2: - 25% Year 12 FOCUS WEEK	Developing a Software package	Design of Software Solutions
9	Development and impact of software solutions	Implementation of Software solutions	Developing a Software package	Implementation of Software solutions
10	Development and impact of software solutions	Implementation of Software solutions	Developing a Software package	Developing a Software package
11		Implementation of Software solutions		

Sport, Lifestyle and Recreation

	TASK 1	TASK 2	TASK 3	TASK 4	
Name of task	<i>Aquatics - Water Safety</i>	<i>Games & Sports 1</i>	<i>Sports Injuries and Resistance Training</i>	<i>Games & Sports 1/2</i>	
Type of task	Topic Test	Practical Review	Topic Test	Practical Review	
Date of task	Term 4 Week 9	Term 1 Week 9	Term 3 Week 4	Term 3 Week 6	
Outcomes assessed	1.3, 3.1, 4.4, 4.5	1.1, 2.3, 5.2, 5.3	2.1, 2.5, 3.2, 3.6	2.3, 5.2, 5.3, 5.5	
Component					Weighting
Knowledge and understanding	20	5	20	5	50
Skills	10	15	10	15	50
Total %	30	20	30	20	100

Course Calendar (120 Indicative Hours)

Week	Term 4	Term 1	Term 2	Term 3
1	<i>Introduction to HSC</i>	Sports Injuries	Resistance Training	Social Perspectives of Games and Sports
2	Aquatics	Sports Injuries	Resistance Training	Trial HSC Exams
3	Aquatics	Sports Injuries	Resistance Training	
4	Aquatics	Sports Injuries	Resistance Training	Task 3 30%
5	Aquatics	Sports Injuries	Resistance Training	Social Perspectives of Games and Sports
6	Aquatics	Sports Injuries	Resistance Training	Task 4 20%
7	Aquatics	Sports Injuries	Resistance Training	Social Perspectives of Games and Sports
8	Aquatics	Year 12 FOCUS WEEK	Resistance Training	Social Perspectives of Games and Sports
9	Task 1 30%	Task 2 20%	Resistance Training	Social Perspectives of Games and Sports
10	Aquatics	Sports Injuries	Revision/ Feedback	Social Perspectives of Games and Sports
11		Sports Injuries		

Textiles and Design

	TASK 1	TASK 2	TASK 3	TASK 4	
Name of task	<i>Major Textiles Project – Designing and Planning</i>	<i>Contemporary Designer Case Study</i>	<i>Major Textiles Project – Development and Management</i>	<i>Trial HSC</i>	
Type of task	Written & Presentation	Written	Report	Exam	
Date of task	Term 4 Week 8	Term 1 Week 10	Term 2 Week 9	Term 3 Weeks 2-3	
Outcomes assessed	H1.3, H2.1, H6.1	H3.1, H3.2, H4.1, H5.1	H1.1, H1.2, H2.2, H3.1, H4.2	H1.3, 3.1, H3.2, H4.1, H5.2, H6.1	
Component					Weighting
Knowledge and understanding of textiles and the textile industry	10	10		30	50
Skills in design, manipulation, experimentation, analysis, manufacture and selection of textiles for specific end purposes using appropriate technologies	15	15	20		50
Total %	25	25	20	20	100

Course Calendar (120 Indicative Hours)

Week	Term 4	Term 1	Term 2	Term 3
1	<i>Introduction to HSC</i>	Major Textile Project	Properties and Performance of Textiles	Revision
2	Major Textile Project	Design	Properties and Performance of Textiles	Trial HSC Exams Task 4 30%
3	Design	Design	Properties and Performance of Textiles	
4	Design + MTP	Design	Properties and Performance of Textiles	HSC MTP DUE
5	Design + MTP	Design	Properties and Performance of Textiles	Properties and Performance of Textiles
6	Design + MTP	Properties and Performance of Textiles	Australian Textile, Clothing, Footwear and Allied Industries	Australian Textile, Clothing, Footwear and Allied Industries
7	Design + MTP	Properties and Performance of Textiles	Australian Textile, Clothing, Footwear and Allied Industries	Properties and Performance of Textiles
8	Task 1 Project Proposal 25%	Year 12 FOCUS WEEK	Australian Textile, Clothing, Footwear and Allied Industries	Australian Textile, Clothing, Footwear and Allied Industries
9	Design + MTP	Properties and Performance of Textiles	Australian Textile, Clothing, Footwear and Allied Industries	Revision
10	Australian Textile, Clothing, Footwear and Allied Industries	Task 2 25% Properties and Performance of Textiles	Task 3 MTP Report 20% Australian Textile, Clothing, Footwear and Allied Industries	Revision
11		Properties and Performance of Textiles		

Visual Arts

	TASK 1	TASK 2	TASK 3	TASK 4	
Name of task	Art Practice	Artworks beyond studio spaces	Body of Work	Trial HSC	
Type of task	Artmaking Presentation & related Written Response	Study of Art Research & In Class Essay	Artmaking Submission & Review	Exam	
Date of task	Term 4 Week 10	Term 2 Week 6	Term 3 Week 1	Term 3 Weeks 2-3	
Outcomes assessed	H1, H2, H3, H4, H7, H8, H9	H7, H8, H10	H1, H2, H3, H4, H5, H6	H7, H8, H9, H10	
Component					Weighting
Artmaking	20		30		50
Critical & Historical Study	10	20		20	50
Total %	30	20	30	20	100

Course Calendar (120 Indicative Hours)

Week	Term 4	Term 1	Term 2	Term 3
1	<i>Introduction to HSC Art</i>	Body of work Review	Case Study 4 Study of Art	Task 3 Artmaking Submission & Review 30%
2	Artmaking strategies, Study of Art	Case Study 2	Body of work development	Trial HSC Exams Task 4 20%
3	Artmaking strategies, Study of Art	Artmaking & Study of Art	Body of work development	
4	Artmaking strategies, Study of Art	Artmaking & Study of Art	Field Trip TBC	Body of work completion
5	Artmaking strategies	Artmaking & Study of Art	Body of work development	Body of work completion
6	Case Study 1 Artmaking strategies	Art Express Excursion	Task 2 In class essay 20%	Body of work review
7	Artmaking strategies Body of work Review & Commencement Plan	Case Study 3 Study of art	Body of work development, Study of Art	HSC NESA B.O.W. SUBMISSION & Art Breakfast Exhibition
8	Body of work Review & Commencement Plan	Year 12 FOCUS WEEK	Body of work development, Study of Art	Case Study 5
9	Body of work Review & Commencement Plan	Body of work development	Body of work development, Study of Art	Study of Art
10	Task 1 Body of Work Process, Presentation and Written Response 30%	Body of work development, Study of Art	Body of work development, Study of Art	Revision
11		Body of work development, Study of Art		

Visual Design

	TASK 1	TASK 2	TASK 3	TASK 4	
Name of task	<i>Character Design</i>	<i>Product Design</i>	<i>Major Project</i>	<i>Design Portfolio</i>	
Type of task	Practical and research	Practical and research	Individual Design Project	Individual Portfolio Review	
Date of task	Term 4 Week 10	Term 1 Week 10	Term 2 Week 10	Term 3 Week 7	
Outcomes assessed	DM1, DM2, DM3, DM4, DM5, DM6, CH1, CH2, CH3, CH4	DM1, DM2, DM3, DM4, DM5, DM6, CH1, CH2, CH3, CH4	DM1, DM3, DM4, DM5 & CH1, CH2	DM1, DM2, DM3, DM4, DM5, DM6	
Component					Weighting
Knowledge, skills & understanding through the making of works in design that lead to & demonstrate conceptual & technical accomplishment	15	15	20	20	70
Knowledge, skills & understanding that lead to increasingly accomplished critical & historical investigations of design	10	10	10		30
Total %	25	25	30	20	100

Course Calendar (120 Indicative Hours)

Week	Term 4	Term 1	Term 2	Term 3
1	<i>Introduction to HSC</i>	Project overview	Project overview	Curated Portfolio
2	Project overview	Adobe Tutorials	Project Brief	Trial HSC Exams
3	Adobe Illustrator tutorials	Adobe Tutorials	Research	
4	Working sketches	Adobe Tutorials	Ghent chart development	Curated Portfolio
5	Project Development	Storyboarding	Development of Brief	Curated Portfolio
6	Project Development	Animation	Project Development	Curated Portfolio
7	Project Development	Animation	Project Development	Task 4 Portfolio Submission 20%
8	Project Development	Year 12 FOCUS WEEK	Project Development	Curated Portfolio
9	Project Development	Animation	Project Development	Curated Portfolio
10	Task 1 Practical and Research 25%	Task 2 Practical and Research 25%	Task 3 Design Project 30%	Curated Portfolio
11		Animation		

Work Studies

	TASK 1	TASK 2	TASK 3	TASK 4	
Name of task	<i>Training Package</i>	<i>Personal Finance</i>	<i>Student Choice</i>	<i>Interview</i>	
Type of task	Own Choice	Test	Series of Activities	Complete an interview for a job	
Date of task	Term 4 Week 8	Term 1 Week 9	Term 2 Week 8	Term 3 Week 4	
Outcomes assessed	2, 5, 7	4, 5, 7, 8, 9	3, 4, 8, 9	1, 2, 3, 4, 5, 6, 7, 8, 9	
Component					Weighting
Knowledge and Understanding	15	5	5	5	30
Skills	10	20	20	20	70
Total %	25	25	25	25	100

Course Calendar (120 Indicative Hours)

Week	Term 4	Term 1	Term 2	Term 3
1	<i>Introduction to HSC</i>	Workplace Communication	Managing Life and Work Commitments	Preparing Job Applications
2	Workplace Communication	Personal Finance	Managing Life and Work Commitments	Trial HSC Exams
3	Workplace Communication	Personal Finance	Managing Life and Work Commitments	
4	Workplace Communication	Personal Finance	Managing Life and Work Commitments	
5	Workplace Communication	Personal Finance	Managing Life and Work Commitments	Task 4 Interview 25% Preparing Job Applications
6	Workplace Communication	Personal Finance	Team Enterprise	Preparing Job Applications
7	Workplace Communication	Personal Finance	Team Enterprise	Preparing Job Applications
8	Task 1 Activities 25%	Year 12 FOCUS WEEK	Task 3 Activities 25%	Preparing Job Applications
9	Workplace Communication	Task 2 Test 25% Personal Finance	Team Enterprise	Preparing Job Applications
10	Workplace Communication	Personal Finance	Team Enterprise	Preparing Job Applications
11		Personal Finance		

