



# WILLOW TREE PUBLIC SCHOOL

## NEWSLETTER



### Upcoming



- **Rugby League Blitz**  
7th March
- **NW Swimming**  
10th March
- **Gymnastics @ School**  
12th March
- **Gymnastics @ Tamworth**  
19th March
- **NO CANTEEN**  
19th March
- **Science & Engineering Challenge**  
20th March
- **Rugby Union Visit**  
21st March

### Principal's Corner

Welcome back to another exciting and jam packed school year. We are delighted to welcome our new Kindy students and their families. We are extremely impressed with how our students have settled back into their class routines and are 'aiming high' each and every day. We have a super busy term ahead with some amazing opportunities for students, please continue to monitor Sentral for information regarding events and please don't hesitate to contact the school with any questions. We look forward to working with you all throughout 2025.

### 2025 Staffing

Willow Tree Public School are proud to have a dedicated team of staff who go above and beyond for all students. Our team is committed to delivering a safe, fun and educational environment to all at Willow Tree Public School. We are proud to introduce our staff for 2025.

**Teaching Principal (Yrs 5/6)** - Jane McKenzie

**Ass. Principal Curriculum & Instruction** - Susan DeRoos (Alt Mon & Thurs)

**Classroom Teacher (Kinder)** - Kate Ramage

**Classroom Teacher (1/2)** - Sally Fitzpatrick

**Classroom Teacher (3/4)** - Belinda Ward & Kate Simson

**Classroom Teacher - Release** - Amy Schultz & Sandra Coffey (Fri)

**Aboriginal Education Officer** - Dayna Porter (Fri)

**Student Learning Support Officer** - Dave Cowan

**Business & School Administration Manager** - Kristy McCarthy

**School Administration Officer** - Jody Peatling (Mon & Wed)

**General Assistant** - Grant Batty

Thank you for your continued support and partnership in your child's education journey. Together, we can inspire greatness and empower our students to 'Aim High'



# WTPS - ACHIEVEMENTS

## Swimming

Our annual swimming carnival was held on Friday 14th February at Werris Creek Swimming Pool. It was fantastic to see so many students in attendance and giving it a go. We love the sportsmanship and encouragement our students display. As usual, competition was at an all time high with Waratah being the eventual house winner and of course the highlight of the day, the parent/student relay with ex students, Katie & Bella & Miss Porter claiming victory.. A big thank you to parents who assisted with timekeeping throughout the day. Congratulations to students who were awarded Champions & Runner-ups and special awards. From there we had a great number of students represent WPTS at Quirindi Zone PSSA swimming carnival. It was another day of great competition with many students claiming PB's. A big congratulations to Callie who was awarded Zone Junior Girl Champion and Harry who claimed Zone Junior Boy Runner-up. Good luck to Callie, Harry, Max, Charlie, Digby & Emily who have all been selected to represent Quirindi Zone at the North West Swimming Carnival in Armidale next Monday. We are excited to hear your results.





# WTPS - NEWS & NOTES

## Nut Aware School



### Nut Allergy Aware School

**We have Students at our school with life-threatening allergies to peanuts and tree nuts.**

**You can help our students stay safe by:**

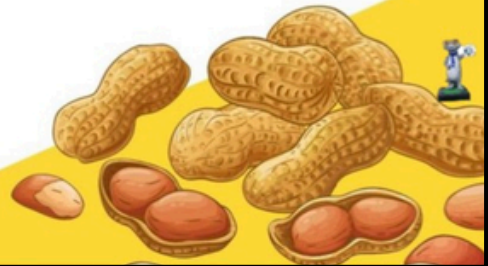
*Limiting food at school to safe foods*

*Not sharing food*

*Washing hands after snacks and meals*

**THANKYOU**

**For helping us provide a safe environment  
for our students with allergies!**



We are seeking our families support - we currently have student/s with severe allergies to nuts in our school. Anaphylaxis is a sever allergic reaction that is potentially life threatening. The most common causes of anaphylaxis in schools are allergies to food and insects (bees). To help manage allergies, our school is following the National Allergy Council's *Best Practice Guidelines for Anaphylaxis Prevention and Management in Schools*. The Best Practice Guidelines recommend an Allergy Aware approach and are asking that families assist us in supporting an Allergy Aware approach to school. Further information will be sent home to families.



# WTPS - NEWS & NOTES

## Gymnastics

We have been fortunate to secure a sporting for schools grant this term which has enabled us to engage qualified instructors from Tamworth Gymnastic Centre. Students have been participating in Gymnastics each Wednesday at school. They will travel to Tamworth on 19th March to consolidate all the skills they have been learning at the Tamworth Gymnastic Centre. Students will travel to and from Tamworth by Howards' Buses, accompanied by staff. Please ensure students are at school ready for a 9.10am departure. Please make sure students have snacks, lunch and plenty of water packed for the day.

## Rugby League Blitz

On Friday 7th March, NRL development officers will be coming to school to engage students in an NRL Blitz program. Students will take part in this throughout school time and is a fantastic opportunity for students to experience a new sport.

## Rugby Union Visit

Students will be fortunate to receive a visit from some Wallaby Classics on Friday 21st March at school. The classics will engage students in some skills and drills as well as merch signing. We are unsure who the classics will be at this stage.

## Science & Engineering Challenge

Year 5 & 6 students will be travelling to TRECC in Tamworth on Thursday 20th March to take part in a Science & Engineering Challenge. The day includes a competition and is designed to provide students with a positive experience of science & engineering. Students compete as a team of up to 30 students against other schools. The event is run by the University of Newcastle with the tasks being either hands on or critical thinking and problem solving. What a great experience for students. A huge thank you to Mrs Dunn and Mrs Ward who will be helping to transport students to and from the event.

## Year 6 Taster Day - QHS

Year 6 students have been invited to attend a 'Year 6 Taster Day' at Quirindi High School on Wednesday 19th March. Students will take part in specially designed lessons and experience a 'taste' in a day of high school life. This opportunity is open to all Year 6 students and we highly encourage you all to attend. Please see Sentral for further information regarding the day.

**"Education is the most powerful weapon which you can use to change the world" - Nelson Mandela**



# WTPS - NEWS & NOTES

## WTPS - Contact Info

**Phone** - 67471371

**Email** - willowtree-p.school@det.nsw.edu.au

Keep up to date with news and information through our school Facebook page



## Sentral

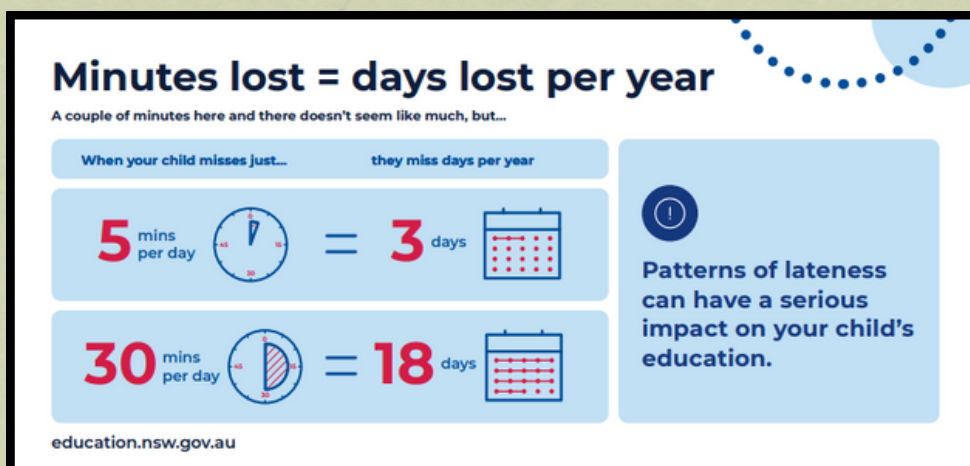
Sentral is the platform our school uses for communication, notes, attendance, reporting and finance. We encourage all families to make themselves familiar with Sentral to keep up to date with news and notes. Please note, once a due date has expired families will not be able to give permission or pay online. Parents will be required to come to the office to pay once expired.

## Student - Change of Routines

A reminder staff are on duty at school from 8.40am - 3.30pm each day. We remind families that students who do not catch a regular bus should not be dropped off prior to 8.30am and picked up prior to 3.30pm each day. Students should remain seated in the eating area until directed by a staff member. We understand things may change from time to time but ask that you let the office know if there is a change to your child's regular bus/pick up routine to avoid confusion. As you can appreciate, it is quite busy at the end of day. We appreciate your support with this matter

## Attendance Matters

Regular school attendance is crucial for students success and engagement in their learning process. Consistent participation in classes not only helps students in their every day learning but also encourages a sense of belonging within the school community. We encourage all families to ensure that students attend regularly, except when they are unwell or have a justified reason for absence.





# WTPS - P&C NEWS

Our P&C are one of the most valuable assets to our school. The committee work tirelessly to ensure ALL students have equal opportunities at Willow Tree Public School. We know that volunteering is a thankless task but, we are extremely grateful for everyone who contributes to our P&C.

## 2025 P&C Committee

A big thank you to the outgoing committee - we congratulate and welcome the 2025 P&C committee

**President** - Jules Dunn

**Vice President** - Belinda Ward

**2nd Vice President** - Sally Fitzpatrick

**Secretary** - Kirsty Gabler

**Treasurer** - Annabelle Musgrave

**General Committee** - Abbey Grace, Helen Saunders, Leah Meyer, Adam Dunn, Skye Trill, Lauren Austen, Beau Ward, Kelly Heath

Did you know? The P&C make huge financial contributions to our school each year, saving families over hundreds of \$ on subsidising opportunities for ALL students!



## Canteen

Our canteen is open each Wednesday for students to enjoy. Please ensure students orders are written clearly on a lunch bag and placed at the canteen prior to the start of school.

## NO CANTEEN - 19th March 2025

Due to students travelling to Tamworth for Gymnastics, there will be NO canteen on Wednesday 19th March



# COMMUNITY MESSAGES

## REGISTRATIONS OPEN FOR 2025

5 – 16yrs

Register now at  
Mysideline

Active Kids Vouchers  
accepted

\$150 per player

Boys & Girls

Includes player  
shorts and socks

**Enroll Now**



## QUIRINDI JUNIOR RUGBY LIONS



## BE PART OF THE TEAM!

COME TRY RUGBY!  
Thursday Nights at  
Quirindi Rugby Club,  
Werris Creek Road.

3rd April 6-7pm  
10th April 6-7pm

Contact us:  
[quirindijnrugby@outlook.com](mailto:quirindijnrugby@outlook.com)

## Tamworth Hockey

Presents



CALL US ON  
0412 593 739

## Primary & High School Comp

**FREE!!**

Comp runs Mondays

Primary School Comp: 5-6pm

High School Comp: 6-7pm

4 WEEKS start date Mon 17th March

SCHOOLS CAN REGISTER FULL TEAMS OR LISTS OF  
PLAYERS OR INDIVIDUALS CAN REGISTER THEMSELVES  
IF YOUR SCHOOL IS NOT PARTICIPATING

**frogs**

Fun and  
Development

send your registration to Julie at  
[play@tamworthhockey.com.au](mailto:play@tamworthhockey.com.au)

