

Religion and ethics

NSW public schools offer special religious education and special education in ethics, delivered by approved providers wherever available.

During enrolment, you can choose a special religious education option for your child from the school's available approved providers. You can withdraw your child from special religious education by selecting alternative meaningful activities, or special education in ethics if it's available.

You can update your preference by writing to the school or through the **online form** available at participating schools.

Visit the **department's website** for more information about religion and ethics.

At Strathfield South School, SRE is delivered on Wednesdays, Period 1 - 9.00-9.45 AM. Subject to change time in 2026.

On enrolment, parents/carers will be given the **SRE participation letter** to complete and return. After the initial enrolment, notification of changes to a student's enrolment in SRE or private study should be given in writing to the principal, either in a letter or using the above SRE participation letter template.

The following SRE classes are offered at Strathfield South High School:

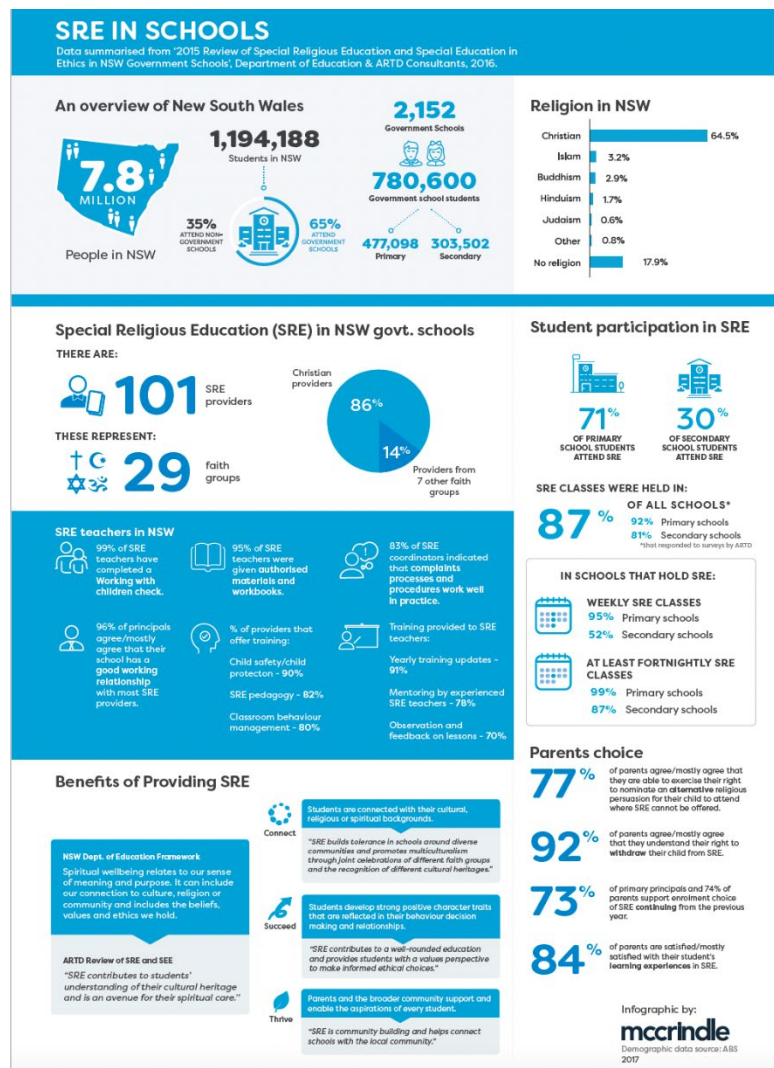
Option 1: Combined Christian

Christian SRE is education in Christian beliefs and practices for children of families from various Christian denominations and churches. Christian SRE teachers at this school are authorised and trained by the following approved SRE providers; **Anglican Diocese of Sydney, Australian Christian Churches, Baptist Union of NSW, Presbyterian Church of Australia (NSW)**. With teachers from St James Croydon, Lidcombe Anglican (Anglican Diocese of Sydney), Revive Petersham (Australian Christian Churches), Concord Baptist Church (Baptist Union of NSW), Cornerstone Concord (Presbyterian Church of Australia NSW) and Burwood Presbyterian Church.

The Christian **SRE curriculum** used in this school is produced by Christian Education Publications and is approved by each SRE provider. The curriculum explores the good news about Jesus Christ found in the Bible and the depth of God's love for people. Each lesson has been developed to be taught in an age-appropriate manner. Lessons include activities which make the lessons fun and inclusive for all students and give them the opportunity to critically explore and deepen their faith, pray, and reflect.

Research has shown that SRE contributes to students' wholistic education as it nurtures their spiritual wellbeing. For more information about the SRE curriculum

used in this school visit whysre.com.au



The NSW Department of Education (DOE) describes SRE "as an integral part of school activities." SRE can be seen then, as part of "a well-rounded education that values and supports the intellectual, creative, physical, social, spiritual and emotional development of each child."

Option 2: Islamic

Islamic scripture is the largest scale educational initiative in Australia which provides comprehensive education opportunities for Muslim children, equipping them with fundamental

Islamic life skills and knowledge.

Our ability to engage with students is an incredible privilege. Through educating, nurturing and supporting our students, we can truly make a world of difference in their lives, their communities and society as a whole.

Our dedicated team of volunteer teachers and curriculum writers are committed to creating engaging and insightful lessons that all students can benefit from.

Currently, our team of over 400 volunteer staff teach more than 26,500 students each week. This equates to nearly 400 Hours of Islamic learning in the school life of each child.

Our program uniquely caters for key learning stages in your child's school life. Throughout the years, students will cover everything from the basics of faith- such as the pillars of Iman and Islam, to morals and manners, Islamic celebrations,

prophets and role models as well as ethics and how to develop a positive sense of identity.

We believe these topics will set the foundations for life-long learning and a healthy Islamic outlook which will enable students to develop a stronger connection with their Creator, and hence a stronger connection with themselves, their school, their community and society as a whole.

If you do not wish your child to attend special religious education:

During the time that SRE classes are held, students not attending will be located in a separate space (classroom) and will participate in private study and revision (with their class teacher).

SEE is provided by Primary Ethics. For more information about SEE, including authorised curriculum scope and sequence, please visit [**Primary Ethics**](#).

Other activities of a religious nature

Our school has an open Christian lunchtime group every Friday, provided by the same group as the Combined Christian SRE. Contact the school to find out more information.