



# Singleton Heights Public School

## Newsletter

1-13 Dorsman Drive Singleton Heights 2330

Email: [singletonh-p.school@det.nsw.edu.au](mailto:singletonh-p.school@det.nsw.edu.au)

Phone: 65731363

### School Calendar

Week  
6

Date	Events
27/5/26	Netball Gala Day
28/5/26	PBL Parent Information Session 2pm
28/5/26	Primary Assembly 2:30pm
29/5/26	Playgroup 9:15am
4/6/26	Athletics Carnival
5/6/26	Playgroup 9:15am

### DATES COMING UP:

- Kinder Transition Information Sessions 2:30pm and 6pm Tuesday 9<sup>th</sup> June
- Star Struck Choir and Dance Dress Rehearsal 10<sup>h</sup> June

### Important message

**We ask that you please limit messages through our front office for students where possible so as not to interrupt class learning time. Change of plans for afternoon pick up arrangements only please.**

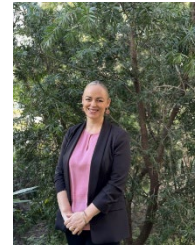
### Important Reminders

- Voluntary School Contributions are \$50 per student or \$75 per family.
- No teacher supervision before 8:40am so please don't send children too early.

### Principal's Report

#### School Administration Manager changes

Mrs Pam Watson is now on leave from the School Administration Manager position for the remainder of the year, from Friday, 15<sup>th</sup> May. Mrs Ruby Glover was offered the position last week and began her new work journey on Monday this week. Mrs Glover comes to the school having previously worked in the role of relieving SAO here for one day a week for a period of time in 2024. She had been working as a SAO at Singleton High School, before taking up the SAM position at SHPS, and has previously relieved as SAM in several small school environments. Mrs Glover is local to Singleton, having attended this school as a student. Please welcome her to our school community when you see her.



Mrs Watson has played a significant role in establishing an amazing school environment for our students at Singleton Heights Public School, for over 20 years. She has been integral in ensuring the school has been able to attract and retain high quality staff, both teaching and administration. She has successfully managed a team of administration staff year in and year out and been accountable for yearly budgets that have continued to deliver benefits and sustainable outcomes to the school community. Mrs Watson is the smiling face of the office, having overseen many a bump and bruise from students, as well as coordinating excursions, incursions and all the wonderful opportunities our students have in this school. The service delivery aspect of her role has ensured the wellbeing of our students, parents and staff always remains high! We wish Mrs Watson all the best in her time off for the remainder of the year.



### **Central Parent Portal App**

There have been reports from parents that sometimes notifications from this app are not going through to parents. If there are issues with your settings in the app, please delete the app, re-install it and check that your details, particularly your email address, are correct. Also check that you have your specific notifications turned on. If you require further help, please contact the office.

### **NSW Public Schools Parent Survey – link**

In Term 2, we are inviting parents and carers to participate in the NSW Public Schools Parent Survey. The survey gives you the opportunity to share your experience at our school, including communication, inclusion, wellbeing and how your child's learning is supported.

Hearing directly from our parents and carers will help us understand what's working well and where improvements can be made. Participation in the survey is optional, your responses are anonymous, and it takes around 10 to 15 minutes to complete. You can access the survey at [Survey Login](#)

### **Toys at school**

There has been a real increase in various toys that children bring to school from home. Some of these toys are provisioned from home to support the wellbeing of students, and I understand that. However, the majority of toys coming in are not necessary to have at school. Needoh-type squishy toys are a particular concern of mine, as, although the material is non-toxic, it can become unsafe and unnecessarily messy. The school cannot be responsible for the management and safety of the items being brought in from home. In the classroom, if you feel that your child needs to be supplied with a fidget toy, you need to have a conversation with the teacher about the need and necessity of these items coming in to the classroom. The decision to allow a child to have a fidget toy in the classroom needs to be consultative between the teacher and parent. Please contact the school to talk with me if you feel this needs clarification.

### **Year 1 Number Screening Check**

Over the past few weeks, our Year 1 teachers have been assessing students in the Year 1 Number Screening Check assessment. The Year 1 Number Screening Check is a short, one-to-one assessment focused on understanding a student's ability in number sense. Developing early number sense is a critical foundation for building later mathematical understanding and success.

The short, department-developed screener takes approximately 15 minutes and is administered by classroom teachers with each student individually.

Student responses are mapped to the NSW K-10 Mathematics Syllabus outcomes and indicators from the National Numeracy Learning Progression, with student information available in ALAN reports and in PLAN2 upon lodging the assessment.

The Year 1 Number Screening Check complements existing assessment practices to identify students' progress in developing foundational numeracy skills.

### **Starstruck rehearsals**

Our rehearsals for our dance group and choir group are well under way and this is a reminder that the students will be performing on Friday, 12<sup>th</sup> and Saturday, 13<sup>th</sup> June. There are a few more rehearsals coming up, with a Choir rehearsal on Friday, 5<sup>th</sup> June and a combined rehearsal on Wednesday, 10<sup>th</sup> June.



### **Soccer Gala Day**

Congratulations to both our girls' and boys' teams who defeated Singleton Public School in their Round 2 PSSA games on Monday, after a postponement from the previous week. Both teams progress through to the next round.



### **School Assemblies**

Our next few assembly dates are as follows:

Primary Assembly – Thursday, 28<sup>th</sup> May 2:30pm in the school hall

Infants' Assembly – Thursday, 11<sup>th</sup> June 2:30pm in the school hall

Primary Assembly – Thursday, 25<sup>th</sup> June 2:30pm in the school hall

NAIDOC Day Assembly – Tuesday, 30<sup>th</sup> June – Time TBA

### **External Validation Panel**

The external validation process supports excellence in NSW public schools. Each year schools must complete and submit the School Excellence Framework Self-assessment Survey (SEF S-aS). Once during the 4-year school excellence cycle, schools participate in an external validation of their self-assessment against each element. External validation drives an evidence-informed approach and provides assurance to the school and the system that the school is using the descriptors of quality practice, as outlined in the SEF, to guide their strategic priorities.

Schools engage in discussions with an external panel and have their self-assessments validated. External validation informs the development of a new School Excellence Plan.

Our executive team were involved in the External Validation panel last Friday and I am happy to share that the panel were able to ascertain the school's work and on balanced judgements against the School Excellence Framework and validate those judgements through the supporting evidence and rich panel discussion.



The panel convenor shared the following message: "It was a privilege to learn about the processes that are taking place at Singleton Heights PS, which demonstrate the expertise and strong commitment of staff. This can only occur through distributed leadership, a high expectations culture, collaborative practices and community strength, which is a credit to the entire team".

### Multicultural Perspectives Public Speaking

Congratulations to all our finalists in Stage 2 and Stage 3, who participated in the school finals on Wednesday this week. We have two representatives from our school in each of these stages, who will represent our school at Thornton PS on Thursday, 25<sup>th</sup> June.

Stage 2 winners – Emily T and Audrey M

Stage 3 winners – George L and Lilli-Anne T



### Principal for the day

I am looking forward to hosting Stevie L in Year 2 as Principal for the Day coming up on Friday of Week 6. Stevie was drawn from all students who received a Mari badge last term.



### Attending school

Attending school every day gives your child the best opportunity and access to a wide range of learning, wellbeing and social connections. Each day of school builds on what was learned the day before. Singleton Heights Public School is here to support you in getting your child ready and motivated for school every day.

When your child is absent, please inform the school via the Sentral Parent App, phone call or e-mail and provide a reason as soon as possible and definitely within 7 days. If you know your child will be absent in advance, please record this in the Sentral Parent Portal or notify us of this. This helps make sure we know where students are and can offer support for you and your family if needed. If your child will be absent for a period of more than 5 days due to travel, please contact our office to obtain an Application for Extended Leave - travel document which needs to be filled in and approved by the Principal before travel commences.

Thank you for your support in ensuring every school day matters.

Mr Graham  
Principal



Please join us for our

**KINDERGARTEN TRANSITION  
AND LITTLE JOEYS PARENT  
INFORMATION SESSION**

**TUESDAY 9TH  
JUNE**

**2:30 PM & 6PM**

**IN THE LIBRARY**

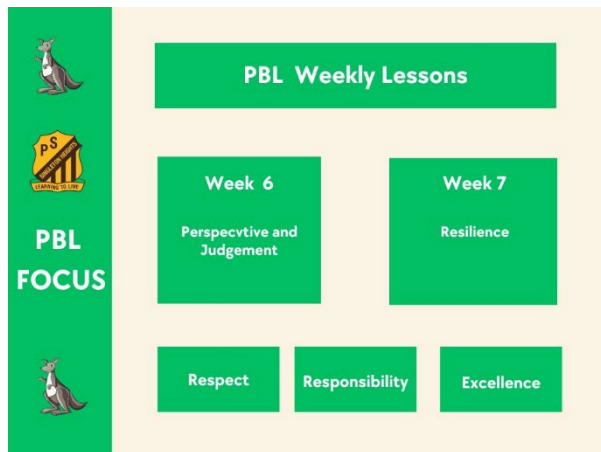
RESPECT



RESPONSIBILITY



EXCELLENCE



We would like you to join us for our

## PBL Parent Information Sessions

held in the hall before our Primary Assembly on

**Thursday 28<sup>th</sup> May at 2pm**

- We will be explaining Positive Behaviour for Learning PBL
- How the Mari Rewards accumulate to Badges
- Our PBL Matrix and PBL Home Matrix

## PBL Assembly Awards K-2

Class	Name
KM	Haylee M
KB	Rocky Mc
KS	Alfred B
KC	Blake W
1N	Payton S
1A	Sadie C
1F	Coralie G
2H	May S
2B	Logan W
2R	Archie T
2C	Jackson S

## Mari has spotted...

*Maddison T (KC)*  
Excellence – Always striving for Excellence

## Mari has spotted...

*Jag S (4S)*  
Responsibility – Always showing respect to staff and acting responsible.

# 4S HAVE BEEN BUSY IN SEMESTER 1



RESPECT



RESPONSIBILITY



EXCELLENCE

THANK YOU TO GARTH CRUMBLEY FOR MAKING A NEW SPRINKLER FOR OUR SCHOOL



Australia's  
**Biggest Morning Tea**

Every dollar raised helps support those impacted by cancer.

When: Saturday 23rd May 2026  
 Where: NAA Tearooms, Singleton Showground  
 Time: 10am - 12.30pm  
 Details: Hosted by The NAA Ladies Committee with Singleton CWA  
 Scrumptious Food - Excellent Raffles - and More  
 \$20pp - Payable at the door  
 Text 0427 775 236

Unique ID: 1003441792  
 Scan to Donate  
 QR Code  
 Unique ID: 1003441792  
 Cancer Council

**SRE News Corner**

This week in Scripture, K-1 classes heard a Bible story that focused on the core value of Compassion, as Jesus used his strength to help a man whose legs didn't work. Students thought about how they would feel if they were the man in the story, agreeing that we feel sad and frustrated when our bodies don't work properly, and that they would feel happy like the man did when Jesus helped his legs to work. Students had fun unjumbling pictures of the story and were able to retell the story in order of events.

After this, we sang a song with actions that required body movement, and then I closed in prayer, thanking God for our bodies, and for his compassion to help people.

Our Term Two memory verse is Matthew 11:28; Jesus said: "if you are tired and have heavy burdens, come to me and I will give you rest".

From Mrs Allison

  
**Roll up your sleeves, Singleton.**  
 Flex that community spirit and get ready to give blood.  
**8 - 9 June**  
  
 Look for the big red bus  
 Singleton Square  
 1 Gowrie Street, Singleton


 Book a donation ☎ 13 14 95

*Life IS THE REASON*