



# Singleton Heights Public School

## Newsletter

1-13 Dorsman Drive Singleton Heights 2330

Email: [singletonh-p.school@det.nsw.edu.au](mailto:singletonh-p.school@det.nsw.edu.au)

Phone: 65731363

### School Calendar

Week  
2

Date	Events
27/4/26	Public Holiday
29/4/26	Primary Assembly 2:30pm
1/5/26	Playgroup 9:15am

Week  
3

4/5/26	Star Struck Choir Rehearsal
8/5/26	Mother's Day Breakfast 8 am
8/5/26	Kindergarten Zoo Excursion

#### DATES COMING UP:

- 30<sup>th</sup> April - 1st May - BandLink
- 6<sup>th</sup> - 7<sup>th</sup> May - Year 1 & 2 Tocal Excursion
- Star struck Dance Rehearsal 12<sup>th</sup> May

### Important message

We ask that you please limit messages through our front office for students where possible so as not to interrupt class learning time. Change of plans for afternoon pick up arrangements only please.

### Important Reminders

- Voluntary School Contributions are \$50 per student or \$75 per family.
- No teacher supervision before 8:40am so please don't send children too early.

### Principal's Report

#### Welcome Back

I would like to extend a very warm welcome back to all our students and families. I trust you enjoyed the Easter break and the autumn holidays. Your children have settled back in nicely to the school routines and values, and it is a credit to you that you have them ready to learn from the outset. We have a few temporary changes to staff this term, particularly with maternity/paternity leave, with Mrs Linsley giving birth to a baby boy in the holidays, Mr Flitcroft welcoming a baby boy to his family and Mrs Olsen also giving birth to a baby boy on the last weekend of the holidays!

Mrs Bainbridge will be teaching 1F for the first five weeks of term while Mr Flitcroft helps care for his newborn boy. Miss Hassett will take over the role of Assistant Principal in Stage 2, while continuing to teach 4H. Mrs Ashbourne will be taking 4H on Mondays to cover Miss Hassett's executive release day.

There are many events on this week that I won't have had time to pre-empt with families, and they included our Anzac Service on Friday, Zone Cross Country on Friday, Boys Cricket Thursday (well done on your sportsmanship, boys, we had lovely comments from parents of the other team about your behaviour!) and Try High School Day for Year 6. Thank you for your patience with the short notice on these events, as we squeeze them in for the benefit of our students!

#### Anzac Services

Our school held the annual Anzac Service on our flagpole lawn today, at 10:45am. Thank you to the student leaders who stepped in to help out and coordinate the assembly and thank you to Mrs Lomax for organising this event. It is always a special tribute.

The local town Anzac March on Saturday, 25<sup>th</sup> April will begin on Ryan Avenue. SHPS students will be able to meet SHPS staff in the carpark on Ryan Avenue, behind the Cervoz café from 9:45am. The march will commence at 10:15am, proceeding along Hunter St, to Burdekin Park. Students will be seated together, once we arrive at



Burdekin Park and can be collected from there by parents and carers.



The mid-morning service starts at 11am. Students will be required to wear full school uniform, including bucket hat.

### Attendance

60 students achieved 100% attendance in Term 1, which is an amazing achievement and something to be proud of. Our overall attendance for the Term was 91.7%. We also had 70% of our student cohort attending 90% or more for the term (40+ of the 44 school days).

### NSW PS surveys for students and parents

Very soon this term, the school will be conducting surveys for students to capture insights about their experiences at school. The survey covers a range of topics, including student engagement, learning experiences and wellbeing at school, and is one way that students can have a voice in their education. Survey results provide schools with actionable data to drive school planning, reporting and excellence, helping to identify strengths and areas for improvement.

Our schools will conduct this survey in the middle of this term.

The Parent Survey will provide our school with valuable insights from parents and carers about their experiences with their child's school, and of their child's learning at home. The survey covers a range of topics, including communication, inclusion, wellbeing, and how the school supports learning and positive behaviour. Survey results provide schools with actionable data to drive school planning, reporting and excellence, helping to identify strengths and areas for improvement.

### Healthy Harold

Our K-4 classes have been enjoying the Life Education van and Healthy Harold lessons this week, and many of our classes will also be participating next Tuesday and Wednesday in the Life Ed van. Thank you for supporting this wonderful opportunity for our students.

### Year 6 Try High School Day

Our Year 6 Students have travelled by bus to the High School today, to participate in a full day of 'Try High School'. We hope they have had a wonderful day!

### From our Aboriginal Education Student Team

As your student AET leaders, we are excited to share what is happening in Term 2. The Wonnarua language program is growing and will be shared in primary classrooms on Mondays, as well as continuing in Kindergarten rooms. On Mondays, come along to the kindergarten area to play Aboriginal games led by Aboriginal student leaders. On Wednesdays, express yourself in the Aboriginal Art Club. These activities are open to everyone—so join in, learn, and celebrate culture as we move towards NAIDOC Week at the end of term. Don't miss out—be part of sharing and enjoying Aboriginal culture at our school! - Nixon, Rubi, Isla and Georgia-Rose (AET leaders 2026).

### Primary Assembly and other dates

Our first Primary Assembly for Term 2 will be held on Wednesday, 29<sup>th</sup> April, from 2:30pm in the school hall. This change is necessary due to the hosting of our BandLink program on Thursday and Friday next week.



Future Assembly Dates:

Infants Assembly – Thursday, 14<sup>th</sup> May 2:30pm

Primary Assembly – Thursday, 28<sup>th</sup> May – 2:30pm

Infants Assembly – Thursday, 11<sup>th</sup> June – 2:30pm

Primary Assembly – Thursday 25<sup>th</sup> June -2:30pm

These times are subject to change, and community will be notified of these changes via our communication platforms.

### **BandLink**

The school will be hosting several schools next Thursday and Friday for the BandLink program. This program is a 2-day workshop for public school students in Years 4 to 8 who play a woodwind, brass, string or percussion instrument. The workshops are led by professional tutors and bring specialised skills to country NSW public school students, which culminate in a concert at the end of the workshop. Students will have been learning their instrument for a minimum of one year, unless otherwise specified by their music teacher. We look forward to hosting and being an audience for the concert at the end of the day on Friday.

### **Stage 1 (Year 1 and 2) Tocal excursion**

As part of the Stage 1 History unit, “How communication has changed over time”, Stage 1 will be visiting Tocal House during Week 3 of Term 2. The excursion has been planned to provide the children with an opportunity to see a working farm and to enhance their understanding about how people lived in the past.

Children in 2C,1A, 2H and 1N will be attending on Wednesday 6<sup>th</sup> of May 2026.

Children in 2B, K-6E, 1F and 2R will be attending on Thursday 7<sup>th</sup> of May 2026.

### **Kinder Zoo excursion**

Our Kindergarten students will be travelling to the Hunter Valley Wildlife Park on Friday, 8<sup>th</sup> May.

### **Mother's Day Breakfast and Stall**

The school will be hosting a Mother's Day Breakfast on Friday, 8<sup>th</sup> May, from 8am in our canteen area and front lawn. We will cook and serve Bacon and Egg sandwiches to our families for a gold coin donation, to celebrate all the mothers, grandmothers and mother figures in our school community. Come along and enjoy this lovely community event.

Our P&C will hold a Mother's Day Stall on Tuesday, 5<sup>th</sup> May. Students can purchase a gift at their allocated time. If students would like to purchase an additional gift, they can do so at Break1.

Mr Graham  
Principal



PLEASE JOIN US FOR OUR

# Mother's Day

## BBQ BREAKFAST

Gold Coin Donation

### 8am Friday, 8th May

**BACON AND EGG SANDWICHES**  
**COMPLIMENTARY TEA AND COFFEE**

COFFEE VAN ONSITE TO  
PURCHASE HOT DRINKS

MUSIC PERFORMANCES  
CRAFT ACTIVITIES



Singleton Heights  
Public School

PS  
ASSOCIATION

# Mother's Day

## Stall

TUESDAY  
5<sup>TH</sup> MAY

Gifts range from

**\$1 - \$10**

1 gift per student.

Another gift can be purchased at Break 1 (after ensuring every student has purchased a gift)



RESPECT



RESPONSIBILITY



EXCELLENCE

## PBL Assembly Awards K-2



Class	Name
KM	Larinda K
KB	Elijah M
KC	Maddison T
KS	Camila M
1A	Lily W
1F	Rylie H
1N	Camila M
2B	Stevie L
2C	Phoebe G
2H	George G
2R	Marlia S

**PBL Weekly Lessons**

**Week 2**  
 How can we use our strengths

**Week 3**  
 Identifying Emotions

Respect

Responsibility

Excellence

**PBL FOCUS**

# UNIFORM SHOP

The uniform shop will opening on

**Wednesdays from 2:45pm - 3:15pm**  
**Fridays from 8:45am -9:15am**

Flexischools orders will be filed once a week and sent home with students.

Please remember that the shop is run by volunteers giving up their own time to help out - Be Kind.

## Mari has spotted...

*Odin M (K6E)*  
 Responsibility – Showing responsible behaviour in the playground.

## Mari has spotted...

*Wyatt R-O (5B)*  
 Responsibility – Being a responsible library monitor and doing his duties well.

RESPECT



RESPONSIBILITY



EXCELLENCE

# 2R



In 2R we are learning to identify similarities and differences between imaginative and informative texts and researching true facts about the Great White Shark.

Facts we have found:

- Great white sharks can be found throughout the world's oceans,.
- Great White Sharks have 300 sharp, triangular teeth arranged in up to seven rows.
- Our art work displays those teeth!





# ANZAC DAY MARCH

## 25TH APRIL

- **9:45 am** – Participants assemble at Ryan Ave, SHPS students are to meet in the carpark on Ryan Avenue behind Cervoz cafe. Staff will be there to greet students.
- **10.15 am** – The march commences, proceeding along Hunter Street to Burdekin Park. Upon arrival at Burdekin Park, students will be seated together in a group but can be collected from this point by carers.
- **11.00 am** – Mid-Morning Service at Burdekin Park – schools will be called up to lay a wreath.

Students are required to wear full school uniform, including school hat  
Children are encouraged to march with their school or veteran/ serving parent.  
If they wear medals these should be worn on the **right-hand** side



### YOUTH VENUE | TERM 2

## DROP IN | 3-6PM

#### Tuesdays

- Card and Gift Tag Making

#### Wednesdays | Computer free day

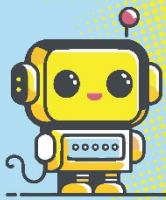
- Dungeons & Dragons
- Lego Challenges

#### Thursdays

- Friendship Bracelets

#### Fridays

- Tag Games
- Warm Snacks



## ROBO GALS

### YOUTH CODING WORKSHOP

With the University of Newcastle's SMART team



**Thursday 7 May | 3.30 - 5.30pm**  
**Singleton Public Library**

Have you wanted to try coding?  
This workshop is for you!

With expert guidance from the University of Newcastle's SMART team, participants will use LEGO® EV3 robots to learn the basics of block coding, to program it and complete a series of fun challenges! By the end of the workshop, they will have the confidence and skills to explore other popular coding programs available online or at school.

**For ages 10 - 12.** This is a beginner's program for girls with limited previous coding or robotics experience. If your child is already confident with coding, this program may not be suitable for them.

Bookings  
Essential



Scan the QR code to  
get your free ticket!

[w singleton.nsw.gov.au/Library](http://w.singleton.nsw.gov.au/Library)



Jerrys Plains Public School P&C

# Christmas IN JULY Fete

10am - 2pm

Market Stalls

Gold Coin Entry

Sunday 26th July 2026

Doyle Street, Jerrys Plains NSW 2330

FREE Childrens Entertainment

Food Vendors

All proceeds from front gate & P&C stall will be going towards needs for our small school

RESPECT



RESPONSIBILITY



EXCELLENCE

Singleton Heights  
Public School



# CANTEEN MENU

AUTUMN/WINTER

## BIRTHDAY BUCKETS

**Birthday buckets are now**

**available to order on**

**flexischools**

Each bucket will contain a  
Quelch stick per child in the  
class, 2 x \$1 canteen vouchers  
and a balloon to keep.

Prices will differ per class  
numbers.

## FLEXISCHOOLS

**Order in advance to avoid  
system glitches &  
disappointment**

Especially on a Friday when  
orders can exceed 1000 per  
minute server wide!

## GOING HOME EARLY

Please alert the canteen before  
9am if you wish to cancel your  
order

**Apologies, but No refunds** will  
be given if orders are placed  
and not collected



## HOT FOOD

- Garlic Bread **\$2.00**
- Small Sausage Roll **\$3.00**
- Beef Pie **\$5.00**
- Chicken Nuggets **\$5.50**
- Gluten Free Chicken Nuggets **\$5.50**
- Mac & Cheese (GFH) **\$6.00**
- Beef Lasagne **\$6.00**
- Twista Bolognese (GFH) **\$6.00**
- Sweet chilli chicken wrap **\$6.50**
- Sauce - Tomato, BBQ, Sweet & Sour **50c**

## BURGERS

- Cheeseburger **\$6.50**
- Chicken Burger **\$6.50**
- Gluten Free Chicken Burger **\$7.00**

**Change Sauce over Counter Only  
BBQ, Tomato or Mayo**

## SANDWICHES

- Cheese **\$4.00**
- Cheese & tomato **\$4.50**
- Ham & cheese **\$5.00**
- Egg & lettuce **\$5.00**
- Salad **\$5.50**
- Chicken, lettuce & mayo **\$6.00**
- Ham & salad **\$6.00**
- Chicken & salad **\$6.50**

**All options available in wraps for 50c extra**

## SALADS

- Rainbow Salad **\$6.50**
- Lettuce, tomato, carrot, cucumber,  
pineapple, beetroot, cheese
- Add a protein
- Ham, Egg or Tuna  
Chicken
- Add a dressing
- Italian, ranch or mayo
- \$1.00**  
**\$2.00**  
**50c**

## TOASTIES

- Cheese **\$4.50**
- Ham & Cheese **\$5.00**
- Chicken & Cheese **\$5.50**

## BREAK 1

A selection of fresh homemade items, these will  
differ daily.

- Popcorn, Fresh Fruit Cup, Pikelet, Bliss Ball **50c**
- Jaffle, Quesadillas, Dip & Veggie Sticks, **\$1.00**  
Cheese & Crackers, Whole Piece of Fresh  
Fruit
- Mini Pizza, Custard Cup, Grainwaves, Red **\$1.50**  
Rock Deli Chips, mini meatball sub, Yoghurt
- Hot Chocolate, Milkshakes (choc), Chicken **\$2.00**  
Fingers
- Fruit Smoothie (Assorted) **\$2.50**
- Mimi Nacho Bowl **\$3.00**

## BREAK 2

- Frozen Fruit Slices **50c**
- Quelch Sticks **\$1.00**
- Snap Stick **\$1.00**
- Pineapple/Tutti Frutti/Grape/Watermelon/Ka-Bluey **\$1.50**
- Juicies
- Tropical/Wildberry
- Ice Monys **\$1.50**
- Sour Red Raspberry/Ka-Bluey/Watermelon **\$2.00**
- Choc Mooseie

## DRINKS

- 350ml Water **\$1.00**
- 600ml Water **\$2.00**
- Flavoured Milk **\$2.50**  
Chocolate/Strawberry
- Juice Bomb **\$2.50**  
Watermelon/Grape/Apple/Blueberry
- Glee
- Tropical/Raspberry
- Up & Go
- Chocolate/Strawberry **\$2.50**
- Juice Popper **\$2.50**
- Punch/Apple/Orange **\$2.50**

