



YEAR 11
ASSESSMENT AND
REPORTING PROCEDURES
2025



PENNANT HILLS HIGH SCHOOL

LAURENCE STREET, PENNANT HILLS, NSW, 2120

PHONE: 9473 5000

EMAIL: PENNANTHIL-H.SCHOOL@DET.NSW.EDU.AU

Contents

PRINCIPAL'S MESSAGE	4
YEAR 11 ASSESSMENT PROCEDURES	5
RESPONSIBILITY	5
The purpose of assessment.....	5
How will assessment be undertaken?	6
Students Online	6
Information to be provided to students	7
Rights and responsibilities in Year 11 assessment	7
Criteria for satisfactory completion of a course.....	8
Completion of assessment tasks	8
Attendance before a task is due.....	8
Requesting an extension of time for an assessment task.....	9
Tasks submitted late	9
Absence from an assessment task / examination – illness / misadventure	9
Absence from a task / examination – factors known in advance	10
The N-Award process.....	13
INTEGRITY	16
HSC All My Own Work.....	16
What is malpractice in Stage 6 Assessment.....	16
What is a breach of assessment conditions?	17
How to avoid malpractice?.....	17
Consequences of malpractice?	18
Mobile phones and electronic equipment	19
Disputing an assessment mark.....	19
Record of marks.....	19
Notification of tasks	19
Assessment Protocols	20
Examination rules	20
Assessment Task Notification	22
ACHIEVEMENT	23
Steps to manage your assessment tasks	23
General comments on assessment	23
Looking ahead to the Higher School Certificate	24

HSC Disability Provisions	25
ABORIGINAL STUDIES (ACCELERATED) Year 12	26
AGRICULTURE	28
ANCIENT HISTORY	29
BIOLOGY	30
BUSINESS STUDIES.....	31
CHEMISTRY.....	32
CHINESE BEGINNERS	33
CHINESE CONTINUERS	34
COMMUNITY AND FAMILY STUDIES.....	36
DRAMA.....	37
ECONOMICS.....	39
ENGINEERING STUDIES.....	40
ENGLISH ADVANCED.....	41
ENGLISH AS AN ADDITIONAL LANGUAGE OR DIALECT (EAL/D)	42
ENGLISH EXTENSION.....	43
ENGLISH STANDARD	44
ENGLISH STUDIES.....	45
ENTERPRISE COMPUTING	46
FOOD TECHNOLOGY	47
GEOGRAPHY.....	48
HEALTH AND MOVEMENT STUDIES	49
HOSPITALITY - KITCHEN OPERATIONS AND COOKERY	50
VET - Certificate II in Cookery Assessment Schedule.....	50
INDUSTRIAL TECHNOLOGY	51
JAPANESE BEGINNERS	52
JAPANESE CONTINUERS.....	54
LEGAL STUDIES.....	56
MATHEMATICS ADVANCED	57
MATHEMATICS EXTENSION 1	58
MATHEMATICS STANDARD.....	59
MODERN HISTORY.....	60
MUSIC 1	61
MUSIC 2	62
PHYSICS.....	63

SOCIETY AND CULTURE	64
SOFTWARE ENGINEERING	65
SPORT, LIFESTYLE AND RECREATION STUDIES.....	66
TEXTILES AND DESIGN.....	67
VISUAL ARTS.....	68



PRINCIPAL'S MESSAGE

I am sure you will find the senior years to be both a challenging and exciting time in your schooling. You will have the opportunity to build upon the skills you developed in the junior school, as you strive to achieve your best educational results over the next two years of intense academic study. It is expected that you will further develop your organisational and leadership skills as you engage in a range of sporting, cultural and other school experiences.

Before you begin your senior study, it is important to realise that there will be greater expectations of you than in Years 7 – 10. Not only will you be expected to be an excellent role model for other students by being a good school citizen, but there will be a range of other school requirements that we will expect you to meet. Naturally, all teachers will have the basic expectation that you will try as hard as you can in class at all times and complete all homework. The NSW Educational Standards Authority (NESA), as the body that controls your Year 11 and 12 studies, will expect you to abide by all of its policies and procedures.

One of the most important areas requiring your full attention is the completion of assessment tasks in each of your courses. Whilst the assessment tasks are compulsory and will require a great deal of effort on your part, they are also a valuable means by which you will obtain feedback on your performance as you work towards the HSC examinations. You should remember that in the Year 11 course, the assessment tasks (including the Yearly Examinations) constitute 100% of your final mark in each course; as such, they provide you with the opportunity to gain marks by working consistently over the duration of the course. Similarly, this will be the case in Year 12.

The following pages in this book give details about the specific assessment requirements in each senior course. You will need to study these carefully so that you meet the requirements of both the school and NESA. We look forward to w

The following pages in this book give details about the specific assessment requirements in each HSC course. You will need to study these carefully so that you will meet the requirements of both the school and of NESA.

We look forward to working with you as you progress towards the Higher School Certificate.

R Warren
Principal

YEAR 11 ASSESSMENT PROCEDURES

These notes have been prepared to assist you in understanding the procedures used in arriving at assessment marks for Year 11 courses.

The school's policy aims to provide **a fair system for all students**.

It has been designed to:

- assist students who would otherwise be disadvantaged by illness or misadventure
- ensure that students cannot gain special consideration where this is not warranted
- ensure that all appeals are dealt with fairly and consistently
- promote and protect the best interests of all students.

RESPONSIBILITY

The purpose of assessment

Assessment is the broad name for the collection and evaluation of evidence of a student's learning. It is integral to teaching and learning and has multiple purposes. Assessment can enhance student engagement and motivation, particularly when it incorporates interaction with teachers, other students and a range of resources.

Assessment is designed to provide information on student achievement and progress in each course in relation to syllabus standards, and to report on the standard of performance attained at the end of the course.

The Stage 6 course, both Years 11 and 12, requires a standards-referenced approach to assessment and reporting. A standards-referenced approach means that the achievements of students are assessed and reported against specified standards that are established for each course. Students are no longer assessed by comparing their achievements with other students, but against the standards that are specified in each syllabus.

These **standards** are established through:

- Knowledge, skills and understandings expected to be learnt by students as a result

of studying the course

- the standard set out in the syllabus
- the levels of achievement reached by the students against the 6 performance bands of the syllabus.

Together, these specify what is to be learnt and how well it is achieved.

Assessment measures performance throughout the whole course. In each course, every course outcome will be measured at least once. **Students must satisfy the assessment requirements for Year 11 before commencing Year 12.**

Year 11 courses satisfactorily completed appear on the Year 11 Record of School Achievement (ROSA).

How will assessment be undertaken?

The NSW Education Standards Authority (NESA) has provided a range of documents for each NESA course. These documents include a syllabus, assessment and reporting supplement, sample assessment tasks and sample examination papers. The assessment program for each subject is devised using these documents. The documents are available on the NESA website and should be consulted by students:

<http://educationstandards.nsw.edu.au/wps/portal/nesa/home>

The syllabus contains a statement of outcomes for each course. At some point during the assessment program, every one of the outcomes must be assessed.

Each syllabus lists components that must be followed by all schools, although schools will differ in how they assess the components.

Each course will require a different number of assessment tasks to adequately assess the course. NESA encourages teachers to assess student progress and achievement so that students will not be completely overwhelmed by assessment tasks. This will usually mean that students will undertake no more than 3 assessment tasks for each subject during the Year 11 course.

Students Online

Student's Online is your source for information about your study from Year 10 to the HSC.

<https://studentsonline.nesa.nsw.edu.au/>

All students should log into Students Online. You should check your confirmation of entry and ensure your name, courses, address, email and mobile phone number are all correct.

You can change your address, email and phone number in the personal details section.

You can download your free PDF credentials in the Results Services section.

You can find helpful information in My Account under Manuals and Guides.

It is the responsibility of each student to ensure all information contained on Students Online is kept up-to-date and must inform the Head Teacher Secondary Studies of any name changes or course concerns.

Information to be provided to students

Each school has the responsibility to tell students the following information:

- What aspects of the course will be assessed, including the relevant syllabus outcomes
- How they will be assessed, e.g. essays, tests, practical tasks etc.
- The relative value of the tasks
- When they are going to be assessed.

This information will be provided in writing. Your class teacher will provide details of each assessment task at least **two weeks** before the date that the task is due.

During the Year 11 course you will be provided with information about your performance in specific tasks. However, your final rank will not be provided until you complete your final Year 11 examinations in September 2025.

Rights and responsibilities in Year 11 assessment

You have the right to:

- be informed of the assessment policies of your school and NESAs.
- receive clear guidelines relating to the requirements of each assessment task. These will be issued to you in hard copy at least two weeks before the task due date. The template of the Pennant Hills High School Assessment Task Notification Sheet is provided on page 22.
- be told in advance of the due date for each assessment task.
- query the mark for an individual task at the time it is returned to you.

You have the responsibility to:

- become familiar with and follow the assessment requirements set by the school
- monitor upcoming tasks by reference to this booklet, and the Term Assessment Planners, issued at the beginning of each term
- complete all set tasks on time or talk to your teacher about what is required if you cannot meet a deadline

- complete all NESA All My Own Work modules as a pre-requisite before entry into the Year 11 course. This is completed in Term 4 of Year 10 at Pennant Hills High School
- avoid behaviour which could be considered cheating, including plagiarism, and ensure that all assessment work is your own or acknowledges the contribution of others
- follow up any concerns you have with tasks at the time they are returned to you.

Criteria for satisfactory completion of a course

A student is considered to have satisfactorily completed a course if, in the Principal's view, there is sufficient evidence that the student has:

- followed the course developed or endorsed by NESA
- applied themselves with diligence and sustained effort to the set tasks and experiences provided in the course by the school
- achieved some or all of the course outcomes.

NESA does not set a minimum attendance for the satisfactory completion of a course. The Principal may determine that, as a result of absence, the above course completion criteria might not be met.

Clearly, such absences are serious and principals must give students early written warning of the consequences of non-completion of course requirements. The warning must relate the student's absence to the non-completion of the course requirements.

Completion of assessment tasks

Students must complete all assessment tasks.

Where a student has been given zero marks because of failure to complete assessment tasks totalling more than 50% of the final course assessment mark, the Principal must certify that the course has not been studied satisfactorily, and the student will not qualify for a Record of Student Achievement (ROSA) grade in that subject.

This could also mean that a student becomes ineligible to proceed to the Year 12 course.

Attendance before a task is due

Missing lessons for all or part of a school day in order to prepare for a task is malpractice.

When a student deliberately misses lessons (including carnivals) in order to gain an advantage in a task, the Principal may decide to apply a penalty commensurate with the total time missed.

Where a pattern of absence before a task is evident, the Principal may request that a medical certificate be produced in order to avoid a penalty. Each case will be treated individually. If it is evident that malpractice has occurred, a penalty will result.

Requesting an extension of time for an assessment task

Any request for extensions due to exceptional circumstances must be addressed to the relevant Head Teacher for consideration in writing **BEFORE** the due date.

Any extension will only be granted in exceptional circumstances and must be discussed with the relevant Head Teacher.

Tasks submitted late

Tasks submitted **late** without approved extension of time from the relevant Head Teacher will incur a mark of **zero** – that is **100%** of total marks.

Late tasks must still be completed and submitted in order to meet course outcomes.

Failure of ICT is **NOT** an acceptable excuse. Students should develop a pattern of regularly backing up work on an internet-based or transportable storage device that can be brought to school in the event of any ICT failure, e.g. printer out of ink, USB failure. **Do not rely** on being able to access school ICT facilities on the task due date.

In the case of illness or misadventure a medical certificate and/or misadventure form with supporting document/s must be submitted to avoid penalty.

This must be given to the Head Teacher of the relevant subject on the **FIRST** day of return to school, irrespective of whether the student has a timetabled period in that subject that day. The task must be submitted / attempted as soon as the medical certificate expires.

An 'N' award warning letter will be issued if the above processes are not followed.

For all types of sickness, **a medical certificate will be required**. Lateness beyond the approved number of days as specified on the medical certificate, or lateness for which a student does not seek approval before the due date, will lead to a **zero** result for the task.

Absence from an assessment task / examination – illness / misadventure

In the case of illness or misadventure the following must be submitted to avoid penalty:

- a medical certificate **and/or**
- misadventure form with supporting document/s

Illness/Misadventure forms are available from the Deputy Principal or relevant Head Teacher.

A sample Illness/misadventure form is provided on page 12.

When students are absent on the day of a formal assessment, they must submit a medical certificate on the first day of their return to school. Students must return to school the day after the medical certificate expires. This documentation is required immediately on the first day that the student returns to school and is to be given to the Head Teacher of that subject, irrespective of whether the student has a timetabled period in that subject that day. A note from a parent/caregiver is **NOT** sufficient documentary evidence.

Failure to provide documentary evidence (i.e. a medical certificate) may result in a zero mark for that task

Additionally, in Year 11, the student or parent must phone the school as soon as they are aware that they will be unable to attend the examination and speak to or leave a message for the relevant Head Teacher. **This does not replace the need for a medical certificate.**

Examinations/Orals/Practical and Other Similar Tasks: students must be prepared to complete the task on the first day of return to school. **Students are advised that no adjustment of assessment marks is possible.** NESA mandates that actual performance, not potential performance, is to be assessed. **If you are sick and have a medical certificate covering the period of the task, you are advised to stay at home and attempt the task upon your return to school.**

The Head Teacher of the subject concerned:

- will allow you to undertake the same task *or*
- will allow you to undertake a suitable replacement task *or*
- will give an extension for the task

In exceptional circumstances, an estimate for that task only, may be considered by the Principal.

Absence from a task / examination – factors known in advance

When a task is missed because a student is required by the school or some other organisation to attend some important function, the date of which cannot be altered, the alternatives listed above for a task missed through illness will apply. An example might be a Regional final in sport, the date of which cannot be predicted, which may clash with the advertised dates for an assessment task. This rule does not apply to private arrangements made by parents, such as holidays in school time and the like.

Students absent when a task is handed out CANNOT request or be granted an extension on the basis of that absence. Note that this includes absence due to TAFE commitments, sporting events or any other school-endorsed activity. It is your responsibility to request any task notification sheets from your teacher upon your return.

Any **appeal** should be lodged within **two (2) school days** of the student receiving their mark. Appeals must be resolved within ten (10) school days. Appeals will be considered by the Assessment Review Panel, consisting of the relevant Deputy Principal and Head Teacher Secondary Studies.

Illness/Misadventure Form



Pennant Hills High School

Task Missed Due to Illness/Misadventure

Please submit this form and supporting documentation to the Head Teacher of the relevant subject.

Student

Name:

Course:

Class teacher:

TASK DETAILS

Task

Number: **Title:**

Weighting: **Due Date:**

Details of Illness/Misadventure/Absence

Date/s of Absences: to

Reason for Absence

.....
.....
.....

Supporting Documentation Attached? YES / NO

Type of Documentation:

Student Signature: **Date:**

Head Teacher Recommendation

☐ **Upheld** New Due Date:

☐ **Declined** Reason for refusal:

Head Teacher Name:

Head Teacher Signature: **Date:**

The N-Award process

Students studying a Stage 6 course must make a genuine attempt to complete course requirements. These requirements include students applying themselves with diligence and sustained effort to the set tasks and experiences provided in the course by the school, regardless of whether or not these tasks contribute to the final assessment mark. It is a matter for the teacher's professional judgement to determine whether a student has made a genuine attempt to complete these requirements.

A student will be considered to have satisfactorily completed a course if, in the Principal's view, there is sufficient evidence that the student has:

- Followed the course developed or endorsed by NESA;
- Applied himself/herself with diligence and sustained effort to the set tasks and experiences provided in the course by the school;
- Achieved some or all of the course outcomes.

An official NESA N-Award Warning letter will be sent to the parents of any student who is **in danger of not satisfactorily completing a course** or who **fails to complete an assessment task**.

A student who does not make a serious attempt at a task may not receive marks for the course concerned. This may render a student ineligible for the award of the Higher School Certificate.

Non-serious attempts include but are not limited to:

- frivolous or objectionable material
- students who provide answers to examination questions in a language other than English (unless specifically instructed to do so)
- where only multiple-choice questions are attempted.

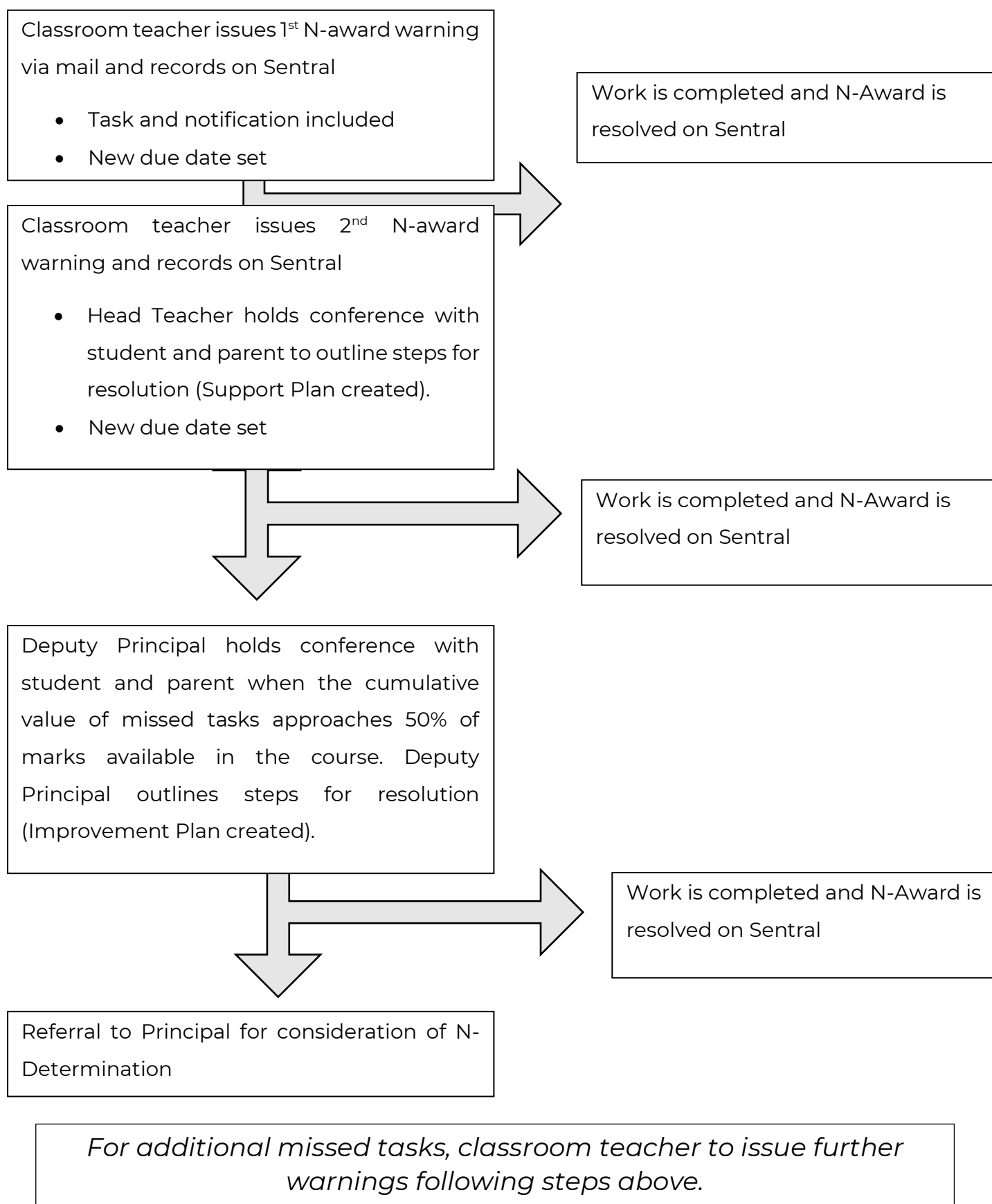
NESA requires two warnings for a student in order for an 'N' Determination to be made by the Principal at the end of a course.

NESA N-Award Warning letters are NOT a punitive instrument. If the work requested for completion is completed, they are nullified. In accordance with NESA policy, and in terms of natural justice, the school will provide students with the opportunity to fairly redeem the situation with time enough to enable correction of the concern or submission of outstanding work products.

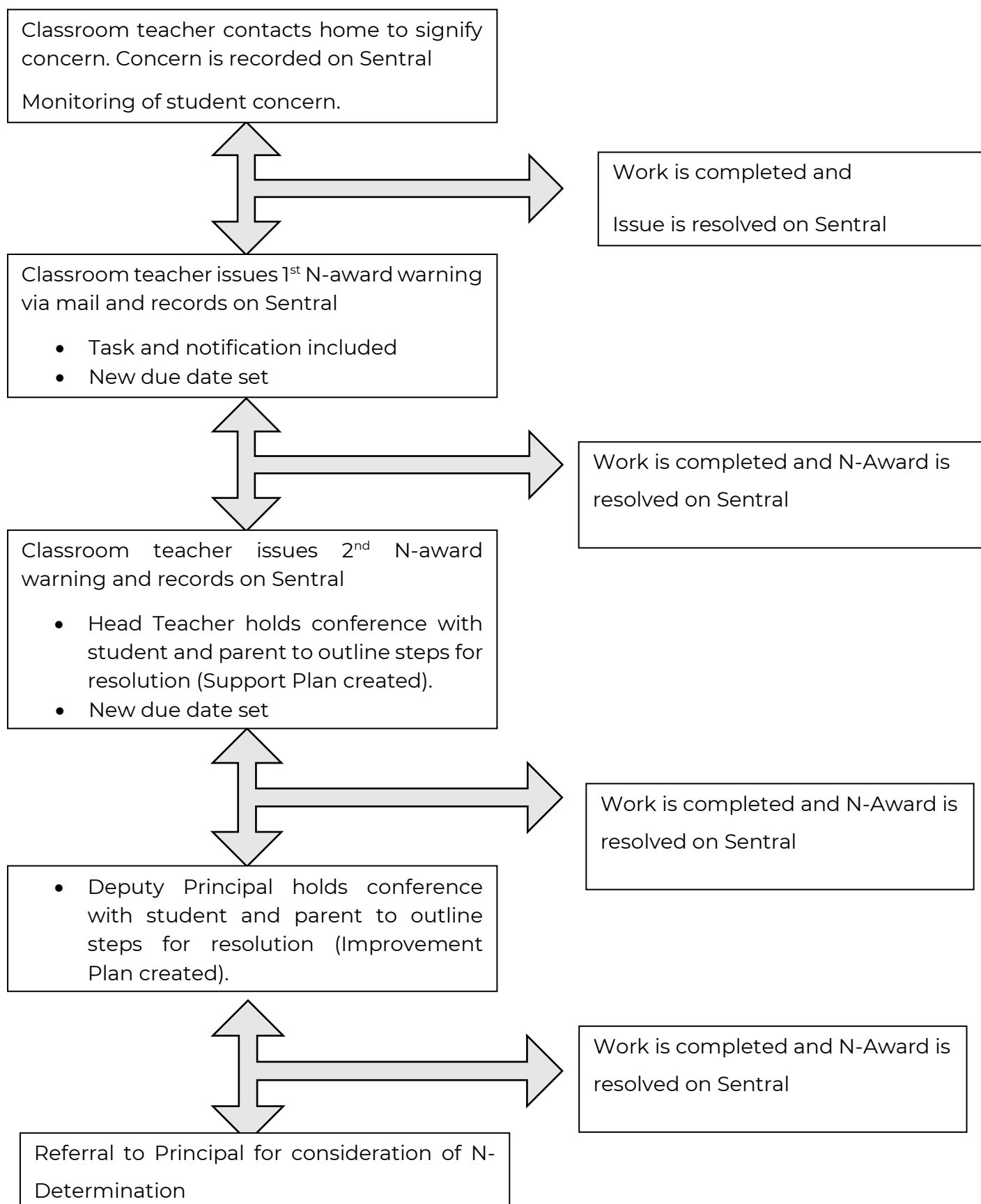
Students are consistently encouraged by school staff and parents to redress an 'N' determination; the onus rests with the student to do so.

A student is to be given an 'N' Determination when there is a failure to complete tasks which contribute in excess of 50 percent of the final assessment marks in that course.

Assessment task missed / not submitted / non-serious attempt



Sustained effort and due diligence concerns for not meeting course requirements



INTEGRITY

HSC All My Own Work

This program is designed to help HSC students follow the principles and practices of good and ethical scholarship as set out by NESA on its *HSC: All My Own Work* website at:

<http://educationstandards.nsw.edu.au/wps/portal/nesa/11-12/hsc/hsc-all-my-own-work>

All students entered for one or more HSC courses with an external examination are required to have satisfactorily completed HSC: All My Own Work or its equivalent. This requirement excludes students who are entered for Life Skills courses or NESA Endorsed courses although the program would still be available as an option for these students if deemed appropriate by the school.

What is malpractice in Stage 6 Assessment

Cheating, or malpractice, is **dishonest behaviour** by a student that gives them an **unfair advantage** over others. Most students understand what cheating in an examination means, but there are other types of behaviour that are also considered cheating: plagiarism, misrepresentation, collusion and breach of assessment conditions.

What is plagiarism?

Plagiarism is when you imply or pretend that you have written or created a piece of work that someone else originated. It is cheating, dishonest, and could jeopardise your HSC results.

Some examples of behaviour considered to be plagiarism include, but are not limited to:

- copying, buying, stealing or borrowing someone else's work in part or in whole, and presenting it as your own
- using material directly from books, journals, CDs or the internet without acknowledging the source
- building on the ideas or words of another person without appropriate acknowledgement, and/or
- using ideas, designs or the workmanship of others in practical and performance tasks without appropriate acknowledgement

What is misrepresentation?

Misrepresentation is when you deliberately mislead or deceive others by alteration, omission or fabrication of information.

Some examples of misrepresentation include:

- making up journal entries for a project

- submitting falsified or altered documents
- referencing incorrect or non-existent sources
- contriving false explanations to explain work not handed in by the due date.

What is collusion?

Collusion is when you collaborate inappropriately to generate work that was meant for individual assessment. Some examples of collusion include:

- sharing answers to an assessment with other students
- submitting work that has been substantially contributed to by another person, such as a student, parent, coach or subject expert
- contract cheating by outsourcing work to a third party
- unauthorised use of artificial intelligence technologies.

Artificial Intelligence (AI) tools, including Generative Artificial Intelligence (GenAI) such as ChatGPT, must not be used to create any part of your submitted work unless authorised as part of the Assessment Task notification. This is collusion and will result in a zero mark for the task.

What is a breach of assessment conditions?

When you sit assessment tasks and the HSC minimum standard test, you comply with the assessment conditions that are set by both the school and NESA. Some examples include:

- unauthorised electronic devices in assessment tasks, including smart watches
- disclosing information about a task to other students if they are sitting an assessment at a different time

How to avoid malpractice?

Further information can be obtained online in the leaflet, *HSC Assessments and Submitted Works – Advice to Students*, found at:

<http://educationstandards.nsw.edu.au/wps/portal/nesa/students/student-guide>

OR refer to the *All My Own Work* webpage.

Consequences of malpractice?

All assessment tasks done at school or at home **must be the student's own work**. If any malpractice is established, the **task concerned scores zero and the student jeopardises his/her eligibility for the award of the HSC**.

If an assessment task for a subject is scheduled for different periods of the same day, students are not to disclose details of the task to the cohort undertaking the task at a later time. If this occurs, this will be considered to be malpractice and a **zero mark** will be awarded to all students who have disclosed or received the information.

Allegations of malpractice will initially be investigated by the Head Teacher of the faculty concerned who will make a decision about whether a student has committed malpractice. If the Head Teacher does determine that malpractice has occurred and the student wishes to appeal the decision, they will submit their appeal to the Deputy Principal **within two (2) school days** of the Head Teacher's decision.

The deputy principal will convene an **Assessment Review Panel** to examine the case. The panel will consist of a Deputy Principal and the Head Teacher Secondary Studies. They will reach a decision and report back to the student within **TEN (10) SCHOOL DAYS**. The decision of the Assessment Review Panel ratified by the Principal will be final.

As part of the Assessment Review Panel's process:

- It is the responsibility of the student to provide evidence that malpractice has not occurred, such as providing drafts and planning documents relating to the task.

Additional Note:

- Unintentional malpractice is still considered malpractice by NESA
- If malpractice is suspected in the HSC examinations or the HSC minimum standards tests, NESA will conduct a review, even if results have already been released

NESA treats cheating in written tasks, examinations and practical work very seriously and takes measures to deal with students who are caught. Depending on the circumstances of the case, one or more of the following may apply:

- zero marks may be awarded for part or all of the examination
- you may be required to have an interview with a 'malpractice' panel at NESA
- you may lose the award of the HSC in one or more courses
- you may be ineligible for the HSC
- you may damage your ability to apply for entry to TAFE or university courses or scholarships.

Mobile phones and electronic equipment

Mobile phones must be switched off and placed in your bag **before the start of an examination**. Failure to do so will make your performance in that examination null and void. Mobile phones must be turned off and remain in bags or be collected **before a class assessment task commences**.

Other than NESA approved calculators (when required), **no other electronic equipment or instruments** (including, but not limited to, phones, tablets, smart/programmable watches) **will be permitted** in examinations, or during in-class assessment tasks.

Essential medical appliances need prior approval before the examination/assessment.

Disputing an assessment mark

If you are concerned about a mark, you must discuss this with your teacher **when the work is returned**. If you are still not satisfied, you should pursue the matter with the relevant Head Teacher within **FIVE school days** of the return of the task.

Record of marks

Each faculty keeps a register of all marks awarded for tasks. The school will **NOT provide an actual assessment mark** to students or parents, as the **final mark must remain confidential**. However, each semester report will show the student's current ranking in the assessments in each subject.

Notification of tasks

Students are to be notified in writing of formal assessment items – that is, all tasks common to all students in the course. The notification is to be standardised, using the same format as the example given in this booklet on page 23. Notice of examinations must also be given using the same format.

The notification must be given in the form of a handout, at least two weeks before the task, in addition to any other means of notification which may include, but not be limited to: assessment booklets, noticeboards, Moodle, online classrooms etc. Students are to sign upon receipt of the task, and when the task is submitted. A sample of the form to be used for this is given on the next page.

The notification sheet must contain the following:

- description of task: topic/s, type of task
- date due or date of task (test items)

- method of submission where appropriate (e.g. due by 3.20pm; must be handed in during class time, etc.)
- outcomes being assessed
- assessment criteria
- a statement about the avoidance of plagiarism, specific reference to *HSC: All My Own Work*.

Assessment Protocols

- students in Stage 6 are to use student numbers, not names
- with examination-style tasks, usual examination rules regarding conduct are to be observed.

Examination rules

1. All candidates must check the examination timetable carefully. No consideration can be given to students who arrive late for an examination or who miss an examination due to misreading the timetable.
2. Candidates are to assemble in the library quad at least 15 minutes before an examination and wait for instructions about entry to the examination centre. There should be no talking once you have entered the examination centre.
3. All candidates are to remain in the examination room until time has expired for the examination, all papers have been collected, and the examination supervisor dismisses students from the examination room.
4. Candidates must check with their subject teachers in advance to ensure they take the necessary equipment to each examination.
5. You MUST NOT:
 - a. take a programmable/smart watch into the examination room
 - b. speak to any person other than a supervisor after entering the examination room
 - c. take any electronic device into the examination, unless NESA approved
 - d. behave in any way likely to disturb the work of any other student or upset the conduct of the examination
 - e. take into the examination room, or refer to during the examination, any books or notes, any paper, or any equipment other than the equipment approved for the specific examination

- f. wear a cap/hat
 - g. take any food or drinks (other than water) into the examination room, unless you have been granted special provisions. Water in a clear bottle may be taken into the examination room.
6. Only the equipment necessary for the examination is to be placed on the examination desk. Pencil cases and other equipment must be placed on the floor under your chair. You must remove your watch and place it in clear view on the examination desk.
 7. Mobile phones must be turned off and left in your bag in the examination room.
 8. If you need to leave the examination room to use the bathroom, you must raise your hand and wait until a teacher allows you to leave. Bathroom breaks are NOT permitted during the first 30 minutes OR the last 30 minutes of the examination. Exceptions will be made ONLY in the case of an emergency.
 9. Full school uniform must be worn throughout the examination period. This includes school shoes.
 10. If a candidate is to miss an examination due to illness or misadventure, the school is to be advised before the examination is held. You are to ring the school on 9473 5000 and leave a message for the relevant Head Teacher.
 11. Candidates who miss an examination/task due to illness or misadventure, or absence, should see the appropriate subject Head Teacher immediately upon their return to school. Upon acceptance of a medical certificate or document of explanation, provision will be made for the student to sit the examination paper at an appropriate time, or alternative arrangements will be made.
 12. Candidates need only attend school when they have a scheduled examination. However, if students are at school for a morning examination and have an examination later that day, students are not permitted to leave the grounds between examinations. When a candidate's last examination for the day is finished, they must go home to study and are not to loiter at shops, railway stations, parks or other venues.



Pennant Hills High School Assessment Task Notification

Course:

Stage:

Year:

Task/Area of study:

Date issued:

Task date / Due date:

Task number:

Weighting:

Task Type:

E.g.: oral presentation, formal examination, research report, research essay, examination essay, practical performance, etc.

Task Description:

Any information that helps students understand what is expected of them; would include length, break-down of components, etc.

e.g.: A formal examination of 90 minutes duration made up of multiple-choice questions, short answer questions, source-based questions and an extended essay-style response

Outcomes assessed by this task:

E.g. BIO 12-1 to 12-7 and 12-12, 12-14, 12-15 (As per the syllabus for the course)

Criteria for assessment:

Include marking criteria where appropriate – i.e. all non-examination tasks.

For examinations: includes the rubric

Additional information:

Student numbers, not names, are to be used **(this is to be included in all non-practical Stage 6 tasks)**

Upon submission of this task you will be required to certify that your work complies with NESAs HSC: All My Own Work rules **(this to be included in all Stage 6 non-examination tasks)**

This is a formal assessment item. In Year 11, the student or parent must phone the school as soon as they are aware that they will be unable to attend the task and speak to/leave a message for the relevant Head Teacher. This does not replace the need for a medical certificate. Absence due to illness must be supported by a medical certificate, presented to the Head Teacher on the first day of your return to school, irrespective of your timetable for this subject. You must be prepared to attempt the task on the first day of your return to school and/or at a time negotiated with the Head Teacher– i.e. when your medical certificate expires.

Please see YEAR 12 ASSESSMENT AND REPORTING PROCEDURES document for further information.

Additional information may include: submission details, equipment needed, how the order will be determined for oral/practical tasks, etc.

ACHIEVEMENT

Steps to manage your assessment tasks

- Be aware of due dates. Keep an up-to-date diary of all assessment activities and other commitments. Highlight dates on the planner issued at school.
- Use a wall calendar or small whiteboard in a public space like your kitchen to note due dates if you want others in your household to help you remember deadlines.
- Start tasks early so that you can ask for help if you need it.
- Break tasks into a series of smaller steps and set deadlines for completing each step.
- Record the sources of information you use as you find them so that acknowledgements do not become a major task at the end.
- Frequently save, back up and print any work completed on a computer. The failure of technology is **not** an acceptable excuse for the late submission of work. Don't forget to keep all your earlier drafts and copies of your resources.
- Keep a copy of any work you submit for marking.

General comments on assessment

- Each subject provides information in this booklet about the types of tasks which will be set. Remember, the components of the course to be assessed and the percentage weightings given to each component are determined by NESA. The school decides the tasks.
- There may be variation in the number of tasks set or in the description of the task, but students will always be given notice of any change, in advance, in writing.
- **Two** weeks **WRITTEN** notice will be given of the date for a set task. Carefully read the information on LATE tasks and MISSED tasks.
- If a student is suspended when an assessment task is due/taking place the student must not attend school for the duration of the suspension. Assessment tasks are to be submitted on time by either mail or by delivery to the Administrative Office or to the respective faculty Head Teacher.
- The school will endeavour to monitor the dates set for tasks by having teachers of all subjects inform the Deputy Principal of planned dates. If too many tasks appear to be set over too short a time (e.g. three on the one day), the Deputy Principal will seek a variation of dates from Head Teachers. Any problems should be referred to the Deputy Principal.
- Remember, work done in assignments, etc., must be the student's efforts. It easily

becomes apparent to teachers if this is not so. If work is proven to be other than the student's efforts, a zero mark will be awarded. Ignorance of the rules regarding plagiarism is not a defense: it is the student's responsibility to read **ALL** information provided.

- While assessment tasks are obviously important, no one should lose sight of the fact that the HSC examination still remains more important, as candidates' results in the final examinations will influence the final scaled assessment mark.
- Please note that not all tasks may be weighted equally and a poor level of achievement in a major task can have significant consequences. At the same time, it should be recognised that significant variation in a student's rank may occur during the HSC year as a consequence of relatively small mark differences.
- Finally, learn to organise your time and efforts, so that deadlines and other aspects of the assessment scheme do not cause unnecessary stress. If problems seem insurmountable, there are staff in the school who are available to provide advice and guidance.

Looking ahead to the Higher School Certificate

Eligibility for an Australian Tertiary Admission Rank (ATAR)

When planning your program of study for 2025, you must satisfactorily complete 12 units of study in the Year 11 course. To be eligible for an ATAR, you must satisfactorily complete at least 10 units of ATAR courses.

The ATAR courses must include at least:

- Two units of English
- Eight units from Category A courses
- Three Board Developed courses of 2 units
- Four subjects

Calculation of the ATAR

Your ATAR is based on an aggregate of scaled marks in 10 units of ATAR courses comprising:

- Your best two units of English; and
- Your best eight units from your remaining units, with the provision that no more than two units of Category B courses be included.

The ATAR is optional. You can request that an ATAR not be calculated as a result of your HSC. For further information about the ATAR, see:

<https://www.uac.edu.au/future-applicants/atar>

HSC Disability Provisions

Students doing their Higher School Certificate (HSC) may need disability provisions for:

- a permanent condition, such as cerebral palsy or vision impairment
- a temporary condition, such as a broken arm, or
- an intermittent condition, such as back pain when sitting for long periods.

Schools are responsible for adjustments in school-based assessment tasks. NESA determines disability provisions for HSC exams. Approved provisions provide access to HSC exams (to read exam questions, think about answers and write answers) but are not approved to give an advantage over other students or to achieve potential.

NESA needs evidence that can include results of the student's performance on reading and spelling tests, work samples (extended responses) and teacher comments on adjustments that have been trialled at school.

Disability impacts students in different ways. Applying one approach for one condition does not recognise the individual needs of each student. Therefore, students with the same disability may have different provisions approved. NESA HSC provisions may differ from school-determined adjustments.

To apply for HSC provisions, you should approach the Head Teacher Wellbeing. The school submits an online application to NESA for provisions requested. The school also submits recent evidence, which may include medical reports, reading results, spelling results, writing samples and teacher comments. The school should submit all applications by the end of Term 1 2026. Late applications may be submitted for an emergency such as a broken arm, until the time of the examinations.

Assessment schedules for all subjects are available on the school website and from your teacher.

ABORIGINAL STUDIES (ACCELERATED) Year 12

Assessment Schedule

	Task 1	Task 2	Task 3	Task	Syllabus Weighting %
Nature of task	Research Study Social Justice and Human Rights Issues	Major Project Research and Inquiry Methods	Aboriginal Community Study Aboriginality and the Land OR Heritage and Identity	Trial HSC Examination	
Task timing	Term 1, Week 4	Term 1 Week 11	Term 2 Week 7	Term 3, Weeks 3-4	
Outcomes assessed	H3.1, H3.2, H3.3, H4.3	H4.1, H4.2	H1.1, H1.2, H1.3, H2.1, H2.2	H1.1, H1.2, H2.2, H3.2, H3.3	
Knowledge and understanding of course content	5	10	5	20	40
Investigation, analysis, synthesis and evaluation of information from a variety of sources and perspectives	-	15	5	5	25
Research and inquiry methods, including aspects of the Major Project	5	10	5	-	20
Communication of information, ideas and issues in appropriate forms	-	5	5	5	15
Weighting	10	40	20	30	100

OUTCOMES

- H1.1** evaluates the impact of different viewpoints of colonialism on Aboriginal and other Indigenous peoples
- H1.2** analyses and discusses the social justice and human rights issues that are contemporary consequences of colonialism on Aboriginal and other Indigenous peoples
- H1.3** assesses the representation of Aboriginal peoples and cultures for bias and stereotyping
- H2.1** examines contemporary expressions of Aboriginal and other Indigenous peoples' culture, heritage and identity
- H2.2** analyses the importance of Country as a contemporary issue impacting on Aboriginal and other Indigenous peoples' cultural, political, social and economic life
- H3.1** assesses the effectiveness of government policies, legislation and legal decisions in addressing discrimination
- H3.2** evaluates the impact of key government policies, legislation and legal decisions on the socioeconomic status of Aboriginal peoples and communities
- H3.3** evaluates initiatives that promote the social, economic and political independence of Aboriginal and other Indigenous peoples
- H4.1** plans, investigates, analyses, synthesises and communicates relevant information, incorporating Aboriginal and other Indigenous peoples' perspectives
- H4.2** undertakes community consultation and fieldwork and applies ethical research practices
- H4.3** investigates and compares the histories and cultures of Aboriginal peoples and other Indigenous peoples

AGRICULTURE

Assessment Schedule

	Task 1	Task 2	Task 3	Syllabus Weighting %
Nature of task	Open ended investigation	Farm case study	Yearly Examination	
Task timing	Term 1, Week 11	Term 2, Week 8	Term 3, Weeks 9-10	
Outcomes assessed	P2.1, P2.3, P3.1, P4.1, P5.1	P1.1, P1.2, P2.2, P5.1	P1.1, P1.2, P2.1, P2.2, P2.3, P3.1, P4.1, P5.1	
Knowledge and understanding of course content	10	10	30	50
Skills in responding to texts & communication of ideas appropriate to audience, purpose and context across all modes	20	20	10	50
Weighting	30	30	40	100

OUTCOMES

- P1.1** describes the complex, dynamic and interactive nature of agricultural production systems
- P1.2** describes the factors that influence agricultural systems
- P2.1** describes the biological and physical resources and applies the processes that cause changes in plant production systems
- P2.2** describes the biological and physical resources and applies the processes that cause changes in animal production systems
- P2.3** describes the farm as a basic unit of production
- P3.1** explains the role of decision-making in the management and marketing of agricultural products in response to consumer and market requirements
- P4.1** applies the principles and procedures of experimental design and agricultural research
- P5.1** investigates the role of associated technologies and technological innovation in producing and marketing agricultural products

ANCIENT HISTORY

Assessment Schedule

	Task 1	Task 2	Task 3	Syllabus Weighting %
Nature of task	Source analysis task	Historical Investigation	Yearly Examination	
Task timing	Term 1, Week 8	Term 2, Week 9	Term 3, Weeks 9-10	
Outcomes assessed	AH11-2, AH11-4, AH11-6, AH11-7	AH11-1, AH11-3, AH11-6, AH11-8	AH11-1, AH11-3, AH11-5, AH11-9, AH11-10	
Knowledge and understanding of course content	10	-	30	40
Historical skills in the analysis and evaluation of sources and interpretations	15	-	5	20
Historical inquiry and research	-	20	-	20
Communication of historical understanding in appropriate forms	5	15	-	20
Weighting	30	35	35	100

OUTCOMES

- AH11.1** describes the nature of continuity and change in the ancient world
- AH11.2** proposes ideas about the varying causes and effects of events and developments
- AH11.3** analyses the role of historical features, individuals and groups in shaping the past
- AH11.4** accounts for the different perspectives of individuals and groups
- AH11.5** examines the significance of historical features, people, places, events and developments of the ancient world
- AH11.6** analyses and interprets different types of sources for evidence to support an historical account or argument
- AH11.7** discusses and evaluates differing interpretations and representations of the past
- AH11.8** plans and conducts historical investigations and presents reasoned conclusions, using relevant evidence from a range of sources
- AH11.9** communicates historical understanding, using historical knowledge, concepts and terms, in appropriate and well-structured forms
- AH11.10** discusses contemporary methods and issues involved in the investigation of ancient history

BIOLOGY

Assessment Schedule

	Task 1	Task 2	Task 3	Syllabus Weighting %
Nature of task	Application of skills	Depth Study	Yearly Examination	
Task timing	Term 1, Week 11	Term 2, Week 8	Term 3, Weeks 9-10	
Outcomes assessed	BIO11-1 – BIO 11-8	BIO11-1 – BIO11-7 BIO11-9 – BIO11-11	BIO11-1 – BIO11-11	
Skills in working scientifically	20	20	20	60
Knowledge and understanding of course content	10	10	20	40
Weighting	30	30	40	100

OUTCOMES

- BIO11.1** develops and evaluates questions and hypotheses for scientific investigation
- BIO11.2** designs and evaluates investigations in order to obtain primary and secondary data and information
- BIO11.3** conducts investigations to collect valid and reliable primary and secondary data and information
- BIO11.4** selects and processes appropriate qualitative and quantitative data and information using a range of appropriate media
- BIO11.5** analyses and evaluates primary and secondary data and information
- BIO11.6** solves scientific problems using primary and secondary data, critical thinking skills and scientific processes
- BIO11.7** communicates scientific understanding using suitable language and terminology for a specific audience or purpose
- BIO11.8** describes single cells as the basis for all life by analysing and explaining cells' ultrastructure and biochemical processes
- BIO11.9** develop knowledge and understanding of the Earth's biodiversity and the effect of evolution
- BIO11.10** describes biological diversity by explaining the relationships between a range of organisms in terms of specialisation for selected habitats and evolution of species
- BIO11.11** analyses ecosystem dynamics and the interrelationships of organisms within the ecosystem

BUSINESS STUDIES

Assessment Schedule

	Task 1	Task 2	Task 3	
Nature of task	In-class business report Nature of Business	In-class Business Report Research based Hypothetical business Contemporary business issues	Yearly Examination	Syllabus Weighting %
Task timing	Term 1, Week 9	Term 2, Week 9	Term 3, Weeks 9-10	
Outcomes assessed	P2, P6, P8, P9	P1, P4, P9	P1-P10	
Knowledge and understanding of course content	10	10	20	40
Stimulus-based skills	5	5	10	20
Inquiry and research	5	15	-	20
Communication of business information, ideas and issues in appropriate forms	5	5	10	20
Weighting	25	35	40	100

OUTCOMES

- P1** discusses the nature of business, its role in society and types of business structure
- P2** explains the internal and external influences on businesses
- P3** describes the factors contributing to the success or failure of small to medium enterprises
- P4** assesses the processes and interdependence of key business functions
- P5** examines the application of management theories and strategies
- P6** analyses the responsibilities of business to internal and external stakeholders
- P7** plans and conducts investigations into contemporary business issues
- P8** evaluates information for actual and hypothetical business situations
- P9** communicates business information and issues in appropriate formats
- P10** applies mathematical concepts appropriately in business situations

CHEMISTRY

Assessment Schedule

	Task 1	Task 2	Task 3	Syllabus Weighting %
Nature of task	Application of skills	Depth Study	Yearly Examination	
Task timing	Term 1, Week 10	Term 2, Week 8	Term 3, Weeks 9-10	
Outcomes assessed	CH 11-4 – CH 11-8	CH11-1 – CH11-7 CH11-9, CH11-10	CH11-1 – CH11-11	
Skills in working scientifically	20	20	25	60
Knowledge and understanding of course content	10	10	15	40
Weighting	30	30	40	100

OUTCOMES

- CH11.1** develops and evaluates questions and hypotheses for scientific investigation
- CH11.2** designs and evaluates investigations in order to obtain primary and secondary data and information
- CH11.3** conducts investigations to collect valid and reliable primary and secondary data and information
- CH11.4** selects and processes appropriate qualitative and quantitative data and information using a range of appropriate media
- CH11.5** analyses and evaluates primary and secondary data and information
- CH11.6** solves scientific problems using primary and secondary data, critical thinking skills and scientific processes
- CH11.7** communicates scientific understanding using suitable language and terminology for a specific audience or purpose
- CH11.8** explores the properties and trends in the physical, structural and chemical aspects of matter
- CH11.9** describes, applies and quantitatively analyses the mole concept and stoichiometric relationships
- CH11.10** explores the many different types of chemical reactions, in particular the reactivity of metals, and the factors that affect the rate of chemical reactions
- CH11.11** analyses the energy considerations in the driving force for chemical reactions

CHINESE BEGINNERS

Assessment Schedule

	Task 1	Task 2	Task 3	Syllabus Weighting %
Nature of task	Script comprehension and response	Comprehension and interview	Yearly Examination	
Task timing	Term 1, Week 9	Term 2, Week 8	Term 3, Weeks 9-10	
Outcomes assessed	2.1, 2.3, 3.1, 3.2	1.1, 1.3, 2.1, 2.2, 2.5	All	
Listening	20	-	10	30
Reading	-	20	10	30
Speaking	-	10	10	20
Writing	10	-	10	20
Weighting	30	30	40	100

OUTCOMES

1. Exchange information, opinions and experiences in Chinese

- 1.1 establishes and maintains communication in Chinese
- 1.2 manipulates linguistic structures to express ideas effectively in Chinese
- 1.3 sequences ideas and information
- 1.4 applies knowledge of the culture of Chinese-speaking communities to interact appropriately

2. Understanding texts

- 2.1 understands and interprets information in texts using a range of strategies
- 2.2 conveys the gist of and identifies specific information in texts
- 2.3 summarises the main points of a text
- 2.4 draws conclusions from or justifies an opinion about a text
- 2.5 identifies the purpose, context and audience of a text
- 2.6 identifies and explains aspects of the culture of Chinese-speaking communities in texts

3. Producing Texts

- 3.1 produces texts appropriate to audience, purpose and context
- 3.2 structures and sequences ideas and information
- 3.3 applies knowledge of diverse linguistic structures to convey information and express original ideas in Chinese
- 3.4 applies knowledge of the culture of Chinese-speaking communities to the production of texts

CHINESE CONTINUERS

Assessment Schedule

	Task 1	Task 2	Task 3	
Nature of task	Listening comprehension and writing task Personal identity, Recreation and leisure	Grammar and Hanzi Test Education and aspirations, Youth issues	Yearly Examination	Syllabus Weighting %
Task timing	Term 1, Week 9	Term 2, Week 8	Term 3, Weeks 9-10	
Outcomes assessed	1.1, 1.2, 1.3, 1.4, 2.1, 2.3, 3.1, 4.1	2.1, 3.1, 3.2, 3.5, 3.6, 4.1, 4.3	1.1 - 1.4 2.1 – 2.3 3.1 – 3.6 4.1 – 4.3	
Listening	20	-	10	30
Reading	-	20	10	30
Speaking	-	10	10	20
Writing	10	-	10	20
Weighting	30	30	40	100

OUTCOMES

1. Exchange information, opinions and experiences in Chinese

- 1.1 uses a range of strategies to maintain communication
- 1.2 conveys information appropriate to context, purpose and audience
- 1.3 exchanges and justifies opinions and ideas
- 1.4 reflects on aspects of past, present and future experience

2. Express ideas through the production of original texts in Chinese

- 2.1 applies knowledge of language structures to create original text #
- 2.2 composes informative, descriptive, reflective, persuasive or evaluative texts appropriate to context, purpose and/or audience
- 2.3 structures and sequences ideas and information

3. Analyse, process and responds to texts that are in Chinese

- 3.1 conveys the gist of texts and identifies specific information
- 3.2 summarises the main ideas
- 3.3 identifies the tone, purpose, context and audience

3.4 draws conclusions from or justifies an opinion

3.5 interprets, analyses and evaluates information

3.6 infers points of view, attitudes or emotions from language or context

4. Understand aspects of the language and culture of Chinese-speaking communities

4.1 recognises and employs language appropriate to different social contexts

4.2 identifies values, attitudes and beliefs of cultural significance

4.3 reflects upon significant aspects of language and culture

written or spoken texts created by students incorporating their own ideas

COMMUNITY AND FAMILY STUDIES

Assessment Schedule

	Task 1	Task 2	Task 3	Syllabus Weighting %
Nature of task	Extended response	Experiential task	Yearly Examination	
Task timing	Term 1, Week 7	Term 2, Week 10	Term 3, Weeks 9-10	
Outcomes assessed	P4.2, P6.1	P2.2, P2.4, P3.2	ALL	
Knowledge and understanding of course content	10	10	20	40
Skills in critical thinking, research methodology, analysing and communicating	20	20	20	60
Weighting	30	30	40	100

OUTCOMES

- 1.1 describes the contribution an individual's experiences, values, attitudes and beliefs make to the development of goals
- 1.2 proposes effective solutions to resource problems
- 2.1 accounts for the roles and relationships that individuals adopt within groups
- 2.2 describes the role of the family and other groups in the socialisation of individuals
- 2.3 examines the role of leadership and group dynamics in contributing to positive interpersonal relationships and achievement
- 2.4 analyses the interrelationships between internal and external factors and their impact on family functioning
- 3.1 explains the changing nature of families and communities in contemporary society
- 3.2 analyses the significance of gender in defining roles and relationships
- 4.1 utilises research methodology appropriate to the study of social issues
- 4.2 presents information in written, oral and graphic form
- 5.1 applies management processes to maximise the efficient use of resources
- 6.1 distinguishes those actions that enhance wellbeing
- 6.2 uses critical thinking skills to enhance decision making
- 7.1 appreciates differences among individuals, groups and families within communities and values their contributions to society
- 7.2 develops a sense of responsibility for the wellbeing of themselves and others
- 7.3 appreciates the value of resource management in response to change
- 7.4 values the place of management in coping with a variety of role expectations

DRAMA

Assessment Schedule

	Task 1	Task 2	Task 3	Syllabus Weighting %
Nature of task	Group performance and essay	Production role, logbook and reflection statement	Group performance and logbook	
Task timing	Term 1, Week 11	Term 3, Week 2	Term 3, Weeks 9-10	
Outcomes assessed	P1.2, P1.3, P1.4, P1.5, P2.4, P2.6, P3.2, P3.3, P3.4	P1.3, P1.4, P1.6, P1.7, P1.8, P2.2, P2.3, P2.5, P3.1, P3.2, P3.3	P1.1, P1.4, P1.5, P1.6, P2.2, P2.3, P3.3	
Making	10	10	20	40
Performing	10	10	10	30
Critically studying	10	20	-	30
Weighting	30	40	30	100

OUTCOMES

Making	P 1.1	develops acting skills in order to adopt and sustain a variety of characters and roles
	P 1.2	explores ideas and situations, expressing them imaginatively in dramatic form
	P 1.3	demonstrates performance skills appropriate to a variety of styles and media
	P 1.4	understands, manages and manipulates theatrical elements and elements of production, using them perceptively and creatively
	P 1.5	understands, demonstrates and records the process of developing and refining ideas and scripts through to performance
	P 1.6	demonstrates directorial and acting skills to communicate meaning through dramatic action
	P 1.7	understands the collaborative nature of drama and theatre and demonstrates the self-discipline needed in the process of collaboration
	P 1.8	recognises the value of individual contributions to the artistic effectiveness of the whole
Performing	P 2.1	understands the dynamics of actor-audience relationship
	P 2.2	understands the contributions to a production of the playwright, director, dramaturg, designers, front-of-house staff, technical staff and producers
	P 2.3	demonstrates directorial and acting skills to communicate meaning through dramatic action

- P 2.4** performs effectively in a variety of styles using a range of appropriate performance techniques, theatrical and design elements and performance spaces
- P 2.5** understands and demonstrates the commitment, collaboration and energy required for a production
- P 2.6** appreciates the variety of styles, structures and techniques that can be used in making and shaping a performance
- P 3.1** critically appraises and evaluates, both orally and in writing, personal performances and the performances of others
- P 3.2** understands the variety of influences that have impacted upon drama and theatre performance styles, structures and techniques
- P 3.3** analyses and synthesises research and experiences of dramatic and theatrical styles, traditions and movements
- P 3.4** appreciates the contribution that drama and theatre make to Australian and other societies by raising awareness and expressing ideas about issues of interest

ECONOMICS

Assessment Schedule

	Task 1	Task 2	Task 3	Syllabus Weighting %
Nature of task	In class objective response plus a short response submission	In class objective response and short response plus an extended response submission	Yearly Examination	
Task timing	Term 1, Week 10	Term 2, Week 7	Term 3, Weeks 9-10	
Outcomes assessed	P1, P4, P9, P10	P1, P5, P6, P7, P8, P9, P10, P11	P1 - P11	
Knowledge and understanding of course content	15	15	10	40
Stimulus-based skills	4	6	10	20
Inquiry and research	4	6	10	20
Communication of economic information ideas and issues in appropriate forms	4	6	10	20
Weighting	27	33	40	100

OUTCOMES

- P 1** demonstrates understanding of economic terms, concepts and relationships
- P 2** explains the economic role of individuals, firms and government in an economy
- P 3** describes, explains and evaluates the role and operation of markets
- P 4** compares and contrasts aspects of different economies
- P 5** analyses the relationship between individuals, firms, institutions and government in the Australian economy
- P 6** explains the role of government in the Australian economy
- P 7** identifies the nature and causes of economic problems and issues for individuals, firms and governments
- P 8** applies appropriate terminology, concepts and theories in economic contexts
- P 9** selects and organises information from a variety of sources for relevance and reliability
- P10** communicates economic information, ideas and issues in appropriate forms
- P11** applies mathematical concepts in economic contexts
- P12** works independently and in groups to achieve appropriate goals in set timelines

ENGINEERING STUDIES

Assessment Schedule

	Task 1	Task 2	Task 3	Syllabus Weighting %
Nature of task	Engineering materials	Engineering solution and report *	Yearly Examination	
Task timing	Term 1, Week 9	Term 2, Week 7	Term 3, Weeks 9-10	
Outcomes assessed	P1.1, P1.2, P2.1, P3.2	P3.1, P4.1, P5.1, P6.2	ALL	
Knowledge and understanding of course content	15	20	25	60
Knowledge and skills in research, problem solving and communication related to engineering practice	10	15	15	40
Weighting	25	35	40	100

* MANDATORY TASK

OUTCOMES

- P 1.1** identifies the scope of engineering and recognises current innovations
- P 1.2** explains the relationship between properties, structure, uses and applications of materials in engineering
- P 2.1** describes the types of materials, components and processes and explains their implications for engineering development
- P 2.2** describes the nature of engineering in specific fields and its importance to society
- P 3.1** uses mathematical, scientific and graphical methods to solve problems of engineering practice
- P 3.2** develops written, oral and presentation skills and applies these to engineering reports
- P 3.3** applies graphics as a communication tool
- P 4.1** describes developments in technology and their impact on engineering products
- P 4.2** describes the influence of technological change on engineering and its effect on people
- P 4.3** identifies the social, environmental and cultural implications of technological change in engineering
- P 5.1** demonstrates the ability to work both individually and in teams
- P 5.2** applies management and planning skills related to engineering
- P 6.1** applies knowledge and skills in research and problem-solving related to engineering
- P 6.2** applies skills in analysis, synthesis and experimentation related to engineering

ENGLISH ADVANCED

Assessment Schedule

	Task 1	Task 2	Task 3	Syllabus Weighting %
Nature of task	Creative writing and reflection	Multimodal vlog presentation	Yearly Examination	
Task timing	Term 1, Week 9	Term 2, Week 9	Term 3, Weeks 9-10	
Outcomes assessed	EA11.1, EA11.2, EA11.3, EA11.9	EA11.2, EA11.4, EA11.5, EA11.6	EA11.1, EA11.3, EA11.7, EA11.8	
Knowledge and understanding of course content	15	15	20	50
skills in responding to texts and communication of ideas appropriate to audience, purpose and context across all modes	15	15	20	50
Weighting	30	30	40	100

OUTCOMES

- EA11.1** responds to, composes and evaluates complex texts for understanding, interpretation, critical analysis, imaginative expression and pleasure
- EA11.2** uses and evaluates processes, skills and knowledge required to effectively respond to and compose texts in different modes, media and technologies
- EA11.3** analyses and uses language forms, features and structures of texts considering appropriateness for specific purposes, audiences and contexts and evaluates their effects on meaning
- EA11.4** strategically uses knowledge, skills and understanding of language concepts and literary devices in new and different contexts
- EA11.5** thinks imaginatively, creatively, interpretively and critically to respond to, evaluate and compose texts that synthesise complex information, ideas and arguments
- EA11.6** investigates and evaluates the relationships between texts
- EA11.7** evaluates the diverse ways texts can represent personal and public worlds and recognises how they are valued
- EA11.8** explains and evaluates cultural assumptions and values in texts and their effects on meaning
- EA11.9** reflects on, evaluates and monitors own learning and adjusts individual and collaborative processes to develop as an independent learner

ENGLISH AS AN ADDITIONAL LANGUAGE OR DIALECT (EAL/D)

Assessment Schedule

	Task 1	Task 2	Task 3	Syllabus Weighting %
Nature of task	Multimodal task Language Texts and Context	Extended response – close study of a text	Yearly Examination	
Task timing	Term 1, Week 9	Term 2, Week 9	Term 3, Weeks 9-10	
Outcomes assessed	EAL11.1a, EAL11.2, EAL11.3, EAL11.5, EAL11.9	EAL11.1A, EAL11.3, EAL11.4, EAL11.1B	EAL11.1A, EAL11.3, EAL11.5, EAL11.6, EAL11.8, EAL11.9	
Knowledge and understanding of course content	15	15	20	50
skills in responding to texts and communication of ideas appropriate to audience, purpose and context across all modes	15	15	20	50
Weighting	30	30	40	100

OUTCOMES

- EAL11.1A** responds to and composes increasingly complex texts for understanding, interpretation, critical analysis, imaginative expression and pleasure
- EAL11.1B** communicates information, ideas and opinions in familiar personal, social and academic contexts
- EAL11.2** uses and evaluates processes, skills and knowledge necessary for responding to and composing a wide range of texts in different media and technologies
- EAL11.3** identifies, selects and uses language forms, features and structures of texts appropriate to a range of purposes, audiences and contexts, and analyses their effects on meaning
- EAL11.4** applies knowledge, skills and understanding of literary devices, language concepts and mechanics into new and different contexts
- EAL11.5** thinks imaginatively, creatively, interpretively and critically to respond to and represent complex ideas, information and arguments in a wide range of texts
- EAL11.6** investigates and explains the relationships between texts
- EAL11.7** understands and assesses the diverse ways texts can represent personal and public worlds
- EAL11.8** identifies, explains and reflects on cultural references and perspectives in texts and examines their effects on meaning
- EAL11.9** reflects on, assesses and monitors own learning and develops individual and collaborative processes to become an independent learner

ENGLISH EXTENSION

Assessment Schedule

	Task 1	Task 2	Task 3	Syllabus Weighting %
Nature of task	Creative writing	Essay	TED Talk presentation	
Task timing	Term 1, Week 10	Term 2, Week 10	Term 3, Weeks 9-10	
Outcomes assessed	EE11.1, EE11.2, EE11.3, EE11.4, EE11.5	EE11.1, EE11.2, EE11.3, EE11.4, EE11.5	EE11.1, EE11.2, EE11.3, EE11.6	
Knowledge and understanding of texts and why they are valued	15	15	20	50
Skills in complex analysis, composition and investigation	15	15	20	50
Weighting	30	30	40	100

OUTCOMES

- EE11.1** demonstrates and applies considered understanding of the dynamic relationship between text, purpose, audience and context, across a range of modes, media and technologies
- EE11.2** analyses and experiments with language forms, features and structures of complex texts, evaluating their effects on meaning in familiar and new contexts
- EE11.3** thinks deeply, broadly and flexibly in imaginative, creative, interpretive and critical ways to respond to, compose and explore the relationships between sophisticated texts
- EE11.4** develops skills in research methodology to undertake effective independent investigation
- EE11.5** articulates understanding of how and why texts are echoed, appropriated and valued in a range of contexts
- EE11.6** reflects on and assesses the development of independent learning gained through the processes of research, writing and creativity

ENGLISH STANDARD

Assessment Schedule

	Task 1	Task 2	Task 3	Syllabus Weighting %
Nature of task	Creative writing and reflection	Multimodal vlog presentation	Yearly Examination	
Task timing	Term 1, Week 9	Term 2, Week 9	Term 3, Weeks 9-10	
Outcomes assessed	EN11.1, EN11.2, EN11.3, EN11.9	EN11.2, EN11.4, EN11.5, EN11.6	EN11.1, EN11.3, EN11.7, EN11.8	
Knowledge and understanding of course content	15	15	20	50
skills in responding to texts and communication of ideas appropriate to audience, purpose and context across all modes	15	15	20	50
Weighting	30	30	40	100

OUTCOMES

- EN11.1** responds to and composes increasingly complex texts for understanding, interpretation, analysis, imaginative expression and pleasure
- EN11.2** uses and evaluates processes, skills and knowledge required to effectively respond to and compose texts in different modes, media and technologies
- EN11.3** analyses and uses language forms, features and structures of texts, considers appropriateness for purpose, audience and context and explains effects on meaning
- EN11.4** applies knowledge, skills and understanding of language concepts and literary devices into new and different contexts
- EN11.5** thinks imaginatively, creatively, interpretively and analytically to respond to and compose texts that include considered and detailed information, ideas and arguments
- EN11.6** investigates and explains the relationships between texts
- EN11.7** understands and explains the diverse ways texts can represent personal and public worlds
- EN11.8** identifies and explains cultural assumptions in texts and their effects on meaning
- EN11.9** reflects on, assesses and monitors own learning and develops individual and collaborative processes to become an independent learner

ENGLISH STUDIES

Assessment Schedule

	Task 1	Task 2	Task 3	
Nature of task	Written report on career field and employment Achieving through English	Multimodal vlog presentation	Portfolio of work	Syllabus Weighting %
Task timing	Term 1, Week 8	Term 2, Week 8	Term 3, Weeks 9-10	
Outcomes assessed	ES11.1, ES11.4, ES11.5, ES11.6	ES11.2, ES11.6, ES11.7, ES11.8	ES11.1, ES11.3, ES11.4, ES11.5, ES11.7, ES11.9, ES11.10	
Knowledge and understanding of course content	15	15	20	50
skills in: comprehending texts communicating ideas using language accurately, appropriately and effectively	15	15	20	50
Weighting	30	30	40	100

OUTCOMES

- ES11.1** comprehends and responds to a range of texts, including short and extended texts, literary texts and texts from academic, community, workplace and social contexts for a variety of purposes
- ES11.2** identifies and uses strategies to comprehend written, spoken, visual, multimodal and digital texts that have been composed for different purposes and contexts
- ES11.3** gains skills in accessing, comprehending and using information to communicate in a variety of ways
- ES11.4** composes a range of texts with increasing accuracy and clarity in different forms
- ES11.5** develops knowledge, understanding and appreciation of how language is used, identifying specific language forms and features that convey meaning in texts
- ES11.6** uses appropriate strategies to compose texts for different modes, media, audiences, contexts and purposes
- ES11.7** represents own ideas in critical, interpretive and imaginative texts
- ES11.8** Identifies and describes relationships between texts
- ES11.9** identifies and explores ideas, values, points of view and attitudes expressed in texts, and considers ways in which texts may influence, engage and persuade
- ES11.10** monitors and reflects on aspects of their individual and collaborative processes in order to plan for future learning

ENTERPRISE COMPUTING

Assessment Schedule

	Task 1	Task 2	Task 3	
Nature of task	Interactive Media and UX project	Networking systems and social computing project	Yearly Examination	Syllabus Weighting %
Task timing	Term 1, Week 9	Term 2, Week 8	Term 3, Weeks 9-10	
Outcomes assessed	EC11.04, EC11.08, EC11.09, EC11.11	EC11.01, EC11.03, EC11.04, EC11.06, EC11.07, EC11.09	EC11.01–EC11.03, EC11.05–EC11.11	
Knowledge and understanding of course content	15	10	25	50
Knowledge and skills in the practical application of the content	15	25	10	50
Weighting	30	35	35	100

OUTCOMES

- EC11.01** describes how systems are used in a range of enterprises
- EC11.02** describes the function of data and information within enterprise computing systems
- EC11.03** describes how data is safely and securely collected, stored and manipulated when developing enterprise computing systems
- EC11.04** describes how data is used in enterprise computing systems
- EC11.05** applies tools and resources to analyse datasets
- EC11.06** explains how innovative technologies have influenced enterprise computing systems
- EC11.07** explores the social, ethical and legal implications of the application of enterprise computing systems on the individual, society and the environment
- EC11.08** selects and uses tools and resources to design and develop an enterprise computing system
- EC11.09** documents the management and evaluates the development of an enterprise solution
- EC11.10** investigates the effectiveness of an enterprise computing system
- EC11.11** communicates an enterprise computing solution to an intended audience

FOOD TECHNOLOGY

Assessment Schedule

	Task 1	Task 2	Task 3	Syllabus Weighting %
Nature of task	Food selection research report and preparation	Food nutrients investigation and preparation	Yearly Examination	
Task timing	Term 1, Week 8	Term 3, Week 2	Term 3, Weeks 9-10	
Outcomes assessed	P1.2, P2.2, P3.2, P4.1, P4.2, P5.1	P2.1, P2.2, P3.1, P3.2, P4.3, P5.1	P1.1, P1.2, P2.2, P4.2, P4.4, P5.1	
Knowledge and understanding of course content	5	5	30	50
Knowledge and skills in designing, researching, analysing and evaluating	15	15	-	
Skills in experimenting and preparing food by applying theoretical concepts	15	15	-	50
Weighting	35	35	30	100

OUTCOMES

- P1.1** identifies and discusses a range of historical and contemporary factors which influence the availability of particular foods
- P1.2** accounts for individual and group food selection patterns in terms of physiological, psychological, social and economic factors
- P2.1** explains the role of food nutrients in human nutrition
- P2.2** identifies and explains the sensory characteristics and functional properties of food
- P3.1** assesses the nutrient value of meals/diets for particular individuals and groups
- P3.2** presents ideas in written, graphic and oral form using computer software where appropriate
- P4.1** selects appropriate equipment, applies suitable techniques, and utilises safe and hygienic practices when handling food
- P4.2** plans, prepares and presents foods which reflect a range of the influences on food selection
- P4.3** selects foods, plans and prepares meals/diets to achieve optimum nutrition for individuals and groups
- P4.4** applies an understanding of the sensory characteristics and functional properties of food to the preparation of food products
- P5.1** generates ideas and develops solutions to a range of food situations

GEOGRAPHY

Assessment Schedule

	Task 1	Task 2	Task 3	Syllabus Weighting %
Nature of task	Extended Response Earth's natural systems	Geographical investigation Research task	Yearly Examination	
Task timing	Term 1, Week 10	Term 3, Week 2	Term 3, Weeks 9-10	
Outcomes assessed	GE11.01, GE11.02, GE11.05, GE11.07, GE11.09	GE11.02, GE11.05, GE11.06, GE11.07, GE11.08, GE11.09	GE11.01 - GE11.09	
Knowledge and understanding of course content	10	10	20	40
Geographical skills and tools	5	5	10	20
Geographical inquiry and research including fieldwork	5	15	-	20
Communication of geographical information, ideas and issues in appropriate forms	5	5	10	20
Weighting	25	35	40	100

OUTCOMES

- GE11.01** examines places, environments and natural and human phenomena, for their characteristics, spatial patterns, interactions and changes over time
- GE11.02** explains geographical processes and influences, at a range of scales, that form and transform places and environments
- GE11.03** explains geographical opportunities and challenges, and varying perspectives and responses
- GE11.04** assesses responses and management strategies, at a range of scales, for sustainability
- GE11.05** analyses and synthesises relevant geographical information from a variety of sources
- GE11.06** identifies geographical methods used in geographical inquiry and their relevance in the contemporary world
- GE11.07** applies geographical inquiry skills and tools, including spatial technologies, fieldwork, and ethical practices, to investigate places and environments
- GE11.08** applies mathematical ideas and techniques to analyse geographical data
- GE11.09** communicates and applies geographical understanding, using geographical knowledge, concepts, terms and tools, in appropriate forms

HEALTH AND MOVEMENT STUDIES

Assessment Schedule

	Task 1	Task 2	Task 3	Syllabus Weighting %
Nature of task	Depth Study Research and report	Collaborative investigation Exploration and presentation	Yearly Examination	
Task timing	Term 1, Week 8	Term 2, Week 10	Term 3, Weeks 9-10	
Outcomes assessed	HM11.01, HM11.02, HM11.07, HM11.10	HM11.03-HM11.06 HM11.08-HM11.10	HM11.03, HM11.04	
Knowledge and understanding of course content	5	10	25	40
Skills in collaboration, analysis, communication, creative thinking, problem solving and research	25	25	10	60
Weighting	30	35	35	100

OUTCOMES

- HM11.01** interprets meanings, measures and patterns of health experienced by Australians
- HM11.02** analyses methods and resources to improve and advocate for the health of young Australians
- HM11.03** analyses the systems of the body in relation to movement
- HM11.04** investigates movement skills and psychology to improve participation and performance
- HM11.05** Collaboration: demonstrates strategies to positively interact with others to develop an understanding of health and movement concepts
- HM11.06** Analysis: analyses the relationships and implications of health and movement concepts
- HM11.07** Communication: communicates health and movement concepts to audiences and contexts, using a variety of modes
- HM11.08** Creative thinking: generates new ideas that are meaningful and relevant to health and movement contexts
- HM11.09** Problem-solving: proposes and evaluates solutions to health and movement issues
- HM11.10** Research: analyses a range of sources to make conclusions about health and movement concepts

HOSPITALITY - KITCHEN OPERATIONS AND COOKERY



Education

Cookery
Qualification: SIT20421 Certificate II in Cookery
Cohort 2023 - 2024
Training Package SIT Tourism, Travel and Hospitality (version 2.1)

RTO - Department of Education - 90333, 90222, 90072, 90162

VET - Certificate II in Cookery Assessment Schedule

Assessment Tasks for SIT20421 Certificate II in Cookery Ongoing assessment of skills and knowledge is collected throughout the course and forms part of the evidence of competence of students.			Task 1	Task 2
			Term 1	Term 2
Code	Unit of Competency	HSC Examinable		
SITXWHS005	Participate in safe work practices	X	X	
SITXFSA005	Use hygienic practices for food safety	X	X	
SITXFSA006	Participate in safe food handling practices	X	X	
SITHCCC025	Prepare and present sandwiches		X	
SITXCOM007	Show cultural sensitivity	X		X
SITXCCS011	Interact with customers	X		X

Depending on the achievement of units of competency, the possible qualification outcome is SIT20421 Certificate II in Cookery

For students sitting the optional HSC examination, an estimated mark is required. This mark is to be an estimate of likely performance in the HSC examination and will reflect each student's achievement of tasks similar to the HSC examination, such as a trial HSC examination.

The assessment components in this course are competency based. This means that students need to demonstrate that they have gained and can apply the specific knowledge and skills of each unit of competency to industry standards. Competency assessment is graded as "not yet competent" or "competent". In some cases, other descriptive words may be used leading up to "competent".

INDUSTRIAL TECHNOLOGY

Assessment Schedule

	Task 1	Task 2	Task 3	Syllabus Weighting %
Nature of task	Planning and communication	Preliminary project	Yearly Examination	
Task timing	Term 1, Week 8	Term 3, Week 7	Term 3, Weeks 9-10	
Outcomes assessed	P3.1, P3.3, P5.1, P5.2	P2.1, P3.1, P3.2, P4.1, P4.2, P4.3, P5.2	P1.1, P1.2, P2.1, P6.1, P7.1	
Knowledge and understanding of course content	10	10	20	60
Knowledge and skills in the management, communication and production of projects	10	30	20	40
Weighting	20	40	40	100

OUTCOMES

- P 1.1** describes the organisation and management of an individual business within the focus area industry
- P 1.2** identifies appropriate equipment, production and manufacturing techniques, including new and developing technologies
- P 2.1** describes and uses safe working practices and correct workshop equipment maintenance techniques
- P 2.2** works effectively in team situations
- P 3.1** sketches, produces and interprets drawings in the production of projects
- P 3.2** applies research and problem-solving skills
- P 3.3** demonstrates appropriate design principles in the production of projects
- P 4.1** demonstrates a range of practical skills in the production of projects
- P 4.2** demonstrates competency in using relevant equipment, machinery and processes
- P 4.3** identifies and explains the properties and characteristics of materials/components through the production of projects
- P 5.1** uses communication and information processing skills
- P 5.2** uses appropriate documentation techniques related to the management of projects
- P 6.1** identifies the characteristics of quality manufactured products
- P 6.2** identifies and explains the principles of quality and quality control
- P 7.1** identifies the impact of one related industry on the social and physical environment
- P 7.2** identifies the impact of existing, new and emerging technologies of one related industry on society and the environment

JAPANESE BEGINNERS

Assessment Schedule

	Task 1	Task 2	Task 3	Syllabus Weighting %
Nature of task	Script comprehension and response	Comprehension and interview	Yearly Examination	
Task type	Term 1, Week 9	Term 2, Week 8	Term 3, Weeks 9-10	
Outcomes assessed	1.2, 1.3, 2.1, 3.1, 3.2, 3.3	1.4, 2.1, 2.2, 2.3, 2.4, 2.5, 3.1, 3.3	1.1 - 1.4 2.1 – 2.6 3.1 – 3.4	
Listening	-	15	15	30
Reading	10	5	15	30
Speaking	15	-	5	20
Writing	5	10	5	20
Weighting	30	30	40	100

OUTCOMES

1. Exchange information, opinions and experiences in Chinese

- 1.1 establishes and maintains communication in Japanese
- 1.2 manipulates linguistic structures to express ideas effectively in Japanese
- 1.3 sequences ideas and information
- 1.4 applies knowledge of the culture of Japanese-speaking communities to interact appropriately

2. Understanding texts

- 2.1 understands and interprets information in texts using a range of strategies
- 2.2 conveys the gist of and identifies specific information in texts
- 2.3 summarises the main points of a text
- 2.4 draws conclusions from or justifies an opinion about a text
- 2.5 identifies the purpose, context and audience of a text
- 2.6 identifies and explains aspects of the culture of Japanese-speaking communities in texts

3. Producing Texts

- 3.1 produces texts appropriate to audience, purpose and context
- 3.2 structures and sequences ideas and information

- 3.3** applies knowledge of diverse linguistic structures to convey information and express original ideas in Japanese
- 3.4** applies knowledge of the culture of Japanese speaking communities to the production of texts

JAPANESE CONTINUERS

Assessment Schedule

	Task 1	Task 2	Task 3	
Nature of task	Speech and question time Self, family, friends, daily routines	Grammar and Kanji test Neighbourhood and school	Yearly Examination	Syllabus Weighting %
Task type	Term 1, Week 8	Term 2, Week 8	Term 3, Weeks 9-10	
Outcomes assessed	1.1, 1.2, 1.3, 1.4, 2.1, 2.2, 2.3, 4.1	2.1, 3.1, 3.2, 3.5, 3.6, 4.1, 4.3	1.1 - 1.4 2.1 – 2.3 3.1 – 3.6 4.1 – 4.3	
Listening	15	-	15	30
Reading	-	15	15	30
Speaking	15	-	5	20
Writing	-	15	5	20
Weighting	30	30	40	100

OUTCOMES

1. Exchange information, opinions and experiences in Japanese

- 1.1 uses a range of strategies to maintain communication
- 1.2 conveys information appropriate to context, purpose and audience
- 1.3 exchanges and justifies opinions and ideas
- 1.4 reflects on aspects of past, present and future experience

2. Express ideas through the production of original texts in Japanese

- 2.1 applies knowledge of language structures to create original text #
- 2.2 composes informative, descriptive, reflective, persuasive or evaluative texts appropriate to context, purpose and/or audience
- 2.3 structures and sequences ideas and information

3. Analyse, process and responds to texts that are in Japanese

- 3.1 conveys the gist of texts and identifies specific information
- 3.2 summarises the main ideas
- 3.3 identifies the tone, purpose, context and audience

3.4 draws conclusions from or justifies an opinion

3.5 interprets, analyses and evaluates information

3.6 infers points of view, attitudes or emotions from language or context

4. Understand aspects of the language and culture of Japanese-speaking communities

4.1 recognises and employs language appropriate to different social contexts

4.2 identifies values, attitudes and beliefs of cultural significance

4.3 reflects upon significant aspects of language and culture

written or spoken texts created by students incorporating their own ideas

LEGAL STUDIES

Assessment Schedule

	Task 1	Task 2	Task 3	Syllabus Weighting %
Nature of task	In-class extended response The Legal System	Research task with an in-class response Law in Practice	Yearly Examination	
Task timing	Term 1, Week 9	Term 2, Week 6	Term 3, Weeks 9-10	
Outcomes assessed	P3, P4, P8, P9	P5, P7, P8, P9	P1, P2, P6, P9, P10	
Knowledge and understanding of course content	7.5	10	22.5	40
Analysis and evaluation	7.5	10	2.5	20
Inquiry and research	7.5	10	2.5	20
Communication of legal information, ideas and issues in appropriate forms	7.5	10	2.5	20
Weighting	30	40	30	100

OUTCOMES

- P 1** identifies and applies legal concepts and terminology
- P 2** describes the key features of Australian and international law
- P 3** describes the operation of domestic and international legal systems
- P 4** discusses the effectiveness of the legal system in addressing issues
- P 5** describes the role of law in encouraging cooperation and resolving conflict, as well as initiating and responding to change
- P 6** explains the nature of the interrelationship between the legal system and society
- P 7** evaluates the effectiveness of the law in achieving justice
- P 8** locates, selects and organises legal information from a variety of sources including legislation, cases, media, international instruments and documents
- P 9** communicates legal information using well-structured responses
- P 10** accounts for differing perspectives and interpretations of legal information and issues

MATHEMATICS ADVANCED

Assessment Schedule

	Task 1	Task 2	Task 3	
Nature of task	Class Test Topics: MA-F1	In-Class Task Topic: MA-F1, T1, E1, C1	Yearly Examination Topics: MA-F1, T1, T2, C1, E1, S1	Syllabus Weighting %
Task timing	Term 1, Weeks 10	Term 2, Weeks 7-8	Term 3, Weeks 9-10	
Outcomes assessed	MA11.1 MA11.2	MA11.1 - MA11.6	MA11.1 – MA11.7	
Understanding, fluency and communicating	15	15	20	50
Problem solving, reasoning and justification	15	15	20	50
Weighting	30	30	40	100

OUTCOMES

- MA11.1** uses algebraic and graphical techniques to solve, and where appropriate, compare alternative solutions to problems
- MA11.2** uses the concepts of functions and relations to model, analyse and solve practical problems
- MA11.3** uses the concepts and techniques of trigonometry in the solution of equations and problems involving geometric shapes
- MA11.4** uses the concepts and techniques of periodic functions in the solutions of trigonometric equations or proof of trigonometric identities
- MA11.5** interprets the meaning of the derivative, determines the derivative of functions and applies these to solve simple practical problems
- MA11.6** manipulates and solves expressions using the logarithmic and index laws, and uses logarithms and exponential functions to solve practical problems
- MA11.7** uses concepts and techniques from probability to present and interpret data and solve problems in a variety of contexts, including the use of probability distributions
- MA11.8** uses appropriate technology to investigate, organise, model and interpret information in a range of contexts
- MA11.9** provides reasoning to support conclusions which are appropriate to the context

MATHEMATICS EXTENSION 1

Assessment Schedule

	Task 1	Task 2	Task 3	
Nature of task	Class Test Topics: ME-A1	In-Class Task Topics: ME-F1, T1	Yearly Examination Topics: ME-A1, F1, F2, C1, T1	Syllabus Weighting %
Task timing	Term 1, Weeks 7	Term 2, Weeks 8-9	Term 3, Weeks 9-10	
Outcomes assessed	ME11.5	ME11.1 ME11.2, ME11-3	ME11.1 – ME11.5	
Understanding, fluency and communicating	15	15	20	50
Problem solving, reasoning and justification	15	15	20	50
Weighting	30	30	40	100

OUTCOMES

- ME11.1** uses algebraic and graphical concepts in the modelling and solving of problems involving functions and their inverses
- ME11.2** manipulates algebraic expressions and graphical functions to solve problems
- ME11.3** applies concepts and techniques of inverse trigonometric functions and simplifying expressions involving compound angles in the solution of problems
- ME11.4** applies understanding of the concept of a derivative in the solution of problems, including rates of change, exponential growth and decay and related rates of change
- ME11.5** uses concepts of permutations and combinations to solve problems involving counting or ordering
- ME11.6** uses appropriate technology to investigate, organise and interpret information to solve problems in a range of contexts
- MA11.7** communicates making comprehensive use of mathematical language, notation, diagrams and graphs

MATHEMATICS STANDARD

Assessment Schedule

	Task 1	Task 2	Task 3	Syllabus Weighting %
Nature of task	Class Test Topics: MS-F1, S1, A1	In-Class Task Topic: MS-A1, F1, M1	Yearly Examination Topics: MS-F1, F2, S1, S2, M1, M2, A1, A2	
Task timing	Term 1, Weeks 7	Term 2, Weeks 8-9	Term 3, Weeks 9-10	
Outcomes assessed	MS11.1 MS11.2 MS11.5, MS11.6, MS11.7	MS11.2 MS11.3 MS11.4, MS11.5, MS11.6	MS11.1 – MS11.10	
Understanding, fluency and communicating	15	15	20	50
Problem solving, reasoning and justification	15	15	20	50
Weighting	30	30	40	100

OUTCOMES

- MS11.1** uses algebraic and graphical techniques to compare alternative solutions to contextual problems
- MS11.2** represents information in symbolic, graphical and tabular form
- MS11.3** solves problems involving quantity measurement, including accuracy and the choice of relevant units
- MS11.4** performs calculations in relation to two-dimensional and three-dimensional figures
- MS11.5** models relevant financial situations using appropriate tools
- MS11.6** makes predictions about everyday situations based on simple mathematical models
- MS11.7** develops and carries out simple statistical processes to answer questions posed
- MS11.8** solves probability problems involving multistage events
- MS11.9** uses appropriate technology to investigate, organise and interpret information in a range of contexts
- MS11.10** justifies a response to a given problem using appropriate mathematical terminology and/or calculations

MODERN HISTORY

Assessment Schedule

	Task 1	Task 2	Task 3	Syllabus Weighting %
Nature of task	Source Analysis & use of own knowledge	Historical investigation	Yearly Examination	
Task timing	Term 1, Week 8	Term 2, Week 6	Term 3, Weeks 9-10	
Outcomes assessed	MH11-1, MH11-2, MH11-6, MH11-7	MH11-8, MH11-9, MH11-10	MH11-3, MH11-4, MH11-5, MH11-6, MH11-10	
Knowledge and understanding of course content	15	-	25	40
Historical skills in the analysis and evaluation of sources and interpretations	15	-	5	20
Historical inquiry and research	-	20	-	20
Communication of historical understanding in appropriate forms	-	15	5	20
Weighting	30	35	35	100

OUTCOMES

- MH11.1** describes the nature of continuity and change in the modern world
- MH11.2** proposes ideas about the varying causes and effects of events and developments
- MH11.3** analyses the role of historical features, individuals, groups and ideas in shaping the past
- MH11.4** accounts for the different perspectives of individuals and groups
- MH11.5** examines the significance of historical features, people, ideas, movements, events and developments of the modern world
- MH11.6** analyses and interprets different types of sources for evidence to support an historical account or argument
- MH11.7** discusses and evaluates differing interpretations and representations of the past
- MH11.8** plans and conducts historical investigations and presents reasoned conclusions, using relevant evidence from a range of sources
- MH11.9** communicates historical understanding, using historical knowledge, concepts and terms, in appropriate and well-structured forms
- MH11.10** discusses contemporary methods and issues involved in the investigation of modern history

MUSIC 1

Assessment Schedule

	Task 1	Task 2	Task 3	Syllabus Weighting %
Nature of task	Topic 1 – Analysis and Aural skills	Topic 2 – Composition & Performance	Yearly Examination	
Task timing	Term 1, Week 9	Term 2, Week 7	Term 3, Weeks 9-10	
Outcomes assessed	P2, P4, P6, P7, P8, P10	P1, P3, P5, P8, P11	P1, P2, P4, P5, P6, P9, P10, P11	
Performance	-	Performance (10)	Performance (15)	25
Composition	-	Composition and arrangement (25)	–	25
Musicology	Analysis (25)	-	-	25
Aural	Aural Skills (10)	-	Written Paper (15)	25
Weighting	35	35	30	100

OUTCOMES

Through activities in performance, composition, musicology and aural, a student:

- P1** performs music that is characteristic of the topics studied
- P2** observes, reads, interprets and discusses simple musical scores characteristic of topics studied
- P3** improvises and creates melodies, harmonies and rhythmic accompaniments for familiar sound sources reflecting the cultural and historical contexts studied
- P4** recognises and identifies the concepts of music and discusses their use in a variety of musical styles
- P5** comments on and constructively discusses performances and compositions
- P6** observes and discusses concepts of music in works representative of the topics studied
- P7** understands the capabilities of performing media, explores and uses current technologies as appropriate to the topics studied
- P8** identifies, recognises, experiments with and discusses the use of technology in music
- P9** performs as a means of self-expression and communication
- P10** demonstrates a willingness to participate in performance, composition, musicology and aural activities

MUSIC 2

Assessment Schedule

	Task 1	Task 2	Task 3	Syllabus Weighting %
Nature of task	Performance and Aural Skills	Composition portfolio	Musicology/ Aural Examination	
Task timing	Term 1, Week 9	Term 2, Week 9	Term 3, Weeks 9-10	
Outcomes assessed	P1, P2, P5, P8, P10, P11, P12	P2, P3, P4, P5, P6, P11, P12	P2, P5, P6, P7, P9, P11, P12	
Performance	Mandatory topic Baroque Period performance (25)	-	-	25
Composition	-	Mandatory topic Classical Period portfolio (25)	-	25
Musicology		Composition analysis (10)	Written Paper (15)	25
Aural	Aural Skills (10)	-	Written Paper (15)	25
Weighting	35	35	30	100

OUTCOMES

Through activities in performance, composition, musicology and aural, a student:

- P1** confidently performs repertoire, that reflects the mandatory and additional topics, both as a soloist and as a member of an ensemble
- P2** demonstrates an understanding of the concepts of music, by interpreting, analysing, discussing, creating and notating a variety of musical symbols characteristically used in the mandatory and additional topics
- P3** composes, improvises and analyses melodies and accompaniments for familiar sound sources in solo and/or small ensembles
- P4** creates, improvises and notates music which is representative of the mandatory and additional topics and demonstrates different social, cultural and historical contexts
- P5** analyses and discusses compositional processes with stylistic, historical, cultural and musical considerations
- P6** discusses and evaluates music making constructive suggestions about performances and compositions
- P7** observes and discusses in detail the concepts of music in works representative of the mandatory and additional topics
- P8** understands the capabilities of performing media, explores and uses current technologies as uses current technologies as studied
- P9** identifies, recognises, experiments with, and discusses the use of technology in music
- P10** performs as a means of self-expression and communication
- P11** demonstrates a willingness to participate in performance, composition, musicology and aural activities
- P12** demonstrates a willingness to accept and use constructive criticism

PHYSICS

Assessment Schedule

	Task 1	Task 2	Task 3	Syllabus Weighting %
Nature of task	Investigations	Depth Study	Yearly Examination	
Task timing	Term 1, Week 8	Term 2, Week 2	Term 3, Weeks 9-10	
Outcomes assessed	PH 11.3 – PH 11.8	PH11.1 – PH11.7 PH11.9	PH11.1 – PH11.11	
Skills in working scientifically	25	25	10	60
Knowledge and understanding of course content	5	5	30	40
Weighting	30	30	40	100

OUTCOMES

- PH11.1** develops and evaluates questions and hypotheses for scientific investigation
- PH11.2** designs and evaluates investigations in order to obtain primary and secondary data and information
- PH11.3** conducts investigations to collect valid and reliable primary and secondary data and information
- PH11.4** selects and processes appropriate qualitative and quantitative data and information using a range of appropriate media
- PH11.5** analyses and evaluates primary and secondary data and information
- PH11.6** solves scientific problems using primary and secondary data, critical thinking skills and scientific processes
- PH11.7** communicates scientific understanding using suitable language and terminology for a specific audience or purpose
- PH11.8** describes and analyses motion in terms of scalar and vector quantities in two dimensions and makes quantitative measurements and calculations for distance, displacement, speed velocity and acceleration
- PH11.9** describes and explains events in terms of Newton's Laws of Motion, the law of conservation of momentum and the law of conservation of energy
- PH11.10** describes and explains events in terms of Newton's Laws of Motion, the law of conservation of momentum and the law of conservation of energy
- PH11.11** explains and quantitatively analyses electric fields, circuitry, and magnetism

SOCIETY AND CULTURE

Assessment Schedule

	Task 1	Task 2	Task 3	Syllabus Weighting %
Nature of task	Research report	Mini PIP (hand in task)	Yearly Examination	
Task timing	Term 1, Week 8	Term 2, Week 10	Term 3, Weeks 9-10	
Outcomes assessed	P1, P3, P9, P10	P1, P2, P5, P7, P8, P9	P1 – P7 P9, P10	
Knowledge and understanding of course content	15	15	20	50
Application and evaluation of social and cultural research methods	-	20	10	30
Communication of information, ideas and issues in appropriate forms	10	5	5	20
Weighting	25	40	35	100

OUTCOMES

- P1** identifies and applies social and cultural concepts
- P2** describes personal, social and cultural identity
- P3** identifies and describes relationships and interactions within and between social and cultural groups
- P4** identifies the features of social and cultural literacy and how it develops
- P5** explains continuity and change and their implications for societies and cultures
- P6** differentiates between social and cultural research methods
- P7** selects, organises and considers information from a variety of sources for usefulness, validity and bias
- P8** plans and conducts ethical social and cultural research
- P9** uses appropriate course language and concepts suitable for different audiences and contexts
- P10** communicates information, ideas and issues using appropriate written, oral and graphic forms

SOFTWARE ENGINEERING

Assessment Schedule

	Task 1	Task 2	Task 3	Syllabus Weighting %
Nature of task	Programming methodology and planning	Programming portfolio and research task	Mechatronic programming project	
Task timing	Term 2, Week 2	Term 3, Week 4	Term 3, Weeks 9-10	
Outcomes assessed	SE-11-01, SE-11-02, SE-11-06, SE-11-07, SE-11-08	SE-11-02, SE-11-03, SE-11-04, SE-11-05, SE-11-08	SE-11-01, SE-11-06, SE-11-07, SE-11-08, SE-11-09	
Knowledge and understanding of course content	15	15	20	50
Knowledge and skills in the practical application of the content	15	15	20	50
Weighting	30	30	40	100

OUTCOMES

- SE11.01** describes methods used to plan, develop and engineer software solutions
- SE11.02** explains how structural elements are used to develop programming code
- SE11.03** describes how current hardware, software and emerging technologies influence the development of software engineering solutions
- SE11.04** applies safe and secure practices to collect, use and store data
- SE11.05** describes the social, ethical and legal implications of software engineering on the individual, society and the environment
- SE11.06** applies tools and resources to design, develop, manage and evaluate software
- SE11.07** implements safe and secure programming solutions
- SE11.08** applies language structures to refine code
- SE11.09** manages and documents the development of a software project

SPORT, LIFESTYLE AND RECREATION STUDIES

Assessment Schedule

	Task 1	Task 2	Task 3	Syllabus Weighting %
Nature of task	Fitness – Training Program	Outdoor recreation – Experience Plan	Yearly Examination	
Task timing	Term 1, Week 9	Term 2, Week 7	Term 3, Weeks 9-10	
Outcomes assessed	3.2, 3.3	1.3, 2.2, 4.1	1.2, 1.4, 1.5, 2.1, 3.1	
Knowledge and understanding of course content	20	20	10	50
Practical skill	20	10	20	50
Weighting	40	30	30	100

OUTCOMES

- 1.1 applies the rules and conventions that relate to participation in a range of physical activities
- 1.2 explains the relationship between physical activity, fitness and healthy lifestyle
- 1.3 demonstrates ways to enhance safety in physical activity
- 1.4 investigates and interprets the patterns of participation in sport and physical activity in Australia
- 1.5 describes administrative procedures that support successful performance outcomes
- 2.1 explains the principles of skill development and training
- 2.2 analyses the fitness requirements of specific activities
- 2.3 selects and participates in physical activity's that meet individual needs, interests and abilities
- 2.4 describes how societal influences impact on the nature of sport in Australia
- 2.5 describes the relationship between anatomy, physiology and performance
- 3.1 selects appropriate strategies and tactics for success in a range of movement contexts
- 3.2 designs programs that respond to performance needs
- 3.3 measures and evaluates physical performance capacity
- 4.1 plans strategies to achieve performance goals
- 4.2 demonstrates leadership skills and a capacity to work cooperatively in a movement context
- 4.3 makes strategic plans to overcome the barriers to personal and community health
- 4.4 demonstrates competence and confidence in movement contexts
- 4.5 recognises the skills and abilities required to adopt roles that support health, safety and physical activity

TEXTILES AND DESIGN

Assessment Schedule

	Task 1	Task 2	Task 3	Syllabus Weighting %
Nature of task	Communication Techniques portfolio	Preliminary Textiles project	Yearly Examination	
Task timing	Term 2, Week 2	Term 3, Week 7	Term 3, Weeks 9-10	
Outcomes assessed	P2.1, P2.3, P3.2, P4.1	P1.1, P1.2, P2.2, P2.3, P4.1	P1.1, P1.2, P3.1, P3.2, P5.1, P6.1	
Knowledge and understanding of course content	10	10	30	50
Knowledge and skills in the design, manufacture and management of textiles projects	10	30	10	50
Weighting	20	40	40	100

OUTCOMES

- P 1.1** describes the elements and principles of design and uses them in a variety of applications
- P 1.2** identifies the functional and aesthetic requirements and features of a range of textiles items
- P 2.1** demonstrates the use of a variety of communication skills, including computer-based technology
- P 2.2** develops competence in the selection and use of appropriate manufacturing techniques and equipment
- P 2.3** manages the design and manufacture of textile projects
- P 3.1** identifies properties of a variety of fabrics, yarns and fibres for end-uses
- P 3.2** justifies the selection of fabrics, yarns and fibres for end-uses
- P 4.1** identifies and selects textiles for specific end-uses based on analysis of experimentation
- P 5.1** examines the status of the Australian Textile, Clothing, Footwear and Allied Industries within the global context
- P 5.2** investigates the range of career options in design, consumerism, manufacturing and retail sectors of the Australian Textile, Clothing, Footwear and Allied Industries
- P 6.1** identifies and appreciates the factors that contribute to the quality and value of textiles in society

VISUAL ARTS

Assessment Schedule

	Task 1	Task 2	Task 3	
Nature of task	Submission of a Body of Work and Visual Arts Process Diary – artists practice / case study	Submission of a Body of Work and Visual Arts Process Diary – artists practice / case study	Yearly Examination	Syllabus Weighting %
Task timing	Term 1, Weeks 10 & 11	Term 2, Weeks 9 & 10	Term 3, Weeks 9-10	
Outcomes assessed	P1 – P10	P1 – P10	P7 – P10	
Artmaking	25	25	-	50
Art Criticism and Art History	10	10	30	50
Weighting	35	35	30	100

OUTCOMES		
Artmaking	P1	explores the conventions of practice in artmaking
	P2	explores the roles and relationships between the concepts of artist, artwork, world and audience
	P3	identifies the frames as the basis of understanding expressive representation through the making of art
	P4	investigates subject matter and forms as representations in artmaking
	P5	investigates the ways of developing coherence and layers of meaning in the making of art.
	P6	explores a range of material techniques in ways that support artistic intentions
Art criticism and Art History	P7	explores the conventions and practice in art criticism and art history
	P8	explores the roles and relationships between concepts of artist, artwork, world and audience through critical and historical investigations of art
	P9	identifies the frames as the basis of exploring different orientations to critical and historical investigations of art
	P10	explores ways in which significant art histories, critical narratives and other documentary accounts of the visual arts can be constructed