



ORAN PARK HIGH SCHOOL

STUDENT & PARENT INFORMATION BOOKLET 2026



Table of Contents

Principal’s Message	3
Contact Details	4
About Our School	5
School Term Dates for 2026	5
Bell Times	7
School Map	8
Wellbeing	10
School Support Teams	12
Student Leadership	13
Merit System - (TRAK Points)	15
School Uniform	16
Sport	20
School-wide expectations and rules	21
OPHS Parent Charter	25
Attendance	26
Homework	27
School Library	29
Disability Support Unit	30
Curriculum	31
Class Organisation	32
School Contributions	32
School Bytes	35
Working Together with the Community	35
Canteen Menu	37
Frequently Asked Questions	39

Principal's Message

Dear students and families

It is my great honour to be the foundation principal of Oran Park High School. The school, which opened its' doors to students for the first time in 2020, is visually stunning and beautifully designed with a variety of different future-focussed learning and social spaces. However, as the student population has grown over our first few years, we are constantly reminded that great schools are not just about modern buildings but also about the people that work and learn within those buildings.

Oran Park High School is a great school because we have a highly skilled and talented staff who are passionate about working with the children of this community, who they will help nurture to be thoughtful, respectful and motivated young adults, and who are fully supported in this endeavour by our students' parents and carers. And it is also a great school because everything we do is grounded in our TRAK values of Teamwork, Respect, Achievement and Kindness, as well as the high expectations and mutually respectful relationships that position it at the heart of a new and flourishing community.

So finally, as we grow and develop over the coming years, we will challenge ourselves every day to live out the spirit and intent of our motto so that we are truly 'Partners in Learning'.

Welcome to Oran Park High School.

Brad Mitchell – Principal

'Partners in Learning'



Contact Details

School

Address	1 Podium Way, Oran Park 2570
Telephone	(02) 4634 7700
Email	oranpark-h.school@det.nsw.edu.au
Website	www.oranpark-h.schools.nsw.gov.au
Facebook	@OranPark HS
Instagram	@oranpark_highschool
Office hours	8:30am – 3:30pm
Parent/student portal	https://ophs.sentral.com.au/portal2/

Education Directorate

Director Educational Leadership	Chad Bliss, Campbelltown Office - (02) 4633 2700
--	--

Transport

Bus company	Transit Systems - (02) 8118 7102
--------------------	----------------------------------

The School Student Transport Scheme (SSTS) gives eligible school students free or subsidised travel between home and school on NSW public transport. Eligibility relies on the following:

- living more than 2.0km in a straight distance from home
- walking distance from home to school is 2.9km or further

If you don't qualify for free travel to and from school, you may be eligible to purchase a School Term Bus Pass.

<https://transportnsw.info/tickets-opal/ticket-eligibility-concessions/school-student-travel>

About Our School

Oran Park High School is built on Dharawal land. Prior to construction the land was used initially for farming and more recently the Oran Park Raceway which was operational from February 1962 until its closure in January 2010.

The first intake of students occurred at the beginning of the school year in 2020 with Year 7 and Year 8 students only. 2024 will see a new cohort of Year 7 students begin, therefore extending our school to Years 7, 8, 9, 10, 11 & 12 students. Our students are largely drawn from our partner primary school Oran Park Public School and Barramurra Public School.

Our school also hosts 6 support classes whose students are enrolled through a regional placement panel.

Our school colours are black, white and teal. The school crest was designed by Working Images in consultation with Mr Brad Mitchell founding Principal and a working party of parents and community members.

School Term Dates for 2026






Term 1	10 weeks	Friday 27 January – 2 April All students begin Monday 2 February
Term 2	11 weeks	Monday 20 April – Friday 3 July All students begin Wednesday 22 April
Term 3	10 weeks	Monday 20 July – Friday 25 September All students begin Tuesday 21 July
Term 4	10 weeks	Monday 12 October – Thursday 17 December All students begin Tuesday 13 October

Logo

Oran Park High School has established a meaningful and connected logo and school motto that is inclusive of the community within which we live and the vision we have for a learning partnership.



Visual elements of the logo consist of:

Symbol	Meaning
	<p>Star</p> <p>Represents guidance, the highest goals and aspirations, a leading light and navigational device</p>
	<p>Star (indigenous form)</p> <p>Represents guidance and a navigational device</p>
	<p>Water</p> <p>Represents life, flow and landscape and has relevance to Oran Park within the upper Nepean water catchment region</p>
	<p>Hills/land</p> <p>Represents the connection to the indigenous people in the Oran Park region, the early settlement of NSW and Cow-pastures</p>
	<p>Flora</p> <p>Symbolises growth and connection to the environment. This form loosely representative of the waratah which is the New South Wales state floral emblem.</p>

Bell Times

Our timetable cycle is two weeks (fortnight). Student timetables will be shown as Week A and B.

In 2026, Term 1 will start for students on Monday 2 February and will start on Week B.

All other Terms will also start on Week A.

Period	Monday	Tuesday	Wednesday	Thursday	Friday
TRAK Roll Call	8:50am	8:50am	8:50am	8:50am	8:50am
Period 1	9:00am	9:00am	9:00am	9:00am	9:00am
Period 2	10:00am	10:00am	10:00am	10:00am	10:00am
Break 1	11:00am	11:00am	11:00am	11:00am	11:00am
Period 3	11:30am	11:30am	11:30am	11:30am	11:30am
Period 4	12:30pm	12:30pm	12:30pm	12:30pm	12:30pm
	1:30pm Early Leave Year 10	1:30pm Early Leave Years 11-12			
Break 2	1:30pm	1:30pm	1:30pm	1:30pm	1:30pm
Period 5	2:00pm	2:00pm	2:00pm	2:00pm	2:00pm

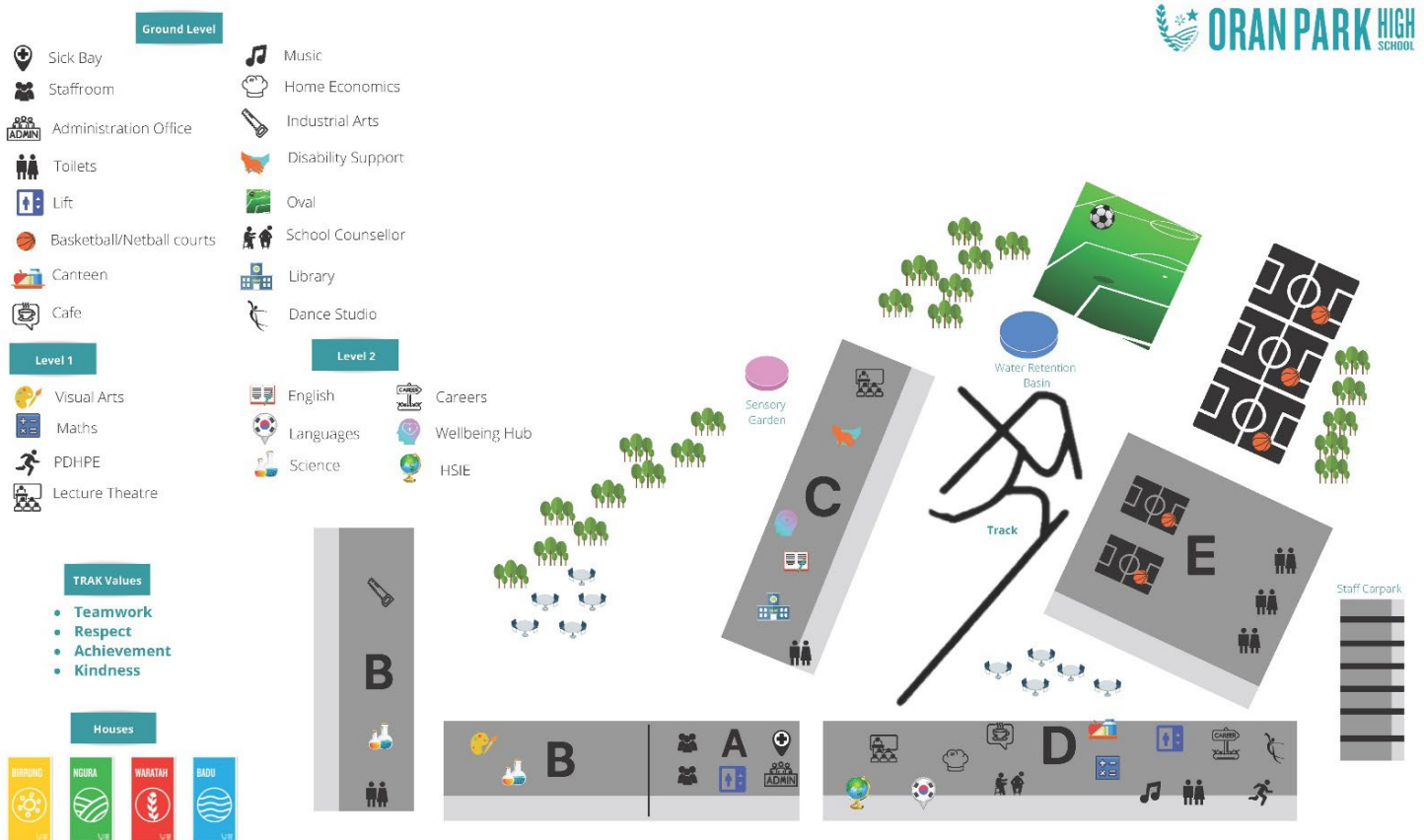
Notes on bell times:

- All Year 10 Students have early leave on **Mondays** at 1:30pm
- All Year 11 & 12 Students have early leave on **Tuesdays** at 1:30pm
 - *Students in Years 10-12 with **unresolved N-Warnings will lose their early leave** pass and will be required to attend Senior Study Support at school on their early day until 3:00pm.*
- Some senior students will have timetabled lessons before or after school for classes including extension subjects, languages subjects and TVET courses.
- The recommended arrival time for students is no later than 8:40am. Students that arrive late are required to sign into school via the school office.
- Students wishing to leave early need to have parent/guardian permission and obtain an early leaver pass from the school office before 9am.

School Map

Oran Park High School is located at 1 Podium Way, Oran Park. Oran Park Public School is adjacent to the high school site, located on South Circuit, Oran Park. The high school and primary school share the oval at the northern end of the school site.

Block	Level	Purpose
A	Level 0	Administration, First Aid
	Level 1	Lower-level staffroom – Maths, PDHPE, CAPA & TAS
	Level 1.5	Executive level – Principal, Deputies and Administration
	Level 2	Upper-level staffroom – English, Science, Learning Support, HSIE & Languages
B	Level 1	TAS, Visual Arts, student toilet block
	Level 2	Science
C	Level 0	Disability Support Unit, Mathematics
	Level 1	Mathematics
	Level 2	Library, English
D	Level 0	Performance Studio, Fitness Studio, Music, TAS, Café, Canteen, student toilet block
	Level 1	PDHPE, HSIE, Languages
	Level 2	HSIE, Careers, Senior Learning Centre
E	Hall	Hall, changerooms, toilets



Staff List 2025

SENIOR EXECUTIVE	
Principal	Brad Mitchell
Deputy Principal	Linda Vella
Deputy Principal	Karen Andrews
Deputy Principal	Kylie Lowe
Deputy Principal	Constance Gartside

HEAD TEACHERS	
English	Ben Murray
Mathematics	Paula Liu
Science	Elizabeth Colagiuri
PDHPE	Boris Bratic
PDHPE	Melanie Scott
TAS	Josh Symons
CAPA	Antonella Verter
HSIE	Rachel Berry
HSIE	Fleur Farah
Disability Support	Kelly Whitehead
Wellbeing	Kristie Harris
Wellbeing	Omar Sabih
Administration	Jose Villanueva
Teaching & Learning	Laurie-Anne Hudson
Teaching & Learning	Jayden Parkes
Secondary Studies	Erica Taylor
Learning Support	Rhianna Kalemén

YEAR ADVISORS	
Year 7	Rianna Dayoub
Year 7	Christopher Manuel
Year 8	Sarah Krepp
Year 8	Joseph Mansour
Year 9	Rifat Sabah
Year 9	Claudia Jones
Year 10	Sheridan Boyd
Year 10	Amanda Harding
Year 11	Callie Shea
Year 11	Josh Sayers
Year 12	Chris Ive
Year 12	Peta Moran

STUDENT SERVICES & CONTACTS	
Business Manager	Kylee Hughes
SAM	Vicki Maxwell
CLO	Kelly Austin
Student Support Officer	Juan Mamblona
Student Support Officer	Emma Harold
Counsellor	Leelum Moodley
Student Leadership	Belinda Vaccaro
Student Leadership	Rachael Dimond
Careers Advisor	Catherine Myers
Careers Advisor	Regan Schell

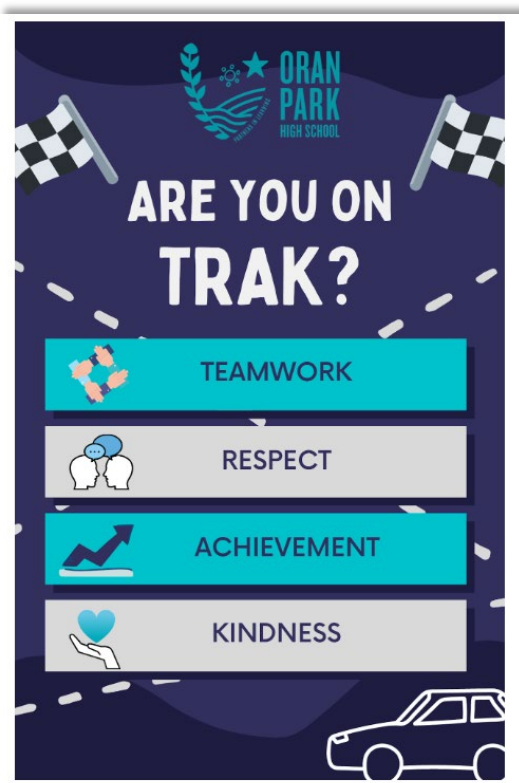
For a full list of staff, click [here](#)

Wellbeing

The Wellbeing Team consists of staff across the school and can include the Year Advisors, Deputy Principals, Head Teachers, School Counsellors, School Support Officers and Learning Support Teachers.

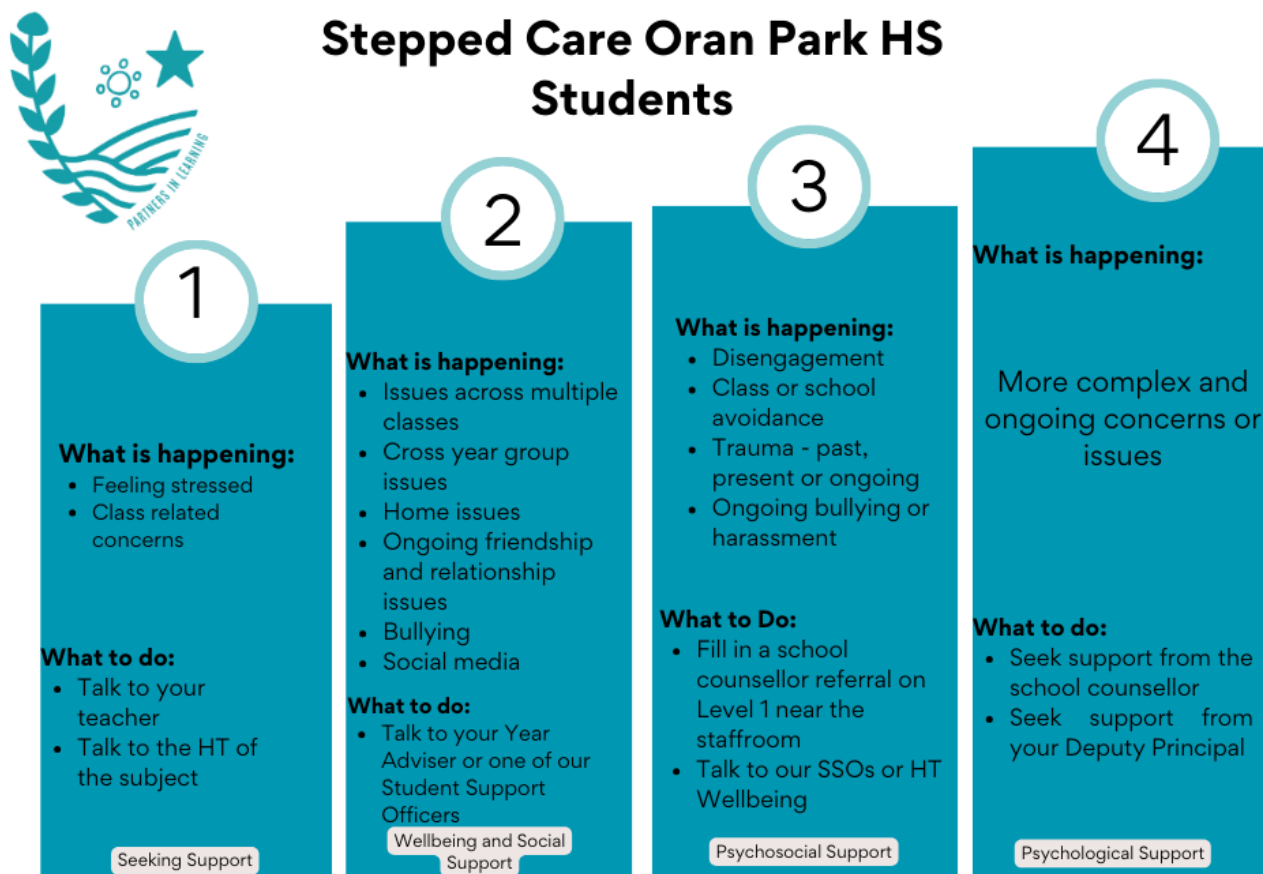
The role of the Wellbeing Team is to:

- To be the first point of contact for any wellbeing related needs for your child
- support the wellbeing needs of students at Oran Park High School
- seek solutions to wellbeing issues, both general and individual
- refer wellbeing needs to specialist services or agencies, where appropriate
- review, construct and implement wellbeing policies
- coordinate activities and implement programs to support the wellbeing needs of students, aligned to the school's TRAK values
- provide ongoing evaluation of school-based wellbeing policies and procedures
- communicate with and provide guidance for staff
- initiate and coordinate staff development in wellbeing strategies and procedures
- communicate with parents regarding wellbeing issues
- monitor student progress through semester reports, progress reports and the online system
- coordinate and develop the Oran Park High School TRAK program



Stepped care

Our school follows a stepped care model to supporting wellbeing. Above is a guide for students and parents to ensure that wellbeing needs are catered for in the best possible way.



Increasing levels of support

Classroom teacher Student Support Officer HT Wellbeing Counsellor Deputy Principal

The Role of School Counsellors

School counsellors are employed by the Department of Education to assist students with a variety of educational, social and emotional issues. They can provide a variety of services, including individual psychological assessment, counselling, educational assessments and assistance for students with additional needs.

School Counsellors work closely with the School Executive, Year Advisors, Careers Advisor, the Learning Support Team and other staff to help individual students achieve their goals. Students needing support outside of school hours can contact Kids Helpline 1800 551 800.

School Support Teams

Learning Support

The Learning Support Team consists of specialist teachers whose main function is to assist staff and support students' individual learning needs. At Oran Park High School, we have Learning and Support Teachers, English as an Additional Language/Dialect (EALD) teachers and School Learning Support Officers (SLSO). Each staff member brings with them a wealth of knowledge and experience that benefits the wellbeing and learning of students in their care.

The Learning Support Team also assist in the transition of students with disability or additional needs including, primary to high school transition, cross-school transition and school to work transition. In addition to this, team members work with teachers across the school with a wide range of external agencies and specialists, to best support student learning needs.

Aboriginal Education

Oran Park High School is committed to working in partnership to provide an environment with strong supporting structures that empower and enable our Aboriginal students to attain personal success and develop greater understanding of Aboriginal and Torres Strait Islander knowledge, histories and cultures for all students.

Our vision is one in which all Aboriginal and Torres Strait Islander children and young people achieve their full learning potential, are empowered to shape their own futures, and are supported to embrace their culture and identity. We will develop and maintain strong relationships with local communities and stakeholders, working in partnership with the Narellan Aboriginal Education Consultative Group to ensure high expectations and support for our Aboriginal students to assist them to be successful learners.

We welcome Aboriginal and Torres Strait Islander family members, parents and community members to our school so that we can get to know each other, learn about the local Aboriginal community and develop shared goals.

All Aboriginal and Torres Strait Islander students will have Personalised Learning Pathways (PLPs) created each year. These are an effective tool for increasing Aboriginal student engagement. PLPs will be used to support improved learning outcomes and educational aspirations and will be developed in partnership with Aboriginal students, their parents and teachers.

All students will have opportunities to understand the concepts of Country and Place, People, Culture and Identity. They will explore the experiences and achievements of Aboriginal people in historical and social contexts and the links between cultural expression, language and spirituality.

Multicultural Education

Oran Park High School is a multicultural school community that is committed to ensuring that all students value their own and other cultural identities. To assist students whose first language is other than English we have an English as an Additional Language/Dialect (EAL/D) trained staff member to assist these students to work at levels comparable to or better than their school and state cohort.

Student Leadership

Oran Park High School is committed to students being partners in the decision-making process and having a voice in all aspects of school life. Students can nominate themselves to be considered for a position in the leadership team by completing an application form during Term 4. Successful applicants will be chosen by Year Advisors and Executive Staff based on their application and their exemplary record of consistently demonstrating TRAK values.

- Student leaders hold their position for one year after which time they may opt to run again.
- Student leaders will be expected to organise and participate in initiatives throughout their term in each of the following areas; Community Engagement, School Engagement, Environment and Sustainability, Sport and Physical Activity, TRAK and Wellbeing and Technology and Innovation.
- Student leaders are encouraged to listen to their peers' opinions, raise suggestions at meetings, and provide regular updates of their events at assemblies, in the school newsletter and social media platforms.
- Students who have been elected to the leadership team will be placed into a leadership TRAK roll call class and will be responsible for various roles within the school including hosting school assemblies.

House System





Oran Park High School's house system is about encouraging participation in all aspects of school life. The aim of the house system is to foster school spirit.

Our house system is known as the **Grand Prix House Championship**.

The house system encompasses **all activities** the school offers across three areas of schooling: academic, sporting and extra-curricular. Rewards or participation in each area gains points for your house. Each school activity is given a point value to reflect the level of the award or event.

Each house will have house patrons who will assist and provide support to each house. Their role will be to encourage students to participate in all school activities. All students will be part of the house challenge. Students can support their house by involvement in all aspects of school life.

The houses have been named in connection with Dharawal land on which the school is built and the school emblem that was created to be reflective of our school community.

House	Surnames	Meaning	Symbol
Birrung (yellow)	B, C, I, O, P, U, V, Z	Aboriginal name for the star. In relation to the school emblem, it represents guidance and a navigational device	
Ngura (green)	D, K, N, S	Aboriginal name for place/country. In relation to the school emblem, it represents the connection to aboriginal people in the Oran Park region, the early settlement of NSW and the Cow-pastures.	
Waratah (red)	A, H, L, M Q, X, Y	The NSW state floral emblem. In relation to the school emblem, it represents growth and connection to the environment.	
Badu (blue)	E, F, G, J R, T, W	Aboriginal name for water. In relation to the school emblem, it represents life, flow and landscape and has relevance to Oran Park within the upper Nepean water catchment region.	

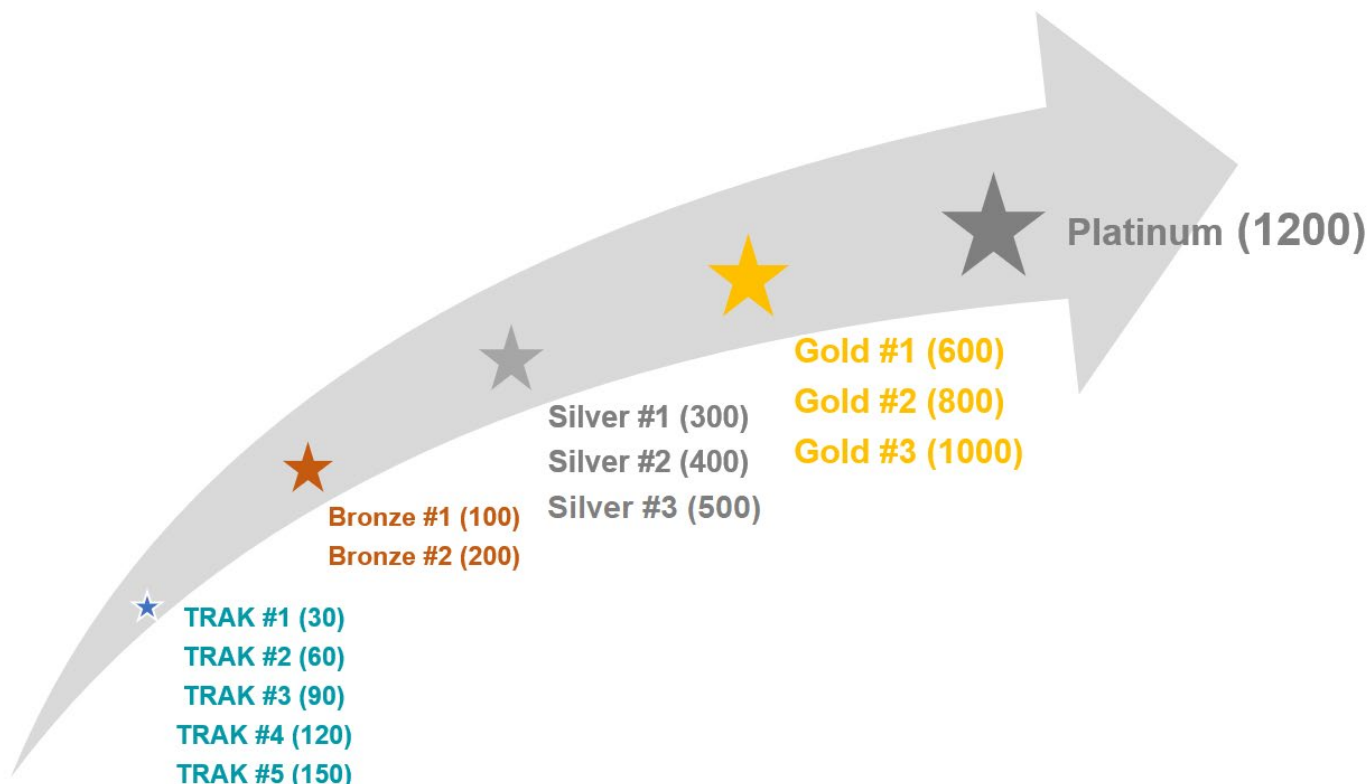
Merit System - (TRAK Points)

At Oran Park High School our core values are TRAK:

- T – Teamwork
- R – Respect
- A – Achievement
- K – Kindness

Students who are **on TRAK** are working well with others, are considerate learners and citizens, try their best and treat everyone with kindness. Teachers reinforce positive behaviour, responsibility, effort and achievement using the merit system.

Students will be awarded points through participation in all aspects of school life and by being **on TRAK**. These points accumulate and contribute to a student's individual merit level (shown below) and the Grand Prix House Championship. Additionally, special "Reward Days" are held throughout the year for students reaching set levels.



Oran Park High School Merit System

School Uniform

OPHS maintains high expectations for uniform. Full school uniform is to be worn each day, to and from school. All uniform is to be worn as designed and not altered in any way.

Our school uniform has been designed to be inclusive for all students and has options available to cater for cultural dress requirements. Oran Park High School complies with the [Department of Education uniform policy](#)

Students are only permitted to wear the Sports uniform to school on days they have practical PE and Sport lessons. Regular uniform is to be worn at all other times.

OPHS Uniform Options	Junior Uniform	Senior Uniform
Skirt	OPHS Junior check skirt	OPHS Senior teal skirt
Pants	Black tailored shorts or long black tailored pants (no tracksuit pants, leggings or yoga pants allowed)	
Shirt	Long or short sleeve shirt with OPHS logo. White undershirt (Optional)	Long or short sleeve shirt with OPHS Senior logo. White undershirt (Optional)
Tie	OPHS Junior tie	OPHS Senior tie
Jumper	Teal OPHS jumper	
Jacket	Black OPHS soft shell jacket	
Socks	Plain White OR Plain Black	
Shoes	Fully enclosed hard, black leather lace up shoes	
School Cap	OPHS School cap (optional) however, no other caps will be allowed	
	PE/Sports Uniform	
Tracksuit	OPHS tracksuit pants and/or sports jacket	
Shirt	OPHS Sports Polo Top	
Shorts	OPHS Sports shorts	
Shoes	Lace up sports joggers	

Shoes

All students are to wear **fully enclosed hard, black leather lace up shoes** to and from school each day. For practical PE lessons and sport, students can wear predominantly black or white joggers to school and wear them during these lessons.

Fully enclosed hard, black leather lace up shoes.



MUST be a hard leather upper. A traditional looking school shoe.



Soft leather shoes such as Adidas, Airforce, Converse, Vans, Volleys are **NOT** permitted.

Safety for Practical Lessons

Students MUST wear the correct hard leather shoes in order to participate in practical learning activities such as laboratory or technology lessons due to compliance with WH&S guidelines. Students not wearing correct shoes will be unable to participate in practical lessons and will be set alternative theory-based learning activities.

Not permitted at ANY time

- Hoodies
- Non OPHS Tracksuit pants
- Leggings or yoga pants
- Sandals, open-toe or canvas shoes

Out of Uniform Procedures

If a student is out of uniform, they must bring a note of explanation from their parent/caregiver and obtain a uniform pass from staff before roll call. If students do not have a note, they will be issued a uniform detention. Students who are repeatedly out of uniform without a valid reason, may be unable to represent the school on excursions and/or accept awards at assembly.

Uniform Assistance

- Lowes have layby options to support families
- Student assistance may be available to families experiencing financial hardship. Applications are available from the school administration office.



Additional Uniform Requirements

Item	Requirements
Belts	<ul style="list-style-type: none"> • Plain black belt. No studs or large buckles
Hats	<ul style="list-style-type: none"> • School cap can be worn for sun protection outside only. • Hats are not to be worn reversed. No beanies or berets.
Jewellery options	<ul style="list-style-type: none"> • Watch and simple flat ring, like a signet ring. No large obtrusive/dangerous rings. Not a ring on every finger. • Simple chain (not leather or elastic). No heavy chains, no necklaces, no large dangerous pendants. • Bracelets – one simple. No heavy metal ones. No leather/elastic. • Earrings – studs or sleepers only. Refer to the Deputy Principal if unsure. • Anklets – not to be seen. • For safety reasons facial piercings (nose, lips and eyebrow) are NOT suitable for school.
Nails	<ul style="list-style-type: none"> • Clear or pale colour only. Acrylic nails are not permitted. If in doubt, refer to Deputy Principal.
Make-up	<ul style="list-style-type: none"> • Not to be worn in excessive amounts • No eye shadow or coloured lipstick • No excessive mascara/Fake lashes • No eyeliner
School bags	<ul style="list-style-type: none"> • All students require an appropriate school bag or backpack to carry textbooks and schoolbooks/folders. • School bags should have 2 shoulder straps for safe carrying of materials – single shoulder bags are not recommended. • Handbags / bum bags are not suitable as a school bag. • Carrying folders without a bag is also not suitable. • Additional bags may be used to carry sports uniform and joggers which can be purchased from the office

Sport

Students will be allocated a house in Year 7 that will form part of their sport program. The Year 7, 8, 9 sport programs will consist of integrated sport where students will be placed into teams based on their house group. During sport lessons, teams will play in a round-robin competition against other teams within their sport group. Winning teams will receive house points for their house. The top four teams from each sport group will then compete in a play-off competition to determine the winner of the Integrated Sports Cup.

Teams may change each term to allow for students to develop interpersonal skills with a variety of other students. During sport, students will get the opportunity to practise and be coached in various sports in the lead up to Macarthur Zone Gala Days (Years 7 and 8).

Year 10 students will have choices of recreation sport options (a fee will be charged for external venue, equipment hire and transport costs if needed) and team games for their fortnightly sport. These options and selections will change each term.

Students will have the opportunity to represent the school at Macarthur Zone Carnivals in swimming, cross country and athletics. Successful students may qualify for higher representation at Sydney Southwest Schools Sports Association Championships and NSW Combined High School Championships.

Students will have the opportunity to trial for selection in Macarthur Zone sporting teams to compete at Sydney Southwest Schools Sports Association Championships. Students will have the opportunity to represent the school in selected State-wide Knockout competitions throughout the year.



School-wide expectations and rules

As a positive behaviour for learning school, Oran Park High School fosters a school climate that supports;

- a feeling of safety
- respect
- engagement in learning
- involvement in school life
- shared vision
- involvement of teachers, students, and families.

Through a school-wide shared commitment to the core values of Teamwork, Respect, Achievement and Kindness (TRAK), teachers explicitly define, teach and respond to expected behaviours across the school.

Students who are on TRAK are working well with others, are considerate learners and citizens, try their best and treat everyone with respect and kindness.

As such our core rules at Oran Park High School include:

Teamwork	Respect
Cooperate with others	Follow teacher instructions
Keep school spaces clean and tidy	Respect school property and environments
Wear the correct school uniform	Use technology appropriately
Behave safely	Allow others to learn

Achievement	Kindness
Attend school and class on time	Use kind language and words
Bring all required equipment	Say NO to bullying
Participate actively	Show kindness to others
Complete classwork to the best of your ability	

Mobile Phone Misuse

The NSW Government introduced restrictions on the use of mobile phones in NSW high schools in 2023. This was implemented to increase focus in classrooms, remove distractions and to also promote positive social interaction, while reducing the potential for online bullying.

At Oran Park High School **students are expected to keep their mobile phones 'Off and Away All Day'** This applies to all school hours, including break times such as lunch and recess, as well as while students are on school-based excursions.

Students are still able to carry their phones while travelling to and from school, but they must be turned off and placed in their bags by the first bell at 8.50 am. They cannot be accessed by students again until the final bell at 3.00 pm.

Students who fail to follow these rules will be subject to school disciplinary actions. These actions are outlined below.

Mobile Phone Misuse	School Action
1st Instance	<ul style="list-style-type: none">• Phone confiscated and handed to a Deputy Principal.• Student collects phone at the end of the school day.• Parents are notified via email.
2nd Instance	<ul style="list-style-type: none">• Phone confiscated and handed to a Deputy Principal.• Student collects phone at the end of the school day• Student will be issued with a 'Warning to remove mobile phone privileges' letter.• Parents are notified via email.
3rd Instance	<ul style="list-style-type: none">• Phone confiscated and handed to a Deputy Principal.• Parents are notified via email.• Phone will be returned to the parent at a time convenient to them.• Student will lose their right to have a mobile phone at school for ten school weeks (50 days). <p><i>Note: Where it is essential for a student to carry a mobile phone for safety reasons it will be locked in the office during school hours for the ten-week banning period.</i></p>
Any further breaches of the school's procedures during the restriction period will be dealt with under the school's discipline policy.	

School Safety

Schools are calm and safe environments that support teaching and learning.

All students and staff have the right to be treated fairly and with dignity, both online and offline, in an environment free from intimidation, violence, harassment, victimisation and discrimination, including that based on sex, race, religion, disability or sexual orientation.

The NSW Department of Education [Student Behaviour policy](#) and [Suspension and Expulsion procedures](#) apply to all NSW public schools.

Responses to all behaviours of concern apply to student behaviour that occurs:

- at school
- on the way to and from school
- on school-endorsed activities that are off-site
- outside school hours and off school premises where there is a clear and close connection between the school and students' conduct
- when using social media, mobile devices and/or other technology involving another student or staff member

Principals can suspend a student engaging in behaviour or behaviours of concern on grounds that could include but are not limited to:

- continued/persistent disobedience and/or disruptive behaviour
- malicious damage to or theft of property
- verbal abuse
- bullying and cyberbullying
- misuse of technology
- discrimination, including that based on sex, race, religion, disability, sexual orientation or gender identity
- being in possession of, uses or supplies illegal/restricted substances including alcohol, cigarettes and /or, vapes.
- being in possession of, or using weapons including using an implement as a weapon
- seriously threatening or engaging in physically violent behaviour
- engaging in serious criminal behaviour related to the school
- engaging in sexual harassment, sexual assault or other sexualised behaviour that may pose a risk of or has caused physical, psychological or emotional harm to others.

Behaviour Code for Students

NSW Department of Education

Behaviour code for students NSW public schools

NSW public schools are committed to providing safe, supportive and responsive learning environments for everyone. We teach and model the behaviours we value in our students.

In NSW public schools students are expected to:

- Respect other students, their teachers and school staff and community members
- Follow school and class rules and follow the directions of their teachers
- Strive for the highest standards in learning
- Respect all members of the school community and show courtesy to all students, teachers and community members
- Resolve conflict respectfully, calmly and fairly
- Comply with the school's uniform policy or dress code
- Attend school every day (unless legally excused)
- Respect all property
- Not be violent or bring weapons, illegal drugs, alcohol or tobacco into our schools
- Not bully, harass, intimidate or discriminate against anyone in our schools

Schools take strong action in response to behaviour that is detrimental to self or others or to the achievement of high quality teaching and learning.

Behaviour Code for Students: Actions

Promoting the learning, wellbeing and safety of all students in NSW Public Schools is a high priority for the Department of Education.

We implement teaching and learning approaches to support the development of skills needed by students to meet our high standards for respectful, safe and engaged behaviour.

Respect

- Treat one another with dignity
- Speak and behave courteously
- Cooperate with others
- Develop positive and respectful relationships and think about the effect on relationships before acting
- Value the interests, ability and culture of others
- Dress appropriately by complying with the school uniform or dress code
- Take care with property

Safety

- Model and follow departmental, school and/or class codes of behaviour and conduct
- Negotiate and resolve conflict with empathy
- Take personal responsibility for behaviour and actions
- Care for self and others
- Avoid dangerous behaviour and encourage others to avoid dangerous behaviour

Engagement

- Attend school every day (unless legally excused)
- Arrive at school and class on time
- Be prepared for every lesson
- Actively participate in learning
- Aspire and strive to achieve the highest standards of learning

The principal and school staff, using their professional judgment, are best placed to maintain discipline and provide safe, supportive and responsive learning environments. The department provides a policy framework and resources such as Legal Issues Bulletins, access to specialist advice, and professional learning to guide principals and their staff in exercising their professional judgment. In this context the NSW Government and the Department of Education will back the authority and judgment of principals and school staff at the local level.

education.nsw.gov.au



OPHS Parent Charter

Oran Park High School is committed to working as partners in learning to support the wellbeing and educational development of its students. The best results are achieved from working together. On occasion, parents may need to contact the school to:

- discuss the progress, engagement, behaviour or wellbeing of their child(ren).
- express concern about actions of other students
- enquire about school policies and processes.

It is expected that all parents and visitors will:

- model the school's core values of Teamwork, Respect, Achievement and Kindness
- treat all persons associated with the school with respect
- make appointments in advance for interviews and meetings
- discuss issues or concerns through the correct school procedures
- sign into the school's office for a visitor pass.

Behaviour that will not be tolerated:

- physical, verbal or written aggression or threats
- approaching another student with a view to making allegations or threats
- disruptive behaviour that interferes with the normal operation of the school day
- offensive or defamatory comments about students or staff, online or in person
- smoking, vaping, alcohol or drug use on school grounds or at school events.

To help direct parent concerns to the most appropriate staff, please note the following:

Concern	Appropriate action
Academic progress of your child	Call or make an appointment with the class teacher or faculty Head Teacher.
Wellbeing concern	Call or make an appointment with the Year Advisor.
Actions of other students	Minor issues should be discussed directly with the class teacher or Year Advisor if concerns exist across a range of subjects. Serious child protection concerns should be raised with the Deputy Principal. Please call or make an appointment.
Whole school policy or practices	Call or make an appointment with the Deputy Principal.
Change of information	Call the office during school hours. Alternatively email the school directly at oranpark-h.school@det.nsw.edu.au

Our staff will find a time to talk with you when they can give you their full attention. Please remember that our staff may be on class and dealing with other matters and they may not be available immediately.

Attendance

Education is important for all students, and regular attendance at school is essential for each child to achieve their educational best. NSW public schools work in partnership with parents to encourage and support regular attendance of students. When a child attends school every day, learning becomes easier, and students will build and maintain friendships with other students.

Under the *Education Act 1990*, parents are required to ensure their children of compulsory school age are enrolled, and regularly attend school.

The importance of arriving on time

Arriving at school and class on time:

- ensures students do not miss important learning activities scheduled
- helps students learn the importance of punctuality and routine
- reduces classroom disruption
- creates an atmosphere of high expectations

Lateness is recorded as a partial absence and must be explained by parents. If students arrive late to school (after 8.50am) they are to report to the administration office. It is important that students bring their student identification card each day. This allows them to swipe in if late and move off to class quicker.

If a valid reason is not given, then a late detention is issued. These students then report to recess detention in room C001.

What if my child is absent from school?

On occasion, your child may need to be absent from school. Justified reasons for student absences may include:

- being unwell
- having an unavoidable medical appointment
- being required to attend a recognised religious holiday
- exceptional or urgent family circumstances such as attending a funeral

You can record an absence in Sentral using future absence. Absences allows the parent to communicate absence information to the school. This includes past absences that require explanation and 'future' absences. A 'future' absence occurs when a parent is aware a child will be away from school (e.g. holidays).

If you have previously not recorded an absence an SMS will be sent when a child is absent. It is the responsibility of parents to respond with the reason the child is absent

and the anticipated return date. If the school has not received an explanation from parents within two days, the school may contact you to discuss the absence. The principal may decline an explanation if they do not believe the absence is in the best interest of your child. In these circumstances, your child's absence would be recorded as unjustified. The principal will discuss the decision with you and the reasons why medical certificates and/or other documentation are required for frequent or long-term absences. The principal may seek parental permission to contact medical specialists to obtain information to support your child. If the request is denied, the principal can record the absence as unjustified.

My child won't go to school, what should I do?

You should contact your child's Deputy Principal as soon as possible to discuss the issue and ask for help. Strategies to help improve attendance may include a referral to the school's learning and support team or linking your child with appropriate support networks. Further support from the Home School Liaison Officer in developing an *Attendance Improvement Plan* may be required.

What age can my child leave school?

All NSW students must complete Year 10 or its equivalent. After Year 10, and up until they reach 17 years of age, there are a range of flexible options for students to complete their schooling.

Travel and extended leave

Families are encouraged to travel during school holidays. See FAQs for the procedure on how to apply for extended leave.

Homework

Homework is a way of consolidating a range of skills including information, research skills, study skills and organisation skills.

There are three different types of homework a student may be required to complete:

- practice exercises – the application of skills and knowledge
- preparatory exercises – opportunities to gain background information
- extension exercises – opportunities for imaginative and independent work

Homework can take a variety of forms, for example:

- formal scheduled assignments that are completed over several weeks
- work not completed in class
- reading over material completed in class
- participating in a wide reading program

- creating study notes by summarising what they have learned in class

All students should be encouraged to engage in some form of review and/or preparation as part of their homework routine. Class tests and assessments are regularly scheduled, and home study should be planned for these.



ORAN PARK HIGH SCHOOL

School Library

Our school library is a dynamic, future focused space that encourages a love of reading and learning and provides an area for all students to use and enjoy.

The mission of Oran Park High School library is:

- to support the school's curriculum by providing:
 - Students with quality, relevant, current resources that meet their developmental, learning needs and interest
 - Staff with current curriculum and professional development materials to support their teaching.
- to assist members of the learning community to become effective, critical and responsible users of information
- to foster a lifelong love and appreciation of quality literature and reading for pleasure.

Printing – all students will be issued with a student ID card. Students can add funds when required. Printing credit can be purchased in School Bytes and sold in \$5.00 increments. Please update credit around assessment time.

Borrowing – students use their student ID card to borrow books.

Games – students can borrow board games such as Chess, Uno at recess and lunchtime.

Computer access – students have access to desktop computers to undertake schoolwork, assessment tasks, reserve books through Oliver and printing.

Collection – The library holds various titles: non-fiction, fiction, magazines, graphic novels, picture books, manga as well as ebooks and audiobooks. Students have access to 1000s of ClickView videos across all Key Learning Area

Disability Support Unit

The school currently operates seven specialist classes for students with disability collectively known as the Support Unit. These classes support students with:

- autism
- emotional and/or mental health difficulties
- intellectual disability
- physical disability

Placement into specialist classes within NSW Government schools is done through an external application process known as an 'access request'. For information about enrolments into the Support Unit please contact the School Counsellor or Learning and Support Team.

Students in the Support Unit follow the same timetable and complete the same mandatory curriculum requirements as all students to achieve their Record of School Achievement and Higher School Certificate. Students may access regular courses, Life Skills courses, or a combination of both. Life Skills courses provide options for students with disability who are unable to access regular courses and place emphasis on:

- communication
- practical application of skills
- personal, social and emotional development
- skills for independent living

For further information please see the *Support Unit Parent Guide*.



Curriculum

Stage 4 – allocated periods per timetable cycle (fortnight)

Subject	Year 7	Year 8
English	8	7
Mathematics	8	6
Science	8	6
Geography/ History (HSIE)	6	6
PDHPE	5	5
Technology Mandatory	5	5
Music	2	3
Visual Arts	2	3
Sport	2	2
ICT / Library	2	
Language (Korean)		5
TRAK / Assembly	2	2

Stage 5 – allocated periods per timetable cycle (fortnight)

Subject	Year 9	Year 10
English	8	8
Mathematics	8	8
Science	7	8
Geography/ History (HSIE)	6	6
PDHPE	5	5
Sport	2	2
X & Y – Electives	12	10
TRAK (Year 9) Careers (Year 10)	2	1

Stage 6 – refer to Senior Subject Information Booklet

Class Organisation

As of 2026, OPHS has the following classes in each cohort:

Year 7	Year 8	Year 9	Year 10	Disability Support Unit
10 classes 1 x Enrichment class 9 x Mixed ability	10 classes 1 x Enrichment class 9 x Mixed ability	13 classes	11 classes	7 classes 4 x multi-categorical 3 x Autism

Student placement is reviewed regularly, and it is not uncommon for students to be moved around so that the mix of students in our classes is the most appropriate for all students. The decision to move students will be based on recommendations from faculty Head Teachers, Year Advisers and the Deputy Principal. Parents will be notified if the school is contemplating moving a student.

Years 9-10: For students in Years 9 and 10 a different structure applies to different subjects, depending on the courses offered.

School Contributions

The Department of Education has a commitment to ensuring that every student in NSW has access to high-quality public education in public schools.

While instruction in public schools must be provided free of charge, we are extremely grateful that families choose to make financial contributions to our school.

- The general contribution is set at \$80.00 per student for Years 7-10 and \$100 per student for Years 11 & 12. It is used to supplement government funding and to make possible such purchases as additional library resources, additional computing resources, and school environment improvements.
- A Technology contribution of \$50.00 per student for Years 7-10 and \$70 per students for Years 11 & 12 supports the school's commitment to state-of-the-art technology and increases opportunities for student access and skill development. It will also cover a variety of e-learning platforms that will be integrated into various curriculum areas and will provide additional online learning opportunities. Each student will receive a "smart ID card".
- Families facing financial difficulty are encouraged to contact the school office so payment options can be discussed. A student assistance form is available from the office and application will be referred to your child's Deputy Principal.
- The school requests that parents pay the elective contributions (Years 9 & 10) and course contributions (Years 11 & 12) which help to subsidise course materials such as food, timber, art supplies and the maintenance of equipment. These contributions are individually based according to courses elected and are advised before entering Year 9 & Year 11. Please refer to Subject Selection & Senior Subject Information Booklets for details.

Year 7	
Description	Contributions
General contribution	\$80.00
Technology	\$50.00
TAS Apron (available for purchase)	\$10.00
Total	\$140.00

Year 8	
Description	Contributions
General contribution	\$80.00
Technology	\$50.00
TAS Apron (available for purchase)	\$10.00
Total	\$140.00

Year 9	
Description	Contributions
General contribution	\$80.00
Technology	\$50.00
Electives	
Child Studies	\$10.00
Dance	\$10 + \$40 Costume Fee
Design and Technology	\$60.00
Food Technology	\$80.00
Food Technology (Year 9) & Certificate 1 Hospitality (Café Skills) (Year 10)	\$80.00
Industrial Technology - Engineering	\$60.00
IT Multimedia	\$30.00
Industrial Technology – Timber	\$70.00
iStem	\$70.00
Marine & Aquaculture Technology	\$50.00
Music	\$30.00
Photographic & Digital Media	\$40.00
Textiles Technology	\$40.00
Visual Arts	\$60.00

Year 10	
Description	Contributions
General contribution	\$80.00
Technology	\$50.00
Electives	
Child Studies	\$10.00
Dance	\$10 + \$40 costume Fee
Design & Technology	\$60.00
Food Technology	\$80.00
Food Technology (Year 9) & Certificate 1 Hospitality (Café Skills) (Year 10)	\$80.00
Industrial Technology - Engineering	\$60.00
IT Multimedia	\$30.00
Industrial Technology – Timber	\$70.00
iStem	\$70.00
Marine & Aquaculture Technology	\$50.00
Music	\$50.00
Photographic & Digital Media	\$40.00
Textiles Technology	\$40.00
Visual Arts	\$60.00

Year 11	
Description	Contributions
General contribution	\$100.00
Senior Technology	\$70.00
Senior Locker Hire (refunded upon leaving school)	\$50.00
Courses	
Biology	\$50
Construction (VET)	\$80
White card	\$80
Design and Technology	\$70
Engineering Studies	\$30
Entertainment Industry (VET)	\$30 + White card \$80 + Crew Shirt TBC
Food Technology	\$80
Hospitality – Food and Beverage (VET) + uniform	\$120 + Approx \$65
Industrial Technology – Timber Products and Furniture Technologies	\$100
Information Processes and Technology	\$20
Music	\$50
Textiles and Design	\$50 + Fabrics
Visual Arts	\$120
Endorsed Courses	
Exploring Early Childhood	\$25
Photography, Video and Digital Imaging	\$50

Year 12	
Description	Contributions
General contribution	\$100.00
Senior Technology	\$70.00
Courses	
Life Ready	\$50
Biology	\$50
Construction (VET)	\$80
White card	\$80
Design and Technology (major work)	\$40
Engineering Studies	\$40
Entertainment Industry (VET)	\$30
Food Technology	\$60
Hospitality – Food and Beverage (VET)	\$90
Industrial Technology – Timber Products and Furniture Technologies	\$60 + Major project
Information Processes and Technology	\$20
Music	\$50
Textiles and Design	\$50 + Fabrics
Visual Arts	\$120
Endorsed Courses	
Exploring Early Childhood	\$25
Photography, Video and Digital Imaging	\$50

School Bytes



Oran Park High School uses School Bytes for financial payments including subject consumables ie. ingredients, paints, timber, textiles etc, levies and excursions. Parents will receive family statements with a link to payments via email. Excursion notes may also be emailed to you with links to payment. If you need to register for School Bytes the link can be found on the school website under “Make a payment” or you can now download the App.

Cash and EFTPOS payments

While the school prefers online payments be made, we can accept payments at the school administration office between the hours of 8.30am and 1.30pm only.

Please consider using School Bytes. This system allows ease of use by providing clear and precise instructions and is the preferred method of payment.

Working Together with the Community

Oran Park High School welcomes community participation in the school. Our community includes students, teaching staff, the executive, support staff, parents, interested community members, local businesses and industry. The school community is invited to participate through various meetings and school events.

Parents and Citizens

A P&C Association is a school-based organisation consisting of parents, teachers and interested citizens. The P&C have the following responsibilities:



- promoting the interest of the school by bringing parents, citizens, students and teaching staff into close cooperation
- assisting in providing facilities and equipment for the school and promoting the recreation and welfare of the students at the school
- encouraging parent and community participation in curriculum and other educational issues in schools
- assisting and cooperating with teaching staff at public functions associated with the school
- electing parent representatives

School Newsletter

The school newsletter will be distributed by email and posted on the school website and Facebook page. The newsletter will have relevant information, future dates and good news stories from Oran Park High School.

Parent/Student Portal

All students and families will have access to the Sentral parent/student portal. You will be able to securely access attendance, semester reports and book parent/teacher interviews at set times of the year. Families will be emailed and sent out instructions on how to register and access Sentral and the Sentral Parent Portal app at the beginning of the school year.



<https://ophs.sentral.com.au/portal2/#!/login>

Reporting to Parents

School reports are issued twice a year at half yearly intervals and parents have an opportunity during the year to discuss their child's progress at parent/teacher interviews.

School Social Media

Oran Park High School uses social media to communicate student excellence, school events and information. The school has a Facebook page with dedicated closed groups for each year cohort. This is where questions can be asked and additional photos and information specific to each year group will be posted. To join the group, you must have a child enrolled in that year group at Oran Park High School and must agree to abide by the Rules of Engagement.



<https://www.facebook.com/OranParkHS>

Oran Park High School also has an Instagram account and a Twitter handle, to keep families up to date and informed.



https://www.instagram.com/oranpark_highschool/

School Website



<https://oranpark-h.schools.nsw.gov.au/>

Oran Park

HIGH SCHOOL



DAILY SPECIALS

MONDAY

\$6

Mexican Street Bowl

TUESDAY

\$6

Mac N Cheese V

WEDNESDAY

\$6

Italian Meatball Pasta

THURSDAY

\$6.50

Assorted Subs H

FRIDAY

\$5

Pizza V H

BURGERS



PO

Pre-Order by 9am

★ **Oli's Chicken Burger**

Chicken, lettuce & mayo

\$6.00

H

★ **Peri Peri Chicken Burger**

Chicken, lettuce & peri mayo

\$6.00

H

★ **Veggie Delite Burger**

Veggie burger, lettuce & peri mayo

\$6.00

V H

★ **Cheese Burger**

Prime beef pattie, cheese, & tomato sauce

\$6.00

FAVOURITES

- ★ **Wedges** V **\$5.00**
- ★ **Meat Pie** **\$4.50**
- ★ **Sausage Roll** **\$5.00**
- ★ **Cheese & Spinach Roll** V **\$5.50**
- ★ **Corn Cob** V **\$2.00**
- ★ **Chicken Strip** H **\$2.50**
- ★ **Chicken Wrap** H **\$4.50**
- ★ **Hot Dog** **\$4.00**
- ★ **Open Garlic Melt** V **\$2.50**

CLASSICS

\$6

PO

Pre-Order by 9am

- ★ **Mexican Beef Nachos**
- ★ **Creamy Chicken Pasta** H
- ★ **Mac N Cheese** V
- ★ **Beef Chow Mein & steamed rice**
- ★ **Butter Chicken** H & steamed rice
- ★ **Mild Curry Chicken** H & steamed rice

BREAKFAST

- ★ **Hash Brown** V **\$1.50**
- ★ **Cheese Toastie** V **\$3.00**
- ★ **Ham & Cheese Toastie** **\$4.00**
- ★ **Fruit Cup** V **\$3.00**
- ★ **Muffins** **\$3.50**



Special dietary requirements please see Canteen Manager



SUBS/ROLLS

\$7

- ★ Classic Chicken Sub H
- ★ Peri Chicken Roll H
- ★ Chicken, Mayo Roll H
- ★ Chicken Caesar Sub
- ★ Chicken Schnitzel Roll H
- ★ Salad Roll V

SALAD BAR

- ★ Fruit Cup V \$3.00
- ★ Fruit Tub V \$5.00
- ★ Chicken Caesar Salad \$6.50
- ★ Oriental Noodle Salad H \$6.50
- ★ Power Bowl H V \$6.50
- ★ Chicken Power Bowl H \$7.00

PO
Pre-Order
by 9am



WRAPS

\$4.50

- ★ Chicken Mayo Wrap H
- ★ Chicken Peri Wrap H
- ★ Ham Wrap
- ★ Egg Wrap V

SIDES N SNACKS

- ★ Frozen Juice Icy \$1.00
- ★ Muffin \$3.50
- ★ Frozen Slushie \$2.00
- ★ Whole Fruit \$1.50



SANDWICHES

\$5

PO
Pre-Order
by 9am

- ★ Ham & Cheese
- ★ Salad V
- ★ Egg & Lettuce V
- ★ Chicken, Lettuce & Mayo H
- ★ Ham, Cheese & Tomato
- ★ Ham & Salad
- ★ Chicken & Salad H



GF/HALAL

- ★ GF Beef Pie GF \$5.50
- ★ GF Sausage Roll GF \$5.00
- ★ Halal Sausage Roll H \$5.50
- ★ Gluten Free Sandwiches & Wraps GF
- ★ Vegetarian GF H V \$5.50

Chicken products are halal

DRINKS

- ★ Water \$3.00
- ★ Popper Juice \$2.50
- ★ Sports Water \$4.50
- ★ Oak Milk \$4.80
- ★ Gatorade \$4.80
- ★ Diet Bottles \$4.80
- ★ Diet Can \$3.20
- ★ Milkshake \$4.00
- ★ Thickshakes \$4.50



Special dietary requirements
please see Canteen Manager



Frequently Asked Questions

What does my child do when they arrive at school in the morning?

Say goodbye and move into the school grounds. They are not to remain near the entrance gate or leave the school once they have arrived.

Can parents come into the school grounds?

During special events parents may be invited into the school grounds. At all other times parents must sign in through the administration office. The school playground is for students only.

What do I do if my child is sick?

If your child is sick you will need to respond to the SMS sent to your mobile number or send in a note with your child on the day they return. If your child is absent for two or more consecutive school days, a Doctor's Certificate is required.

If your child becomes unwell during school, they will need to inform a teacher; they will be given a note to be admitted to the sick bay. Your child is not permitted to contact you by phone.

What does my child do if they are late?

If a student is late to school, they need to present to the administration office with their student ID card and a note explaining their lateness. If students are late without a valid reason, they are issued with a recess detention. Frequent lateness is considered persistent disobedience and will be dealt with under the discipline framework.

What does my child do if they need to leave early?

Application or an early leavers pass can only be made prior to roll call each day at the administration office. A letter from parents stating the following must be supplied – name, roll call, date, time, reason and mobile contact number to verify the request.

If an unexpected appointment comes up and you must collect your child from school, please be mindful of the recess and lunch break times. Due to the expanse of the land and the number of students it is often hard for them to hear the paging system if we need to locate them. You may be delayed getting to your appointment whilst we call them to the office.

Parents are reminded that all students are to be signed out and picked up via the school administration office.

What if the family is planning a holiday?

An application for extended leave must be applied for when an absence is for more than 5 days. Together with this online application, travel documents such as an itinerary or flight details must also be attached. Please where possible make this application up to 4 weeks in advance.

https://online.schoolbytes.education/published_forms/1091/002c0f4d-676d-4d1b-8d78-cb1e0b4243cd

Your child must inform their Year Adviser so that work can be organised or a plan for missed exams and/or assessment tasks can be arranged. Applications for extended leave will be submitted to the principal for approval and a certificate will be sent to you if approved.

What if my child needs to take medication at school?

When a medical practitioner has prescribed medication that must be administered during the school day, parents/carers must:

- notify the school
- provide up to date information as required
- supply the medication and any 'consumables' necessary for its administration in a timely way.

Parents/carers of children who require prescribed medication to be administered at school must complete a written request provided by the administration staff. "Request for support at school of a student's health condition" must be completed by the parents/carers prior to any medication being administered by staff. Students must not carry medications unless there is a written agreement between the school and the student's parents/carers.

What if my child is late to class?

Students must have a note from their previous teacher explaining why they are late. Unexplained lateness could result in the need to make up the missed time during breaks.

What if I need to drop something off for my child during school?

All visitors are to report to the school administration office. Parents/guardians/friends are not to go into the school and approach students. Items brought to the school administration office for students must be clearly labelled with the student's name and can be collected during break times.

Can my child have food delivered to the school?

Students are not permitted to use food delivery services at school. The school does not permit food to be delivered to the school at any time. Students can bring lunch and snacks or order from Oli's Canteen (*see menu page 37-38*)

What if my child loses their timetable?

Students need to log into the student portal to access and print a new timetable. If they print at school, they will need to go to the library and use their library ID card. If a reprinted timetable is required, students need to see their Year Adviser. Additional copies of timetables will cost \$1.00.

What needs to be done if there is a change of address or other details?

It is vital that the school has accurate up-to-date information on all students; this is particularly important in emergency situations. If a change occurs during the year, parents need to contact the school administration office in writing or email, clearly stating your child's name, class and updated information.

https://online.schoolbytes.education/published_forms/999/27fe8685-fc3c-42d0-9f5f-a789c5d8a21f

Is my child permitted to bring BYOD technology to school?

Students are not required to bring any personal learning devices to school. The school has a sufficient number of laptops and iPads to cater for all students learning needs.

Senior students may be permitted to bring personal laptops as required.

Notes

Notes

