



# MOUNT TERRY PUBLIC SCHOOL

## Growing Strong Reaching Far

Principal: Mr David O'Connor  
Deputy Principal: Mr Steve Hailstone

### TERM 1 WEEK 8

<b>Term 1 2025</b>	
<b>Week 8</b>	Harmony Week
Friday 21 <sup>st</sup> March	*Nowra Zone Rugby League Trials *Harmony day
<b>Week 9</b>	
Thursday 27 <sup>th</sup> March	*Tongarra Rugby League Legends Gala Day – Croome Road Albion Park
Friday 28 <sup>th</sup> March	*PSSA Boys Knockout Soccer 9:30am – 11:30am *PSSA Girls Knockout 11:00am – 1:30pm
<b>Week 10</b>	
Monday 31 <sup>st</sup> March	*Boys Cricket PSSA knockout vs Minnamurra P.S - Myimbarr
Thursday 3 <sup>rd</sup> April	*Girls Cricket PSSA Knockout vs Woonona P.S
Friday 4 <sup>th</sup> April	*South Coast Rugby League Trials
<b>Week 11</b>	
Wednesday 9 <sup>th</sup> April	*Yr 3-6 Cross Country
Friday 11 <sup>th</sup> April	*K-Yr 2 Easter Hat Parade – 9:30am – 10:50am *Last day of term
<b>Term 2</b>	
Monday 28 <sup>th</sup> April	*Staff Development day
Tuesday 29 <sup>th</sup> April	*Staff Development Day
Wednesday 30 <sup>th</sup> April	*Students return for Term 2

### Harmony Day

Thank you to everyone for getting into the spirit of Harmony Day and dressing up in orange to mark this important occasion. In classrooms, students discussed what the day is all about and completed activities related to learning about the importance of harmony. Thank you to our wonderful SRC for coordinating this event.

### Ninja Park

Many of you would remember that last year, I announced that the school was going to have a new ninja park installed in our playground, near the covered basketball court area. I am pleased to say that weather pending, that work is due to commence in the Easter holiday break. Our School Leaders from 2024 were very much part of that design process and I'm sure the ninja park will be a great addition to our play options for students.

### Sports News

Best wishes to all students participating in the Tongarra Rugby League Legends Gala Day next Thursday 27 March. Our school has a great tradition of doing well in rugby league and I'm sure our teams will represent us with distinction. Many thanks to Mr Fownes for coordinating our school teams again this year.

Good luck also to our girls and boys soccer knockout teams who play their first round of the state knockout on Friday 28 March. We know you will do a great job representing our school, playing fairly and doing your best. Thanks Mr Robbo for taking our teams again this year.

The free girls Friday afternoon cricket program concludes next Friday 28 March. The girls have had lots of fun over the past couple of weeks and lots of girls have participated. Many thanks to Mrs Cartwright for facilitating this great experience for our girls.

Finally, the girls cricket team will compete in their first round of the state knockout on Thursday 3 April. With all that Friday afternoon practice, they are sure to do really well! Good luck girls!

### NAPLAN

NAPLAN for Yrs 3 & 5 has now concluded. Thank you to everyone in the school community who helped us navigate this assessment process. Parents and carers will receive individual student reports on NAPLAN assessments later in the year. We will send these to you as soon as they are received.

### Breakfast Club

A reminder that Breakfast Club operates each Thursday morning before school. Breakfast Club is a great opportunity for our children to have some toast and fruit to start the day well. Breakfast Club operates from the canteen each Thursday morning and is completely free. Many thanks to Miss Cassoli for coordinating this great program at our school.

### P&C Meeting

Thank you to the parents and carers who attended the P&C Meeting and AGM on Monday night. Congratulations to the newly elected executive. We look forward to working closely with the P&C once again this year for the benefit of the whole school community.

## **Yrs 3-6 School Cross Country Carnival**

Just some advance notice that the Yrs 3-6 School Cross Country Carnival will be held here at school on Wednesday 9 April. Parents and carers are welcome to come along and watch their children compete. More information will be shared on School Bytes closer to the date.

## **Easter Hat Parade**

The annual Easter Hat Parade for students in Yrs K-2 will be held under the main COLA on the last day of term, Friday 11 April. Parents, carers and friends are welcome to attend and enjoy the parade. Time to get those creative juices flowing to come up with a fabulous Easter hat for the parade!

## **Road Safety**

Can I please once again ask that parents and carers be extra careful and conscious of making sure they follow safe road behaviours and road signs around our school, especially at drop-off and pick-up times. Our wonderful crossing people have reported many instances of really unsafe parent/carer behaviour and we really want that to be corrected. Please be aware that police and rangers will be periodically patrolling the areas around our school and issuing fines to people doing the wrong thing. Thank you for helping to make our school a safer place for the whole school community.

## **Term dates**

The last day for all students this term is Friday 11 April. All students return for the start of Term 2 on the same day, Wednesday 30 April. Staff are here on the Monday and Tuesday before that for professional learning on those School Development Days. Please note they are pupil-free days. PEAK is, as always, open for bookings for school holidays and School Development Days. Please contact PEAK directly to make a booking.

## **Our Staff Are Learners Too**

Thurs 13 March: RFF teachers participated in learning about the new curriculum and how to implement it through a Curriculum and Collaboration Day.

Fri 14 March: Yr 1 teachers participated in learning about the new curriculum and how to implement it through a Curriculum and Collaboration Day.

Mon 17 March: Mrs Cartwright & Mr Fisher attended a workshop about integrating Aboriginal perspectives into Science lessons.

Tue 18 – Wed 19 March: Mr O'Connor attended the Regional South Principals' Conference in Wollongong, focused on leadership and equity.

Wed 19 March: Mrs Leighton, Mrs Santos and Mrs Senff completed training in mental health management and support.

David O'Connor  
Principal

## Warrigal Nursing Home Visit

4W were the first class to visit Warrigal Nursing Home this year. They joined the residents of the nursing home to listen to a concert organised by their staff. The theme was for St Patrick's Day, so they sang lots of Irish songs and finished with 'Danny Boy'. It was a lot of fun, and the students seemed to enjoy it very much.

Every Wednesday afternoon a class is rostered to visit the nursing home where they can interact with the residents for approximately half an hour. At the beginning of each month, the nursing home puts on a low-key concert for the resident and the class that's rostered on, is invited to join in and listen.

Thank you to the teachers for volunteering to walk their class to the nursing home.

Mrs Mayers



ACE AWARDS

3R	Kahleesi N & Nixon M	4W	Lana K & Kayde B
3B	Sienna C & Brody P	5C	Bodie G & Stefan V
3H	Scarlett W & Kingsley M	5B	Bianca A & Ruby H
K/6H	Levi W	5H	Hudson B & Savannah P
K/6S	Paddy C	6W	Indi A & Emma M
4B	Olivia D & Oscar J	6F	Millie P & Archer C
4M	Jonah Y & Jack F	6P	Grace H & Kiara G

KW	Indie K & Hudson K	1J	Skyla H & James G
KI	Mia M & Bradley I	1L	Braxton R & Zane V
KF	Lochlan W & Arabella M	2H	Willow H & Iylah S
KC	Erin P & Cian C	2C	Allayah W & Lyla S
K/6C	Dustyn W	2Z	Riley G & Isabelle M
1C	Charlie P & Ivy C	2K	Myah D & Ethan W
1D	Logan H & Nyah C		

# KEEP OUR CHILDREN SAFE



## IMPORTANT SIGNS AROUND SCHOOLS



### NO PARKING

You can stop in a No Parking zone for a maximum of 2 minutes to drop-off or pick-up passengers. You must stay within 3 metres of your vehicle at all times.



### NO STOPPING

Don't stop on length of road where there is a No Stopping sign. (Exemptions for medical emergencies, vehicle breakdown and road obstructions ahead).



### BUS ZONE

Don't stop or park in a Bus Zone unless you're driving a public bus.



## THE SAFETY OF OUR CHILDREN DEPENDS ON US

Traffic rules and parking restrictions are in place to improve everyone's safety.

*Fines current as of 1 July 2024. Fines and demerit points are subject to change.*



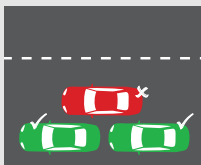
Parking in a way that blocks buses and crossings or obscures sight lines is illegal, and puts children and motorists at risk.

## CHILDREN CROSSING

### CHILDREN'S CROSSING

Don't stop within 20m before the crossing and 10m after the crossing.

Penalty from  
**\$544**  
+ 2 Demerit Points



### DOUBLE PARKING

Don't stop on a road between the road centre and another vehicle parked at the side of the road to wait, pick up or drop off passengers.

Penalty from  
**\$410**  
+ 2 Demerit Points



### SPEEDING

Don't exceed 40km/h during the designated school zone hours.

Penalty from  
**\$238**  
+ 2 Demerit Points

## THINK AHEAD - BE PATIENT

Follow the traffic rules within school zones. The cost of taking your children to school depends entirely on you.

*Fines current as of 1 July 2024. Fines and demerit points are subject to change.*

# The School Opal card

The School Opal card gives eligible students free or discounted travel between home and school on approved metro, train, bus, ferry and light rail services during term.

## Who can apply?

To be eligible for a School Opal card, students may need to live a minimum distance from their school:

### Years K–2 (Infants)

There is no minimum distance.

### Years 3–6 (Primary)

More than 1.6km straight line distance or at least 2.3km walking.

### Years 7–12 (Secondary)

More than 2.0km straight line distance or at least 2.9km walking.



Students who live too close to be eligible for free travel may still qualify for a School Term Bus Pass. This pass offers travel on buses between home and school at a discounted rate for the whole of the school term. For more information about who can apply, visit [transportnsw.info/school-students](https://transportnsw.info/school-students)

## Who needs to apply

A new application is only required if the student has not had a School Opal card before.

If the student already has a School Opal card and is changing schools, campuses or home address, their Opal card will need to be updated for the new school year before mid-December at [transportnsw.info/ssts-update](https://transportnsw.info/ssts-update)

## How to apply

Applications for next year open at the start of Term 4 this year.

### Step 1

Once the new school has confirmed the student's enrolment, complete the application at [transportnsw.info/school-students](https://transportnsw.info/school-students)

### Step 2

The school endorses the application.

### Step 3

Once Transport for NSW has approved the application, a School Opal card will be sent to the address provided on the application.



A parent or guardian must apply for students 15 years and under. Students 16 years and over can apply for themselves.



## Which card to use

The School Opal card is only for travel to and from school. So it's a good idea to get a Child/Youth Opal card for travel after hours, on weekends or during school holidays.

### Child/Youth Opal card benefits

- Concession fares across the Opal network.
- 30% fare discount on metro/train, bus and light rail services when travelling on Fridays, weekends, public holidays and outside of the peak times.
- \$1 transfer discount for every transfer between modes (metro/train, ferry, bus or light rail) as part of one journey within 60 minutes from the last tap off.
- Set auto top up and link it to a credit or debit card so there's always enough value on the card to travel.

Find out more at [transportnsw.info/opal](https://transportnsw.info/opal) or pick one up from an Opal retailer. To find a retailer in your area visit [transportnsw.info/opal-retailers](https://transportnsw.info/opal-retailers)



Secondary students aged 16 and over can travel with a Child/Youth Opal card when carrying a Transport Concession Entitlement Card. To apply contact your school or institution.

## More information

For more information about school travel assistance, including details about travel restrictions and unsuccessful applications, visit [transportnsw.info/school-students](https://transportnsw.info/school-students)

### Privacy

For information on how we handle personal information please refer to the Opal Privacy Policy at [transportnsw.info/opal-privacy-policy](https://transportnsw.info/opal-privacy-policy) and the School Pass Terms at [transportnsw.info/school-pass-terms](https://transportnsw.info/school-pass-terms)



# Tap on and tap off every time

because it tells us how many people are using public transport. This allows us to better plan services for you.



It is a condition of the *School Pass Terms* and the *Student Codes of Conduct* when travelling that students in possession of the School Opal card must tap on and tap off every time when using public transport to travel to and from school. Per section 3.2 of the Opal Privacy Policy, Transport for NSW collects information from taps on and taps off to support coordination, planning and policy development for transport, transport services and transport infrastructure.



Tap on and tap off your  
School Opal card every time





# Visit Minnamurra Rainforest

Nature hosts the best stories

## Minnamurra Rainforest April 2025

### Minnamurra Rainforest ranger- guided tour

**Monday 14 and Thursday 24 April 2025**

Times: 10:00 –10:30, 11:00 –11:30 and 12:00 –12:30

Cost: Adult \$10 per person. Child (5 –16 years) \$5 per person. Family \$25 (2 A and 2C)

Grade: Easy. Suitable for ages 5 years and above.

### Junior ranger: Minnamurra Rainforest

**Wednesday 16 April 2025**

Times: 10:30am – 12pm

Cost: Child (5 –15 years) \$14 per person

Grade: Medium. Suitable for ages 5 years & above.



### Minnamurra Rainforest by torchlight

**Wednesday 23 April 2025**

Time: 6pm - 7:30pm

Cost: Adult \$25 per person. Child (5 –16 years) \$15 per person. Family \$70 (2A and 2C)

Grade: Medium. Suitable for ages 5 years and above.

**Bookings are essential – fees apply**

<https://www.nationalparks.nsw.gov.au/kids-and-family-activities>

or call 1300 072 757 (13000 PARKS)