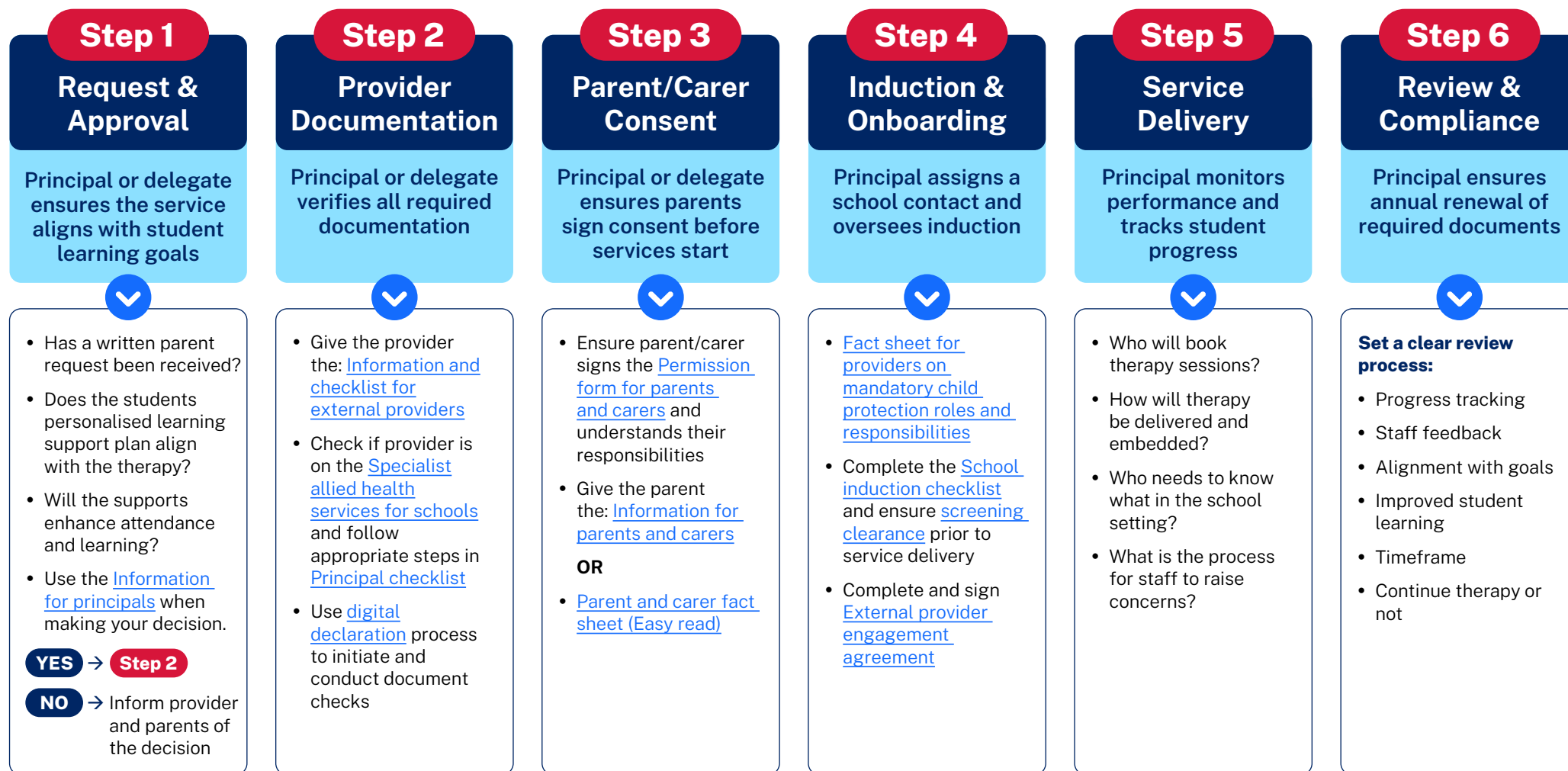


External Provider Flowchart for Schools



Embedding goals:

- [Personalised Learning and Support](#)
- [Collaboration with Allied Health Providers](#)
- [Personalised learning and support in NSW public schools](#)

Explore more information by visiting the department's [Externally funded service providers](#) webpage or scanning the QR code. Learn about annual checks, insurance requirements for sole traders, and guidelines for one-off provider visits. Explore now for essential insights!

