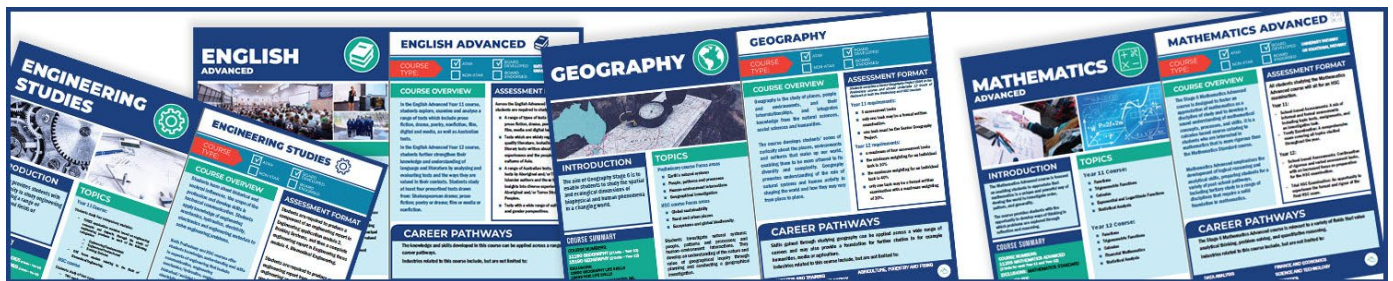




**KARIONG MOUNTAINS**  
HIGH SCHOOL  
UNITY KNOWLEDGE RESPECT

# Stage 6 - Year 11

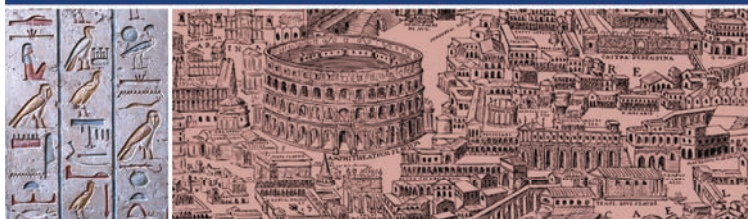
# 2026



## Subject Introduction Booklet



# ANCIENT HISTORY



## INTRODUCTION

This course provides students with opportunities to develop and apply their understanding of methods and issues involved in the investigation of the ancient past.

## COURSE SUMMARY

**COURSE NUMBERS:**  
11020 ANCIENT HISTORY (2 Units – Year 11)  
15020 ANCIENT HISTORY (2 Units – Year 12)

**EXCLUSIONS:**  
16672 ANCIENT HISTORY LIFE SKILLS  
16699 HSIE LIFE SKILLS

**PREREQUISITES:** NIL

**FEES:** NO FEE

## TOPICS

### Year 11

The Year 11 course comprises three sections:

- Investigating Ancient History
- Features of Ancient History
- Historical Investigation

### Year 12

The Year 12 course comprises four sections:

- Core Study: Cities of Vesuvius – Pompeii and Herculaneum
- One 'Ancient Societies' Topic
- One 'Historical Periods' Topic

# BIOLOGY



## INTRODUCTION

The Biology course explores life from the molecular level to whole system interactions, including applications of biology and their significance in finding solutions to health and sustainability issues in our changing world.

## COURSE SUMMARY

**COURSE NUMBERS:**  
11030 BIOLOGY (2 Units Year 11)  
15030 BIOLOGY (2 Units Year 12)

**EXCLUSIONS:** NIL

**PREREQUISITES / COREQUISITES:** NIL

**FEES:** NO FEE

## TOPICS

### Preliminary course

- Module 1 Cells as the Basis of Life
- Module 2 Organisation of Living Things
- Module 3 Biological Diversity
- Module 4 Ecosystem Dynamics

### HSC course

- Module 5 Heredity
- Module 6 Genetic Change
- Module 7 Infectious Disease
- Module 8 Non-infectious Disease and Disorders.

# ANCIENT HISTORY



**COURSE TYPE:**



## COURSE OVERVIEW

The Year 11 course provides students with opportunities to develop and apply their understanding of methods and issues involved in the investigation of the ancient past. Students engage in the study of a range of features, people, places, events and developments of the ancient world.

In Year 12, student apply their understanding of archaeological and written sources in the investigation of the ancient past. Through a core study, students investigate the cities of Pompeii and Herculaneum, and explore issues relating to reconstruction and conservation of the past.

## ASSESSMENT FORMAT

In the Year 11 course, students undertake at least TWO case studies.

- One must be from Egypt, Greece, Rome or Celtic Europe, and
- One must be from Australia, Asia, the Near East or the Americas.

In Year 12, the course requires study from at least TWO of the following areas:

- Egypt
- Near East
- China
- Greece
- Rome

# BIOLOGY



**COURSE TYPE:**



## COURSE OVERVIEW

The Year 11 course investigates cellular structure and provides a basis for understanding the way in which multicellular organisms transport and absorb nutrients and carry out gas exchange. Exploring variations in the structures and functions of organisms provides an understanding of the effects of the environment on living things and on biodiversity.

The Year 12 course investigates reproduction, inheritance patterns and the causes of genetic variation in both plants and animals. Applications of this knowledge in biotechnology and various genetic technologies are explored in the light of their uses in the treatment, prevention and control of infectious and non-infectious diseases.

*This course offers opportunities for students to carry out fieldwork and engage with organisations working in this subject area. Practical Investigations (in the classroom or laboratory) make up at least 35 hours of course time each year.*

*15 hours of the course time is dedicated to depth studies in both Year 11 and Year 12, which allow for the further development of one or more scientific concepts.*

## ASSESSMENT FORMAT

In Year 11, students will undertake three assessments, one each term. The tasks will involve a written component in the format of a report or research task, one of these will also include a practical component. The third task will be a Yearly examination in Term 3.

In Year 12, students will complete 4 assessments, one each term. Each task will involve a written component in the format of a report or research task, one of these will also include a practical component. The fourth task will be the Trial HSC examination in Term 3.

*Each year, at least one assessment task will include depth study hours.*

## CAREER PATHWAYS

The knowledge and skills developed in this course can be applied across a range of career pathways.

Industries related to this course include, but are not limited to:

ARTS AND RECREATION  
RESEARCH  
ARCHAEOLOGY

EDUCATION AND TRAINING  
LIBRARIAN  
PUBLIC ADMINISTRATION AND SAFETY



## CAREER PATHWAYS

Biology can be applied across a range of career paths and may also provide a foundation for further studies in the sciences.

Industries related to this course include, but are not limited to:

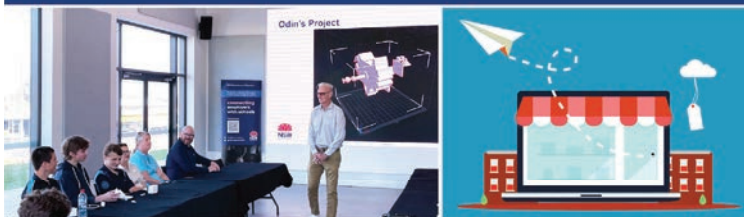
EDUCATION AND TRAINING  
LABORATORY WORK  
ELECTRICITY, GAS, WATER, WASTE

HEALTHCARE  
SCIENCE  
FORESTRY

FORENSICS  
AGRICULTURE



# BUSINESS STUDIES



## INTRODUCTION

This course provides students with opportunities to develop an understanding of how theoretical and practical aspects of business combine.

## COURSE SUMMARY

**COURSE NUMBERS:**  
11040 BUSINESS STUDIES (2 Units – Year 11)  
15040 BUSINESS STUDIES (2 Units – Year 12)

**EXCLUSIONS:**  
16688 BUSINESS AND ECONOMICS LIFE SKILLS  
16699 HSIE LIFE SKILLS

**PREREQUISITES / COREQUISITES:** NIL

**FEES:** NO FEE

## TOPICS

### Preliminary course

- Nature of business: The role and nature of business
- Business management: The nature and responsibilities of management
- Business planning: Establishing and planning a small to medium enterprise.

### HSC course

- Operations: Strategies for effective operations management
- Marketing: Development and implementation of successful marketing strategies
- Finance: Financial information in the planning and management of business
- Human resources: Human resource management and business performance.

# CHEMISTRY



## INTRODUCTION

This course is recommended for students with a keen interest in the sciences.

## COURSE SUMMARY

11050 CHEMISTRY (2 UNITS – YEAR 11)  
15050 CHEMISTRY (2 UNITS – YEAR 12)

**PRE-REQUISITS:** NIL

**NO FEE**

## TOPICS

### Year 11 Course:

- Properties and Structure of Matter
- Introduction to Quantitative Chemistry
- Reactive Chemistry
- Drivers of Reactions

### Year 12 Course:

- Equilibrium and Acid Reactions
- Acid/base Reactions
- Organic Chemistry
- Applying Chemical Ideas

# BUSINESS STUDIES



**COURSE TYPE:**



## COURSE OVERVIEW

Business activity is a feature of everyone's life. The Business Studies syllabus encompasses the theoretical and practical aspects of business in ways students encounter throughout their lives. It offers learning from the planning of a small business to the management of operations, marketing, finance and human resource in large businesses.

Business Studies fosters intellectual, social and moral development by assisting students to think critically about the role of business and its ethical responsibilities to society.

## ASSESSMENT FORMAT

*Students study contemporary business issues through case studies and apply their knowledge to problems encountered in the business environment.*

### Year 11 Requirements:

- 3 assessment tasks
- only one task may be a formal written examination.

### Year 12 Requirements:

- a maximum of four assessment tasks
- the minimum weighting for an individual task is 10%
- the maximum weighting for an individual task is 40%
- only one task may be a formal written examination with a maximum weighting of 30%.

# CHEMISTRY



**COURSE TYPE:**



## COURSE OVERVIEW

This course provides students with the opportunity to develop their knowledge, understanding and skills in relation to properties and structures of matter and a variety of chemical reactions incorporating organic compounds and acid/base equilibrium reactions.

The **Year 11** course develops the knowledge, understanding and skills in relation to the properties and structures of matter, chemical reactions and how we measure the quantities involved in these processes.

The **Year 12** course examines classes of chemicals, processes and a variety of chemical reactions.

## ASSESSMENT FORMAT

In Year 11, students will undertake three assessments, one each term. The tasks will involve a written component in the format of a report or research task, one of these will also include a practical component. The third task will be a Yearly examination in Term 3.

In Year 12, students will complete 4 assessments, one each term. Each task will involve a written component in the format of a report or research task, one of these will also include a practical component. The fourth task will be the Trial HSC examination in Term 3.

*Each year, at least one assessment task will include depth study hours.*

## CAREER PATHWAYS

Business studies can be applied across a wide range of careers and may also provide a foundation for further studies in for example economics, law or humanities.

Industries related to this course include, but are not limited to:

EDUCATION AND TRAINING  
RENTAL, HIRING AND REAL ESTATE SERVICES  
PUBLIC ADMINISTRATION AND SAFETY

FINANCIAL AND INSURANCE SERVICES



## CAREER PATHWAYS

The knowledge and skills developed in this course can be applied across a range of career pathways.

Industries and careers related to this course include, but are not limited to:

MEDICAL LABORATORY WORK  
SCIENCE RESEARCH  
HEALTH /PHARMACEUTICALS

MEDICINAL CHEMIST  
CHEMICAL ENGINEER  
QUALITY CONTROL

TOXICOLOGIST  
EDUCATION  
RESEARCH



# COMMUNITY AND FAMILY STUDIES



## INTRODUCTION

Community and Family Studies Stage 6 syllabus is designed to develop in each student an understanding of the diverse nature and interdependence of families and communities within Australian society.

## COURSE SUMMARY

**COURSE NUMBERS:**  
11060 - 2 UNITS YEAR 11  
15060 - 2 UNITS YEAR 12

**EXCLUSIONS:** 16697 (CAFS LIFE SKILLS)

**PREREQUISITES / COREQUISITES:** NIL

**FEES:** NO FEE

## TOPICS

### Year 11 Course

- Research Management
- Individuals and Groups
- Families and Communities

### HSC Year 12 Course

- Research Methodology
- Groups in Context
- Parenting and Caring

# ENGINEERING STUDIES



## INTRODUCTION

This course provides students with the opportunity to study engineering by investigating a range of applications and fields of engineering.

## COURSE SUMMARY

**COURSE NUMBERS:**  
11120 ENGINEERING STUDIES (2 Units - Year 11)  
15120 ENGINEERING STUDIES (2 Units - Year 12)

**FEES:** NO FEE

**EXCLUSIONS:** NIL

**PREREQUISITES/COREQUISITES:** NIL

Board Developed Course

## TOPICS

### Year 11 Course:

Students study four compulsory modules:

- THREE application modules based on engineering concepts and impacts through the study of engineering products in each of the following categories:
  - o Engineering Fundamentals
  - o Engineered Products and Braking Systems
- ONE focus module relating to the field of Biomedical Engineering.

### HSC course

Students study of four compulsory modules:

- TWO application modules relating to the fields of:
  - o Civil Structures and Personal and Public Transport
- TWO focus modules relating to the fields of:
  - o Aeronautical Engineering and
  - o Telecommunications Engineering.



02 4340 0246  
kariangmtn-h.school@det.nsw.edu.au



02 4340 0246  
kariangmtn-h.school@det.nsw.edu.au

# COMMUNITY AND FAMILY STUDIES

COURSE TYPE:



## COURSE OVERVIEW

Through the study of Community and Family Studies, students learn to develop:

- knowledge and understanding about resource management and its role in ensuring individual, group, family and community wellbeing
- knowledge and understanding about the contribution positive relationships make to individual, group, family and community wellbeing
- knowledge and understanding about the influence of a range of societal factors on individuals and the nature of groups, families and communities
- knowledge and understanding about research methodology and skills in researching, analysing and communicating
- skills in the application of management processes to meet the needs of individuals, groups, families and communities
- skills in critical thinking and the ability to take responsible action to promote wellbeing
- an appreciation of the diversity and interdependence of individuals, groups, families and communities.

## ASSESSMENT FORMAT

The Preliminary course consists of three mandatory modules and the indicative course time allocated to their study.

The HSC course consists of three mandatory modules representing 75 per cent of course time.

Students are required to complete an Independent Research Project (IRP) in the context of the HSC core module - Research Methodology - and forms part of the HSC internal assessment.

The focus of the IRP should be related to the course content of one or more of the following areas: individuals, groups, families, communities, resource management.

# ENGINEERING STUDIES

COURSE TYPE:



## COURSE OVERVIEW

Students learn about historical and societal influences, the scope of the profession and develop skills in technical communication. Students apply knowledge of engineering mechanics, hydraulics, electricity, electronics and engineering materials to solve engineering problems.

Both Preliminary and HSC courses offer students knowledge, understanding and skills in aspects of engineering that include communication, engineering mechanics/hydraulics, engineering materials, historical/societal influences, engineering electricity/electronics, and the scope of the profession.

## ASSESSMENT FORMAT

Students are required to produce a component of an engineering report in Engineering application module 3, Braking Systems, and then a complete engineering report in Engineering focus module 4, Biomedical Engineering.

Students are required to produce one engineering report from either of the two engineering application modules, and one from either of the two engineering focus modules.

## CAREER PATHWAYS

The knowledge and skills gained in this course can be applied across a range of career paths and may also provide a foundation for further studies in health and education.

Industries related to this course include, but are not limited to:

EDUCATION AND TRAINING  
CHILD CARE  
SOCIAL WORK

HEALTH CARE AND SOCIAL ASSISTANCE  
ARTS AND RECREATION SERVICES  
SUPPORT SERVICES



## CAREER PATHWAYS

The knowledge and skills developed in this course provide an excellent foundation for tertiary studies in engineering, manufacturing, and other related fields.

Industries related to this course include, but are not limited to:

ENGINEERING  
INFORMATION TECHNOLOGY  
MINING

CONSTRUCTION  
MANUFACTURING

EDUCATION



# ENGLISH

## ADVANCED



### INTRODUCTION

In this course, students develop their higher-order thinking skills to enhance their personal, social, educational, and vocational lives.

Please see the English Faculty before selecting this course.

### COURSE SUMMARY

FEES: \$20 textbook hire - Year 11 only  
 COURSE NO: 15140  
 2 UNITS FOR YEAR 11 (PRELIMINARY)  
 2 UNITS FOR YEAR 12 (HSC)  
 EXCLUSIONS: English (standard);  
 Fundamentals of English; English (ESL)

### TOPICS

#### Year 11 Course:

- Module 1: *Reading to Write: Transition to Senior English.*
- Modules 2 & 3: *Critical Study of Literature, and Narratives that Shape our World.*

#### Year 12 Course:

- Module 1: *Texts and Human Experiences*
- Three additional modules emphasise particular aspects of shaping meaning and representation, questions of textual integrity, ways in which texts are valued and the demonstration of the effectiveness of texts for different audiences and purposes.

# ENGLISH

## EXTENSION



### INTRODUCTION

This course provides students who undertake Advanced English with the opportunity to extend their use of language and self-expression in creative and critical ways. Designed for students with an interest in literature and a desire to pursue specialised study of English.

### COURSE SUMMARY

FEES: NIL  
 COURSE NOS:  
 11150 ENGLISH EXTENSION (1 Unit Year 11)  
 15160 ENGLISH EXTENSION (1 Unit Year 12)  
 15170 ENGLISH EXTENSION 2 (1 Unit Year 12)  
 EXCLUSIONS: English Standard,  
 English Studies

### TOPICS

#### Year 11 Course:

- Examine a key text from the past and its manifestations in one or more recent cultures.
- Explore, analyse and critically evaluate different examples of such texts in a range of contexts and media.

#### Year 12 Course:

- At least THREE prescribed texts for the elective study which must include two print texts (*as outlined in the English Stage 6 Prescriptions: Modules, Electives and Texts Higher School Certificate 2019-2023 document*).
- At least TWO related texts
- **English Extension 2** = complete a Major Work involving extensive independent investigation of complex texts

## ENGLISH ADVANCED



COURSE TYPE:



SUITABLE FOR A UNIVERSITY PATHWAY

### COURSE OVERVIEW

In the English Advanced Year 11 course, students explore, examine and analyse a range of texts which include prose fiction, drama, poetry, nonfiction, film, media and digital texts, as well as Australian texts.

In the English Advanced Year 12 course, students further strengthen their knowledge and understanding of language and literature by analysing and evaluating texts and the ways they are valued in their contexts. Students study at least four prescribed texts drawn from: Shakespearean drama; prose fiction; poetry or drama; film or media or nonfiction.

### ASSESSMENT FORMAT

Across the English Advanced Stage 6 course students are required to study:

- A range of types of texts inclusive of prose fiction, drama, poetry, nonfiction, film, media and digital texts.
- Texts which are widely regarded as quality literature, including a range of literary texts written about intercultural experiences and the peoples and cultures of Asia.
- A range of Australian texts, including texts by Aboriginal and/or Torres Strait Islander authors and those that give insights into diverse experiences of Aboriginal and/or Torres Strait Islander Peoples.
- Texts with a wide range of cultural, social and gender perspectives.

## ENGLISH EXTENSION



COURSE TYPE:



SUITABLE FOR A UNIVERSITY PATHWAY

### COURSE OVERVIEW

In the English Extension Year 11 course, students explore the ways in which aspects and concerns of texts from the past have been carried forward, borrowed from and/or appropriated into more recent culture. They consider how and why cultural values are maintained and changed.

In the English Extension 1 Year 12 course, students explore, investigate, experiment with and evaluate the ways texts represent and illuminate the complexity of individual and collective lives in literary worlds. In English Extension 2, students develop a sustained composition, and document their reflection on this process.

### ASSESSMENT FORMAT

Across the English Extension Stage 6 course students are required to study:

- A range of types of texts inclusive of prose fiction, drama, poetry, nonfiction, film, media and digital texts.
- Texts which are widely regarded as quality literature, including a range of literary texts written about intercultural experiences and the peoples and cultures of Asia.
- A range of Australian texts, including texts by Aboriginal and/or Torres Strait Islander authors and those that give insights into diverse experiences of Aboriginal and/or Torres Strait Islander Peoples.
- Texts with a wide range of cultural, social and gender perspectives.

## CAREER PATHWAYS

The knowledge and skills developed in this course can be applied across a range of career pathways.

Industries related to this course include, but are not limited to:

HUMAN RESOURCES  
 LITERATURE  
 MEDIA

EDUCATION  
 WRITING

TEACHING  
 SCRIPT WRITING



## CAREER PATHWAYS

The knowledge and skills developed in this course can be applied across a range of career pathways.

Industries related to this course include, but are not limited to:

HUMAN RESOURCES  
 LITERATURE  
 MEDIA

EDUCATION  
 WRITING

TEACHING  
 SCRIPT WRITING



# ENGLISH STANDARD



## INTRODUCTION

This course provides students with the opportunity to explore and experiment with the ways events, experiences, ideas and processes are represented in and through a range of texts.

## COURSE SUMMARY

FEES: \$20 textbook hire - Year 11 only  
 COURSE NO: 15140  
 11130 ENGLISH STANDARD (2 Units Year 11)  
 15130 ENGLISH STANDARD (2 units Year 12)  
 EXCLUSIONS: English Advanced, English Extension, English Studies

## TOPICS

### Year 11 Course:

- Module A = *Complex multimodal or digital text*, Contemporary Possibilities. This may include the study of film.
- Module B = *Substantial literary print text*, e.g. prose fiction, drama or a poetry text, which may constitute a selection of poems from the work of one poet.

### Year 12 Course:

- Minimum three types of prescribed text, from the categories: *prose fiction; poetry or drama; film or media or nonfiction texts*.
- At least two additional prescribed texts from the list provided in Module C: *The Craft of Writing*
- At least one related text in the Common module: *Texts and Human Experiences*.

# ENGLISH STUDIES



## INTRODUCTION

The English Studies course provides students with opportunities to become competent, confident and engaged communicators and to study and enjoy a breadth and variety of texts.

Note: English Studies students who intend to undertake the optional HSC examination must also be enrolled in: 15126 English Studies (2 units - Year 12).

## COURSE SUMMARY

FEES: NIL  
 COURSE NOS:  
 30105 ENGLISH STUDIES (2 Units Year 11)  
 15160 ENGLISH EXTENSION (1 unit Year 12)  
 15125 ENGLISH STUDIES (2 units Year 12)  
 EXCLUSIONS: English Standard, English Advanced, English Extension

## TOPICS

### Year 11 Course:

- Module: *Achieving through English: English in education, work and community*.
- Students study two to four additional syllabus modules (*selected based on their needs and interests*).
- Students may also study an optional teacher-developed module.

### Year 12 Course:

- Module: *Texts and Human Experiences*.
- Students study two to four additional syllabus modules (*selected based on their needs and interests*).
- Students may also study an optional teacher-developed module.

## ENGLISH STANDARD



COURSE TYPE:



## COURSE OVERVIEW

The English Standard course provides students, who have a diverse range of literacy skills, with the opportunity to analyse, study and enjoy a breadth and variety of English texts to become confident and effective communicators. English Standard offers a rich language experience that is reflected through the integrated modes of reading, writing, speaking, listening, viewing and representing. Through study of the course modules students continue to develop their skills to analyse, reconsider and refine meaning and to reflect on their own processes of responding, composing and learning.

## ASSESSMENT FORMAT

Across the English Standard Stage 6 course students are required to study:

- A range of types of texts inclusive of prose fiction, drama, poetry, nonfiction, film, media and digital texts.
- Texts which are widely regarded as quality literature, including a range of literary texts written about intercultural experiences and the peoples and cultures of Asia.
- A range of Australian texts, including texts by Aboriginal and/or Torres Strait Islander authors and those that give insights into diverse experiences of Aboriginal and/or Torres Strait Islander Peoples.
- Texts with a wide range of cultural, social and gender perspectives.

## ENGLISH STUDIES



COURSE TYPE:



## COURSE OVERVIEW

This course is designed to meet the specific needs of students who wish to refine their skills and knowledge in English and consolidate their literacy skills.

Students explore the ideas, values, language forms, features and structures of texts in a range of personal, social, cultural, academic, community and workplace contexts. Through responding to and composing texts students strengthen their ability to access and comprehend information, assess its reliability, and synthesise the knowledge gained from a range of sources for a variety of purposes.

## ASSESSMENT FORMAT

Across the English Studies Stage 6 course students are required to study:

- A range of types of texts inclusive of prose fiction, drama, poetry, nonfiction, film, media and digital texts.
- Texts which are widely regarded as quality literature, including a range of literary texts written about intercultural experiences and the peoples and cultures of Asia.
- A range of Australian texts, including texts by Aboriginal and/or Torres Strait Islander authors and those that give insights into diverse experiences of Aboriginal and/or Torres Strait Islander Peoples.
- Texts with a wide range of cultural, social and gender perspectives.

## CAREER PATHWAYS

The knowledge and skills developed in this course can be applied across a range of career pathways.

Industries related to this course include, but are not limited to:

HUMAN RESOURCES LITERATURE MEDIA  
 EDUCATION WRITING  
 TEACHING SCRIPT WRITING



## CAREER PATHWAYS

The knowledge and skills developed in this course can be applied across a range of career pathways.

Industries related to this course include, but are not limited to:

HUMAN RESOURCES LITERATURE  
 EDUCATION WRITING  
 TEACHING SCRIPT WRITING



# FOOD TECHNOLOGY



## INTRODUCTION

This course provides students with the opportunity to develop broad knowledge and understanding about nutrition, diet and health in Australia, food availability and selection.

## COURSE SUMMARY

**COURSE NUMBERS:**  
11180 FOOD TECHNOLOGY (2 Units – Year 11)  
15180 FOOD TECHNOLOGY (2 Units – Year 12)

**FEES:** \$80  
**EXCLUSIONS:** NIL  
**PREREQUISITES/COREQUISITES:** NIL  
Board Developed Course

## TOPICS

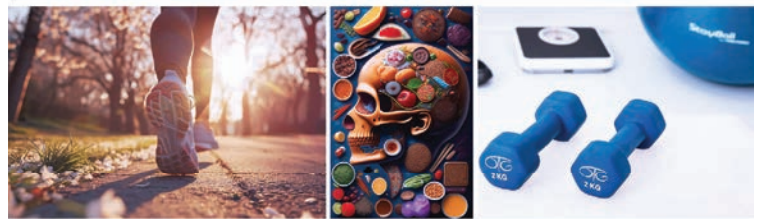
### Year 11 Course:

- Food Availability and Selection (30%)
- Food Quality (40%)
- Nutrition (30%)

### HSC course

- The Australian Food Industry (25%)
- Food Manufacture (25%)
- Food Product Development (25%)
- Contemporary Nutrition Issues (25%)

# HEALTH AND MOVEMENT SCIENCE



## INTRODUCTION

The Health and Movement Science 11–12 (2023) syllabus replaces content in Personal Development, Health and Physical Education (PDHPE) 11–12 (2009) syllabus from 2025.

## COURSE SUMMARY

**COURSE NUMBERS:**  
TBA (2 Units Year 11)  
TBA (2 UNITS YEAR 12)  
**EXCLUSIONS:**  
**PREREQUISITES / COREQUISITES:** NIL  
**FEES:** NO FEE

## TOPICS

### Preliminary course

- Health for Individuals and communities
- The body and mind in motion
- Collaborative Investigation
- Depth studies (a minimum of 2).

### HSC course

- Health in an Australian and global context
- Training for improved performance
- Depth studies (a minimum of 2).

# FOOD TECHNOLOGY



**COURSE TYPE:**



## COURSE OVERVIEW

Students investigate the Australian Food Industry, the production, processing, packaging, storage and distribution of food and the marketing of food products. Practical skills in developing, experimenting, planning, preparing and presenting food are integrated throughout the course.

*The Preliminary course will develop knowledge and understanding about food nutrients and diets for optimum nutrition, the functional properties of food, safe preparation, presentation and storage of food, sensory characteristics of food, the influences on food availability and factors affecting food selection.*

*The HSC course involves the study of: sectors, aspects, policies and legislations of the Australian Food Industry health in Australia and influences on nutritional status.*

## ASSESSMENT FORMAT

In order to meet the course requirements, students study food availability and selection, food quality, nutrition, the Australian food industry, food manufacture, food product development and contemporary nutrition issues.

It is mandatory that students undertake practical activities. Such experiential learning activities are specified in the 'learn to' section of each strand.

# HEALTH AND MOVEMENT SCIENCE



**COURSE TYPE:**



## COURSE OVERVIEW

The Year 11 and 12 course is structured to provide students with opportunities to develop and apply their knowledge, understanding and skills of health and movement concepts.

The Year 12 course comprises 3 components. Students are required to study all 3 components of the course.

### Skills applied and developed include:

- Collaboration
- Analysis
- Communication
- Creative thinking
- Problem-solving
- Research

## ASSESSMENT FORMAT

The Collaborative Investigation provides opportunities for students to develop knowledge and skills to support their own and others' health and movement.

Depth studies (*in both Year 11 and Year 12*) provide students with opportunities to delve deeper into specific topics and areas of study.

Where appropriate, case studies, practical application and research skills are to be integrated throughout student learning.

## CAREER PATHWAYS

The knowledge and skills developed in this course provide an excellent foundation for tertiary studies in hospitality, nutrition and other related fields.

Industries related to this course include, but are not limited to:

HOSPITALITY  
INFORMATION TECHNOLOGY  
HEALTH

NUTRITION  
DIETARY SCIENCE

EDUCATION



## CAREER PATHWAYS

The knowledge and skills gained in this course can be applied across a range of career paths and may also provide a foundation for further studies in the sciences, sports education, medicine and more.

Industries related to this course include, but are not limited to:

EDUCATION AND TRAINING  
PHYSIOTHERAPY  
SPORTS COACHING

PROFESSIONAL, SCIENTIFIC AND TECHNICAL  
SPORTS MEDICINE  
FITNESS AND HEALTH



# GEOGRAPHY



## INTRODUCTION

The aim of Geography Stage 6 is to enable students to study the spatial and ecological dimensions of biophysical and human phenomena in a changing world.

## COURSE SUMMARY

**COURSE NUMBERS:**  
11190 GEOGRAPHY (2 Units – Year 11)  
15190 GEOGRAPHY (2 Units – Year 12)

**EXCLUSIONS:**  
16690 GEOGRAPHY LIFE SKILLS  
16699 HSIE LIFE SKILLS

**PREREQUISITES / COREQUISITES:** NIL

**FEES:** NO FEE

## TOPICS

### Preliminary course Focus areas

- Earth's natural systems
- People, patterns and processes
- Human-environment interactions
- Geographical Investigation

### HSC course Focus areas

- Global sustainability
- Rural and urban places
- Ecosystems and global biodiversity.

Students investigate natural systems; people, patterns and processes; and human-environment interactions. They develop an understanding of the nature and value of geographical inquiry through planning and conducting a geographical investigation.

# INDUSTRIAL TECHNOLOGY TIMBER



## INTRODUCTION

Industrial Technology at Stage 6 will develop a student's knowledge and understanding of a selected industry and its related technologies, highlighting the importance of design, management and production through practical experiences.

## COURSE SUMMARY

**COURSE NUMBER:**  
15200 INDUSTRIAL TECHNOLOGY  
(2 Units – for each Year 11 and Year 12)

**FEES:** \$60 + MAJOR WORKS  
**PREREQUISITES/COREQUISITES:** NIL

**EXCLUSIONS:** Some Industry Focus areas with similar VET Curriculum Framework streams and Content Endorsed Courses.

## TOPICS

### Year 11 Course:

- Industry Study (15%)
- Design (10%)
- Management and Communication (20%)
- Production (40%)
- Industry Related Manufacturing Technology (15%).

### HSC course

- Industry Study (15%)
- Major Project (60%)
- Design, Management and Communication
- Industry Related Manufacturing Technology (25%)



02 4340 0246  
kariongmtn-h.school@det.nsw.edu.au



02 4340 0246  
kariongmtn-h.school@det.nsw.edu.au

# GEOGRAPHY

**COURSE TYPE:**



## COURSE OVERVIEW

Geography is the study of places, people and environments, and their interrelationships, and integrates knowledge from the natural sciences, social sciences and humanities.

The course develops students' sense of curiosity about the places, environments and cultures that make up our world, enabling them to be more attuned to its diversity and complexity. Geography promotes understanding of the role of natural systems and human activity in shaping the world and how they may vary from place to place.

## ASSESSMENT FORMAT

*Students complete a Senior Geography Project (SGP) in the Preliminary course and should undertake 12 hours of fieldwork in both the Preliminary and HSC courses.*

### Year 11 requirements:

- 3 assessment tasks
- only one task may be a formal written examination.
- one task must be the Senior Geography Project.

### Year 12 requirements:

- a maximum of four assessment tasks
- the minimum weighting for an individual task is 10%
- the maximum weighting for an individual task is 40%
- only one task may be a formal written examination with a maximum weighting of 30%.

# INDUSTRIAL TECHNOLOGY TIMBER

**COURSE TYPE:**



## COURSE OVERVIEW

Industrial Technology Stage 6 consists of project work and an industry study that will develop a broad range of skills and knowledge related to the focus area chosen for the course.

The Focus Areas include: Graphics Technologies; Multimedia Technologies OR Timber Products and Furniture Technologies.

## ASSESSMENT FORMAT

In the Preliminary course, students must design, develop and construct a number of projects. Each project will include a management folio. Each project may emphasise different areas of the preliminary course content. Students also undertake the study of an individual business within a focus area industry.

In the HSC course, students design, develop and construct a Major Project with a management folio. They will also undertake a study of the overall industry related to the specific focus area industry.

## CAREER PATHWAYS

Skills gained through studying geography can be applied across a wide range of careers and may also provide a foundation for further studies in for example humanities, media or agriculture.

Industries related to this course include, but are not limited to:

EDUCATION AND TRAINING  
PUBLIC ADMINISTRATION AND SAFETY  
PROFESSIONAL, SCIENTIFIC AND TECHNICAL SERVICES

AGRICULTURE, FORESTRY AND FISHING



## CAREER PATHWAYS

The knowledge and skills developed in this course provide an excellent foundation for tertiary or vocational studies in construction, design and other related fields.

Industries related to this course include, but are not limited to:

CARPENTRY  
INFORMATION TECHNOLOGY  
MINING

CONSTRUCTION  
MANUFACTURING  
DESIGN AND DEVELOPMENT

EDUCATION



# LEGAL STUDIES



## INTRODUCTION

Legal Studies is a humanities subject that will give students the critical thinking and communication skills necessary to find employment in a number of fields including law, journalism and government.

## COURSE SUMMARY

**COURSE NUMBERS:**  
 11220 LEGAL STUDIES (2 Units – Year 11)  
 15220 LEGAL STUDIES (2 Units – Year 12)

**EXCLUSIONS:**  
 16689 CITIZENSHIP & LEGAL STUDIES LIFE SKILLS  
 16699 HSIE LIFE SKILLS

**PREREQUISITES / COREQUISITES:** NIL

**FEES:** NO FEE

## TOPICS

- Preliminary course Focus areas**
- Part I – The Legal System
  - Part II – The Individual and the Law
  - Part III – The Law in Practice
- HSC course Focus areas**
- Core Part I: Crime
  - Core Part II: Human Rights
  - Part III: Two options
- Two options are chosen from:*
- Consumers
  - Global environment and protection
  - Family
  - Indigenous peoples
  - Shelter
  - Workplace
  - World order

# MATHEMATICS ADVANCED



## INTRODUCTION

The Mathematics Advanced course is focused on enabling students to appreciate that mathematics is a unique and powerful way of viewing the world to investigate order, pattern, and generality.

The course provides students with the opportunity to develop ways of thinking in which problems are explored through reflection and reasoning.

## COURSE SUMMARY

**COURSE NUMBERS:**  
 11255 MATHEMATICS ADVANCED  
 (2 Units for each Year 11 and Year 12)

**EXCLUSIONS:** MATHEMATICS STANDARD

**FEES:** NO FEE

## TOPICS

- Year 11 Course:**
- Functions
  - Trigonometric Functions
  - Calculus
  - Exponential and Logarithmic Functions
  - Statistical Analysis
- Year 12 Course:**
- Functions
  - Trigonometric Functions
  - Calculus
  - Financial Mathematics
  - Statistical Analysis

# LEGAL STUDIES



**COURSE TYPE:**



## COURSE OVERVIEW

This course provides students with opportunities to develop their knowledge and understanding of the nature and functions of law and law-making, the development of Australian and international legal systems, the Australian constitution and law reform.

Students investigate the key areas of law, justice and human rights through a variety of focus studies which consider how changes in societies influence law reform.

## ASSESSMENT FORMAT

- Year 11 requirements:**
- 3 assessment tasks
  - only one task may be a formal written examination.
- Year 12 requirements:**
- a maximum of four assessment tasks
  - the minimum weighting for an individual task is 10%
  - the maximum weighting for an individual task is 40%
  - only one task may be a formal written examination with a maximum weighting of 30%.
- The external HSC examination measures student achievement in a range of syllabus outcomes.*

# MATHEMATICS ADVANCED



**COURSE TYPE:**



UNIVERSITY PATHWAY  
 OR VOCATIONAL PATHWAY

## COURSE OVERVIEW

The Stage 6 Mathematics Advanced course is designed to foster an appreciation of mathematics as a discipline of study and to develop a sound understanding of mathematical concepts, processes, and skills. It is a calculus-based course catering to students who are interested in mathematics that is more rigorous than the Mathematics Standard course.

Mathematics Advanced emphasises the development of logical reasoning and analytical skills, preparing students for a variety of post-school pathways, including tertiary study in a range of disciplines that require a solid foundation in mathematics.

## ASSESSMENT FORMAT

- All students studying the Mathematics Advanced course will sit for an HSC examination.
- Year 11:**
- School-based Assessments: A mix of informal and formal assessments including topic tests, assignments, and an investigative task.
  - Yearly Examination: A comprehensive exam covering all topics studied throughout the year.
- Year 12:**
- School-based Assessments: Continuation of rigorous and varied assessment tasks, with an increased focus on preparation for the HSC examination.
  - Trial HSC Examination: An opportunity to experience the format and rigour of the final HSC exam.

## CAREER PATHWAYS

Skills gained through studying legal studies can be applied across a wide range of careers and may also provide a foundation for further studies in for example humanities, law and journalism.

Industries related to this course include, but are not limited to:

EDUCATION AND TRAINING  
 PUBLIC ADMINISTRATION AND SAFETY  
 PROFESSIONAL, SCIENTIFIC AND TECHNICAL SERVICES

FINANCIAL AND INSURANCE SERVICES



## CAREER PATHWAYS

The Stage 6 Mathematics Advanced course is relevant to a variety of fields that value analytical thinking, problem-solving, and quantitative reasoning.

Industries related to this course include, but are not limited to:

DATA ANALYSIS  
 EDUCATION  
 ENGINEERING

FINANCE AND ECONOMICS  
 SCIENCE AND TECHNOLOGY  
 STATISTICS



# MATHEMATICS

## EXTENSION



### INTRODUCTION

Mathematics Extension 1 is focused on enabling students to develop a thorough understanding of and competence in further aspects of mathematics. The course provides opportunities to develop rigorous mathematical arguments and proofs - and to use mathematical models more extensively.

### COURSE SUMMARY

COURSE NUMBERS MATHEMATICS EXTENSION 1:  
11250 (1 Unit - Year 11)  
15250 (1 Unit - Year 12)

FEES: NO FEES  
EXCLUSIONS: MATHEMATICS STANDARD

The Mathematics Advanced course will be taught concurrently with this course.

### TOPICS

#### Year 11 Course:

- Functions
- Trigonometric Functions
- Calculus
- Combinatorics

#### Year 12 Course:

- Proof
- Vectors
- Trigonometric Functions
- Calculus
- Statistical Analysis

# MATHEMATICS

## NUMERACY



### INTRODUCTION

The Numeracy course supports students to develop the functional numeracy skills required to become active and successful participants in society.

### COURSE SUMMARY

COURSE NUMBERS:  
30130 NUMERACY (2 Units - Year 11)  
30140 NUMERACY (2 Units - Year 12)

FEES: NO FEE

### TOPICS

#### Year 11:

- **Module 1**  
Whole numbers, Operations, Distance, Area and Volume, Time, Data, Graphs and Tables
- **Module 2**  
Fractions and Decimals, Operations, Metric relationships, Length, Mass and Capacity, Data, Graphs and Tables

#### Year 12:

- **Module 3**  
Percentages, Operations, Finance, Location, Time and Temperature, Space and Design
- **Module 4**  
Rates and ratios, Statistics and Probability, Exploring with NRMT

## MATHEMATICS EXTENSION

COURSE TYPE:



UNIVERSITY PATHWAY  
OR VOCATIONAL PATHWAY

### COURSE OVERVIEW

The Stage 6 Mathematics Extension course is an intellectually enriching program tailored for students who exhibit a strong aptitude and enthusiasm for mathematics. It covers advanced mathematical theories and applications, encouraging students to develop rigorous mathematical arguments, engage in complex problem-solving, and apply critical thinking skills.

The curriculum covers a range of topics including proof, vectors, calculus, and statistical analysis, all aimed at providing students with a profound understanding of mathematics that is both theoretical and practical.

### ASSESSMENT FORMAT

All students studying the Mathematics Extension 1 course will sit for an HSC examination in two maths courses.

#### Year 11:

- School-based Assessments: A mix of informal and formal assessments including topic tests, assignments, and an investigative task.
- Yearly Examination: A comprehensive exam covering all topics studied throughout the year.

#### Year 12:

- School-based Assessments: Continuation of rigorous and varied assessment tasks, with an increased focus on preparation for the HSC examination.
- Trial HSC Examination: An opportunity to experience the format and rigour of the final HSC exam.

## MATHEMATICS NUMERACY

COURSE TYPE:



### COURSE OVERVIEW

The Numeracy course builds on the knowledge, skills and understanding presented in the K-10 curriculum. It supports students to develop the functional numeracy skills required to become active and successful participants in society.

The Numeracy Stage 6 CEC Syllabus is designed to offer opportunities for students to reason numerically and think mathematically. Numerical reasoning and mathematical thinking are supported by an atmosphere of questioning, communicating, reasoning and reflecting and are engendered by opportunities to generalise, challenge, find connections and to think critically and creatively.

### ASSESSMENT FORMAT

All students studying the Mathematics Standard course in Stage 6 have the opportunity to enhance their numeracy skills and capabilities. The content of the course aligns with Level 3 of the Australian Core Skills Framework.

The Numeracy course provides opportunities for students to develop 21st-century knowledge, skills, understanding, values and attitudes. As part of this, students are encouraged to learn to use appropriate technology as an effective support for numerical and mathematical activities.

## CAREER PATHWAYS

The knowledge and skills developed in this course provide an excellent foundation for tertiary studies in mathematics, engineering, and other related fields.

Industries related to this course include, but are not limited to:

ECONOMICS  
EDUCATION  
ENGINEERING

FINANCE AND INSURANCE  
INFORMATION TECHNOLOGY  
SCIENCE AND RESEARCH



## CAREER PATHWAYS

The knowledge and skills developed in this course provide an excellent foundation for a range of career pathways.

Industries related to this course include, but are not limited to:

RETAIL  
EDUCATION  
COMMUNICATIONS

DATA ENTRY  
INFORMATION TECHNOLOGY  
ELECTRICIAN, PLUMBER, BUILDER



# MATHEMATICS STANDARD



## INTRODUCTION

The Mathematics Standard Year 11 course is a common course for all students studying the Mathematics Standard Syllabus.

In Year 12, students can elect to study either the Standard 1 course or the Standard 2 course.

## COURSE SUMMARY

**COURSE NUMBERS:**  
11236 MATHEMATICS STANDARD (2 Units – Year 11)  
15231 MATHEMATICS STANDARD (2 Units – Year 12)

**NOTE:** STUDENTS WHO CHOOSE MATHEMATICS STANDARD 1 AND WISH TO SIT THE OPTIONAL HSC EXAM MUST ALSO BE ENROLLED IN 15232

**FEES:** NO FEE

## TOPICS

### Year 11 Course:

- Algebra
- Measurement
- Financial Mathematics
- Statistical Analysis

### Year 12 Course:

- Algebra
- Measurement
- Financial Mathematics
- Further Statistical Analysis
- Networks and Paths

# MODERN HISTORY



## INTRODUCTION

This course provides students with opportunities to develop and apply their understanding of methods and issues involved in the investigation of modern history.

## COURSE SUMMARY

**COURSE NUMBERS:**  
11270 MODERN HISTORY (2 Units – Year 11)  
15270 MODERN HISTORY (2 Units – Year 12)

**EXCLUSIONS:**  
16673 MODERN HISTORY LIFE SKILLS  
16699 HSIE LIFE SKILLS

**PREREQUISITES:** NIL

**FEES:** NO FEE

## TOPICS

### Year 11

The Year 11 course comprises three sections:

- Investigating Modern History
- Historical Investigation
- The Shaping of the Modern World

*Historical concepts and skills are integrated with the studies undertaken in Year 11.*

### Year 12

The Year 12 course comprises four sections:

- Core Study: Power and Authority in the Modern World 1919–1946
- One 'National Studies' topic
- One 'Peace and Conflict' topic
- One 'Change in the Modern World' topic

# MATHEMATICS STANDARD



**COURSE TYPE:**



UNIVERSITY PATHWAY  
OR VOCATIONAL PATHWAY

## COURSE OVERVIEW

Mathematics Standard students use mathematics to make informed decisions in their daily lives. Students develop understanding and competence in mathematics through real-world applications. These skills can be used in a range of concurrent HSC subjects.

Mathematics Standard 1 improves numeracy by building student confidence and making mathematics meaningful. Numerate students can manage situations or solve problems in everyday life, work or further learning.

## ASSESSMENT FORMAT

All students studying the Mathematics Standard course in Stage 6 have the opportunity to enhance their numeracy skills and capabilities.

Students studying the Mathematics Standard 1 course may elect to undertake an optional HSC examination.

To be eligible for an ATAR, students studying the Mathematics Standard 1 course must undertake a pattern of study to satisfy the ATAR requirements and complete the optional HSC examination.

# MODERN HISTORY



**COURSE TYPE:**



## COURSE OVERVIEW

The Year 11 course provides students with opportunities to develop and apply their understanding of methods and issues involved in the investigation of modern history. Students engage in the study of a range of people, ideas, movements, events and developments that have shaped the modern world.

In Year 12, students apply their understanding of sources. Through a core study, students investigate the nature of power and authority from 1919 to 1946. They also study key features in the history of one nation, one study in peace and conflict, and one study of change in the modern world.

## ASSESSMENT FORMAT

In the Year 11 course, students undertake at least TWO case studies.

- One case study must be from Europe, North America or Australia, AND
- One case study must be from Asia, the Pacific, Africa, the Middle East or Central/South America.

In Year 12, students are required to study at least one non-European/non-Western topic from a set list of topics provided within the syllabus.

## CAREER PATHWAYS

The Stage 6 Mathematics Advanced course provides an excellent foundation for a range of career pathways.

Industries related to this course include, but are not limited to:

RETAIL  
INFORMATION AND MEDIA  
RENTAL, HIRING AND REAL ESTATE

FINANCE AND INSURANCE  
TELECOMMUNICATIONS  
COMMERCE



## CAREER PATHWAYS

The knowledge and skills developed in this course can be applied across a range of career pathways.

Industries related to this course include, but are not limited to:

ARTS AND RECREATION  
RESEARCH  
PUBLIC ADMINISTRATION AND SAFETY

EDUCATION AND TRAINING  
LIBRARIAN



# MUSIC 1



## INTRODUCTION

This course provides students with the opportunity to acquire knowledge, skills, understanding and experiences within a broad musical context.

## COURSE SUMMARY

**COURSE NUMBERS:**  
11280 MUSIC 1 (2 Units – Year 11)  
15290 MUSIC 1 (2 Units – Year 12)

**PREREQUISITES:** NIL

**EXCLUSIONS:** MUSIC 2, MUSIC EXTENSION, LIFE SKILLS COURSES

**FEES:** NO FEE

## TOPICS

TOPICS AVAILABLE TO STUDY IN MUSIC 1:

- An instrument and its repertoire
- Australian music
- Baroque music
- Jazz
- Medieval music
- Methods of notating music
- Music and religion
- Music and the related arts
- Music for large ensembles
- Music for radio, film, television and multimedia
- Music for small ensembles
- Music in education
- Music of a culture
- Music of the 18th century
- Music of the 19th century
- Music of the 20th and 21st centuries
- Popular music
- Renaissance music
- Rock music
- Technology and its influence on music
- Theatre music

# PHYSICS



## INTRODUCTION

The Physics Stage 6 Syllabus involves the study of matter and its motion through space and time, along with related concepts that include energy and force.

## COURSE SUMMARY

**COURSE NUMBERS:**  
11310 PHYSICS (2 Units Year 11/12)  
15330 PHYSICS (2 Units Year 11/12)

**EXCLUSIONS:** NIL

**PREREQUISITES / COREQUISITES:** NIL

**FEES:** NO FEE

## TOPICS

**Preliminary course**

- Module 1 Kinematics
- Module 2 Dynamics
- Module 3 Waves and Thermodynamics
- Module 4 Electricity and Magnetism

**HSC course**

- Module 5 Advanced Mechanics
- Module 6 Electromagnetism
- Module 7 The Nature of Light
- Module 8 From the Universe to the Atom.

# MUSIC 1



**COURSE TYPE:**



## COURSE OVERVIEW

Students study the concepts of music through the learning experiences of performance, composition, musicology and aural within the context of a range of styles, periods and genres.

Students study three topics in each year (different topics in Preliminary and HSC, although one topic may be chosen for greater in-depth study across the two years).

In addition to core studies in performance, composition, musicology and aural, students select three electives from any combination of performance, composition and musicology. These electives must represent each of the three topics studied in the course.

## ASSESSMENT FORMAT

Topics are chosen from a list of 21 topics which covers a broad range of styles, periods and genres.

Students selecting Composition electives will be required to compile a portfolio of work as part of the process of preparing a submitted work. The portfolio may be requested by NESA to validate authorship of the submitted work.

# PHYSICS



**COURSE TYPE:**



## COURSE OVERVIEW

The Year 11 course develops students' knowledge, understanding and skills relevant to the study of motion, how we describe it and what causes it. The course also examines energy in its different forms, and how we describe and measure electricity and magnetism and their interrelated effects.

The Year 12 course provides avenues for students to apply the concepts introduced in Year 11 and to motion in two dimensions, electromagnetism, the nature of light, and the atomic properties of matter.

## ASSESSMENT FORMAT

In Year 11, students will undertake three assessments, one each term. The tasks will involve a written component in the format of a report or research task, one of these will also include a practical component. The third task will be a Yearly examination in Term 3.

In Year 12, students will complete 4 assessments, one each term. Each task will involve a written component in the format of a report or research task, one of these will also include a practical component. The fourth task will be the Trial HSC examination in Term 3.

*Each year, at least one assessment task will include depth study hours.*

## CAREER PATHWAYS

The knowledge and skills developed in this course can be applied across a range of career pathways.

Industries related to this course include, but are not limited to:

MUSICIAN      MUSIC PRODUCTION      PERFORMANCE  
EVENTS MANAGEMENT      EDUCATION



## CAREER PATHWAYS

Physics can be applied across a range of career paths and may also provide a foundation for further studies in for example engineering, manufacturing and mining.

Industries related to this course include, but are not limited to:

EDUCATION AND TRAINING      MANUFACTURING  
CONSTRUCTION      MINING  
ELECTRICITY, GAS, WATER AND WASTE SERVICES



# SCHOOL TO WORK



**EPP**

Education Pathways Program

**Go Forward**

Leadership Skills Program

**SBATS**

Skills Based Assessment Tool



## INTRODUCTION

The 'School to Work' (S2W) Pathway is a practical, hands-on program designed for Year 11 students, who are ready to transition into the workforce or further vocational training.

Running over a full calendar year, this pathway supports students in developing the skills, qualifications, and experience needed for employment or TAFE-level education.

## COURSE SUMMARY

S2W blends essential academic skills with vocational training, helping students work towards a nationally recognised qualification in Building and Construction Pathways (Certificate II) while completing their senior studies.

The program focuses on real-world application, offering a flexible and supportive environment tailored to individual career goals.

## TOPICS

Students in the S2W pathway will study:

- Building and Construction Pathways (VET Certificate II)
- English Studies (vocational literacy focus)
- Numeracy (practical numeracy for work and life)
- Work Studies (employability skills and workplace knowledge)
- Sport, Lifestyle, and Recreation (active engagement and teamwork)
- OPTIONAL - TVET course of choice (aligned with students' personal career interests).

Course Type:

- Vocational Pathway (VET & TVET Integrated)
- Non-HSC and Non-ATAR - Employment and Training Focused

# SOCIETY AND CULTURE



## INTRODUCTION

Society and culture allows students to develop an understanding of the key concepts of persons, societies, cultures, environments and time – the relationships between and among them.

## COURSE SUMMARY

COURSE NUMBERS:

11330 SOCIETY AND CULTURE (2 Units – Year 11)

15350 SOCIETY AND CULTURE (2 Units – Year 12)

EXCLUSIONS:

16692 SOCIETY AND CULTURE LIFE SKILLS

16699 HSIE LIFE SKILLS

PREREQUISITES / COREQUISITES: NIL

FEES: NO FEE

## TOPICS

Preliminary course Focus areas

- The Social and Cultural World
- Personal and Social Identity
- Intercultural Communication

HSC course Focus areas

- Social and Cultural Continuity and Change
- The Personal Interest Project (PIP): An individual research project

Two options are chosen from:

- Popular Culture
- Belief Systems and Ideologies
- Social Inclusion and Exclusion
- Social Conformity and Nonconformity

**KARIONG MOUNTAINS**  
HIGH SCHOOL  
UNITY KNOWLEDGE RESPECT

02 4340 0246  
kariongmta-h.school@det.nsw.edu.au

**KARIONG MOUNTAINS**  
HIGH SCHOOL  
UNITY KNOWLEDGE RESPECT

02 4340 0246  
kariongmta-h.school@det.nsw.edu.au

# SCHOOL TO WORK



## COURSE OVERVIEW

The S2W Pathway is structured to give students the best start to working life or further training. With a mix of classroom-based and industry-based learning, students gain valuable insight into workplace expectations, technical skills, and personal development.

The program is tailored to support success in future employment.

## ASSESSMENT FORMAT

- Competency-based assessments for VET/TVET courses
- No external HSC exams
- Mandatory Work Placement for VET courses
- Work Experience opportunities.

# SOCIETY AND CULTURE



COURSE TYPE:



ATAR



NON-ATAR



BOARD DEVELOPED



BOARD ENDORSED

## COURSE OVERVIEW

Society and Culture develops social and cultural literacy and a clear understanding of the interactions of persons, society, culture, environment and time - and how these shape human behaviour.

The course draws on cross-disciplinary concepts and social research methods, and students undertake research in an area of particular interest to them. The research findings are presented for external assessment in the Personal Interest Project (PIP).

## ASSESSMENT FORMAT

Year 11 requirements:

- 3 assessment tasks
- only one task may be a formal written examination.

Year 12 requirements:

- a maximum of four assessment tasks
- the minimum weighting for an individual task is 10%
- the maximum weighting for an individual task is 40%
- only one task may be a formal written examination with a maximum weighting of 30%.

The external HSC examination measures student achievement in a range of syllabus outcomes.

## CAREER PATHWAYS

Graduates of the S2W pathway are well-prepared for:

- Apprenticeships and traineeships
- Entry-level roles in building and construction, trades, and more
- TAFE and further vocational education
- Supported transition into full-time employment

Industries related to this course include, but are not limited to:

TRADE  
HEALTH CARE

HOSPITALITY  
SERVICE INDUSTRY



## CAREER PATHWAYS

Society and Culture incorporates skills and topics, which can be applied across a wide range of careers and may also provide a foundation for further studies in for example humanities, media, arts and education.

Industries related to this course include, but are not limited to:

ARTS AND RECREATION SERVICES  
HEALTH CARE AND SOCIAL ASSISTANCE  
INFORMATION MEDIA AND TELECOMMUNICATIONS

EDUCATION AND TRAINING  
PUBLIC ADMINISTRATION AND SAFETY



# VET FINANCIAL SERVICES



## INTRODUCTION

By enrolling in this VET qualification with the NSW Department of Education RTO 90333, you are choosing to participate in a program of study which will provide you a pathway towards, HSC accreditation and a nationally recognised qualification (dual accreditation).

<https://training.gov.au/training/details/FNS30122>

## COURSE DETAILS

### FNS30122 CERTIFICATE III IN FINANCIAL SERVICES

To receive this qualification, you must meet the assessment requirements of FNS30122 Certificate III in Financial Services.

## UNITS OF COMPETENCY

### Competency-Based Assessment

In this course you will work to develop the skills and knowledge described in each unit of competency. To be assessed as competent you must demonstrate your ability to satisfactorily complete the tasks required in the assessments.

### This is a Board Developed Course

*External Assessment (optional HSC examination for ATAR purposes)*

*The Higher School Certificate examination for Financial Services is only available after completion of 240 indicative hours and will involve a written examination consisting of multiple-choice, short answers and extended response items. The examination is independent of the competency-based assessment undertaken during the course and has no impact on your eligibility to receive a vocational qualification.*

# VET HOSPITALITY



## INTRODUCTION

Students successfully completing this program will be eligible to receive a nationally recognised qualification SIT20322 Certificate II in Hospitality.

## COURSE DETAILS

### SIT20322 CERTIFICATE II IN HOSPITALITY

26521.2 Units x 2 Years - NESA HSC Examination Code 26589. Mandatory work placement hours for NESA: Students must complete a minimum of 70 hours work placement over 2 years.

## UNITS OF COMPETENCY

### HSC Course:

- SITHIND006 - Source and use information on the hospitality industry.
- SITHFAB024 - Prepare and serve non-alcoholic beverages.
- BSBTWK201 - Work effectively with others.
- SITHFAB025 - Prepare and serve espresso coffee.
- SITHFAB027 - Serve food and beverages.
- SITHIND007 - Use hospitality skills effectively.

Additional units of competency may be included to address NESA requirements.



02 4340 0246  
kariangmtn-h.school@det.nsw.edu.au



02 4340 0246  
kariangmtn-h.school@det.nsw.edu.au

## VET FINANCIAL SERVICES

### VET COURSE:

### TASK NAMES

Tasks are studied across Year 11 and Year 12, with assignments scheduled throughout the course.

All competencies will be finalised and entered into NESA by end of Week 1 Term 4, 2024.

### Mandatory course requirements

You must complete 240 indicative hours of course work and a minimum of 70 hours work placement. Not meeting these requirements will incur an 'N' determined as required by NESA.

### ASSESSMENT FORMAT

By enrolling in this VET qualification with the NSW Department of Education RTO 90333, you are choosing to participate in a program of study which will provide you a pathway towards, HSC accreditation and a nationally recognised qualification (dual accreditation). To receive this qualification, you must meet the assessment requirements of FNS30122 Certificate III in Financial Services

<https://training.gov.au/training/details/FNS30122>. You will be expected to complete all the requirements of the Registered Training Organisation and NESA. To gain the full qualification you must achieve 12 units of competency. A statement of attainment towards the qualification is possible if at least one unit of competency is achieved.

## VET HOSPITALITY

### VET COURSE:

### TASK NAMES

- The hospitality industry
- Beverage making 101
- Working 9 to 5



### ASSESSMENT FORMAT

All competencies will be finalised and entered into NESA by end of Week 1 Term 4, 2024.

*The assessment components in this course are competency based. This means that students need to demonstrate that they have gained and can apply the specific knowledge and skills of each unit of competency. Competency assessment is graded as "not yet competent" or "competent". In some cases, other descriptive words may be used leading up to "competent". A course mark is not allocated.*

## CAREER PATHWAYS

Transferrable industry skills gained in this course include customer (client) service skills, using technology to organise information, communication skills and problem solving.

Pathways related to this course include, but are not limited to:

INVESTMENT ADVISORS  
BANKING  
WEALTH MANAGEMENT

FINANCIAL PLANNERS  
INSURANCE SERVICES  
SUPERANNUATION SERVICES



## CAREER PATHWAYS

This course can provide a foundation for further studies and may also provide an introduction to students wishing to pursue a career in hospitality and food preparation.

Pathways related to this course include, but are not limited to:

HOSPITALITY  
CAFÉ BARISTA  
ENTERTAINMENT

CHEF  
KITCHEN HAND



# VET IDT

## INFORMATION AND DIGITAL TECHNOLOGY



### INTRODUCTION

Learn about diagnostic testing, software and programming techniques, along with online platforms, apps and development.

### COURSE DETAILS

Depending on the achievement of units of competency, the possible qualification outcome is a Statement of Attainment towards ICT30120 CERTIFICATE III IN INFORMATION TECHNOLOGY.

### UNITS OF COMPETENCY

#### HSC Course

- ICTSAS305 - Provide ICT advice to clients.
- ICTSAS308 - Run standard diagnostic tests.
- ICTPRG302 - Apply introductory programming techniques.
- SBCRT301 - Develop and extend critical and creative thinking skills.
- ICTICT214 - Operate application software packages.
- ICTWEB306 (OPTIONAL) - Develop web presence using social media.

# VET MUSIC INDUSTRY



### INTRODUCTION

This course gives you real-world skills in areas like live sound, recording, performance, and working behind the scenes at music events.

You'll get to use professional equipment, work on actual gigs, and build a portfolio that can lead to further study or work in the creative industries.

### COURSE DETAILS

**CUA30920 CERTIFICATE III IN MUSIC**  
Students successfully completing this program will be eligible to receive a Certificate III in Music. NESA course name and information: [Music Industry](#)

### UNITS OF COMPETENCY

#### HSC Course:

- CUAMPF315 - Develop and perform musical improvisation.
- CUAMCP313 - Create simple musical pieces using music technology.
- CUAMPF314 - Make music demos.
- CUAMCP311 - Create simple musical compositions.
- CUAMPF314 - Plan a career in the creative arts industry.

Additional units of competency may be included to address NESA requirements.



02 4340 0246  
kariangmtn-h.school@det.nsw.edu.au



02 4340 0246  
kariangmtn-h.school@det.nsw.edu.au

## VET INFORMATION AND DIGITAL TECHNOLOGY

### VET COURSE:

### TASK NAMES

- ICT Advice
- Programming
- Social

Depending on the achievement of units of competency, the possible qualification outcome is a Statement of Attainment towards ICT30120 Certificate III in Information Technology.



### ASSESSMENT FORMAT

The assessment components in this course are competency based. This means that students need to demonstrate that they have gained and can apply the specific knowledge and skills of each unit of competency. Competency assessment is graded as "not yet competent" or "competent". In some cases, other descriptive words may be used leading up to "competent". A course mark is not allocated.

For students sitting the optional HSC exam, an estimated mark is required. This mark will be calculated using the Preliminary exam 40% and the Trial Exam 60%.

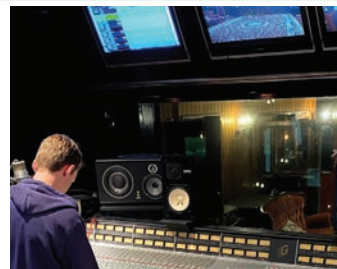
## VET MUSIC INDUSTRY

### VET COURSE:

### TASK NAMES

Tasks 1 – 5 are studied across Year 11 and Year 12, with assignments scheduled throughout the course.

All competencies will be finalised and entered into NESA by end of Week 1 Term 4, 2024.



### ASSESSMENT FORMAT

Music Industry experience is a mandatory component of this course.

Total number of units = 11.

3 core units plus 8 elective units, of which:

- at least 6 must be from the elective units listed in Groups A-D, with no more than 2 of these units from Group E
- up to 2 may be from the listed elective units (with the exception of Group E) or from this or any currently endorsed Certificate II or above training package qualification or accredited course.

The assessment components in this course are competency based. This means that students need to demonstrate that they have gained and can apply the specific knowledge and skills of each unit of competency. Competency assessment is graded as "not yet competent" or "competent". In some cases, other descriptive words may be used leading up to "competent". A course mark is not allocated.

## CAREER PATHWAYS

This course can provide a foundation for further studies and/or a pathway for gaining employment in the information technology sector.

Pathways related to this course include, but are not limited to:

CUSTOMER SUPPORT  
SOFTWARE DEVELOPMENT  
TECHNICAL SUPPORT

INFORMATION TECHNOLOGY  
APP DEVELOPMENT AND DESIGN  
RESEARCH



## CAREER PATHWAYS

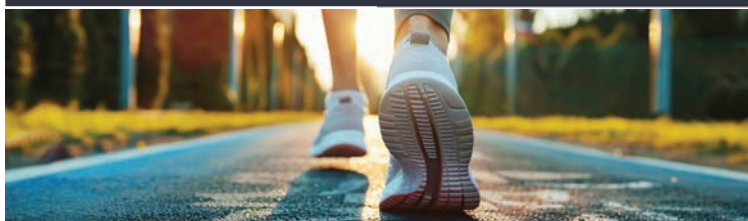
This course can provide a foundation for further studies in music and may also provide an introduction to students wishing to pursue a career in music.

Pathways related to this course include, but are not limited to:

MUSIC PRODUCTION SONG WRITER PRODUCER ROAD CREW  
STUDIO ASSISTANT MUSIC PERFORMANCE SESSION MUSICIAN



# VET SPORT COACHING



## INTRODUCTION

Learn about coaching, fitness and sport in this course, where students develop an understanding and skills to work in a community coaching role.

## COURSE DETAILS

Depending on the achievement of units of competency, the possible qualification outcome is a Statement of Attainment towards the SIS30521 CERTIFICATE III IN SPORT COACHING.

## UNITS OF COMPETENCY

### HSC Course

- HLTWHS001 Participate in workplace health and safety.
- SISXIND006 Conduct sport, fitness and recreation events.
- SSISSC0002 Work in a community coaching role.
- SSISSC0005 Continuously improve coaching skills and knowledge.
- Elective choice (select 1 of 3 options).

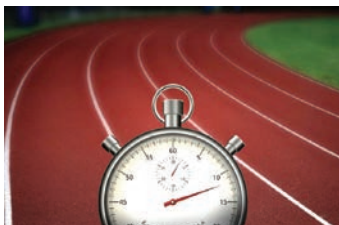
## VET SPORT COACHING

### VET COURSE:

## TASK NAMES

- Course introduction
- Tournament Time (40 hours)
- The Community Coach (50 hours)
- Officiating in Sport

Units of Work 'Tasks' may be introduced early to complement the delivery of context and the requirement of certain units of work.



## ASSESSMENT FORMAT

Ongoing assessment of skills and knowledge is collected throughout the course and forms part of the evidence of competence of students.

The assessment components in this course are competency based. This means that students need to demonstrate that they have gained and can apply the specific knowledge and skills of each unit of competency. Competency assessment is graded as "not yet competent" or "competent". In some cases, other descriptive words may be used leading up to "competent". A course mark is not allocated.

**This course is not HSC examinable.**

## CAREER PATHWAYS

This course can provide a foundation for further studies and/or a pathway for gaining employment in the health and fitness industry.

Pathways related to this course include, but are not limited to:

