



# LAWSON'S LATEST

7 November, 2025 | Term 4, Week 4  
THE HENRY LAWSON HIGH SCHOOL

## SRC Induction Assembly

We are pleased to announce the Student Representative Council for 2026 at The Henry Lawson High School. These students have been selected to represent their peers and contribute to the continued growth and success of our school community.

SRC Representatives:

- Year 8: Baxter Sheehan & Jessie Pollock
- Year 9: Saran Jobymon & Penny Hughes
- Year 10: Jack Hazell & Keira Chown
- Year 11: William O'Connor Johnston, Jack Death, Marley Loader, Leonise Balon & Matilda Smithers

We would also like to extend our congratulations to our 2026 School Captains, Jethro Fenton and Bridie Forde with Vice Captains Ryan Toole and Ella Mitton who will lead the student body in the year ahead.

We are incredibly proud of all our representatives and look forward to the positive contributions they will make throughout 2026.



**Year 8 2026**



**Year 9 2026**



**Year 10 2026**



**Year 11 2026**



**School Captains**



**School Vice Captains**

**CHALLENGE, ENCOURAGE, ACHIEVE**

49 SOUTH STREET, GRENFELL NSW 2810 02 6343 1390 [www.henrylawso-h.schools@det.nsw.edu.au](mailto:www.henrylawso-h.schools@det.nsw.edu.au)

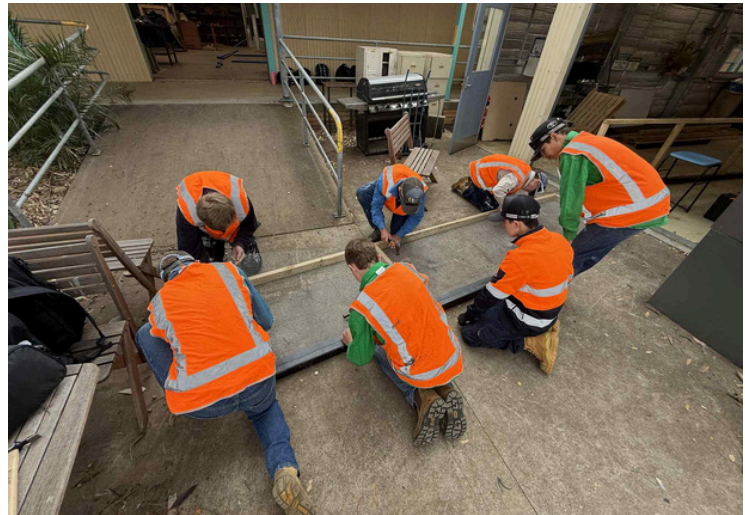
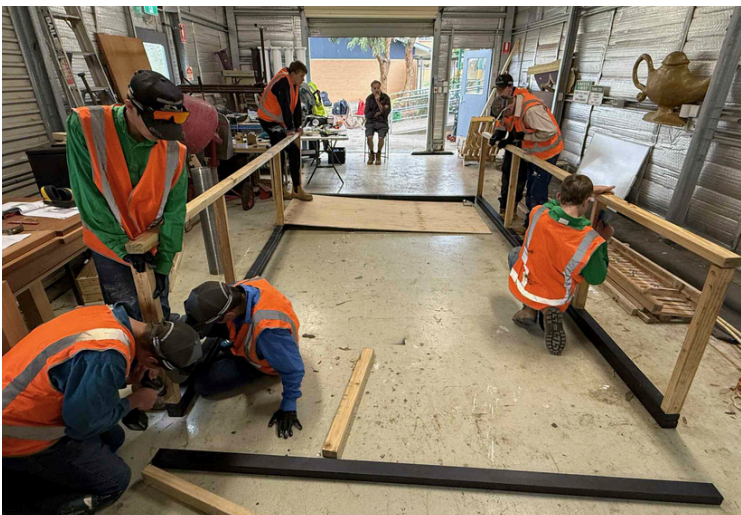
# THE HENRY LAWSON HIGH SCHOOL

## Try - A - Trade Construction

Last week, Oliver, Blair, Blaine, Lewis, Lachlan and Josh had the opportunity to participate in a practical construction project at our school. Under the guidance of Mr Andrews and Mr Russell Adams, the students successfully built a brand-new chicken coop, demonstrating excellent teamwork, initiative and problem-solving skills.

We extend our sincere thanks to Mr Russell Adams from Infrastructure Training for his support and expertise, providing our students with valuable hands-on industry experience.

Congratulations to all involved on an outstanding achievement — the finished product looks fantastic and will be a wonderful addition to our school community.



**CHALLENGE, ENCOURAGE, ACHIEVE**

49 SOUTH STREET, GRENFELL NSW 2810 02 6343 1390 [www.henrylawso-h.schools@det.nsw.edu.au](mailto:www.henrylawso-h.schools@det.nsw.edu.au)

# THE HENRY LAWSON HIGH SCHOOL

## Year 6 Transition

Wednesday 29 October, Year 6 students from local primary schools joined us at The Henry Lawson High School for a half-day transition program.

The students enjoyed a variety of engaging workshops, including agricultural judging activities and rock climbing challenges in Outdoor Recreation. It was a fantastic afternoon filled with smiles, teamwork, and hands-on learning, giving them a taste of life at high school.



**CHALLENGE, ENCOURAGE, ACHIEVE**

49 SOUTH STREET, GRENFELL NSW 2810 02 6343 1390 [www.henrylawso-h.schools@det.nsw.edu.au](mailto:www.henrylawso-h.schools@det.nsw.edu.au)

# THE HENRY LAWSON HIGH SCHOOL

## Vet Subject Focus

We are blessed to be able to offer three Vocational Education and Training subjects on site at The Henry Lawson High School, where our HSC students are able to gain their nationally accredited qualification in an industry trade for Construction, Primary Industries and Hospitality.

Our students can use their dual HSC and Certificate I and II to gain employment straight after leaving school, or use the qualification to get direct entry into Certificate III, apprenticeships and beyond. Being able to access trade training in our home town, by nationally accredited assessors, prevents our students having to travel to upskill.



**CHALLENGE, ENCOURAGE, ACHIEVE**

## Congratulations Riley

Riley Dennis had an incredible couple of days competing in Boccia at Homebush this week! He played exceptionally well, winning five games, drawing one, and only narrowly losing another. His outstanding effort helped his team place 5th out of 16 teams — a fantastic achievement!

Beyond his impressive performance on the court, Riley showed great sportsmanship and made plenty of new friends along the way. We are so proud of his dedication, skill, and positive attitude. Well done, Riley



## Congratulations Thomas

We are incredibly proud to announce that Thomas Vonthien has been selected for the NSW Under 15 Rugby Union team, set to compete in January next year.

This is a remarkable achievement, and Thomas is the only player chosen from the Country team — a testament to his dedication, talent, and hard work on the field.

Throughout the year, Thomas will be training in Bathurst as he prepares for the upcoming competition. We know he will represent his team and community with pride.

Well done, Thomas — we are all cheering you on!



## Congratulations Wyatt, Heidi and Ava

A big thank you to Wyatt Bruce, Heidi Morley and Ava Baker who travelled to Boorowa with St Joseph's Primary School to assist with refereeing on the day. Your enthusiasm, teamwork, and willingness to help are greatly appreciated!

We would also like to extend our thanks to St Joseph's for inviting our students along and giving them the opportunity to gain valuable experience as referees.

We hope everyone had a fantastic day!



## Principal Awards



# THE HENRY LAWSON HIGH SCHOOL

## Year 12 Hospitality

Our Year 12 Hospitality students recently mastered the art of fresh pasta making, finishing off their creations with a traditional carbonara using free-range egg yolks, freshly grated Parmesan, and a touch of pasta water. It was a marathon morning in the kitchen, but as always, our talented students rose to the challenge and delivered outstanding results!



## Halloween Mufti day

On Friday, 31 October, Stage Four held a fun and festive Halloween Mufti Day to raise funds for their upcoming excursion. Students and staff dressed up in a fantastic array of costumes, adding a spooky and exciting atmosphere to the day. The creativity and effort everyone put into their outfits truly made the event memorable – didn't the outfits look great!



## Melbourne Cup Mufti day

On Tuesday, 4 November, the entire school participated in the Year 9 Melbourne Cup Mufti Day and Cake Sale. Students and staff dressed up, with prizes awarded for the best dressed on the day. The event was a great success all money raised will go towards supporting Year 9 activities.



**CHALLENGE, ENCOURAGE, ACHIEVE**

49 SOUTH STREET, GRENFELL NSW 2810 02 6343 1390 [www.henrylawso-h.schools@det.nsw.edu.au](mailto:www.henrylawso-h.schools@det.nsw.edu.au)

## Outdoor Education

Outdoor Ed is exploring the formation of groups and group dynamics through initiative challenges.

Stages of group dynamics: Forming > Storming > Norming > Performing.

Students have now been presented to challenge to research and develop their own initiative activities in small groups to develop leadership, communication and problem-solving skills.



## Stage 5 Food Technology

Is there anything Stage 5 Food Technology can't do?

We are learning this week about low G.I foods suitable for diabetics and those wanting to eat clean.

Any excuse to make hand made, hand rolled Northern Chinese dumplings!

Affectionately called "Sui Gows" by Mrs Stuttle, these protein packed bundles of goodness can contain anything, from pork, prawn, ginger, chicken or beef. The more nutrients chopped into the mixture, the better.

Ancient recipe, now passed down to your kids!

Super nutritious, full of garlic chive antioxidants, lean protein and either boiled or finished with the "potsticker" method.

Tomorrow, we will analyse this recipe against the FSANZ nutrition calculator and how it stacks up for a diabetic over the course of a day to keep blood sugar levels stable for longer.



**CHALLENGE, ENCOURAGE, ACHIEVE**

Reminders

# RAISE YOUR VOICE

## THLHS Public Speaking Competition

*Open to all students in Years 7-12.*

*Two categories:*

- *Junior: Age 14 and under*
- *Senior: Age 15 and over*

*Junior section:*

- *Prepared speech on any topic (5 minutes)*
- *Impromptu speech (2 minutes)*

*Senior section:*

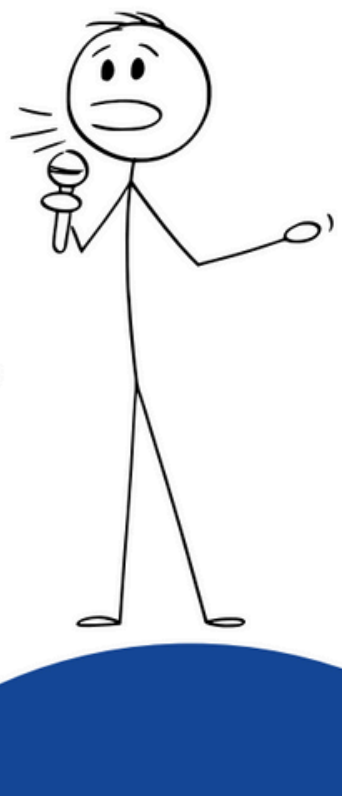
- *Prepared speech on any topic (8 minutes):*
- *Impromptu speech (3 minutes)*

*Support available to prepare your speech - see Mrs Osmand in the library.*

**9 DECEMBER 2025**

**LUNCH PROVIDED FOR ALL PARTICIPANTS**

*The winners of the junior and senior sections will be invited to represent THLHS at the regional level.*



### English/History Assessment Reminders

All Year 11 English classes: Texts and Human Experiences common assessment task due 8th Dec (week 9)

Year 11 Ancient History: Core study source analysis task due 28th Nov (week 7)

Year 11 Modern History: Core study source analysis task due 21st Nov (week 6)

Stage 5 English: informative and persuasive feature article due 6th Nov (week 4)

Stage 5 History: 1960s research presentation due 7th Nov (week 4)

Stage 4 English: dramatic monologue due 14th Nov (week 5)



## Reminders



# THE HENRY LAWSON HIGH SCHOOL

49 SOUTH STREET PO BOX 124  
GRENFELL NSW 2810

Phone: (02) 6343 1390

Fax: (02) 6343 2377

Email: [henrylawso-h.school@det.nsw.edu.au](mailto:henrylawso-h.school@det.nsw.edu.au)

3 November 2025

Dear Parents/Carers

All public schools in New South Wales have the opportunity to take part in an exciting initiative run by the Department of Education. We are excited to share that all students in years 5 to 12 will soon be able to use NSWeduChat, a cutting-edge generative Artificial Intelligence chat tool operated by the department. Unlike ChatGPT and other tools, NSWeduChat has been designed to respond to students with guidance and by asking open-ended questions. NSWeduChat can answer questions and provide information, acting as a useful learning aid for your child. While NSWeduChat is sophisticated, it does not replace human teachers or tutors. Instead, it offers additional support, helping to reinforce understanding and encourage students to explore and share their thoughts and reasoning.

NSWeduChat may also be incorporated into lessons by your child's teachers, helping them learn how to use NSWeduChat in various subjects, about the potential implications of generative AI, and highlighting its capacity to create content that may require thoughtful and responsible use.

NSWeduChat is a powerful tool, but it can provide incorrect or incomplete responses.

### What personal information will be collected?

The NSWeduChat AI tool collects data that includes the record of all interactions your child has with the tool, encompassing every question asked and the corresponding responses provided. Additionally, some basic user identifiers, such as your child's name or a unique user identifier assigned by the system, are also collected to enhance the personalisation of the learning experience. These measures help ensure that your child has a seamless, supportive and unique learning journey with NSWeduChat.

In-app surveys may appear which are optional for students to complete. The purpose of these surveys is to inform potential future activities such as monitoring, research, and evaluation.

### How will the department use the information?

The information collected during the use of this tool will be used for the following purposes:

- **For your child** – The conversation data collected may be used by NSWeduChat to create personalised experiences for your child, by incorporating characteristics of the conversation in future conversations.
- **In the school** – Your child's teacher may be able to review conversations between NSWeduChat and your child for safety, quality and training purposes. The tool's content filter may trigger disclosures related to self-harm concerns to the school to ensure your child's safety. These staff will know the identity of your child.
- **Within the department** – Both combined and de-identified data will be used by teams to improve the delivery of public education. Where analysis requires looking at individual questions and

responses, those interactions will be de-identified so that anyone seeing the question or response will not know which student was involved. Where appropriate, information will be grouped together so that the staff can see overall patterns in the information, not individual student information. These staff will **not** know the identity of your child.

Within the department, staff members responsible for managing the process of de-identifying and combining the data will be the only additional persons who will know the identity of your child.

These staff may combine the NSWeduChat data with other data held by the department prior to the de-identifying and combining of the data where it may assist with improving public education.

### **Will the information be disclosed to anyone outside the department?**

The information will not be disclosed to anyone outside the department unless it is consistent with the privacy legislation or as permitted or required by any other law.

One possible exception will occur in very rare circumstances whereby the department is required to submit a mandatory report to the Department of Communities & Justice. This will occur if the tool's content filter triggers disclosures related to self-harm concerns, the school is contacted, and it is deemed that there is a significant risk to your child's safety or wellbeing.

Staff responsible for supporting your child may have access to information and know your child's identity.

### **Is participation voluntary?**

Yes. Although your child will be provided access to NSWeduChat, it is entirely optional for them to use it. They may choose not to use it at all, or only when they wish to.

At the point of enrolment, the department provides information about the use of online services and obtained parental consent for their use. NSWeduChat is included as part of that agreement.

### **Where is the information held and how can it be accessed?**

NSWeduChat will be delivered electronically to your child's Department of Education student portal.

When your child uses NSWeduChat the 'chat' conversation is encrypted and transmitted over the internet to a department server with a token that identifies your child.

Only when the answer arrives at the department server can it be re-combined with your child's identity.

All information collected by NSWeduChat is stored in Australia using department-owned services.

The department endeavours to ensure that the personal and health information it collects and holds is accurate, complete and up to date by encouraging families to regularly update the information if there are changes and by allowing access to and alteration of the information.

Requests to access and update personal and health information should be made directly to the school. The department's [privacy management plan](#) has information about how requests are handled.

If you wish to discuss any aspect of this tool, please contact the school on 6343 1390

Yours sincerely



Aaron Flagg  
PRINCIPAL