



HOMENOTE

Respect. Responsibility. Ready To Learn.

T: 02 4341 3655 F: 4343 1517

W: <https://ettalong-p.schools.nsw.gov.au/>

E: ettalong-p.school@det.nsw.edu.au

Term 3 Week 9

7 September 2021

DATES FOR YOUR DIARY

Available daily	Learning from Home packs available for collection
Wednesday 8 Sept	Wellbeing Wednesday – Zoom sessions for students

Dear Parents and Carers

This week is SASS Recognition Week! We acknowledge our hardworking SASS staff and are grateful for all their efforts in helping to make our school the amazing place that it is! Our team answer phones, attend to Sick Bay, assist in our classrooms, mow our lawns, embed Aboriginal culture in our school and sooooo much more!

Today our Homenote features artwork from our Stage 2 classrooms. The artwork continues to brighten our rooms even without our fantastic students. We have also included the answers to the EPS Trivia Questions from last week. We have included another set on the next page, with answers in next week's Homenote.

Recently, we received a very special note and the most amazing medallion for one of our Y2 students who won the ANZAC colouring in competition which was held by Koori Kids in association with the Department of Veteran Affairs and local registered clubs. Drumroll please....

Congratulations to Frankie from 2C



Just a reminder about the "Roadmap to Return to School" that was announced on Friday August 27. Schools that remain in Level 4 or Level 4 plus restrictions, will see students return in a staggered way from October 25. If schools are no longer in Level 4 restrictions, students will be able to return to school earlier than this date. The levels are decided upon by NSW Health and relate to the number of residents in an LGA with COVID. Currently, the Central Coast is part of Regional NSW and will remain under Level 4 restrictions until midnight September 10, which is the end of this week.

Class teachers will be continuing to contact you throughout this week. If you miss their call, please remember to phone the school and leave a message. If your child is experiencing any difficulties, please ask your child's teacher for any assistance. As always, our staff are eager to help.

Tomorrow, we will again host our Zoom sessions for students. It is pet week, so students are allowed to bring their pet along to their zoom. Alternatively, they can have a photo or draw a picture of their pet or their 'dream' pet. Please use the same password and login details from last week to access the zooms. 'Wellbeing Wednesday' will occur starting at 9am for our Kindergarten students. Please see the timetable below. Please note that those students attending school won't be able to participate at this time.

- Kindergarten- 9am - 9:25am
- Year 1- 9:30am - 9:55am
- Year 2- 10:00am - 10:25am
- Year 3- 10:30am - 10:55am
- All support classes- 11am - 11:25am
- Year 4- 11:30am - 11:55am
- Year 5- 12pm - 12:25pm
- Year 6- 12:30pm - 12:55pm



We are now accepting enrolments for Kindergarten 2022! Please drop enrolment forms into school or apply online. We can't wait to welcome your child into our school!

Please stay safe and well!

Jodie Campbell - Relieving Principal

REPEAT: On Sunday July 18, 2021, all NSW Schools received stronger advice from the Department of Education. The advice now states; "Parents must keep children - of all ages, across primary and secondary schooling and early childcare - home if they can. Students will be supported to learn from home. Schools and early childhood education and care services, including Out of School Hours Care services are open for any child that needs it. Thank you for your support"

Learning from Home packs continue to be available from our office throughout the day. The work packs are also made available via our school's website ettalong-p.schools.nsw.gov.au, click on Learning at our School, then click Learning from Home. All students, whether attending school or not, will complete the same schoolwork. Updated information for families continues to be available at <https://education.nsw.gov.au/covid-19/advice-for-families>

Schools in the Central Coast area continue to be in Level 4 and will remain on this level until **September 10, 2021**. Which means the following restrictions apply for us; *Schools activate plans to support continuity for students learning from home. No student is turned away *Reduce mingling of student cohorts wherever possible *No non-essential visitors *QR codes in place *Mandatory masks indoors for all staff and secondary students.

Please be reminded when dropping off your child or children that staff will be on gate duty to support their entry. The following gates will be open in the morning and afternoons until further notice; the main gate on Karingi Street; the gate adjacent to the Disabled Parking Bay in Karingi Street with use for students from our Support Unit only please and the main gate adjacent to the Kiss and Drop on Uligandi Street. The gate off the basketball court will only be available in the afternoons.

Trivia Questions and answers from last week....

- 1) It is week 8 now, how many more weeks of school until the December holidays? **13**
- 2) What are our school colours? **Blue and yellow**
- 3) Who is our longest serving school staff member? **Mrs Denning**
- 4) What is our school phone number? (There is more than one number) **4341 3655 OR 4341 3550**
- 5) If you are in Kindergarten next year, when will you finish at EPS? **2028**
- 6) What colour is Blaxland house? **Red**
- 7) What class does Mrs Jager teach this year? **5J**
- 8) What instrument does Mr Boutland play at school? **Recorder**
- 9) What season do the plovers breed on the K-2 oval? **Winter**
- 10) How many rows of seats are there in the Kindergarten eating area? **12** |

Trivia Questions

(answers will be in next week's Homenote)

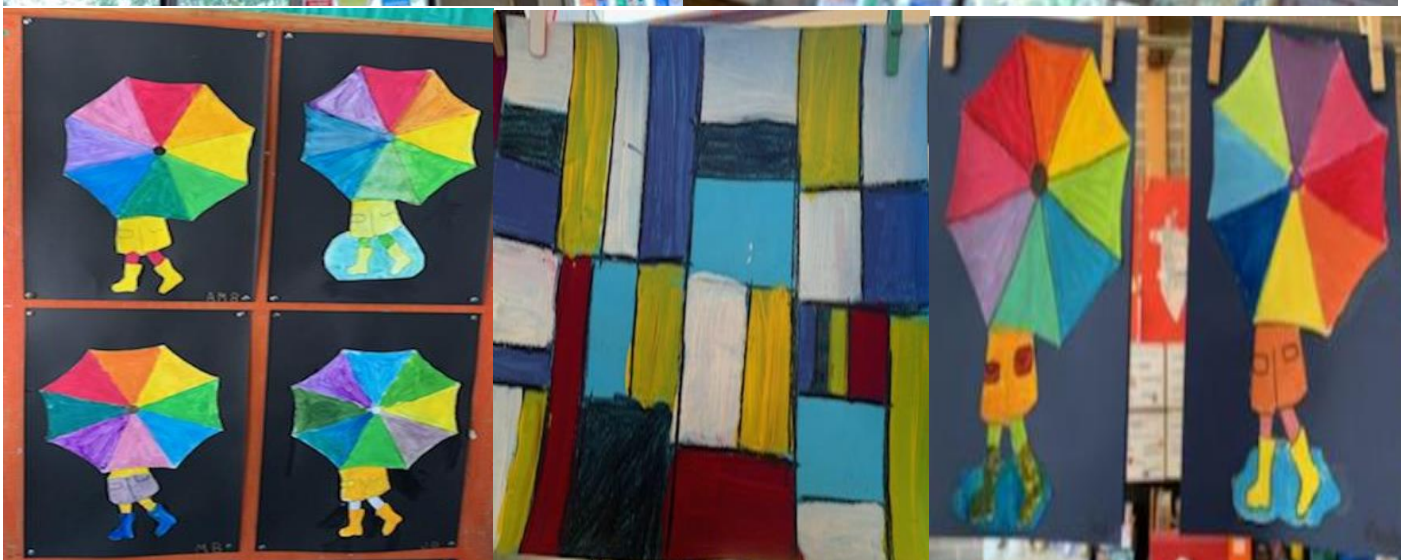
- 1) How many classes are there at EPS this year?
- 2) What are our fabulous cleaners' names?
- 3) Who is Mrs Lynch?
- 4) When was EPS first opened?
- 5) What is our school email address?
- 6) Lion Island houses colonies of which animal?
- 7) What does Woy Woy mean in our local Aboriginal language?
- 8) When did Woy Woy get its own railway station?
- 9) What colour is the sports house Sturt?
- 10) What musicians from our school, get to play at the Opera House?

We make time to ask
RUOK?

Thursday September 9, 2021

Our rooms are FILLED with beautiful
work from
Term 2!!

Here are some photos from 3R, 3S,
3/4A, 4B and 4S!





We make time to ask
RUOK?

Thursday September 9 is 'R U OK Day?' Take the time to ask...everyone needs
some to talk to....

Beyond Blue 1300 224 636

Kids Helpline 1800 55 1800

Men's Line 1300 78 99 78