

## WORDS on WEDNESDAY

### From the Principal's Desk

#### Harmony Day & National Ride2School Day

Last Friday we enjoyed two fantastic events on the one day—**Harmony Day** and **National Ride2School Day**. Our school was a sea of orange, with students and staff proudly celebrating the cultural diversity that makes our country so special, as we joined in Harmony Day activities throughout the day.

A wide array of transport modes rolled through the gates, from bikes and scooters to skateboards and rollerskates, making National Ride2School Day a great success. A huge thank you to one of our School Captains Syd Redman, and mum Meghan Sharkey for championing the event, as well as the dedicated team of volunteers who offered bike tune-ups and a tyre pumping station to help everyone arrive safely and smoothly. Thank you to QE Food Stores for the fresh apples everyone was greeted with upon arrival.

#### NAPLAN

Our students have now completed NAPLAN, and we couldn't be more proud of their efforts. A sincere thank you to our amazing teachers for their thoughtful preparation and smooth facilitation throughout the testing period. Parents will receive an individual student report later in the year highlighting student achievement against 4 levels of proficiency: Exceeding, Strong, Developing and Needs additional support. We look forward to analysing the data once it becomes available, to inform future planning here at Clovelly Public School.

#### Readathon and Premier's Reading Challenge

This week marks the launch of our Readathon and the Premier's Reading Challenge. These initiatives are wonderful opportunities to ignite a love of reading and build literacy skills. We encourage all students to dive into a good book and challenge themselves to read widely over the coming weeks.

#### Transition to Stage 3 – Why Choose Clovelly?

We warmly invite all families of students from Kindergarten to Year 6 to attend our Transition to Stage 3: Why Choose Clovelly? Wednesday, 2nd April 2025, from 6:00 – 7:00pm in the school hall. This is a fantastic opportunity to explore the rich learning experiences, quality programs, and uniquely engaging extra-curricular opportunities that make Years 5 & 6 at Clovelly such a standout choice.





The evening will feature performances by our esteemed Senior Band, as well as opportunities to hear from staff, students, and parents about the enriching Stage 3 experience. Whether your child is already in Stage 3 or will be moving into year 5 & 6 in the coming years, this is an event not to be missed! Come along and make an informed choice about your child's education and wellbeing.

### Moving on to High Schools after Year 6 at Clovelly PS

I thought it would be timely to show data first published in Words on Wednesday (14th Aug 2024) indicating where our students attend High School after Year 6 at Clovelly. The first graph shows the previous 10 year period, and the second graph shows the previous 2 year period. Both depict the array of schools in our area that accept enrolments from Year 7. Note, we excluded schools where only 1 or 2 children attended as there were a number of schools that fell in this category that are quite a distance away. Our most recent data indicates 38% of Year 6 students will attend a NSW Public High School in Year 7 2026 .

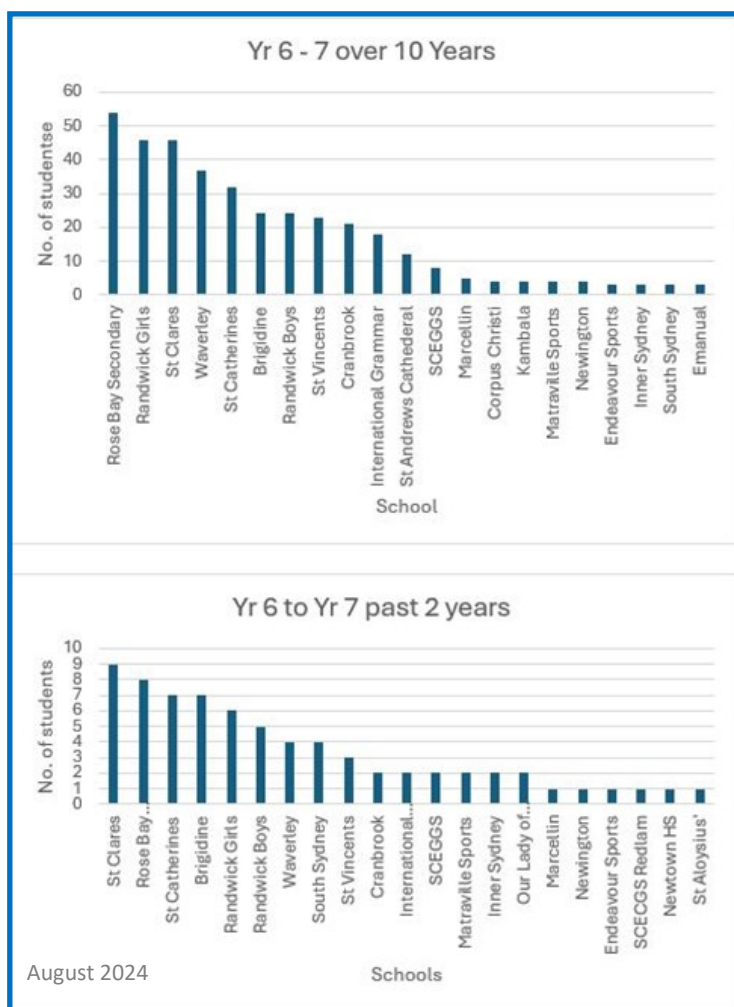
### NSW Public School Surveys

In Term 2, we are offering our students the opportunity to participate in the NSW Public Schools Student Survey. The survey gives students the chance to share their thoughts and feelings about life at school, including questions about their engagement, learning experiences and wellbeing at school.

Hearing directly from our students will help us understand what's working well and where improvements can be made to our school. The survey is confidential, takes around 10 to 15 minutes to complete, and will be conducted online during school hours.

Participation is voluntary. If you prefer your child not to participate, please complete the opt-out consent form, via the SENTRAL Parent Portal. Further information about the survey is available at <https://education.nsw.gov.au/npss>

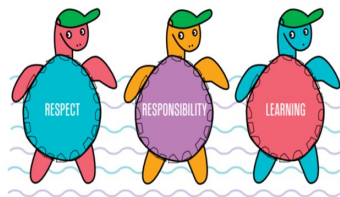
Rhianna Grentell  
Acting Principal





## Principal's Awards

1B	Lexie C	4M	Niklas K
1B	Cillian D	4A	Freya K
1J	Lenny E-K	5/6M	Holly F
1J	Finn H-W	5/6M	Josephine B
1J	Matilda H-L	5/6M	Ashleigh E
2S	Sophia W	5/6B	Will M
2S	George G	5/6B	Oscar S
3S	Annika A	5/6B	Theo M
3S	Isabella A	5/6B	Sunday P
3S	Louis B		
3M	Otis N		
4M	Chloe S		



## Stewart House Mufti Day

Thursday 3rd April, 2025 (Week 10)  
Bring a gold coin donation and wear red!



Join the SRC in raising funds to support the students of Stewart House school and provide them with resources they need to thrive.

Together we can make a difference!



## Transition to Stage 3 Why Choose Clovelly?

Hall @ 6pm Wednesday 2nd April

Families of students in K-6 are invited to attend this showcase of all that's on offer.



## Deputy's Desktop

### NAPLAN Update

We want to extend a huge thank you to our community for your positive approach to NAPLAN over the past week. We understand that there can be a lot of pressure surrounding this assessment. While NAPLAN is an important tool, it is just one part of how we assess and report on student learning at our school.

We also want to give a big shout-out to our amazing staff! With NAPLAN now taking place earlier in the year and being conducted online, there were some challenges to navigate behind the scenes. Thanks to everyone's hard work, we managed to get through it smoothly. Thank you all for your support!

NAPLAN results will be available for parents later this year, with schools sending home individual student reports.

### Attendance Matters!

Attending school regularly is very important for our students. It not only helps them do better in their studies but also enhances their overall learning experience. When students come to school every day, they build friendships and connections with their classmates and teachers, creating a friendly and supportive school environment. Being part of school activities also helps prepare students for future responsibilities in their lives.

To ensure the school has correct and up to date information regarding your child's attendance, please make sure you update their absence reasons on the Sentral App under the Absences button.

Together, schools and parents play a key role in encouraging regular attendance. Below, you'll find helpful fact sheets about attendance and absences for parents. Thank you for your support!

Clare Hanoumis  
Deputy Principal (Rel)

NSW Department of Education

# Days missed = years lost

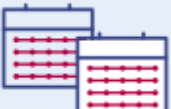
A day here and there doesn't seem like much, but...

When your child misses just...

they miss weeks per year

and years over their school life

**1** day per **fortnight** = **4** weeks  = Over **1** year missed

**1** day per **week** = **8** weeks  = Over **2.5** years missed

## Cross Country

Cross Country tomorrow; reminder students are to apply sunscreen prior to arrival at school, wear their house colours and hat, bring/wear suitable shoes (no spikes allowed), drink bottle and a snack to eat after the race in a small day pack.

The timing below is an **estimate only**:

Race Schedule		
10:00	Start Boys 8/9 race	2 laps
10:20	Start Girls 8/9 race	2 laps
10:40	Start Boys 10 race	2 laps
11:00	Start Girls 10 race	2 laps
11:20	Start Boys 11 race	3 laps
11:40	Start Girls 11 race	3 laps
12:00	Start Boys 12/13s race	3 laps
12:20	Start Girls 12/13s race	3 laps
12:40	Start getting into class groups during the last race so students are ready to walk back to school. Mark class rolls again.	
1:00	After last race (or when it has nearly finished) students start walking back to school in class groups	
1:30	Arrive back at school	

Year 2 & 3 students walk back to school with teacher after their race





A colorful illustration for an Easter Hat Parade poster. At the top, a string of colorful triangular bunting flags (purple, yellow, pink, green, orange, blue) hangs across the frame. The background is a light cream color. On the right side, there are stylized flowers in shades of purple, orange, and pink, with green leaves and a small blue butterfly. In the center-right, a large, cheerful white rabbit with pink inner ears and rosy cheeks is peeking out from behind a large, multi-colored Easter egg. The egg has a rainbow-like pattern of orange, yellow, and red. In the foreground, several other Easter eggs are visible: one with a yellow and white zigzag pattern, one with a green and white polka-dot pattern, and one with a yellow and pink striped pattern. The bottom of the poster features a wavy orange pattern. The text is arranged on the left side in a clean, sans-serif font.

# EASTER HAT PARADE

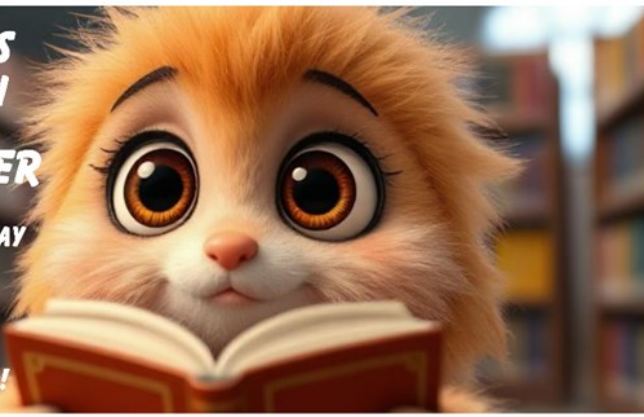
**FRIDAY, 11 APRIL  
9:30 AM**

Clovelly Public  
School

# CLOVELLY PS READATHON FUNDRAISER

24 MARCH - 16 MAY

COLLECT YOUR  
SPONSORS NOW  
& START READING!



Name: \_\_\_\_\_

Class: \_\_\_\_\_



Funds raised will assist the library to purchase new literature & resources. Extra Readathon sheets can be collected from the library.

All books count (even Premier's Reading Challenge); read by yourself, with friends, bedtime stories, even those read in class.

This sponsorship form is to be handed in at the conclusion of the Readathon. The class that has read the most books will enjoy a 'G' Rated MOVIE & PIZZA PARTY!



Payment via SCHOOL BYTES, 'add item' select Readathon.

## 2025 NSW Premier's Reading Challenge

Dear Parents & Carers

The NSW Premier's Reading Challenge is now open and Clovelly Public School is excited to be participating!

### What is the NSW Premier's Reading Challenge?

The PRC is a statewide Challenge that encourages students to develop a love of reading for leisure and pleasure in students and enables them to experience quality literature. It is not a competition, but a challenge to encourage each student to read, to read more, and to read more widely.

All students who complete the challenge and have their reading record validated by the school's PRC coordinator will receive a certificate signed by the Premier of NSW.

### How many books do students need to read?

Students in Kindergarten to Year 2 are challenged to read or experience 30 books. 20 of these books must be from the relevant Challenge booklists, and up to 10 books can be personal choice books. Books can be read with a parent, carer, teacher or another student.

Students in Year 3 to Year 10 are challenged to read 20 books independently. At least 10 of these books must be from the relevant Challenge booklists, and up to 10 books can be personal choice books.

If a book is from an approved PRC series, students can enter up to 5 books as Challenge books, and can read up to 10 other books from the same series as Personal Choice books. More information on the rules of the Challenge can be found [on the PRC website](#).

Books must be added to a student's online reading record by Friday 22 August 2025 in order for their reading record to be validated and receive a certificate.

### How do students log their reading?

Students can access the PRC's [Student Experience site](#) using their DoE username and password, or can log into the site via the Student Portal. A video guide explaining how to use the Student Experience site can be found [here](#).

### How can students find books on the NSW PRC challenge lists?

Most books at Clovelly PS are on the PRC lists. Some have PRC stickers on them. Just ask Mrs Levi or Mrs van Dam for ideas of PRC books or series your child could try.

Both Randwick and Waverley Children's libraries have lots of PRC books with PRC stickers on to easily identify them.

Any questions, just contact us in the Library, or send an email to us via [clovelly-p.school@det.nsw.edu.au](mailto:clovelly-p.school@det.nsw.edu.au) marked "Attention Library"



### Navigating Friendships in Primary School



As children embark on their journey through primary school, they encounter a myriad of new experiences, one of the most significant being the formation and navigation of friendships. Friendships play a crucial role in a child's social and emotional development, influencing their happiness, self-esteem, and sense of belonging. However, as parents, guiding our children through the ups and downs of friendships can sometimes be challenging. I'll explore some strategies in this article to help your child navigate friendships in primary school.

#### Encourage Social Skills Development

Building friendships requires social skills such as communication, empathy, and cooperation. Encourage your child to practice these skills through role-playing scenarios, group activities, and cooperative games. Teach them how to listen actively, share, take turns, and resolve conflicts peacefully. By developing these essential social skills, your child will be better equipped to build and maintain positive friendships.

#### Promote Inclusivity

Teach your child the value of inclusivity and kindness towards others. Encourage them to reach out to classmates who may be feeling left out or lonely. Help them understand the importance of accepting differences and embracing diversity. By fostering a culture of inclusivity, your child can contribute to creating a positive and welcoming environment where everyone feels valued and accepted.



#### Teach Resilience

Friendship dynamics can be unpredictable, and not every interaction will result in a lifelong bond. Teach your child that it's normal for friendships to change and evolve over time. Encourage resilience by helping them understand that disagreements and conflicts are a natural part of relationships. Teach them healthy coping mechanisms for dealing with rejection or disappointment, such as talking to a trusted adult or engaging in activities that bring them joy.

#### Model Healthy Relationships

Children often learn by example, so it's essential to model healthy relationship behaviours in your own interactions. Demonstrate kindness, respect, and empathy in your dealings with others, including your own friends and family members. Show your child how to communicate effectively, resolve conflicts calmly, and apologise when necessary. By observing positive relationship dynamics at home, your child will learn valuable lessons that they can apply to their own friendships.



#### Stay Involved

Stay involved in your child's social life by asking open-ended questions about their day and their interactions with classmates. Pay attention to any signs of friendship struggles or conflicts and offer support and guidance when needed. Foster open communication by creating a safe space for your child to express their thoughts and feelings without fear of judgement. By staying involved and attentive, you can help your child navigate the complexities of friendships with confidence and resilience.

*Navigating friendships in primary school is an essential aspect of a child's social and emotional development. By encouraging social skills development, promoting inclusivity, teaching resilience, modelling healthy relationships, and staying involved, parents can empower their children to build and maintain positive friendships that will enrich their lives for years to come. Remember that every child is unique, and it's essential to tailor your guidance to meet their individual needs and experiences. With patience, understanding, and support, you can help your child navigate the ups and downs of friendships with confidence and grace.*

Rachel Berezovsky  
School Counsellor & Registered Psychologist





# MURPHY SPORTS

## HOLIDAY SPORTS CLUB

@ Waverley College **From** Just \$50/day  
**April: 14 - 17 | 22 - 24 | 28 - 29**

These Holidays we play many of our regular Hybrid Games but with some extra focus on mainstream Sports including Football, Netball, AFL, Tag Footy, Basketball, T-Ball, Tennis & Cricket

- Hybrid & Mainstream Sports
- Team Challenges prizes and more....



Visit: [MURPHYSports.COM.AU/BOOK-NOW](http://MURPHYSports.COM.AU/BOOK-NOW)

# Holiday camps on sale now!



## MINECRAFT • ROBLOX

### Tech • Art & Craft • Sport

14 - 16 April  
 9:00 AM - 3:45 PM

Clovelly Public School

[www.codecamp.com.au/clovelly](http://www.codecamp.com.au/clovelly)

**SAVE \$25** Use coupon code **SCHOOL25** at checkout

Supported by **W GROUP**



# Pretty Little Ballerinas

## Ballet and jazz classes

### for children 2 - 12 years

**Studio locations:**

- Bondi Beach
- Bondi Junction
- Coogee
- Erskineville
- Newcastle
- Rushcutters Bay
- Surry Hills



**Classes held Monday - Saturday**

New students welcome at any time!



[www.prettylittleballerinas.com.au](http://www.prettylittleballerinas.com.au)  
 Ph (02) 8036 1709




# Kool HQ

Autumn 2025

## Holiday Program

Experience themed days filled with sports, cooking, drama, STEM, dancing, art, excursions, and incursions. Explore, learn, and have unforgettable fun!

**OPEN TO ALL 5-13 Years Old**

**LOCATIONS:**  
 Reddam House - 70 Edgecliff Rd, Woollahra NSW 2025  
 Waverley College - 131 Birrell St, Waverley NSW 2024

**DATES**  
 7 - 28 April 2025

**HOURS**  
 8:30 am to 5:00 pm, extended care option until 6:00 pm.

**FEES**  
 From \$14.21 with maximum subsidy  
 Check our [Child Care Subsidy Fee Estimator](#)



Scan QR Code to book

**Registration Link**  
[koolhq.com.au](http://koolhq.com.au)





# COME & TRY CLINIC



The clinic is all about giving rugby league a go and having as much fun as possible!

Whether you've played before or not, all of our games and activities focus on fundamentals, mixed with a heap of fun!

**4:40PM - 5:25PM**  
**ARRIVAL - 4:30PM**  
**PICK UP - 5:30PM**  
**UPPER KIPPAX,**  
**MOORE PARK**  
**AGE: 5-6**  
**28TH MARCH**

**REGISTER NOW**



## KIDS GO FREE



### ROOSTERS V TITANS

FRI 28 MAR  
 ALLIANZ STADIUM  
 6PM KICK-OFF

Grab your 2025 team poster when you arrive

**Chicken Shop Family Deal**  
 2 x Chicken Schnitzel Burger  
 2 x Popcorn Chicken  
 2 x Small Chips  
 4 x Bottles of Water

**\$70**





**TICKETEK**  
 ON SALE NOW