

Alma Public School

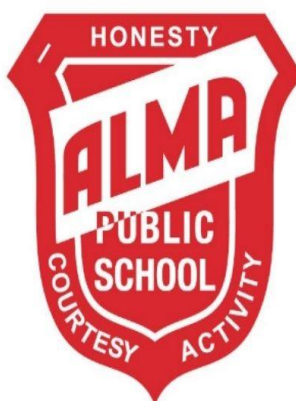
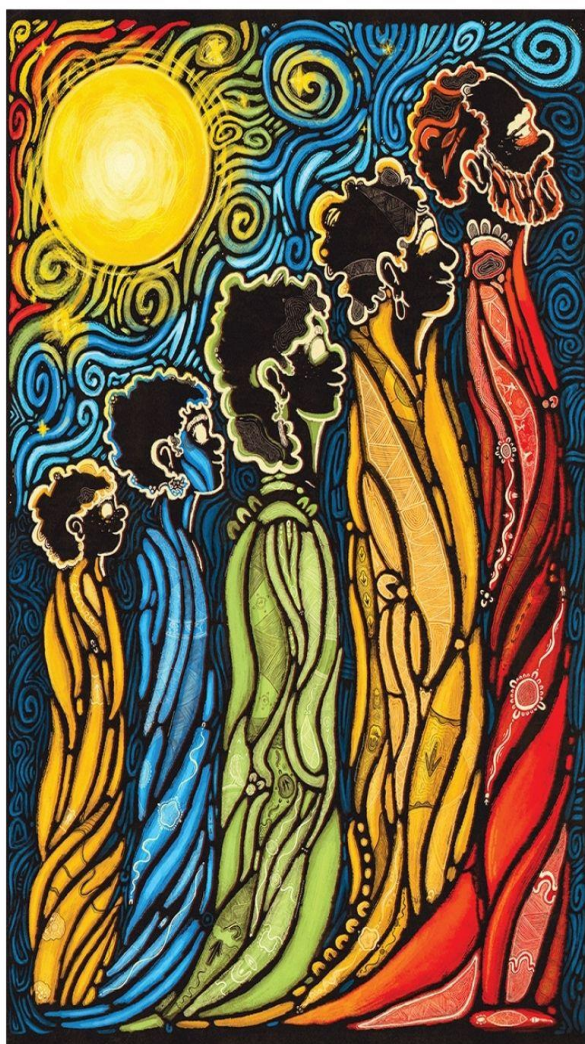
Telephone: (08) 8088 2181

Email: alma-p.school@det.nsw.edu.au

Newsletter

Term 3 Week 2 Monday 28 July 2025

Visit our website: www.alma-p.schools.nsw.gov.au or download the Sentral for Parent Portal through the Apple App Store or Android Google Play Market



NAIDOC DAY

Monday 4th August

Students are encouraged to wear clothing with indigenous print or red, black and yellow

Rotation Activities – 9:00 to 2:00 pm
Free Sausage Sizzle, Damper, Tea & Coffee
– 11:00 to 11:30 am

INSIDE THIS ISSUE: From the Relieving Principal, Kindergarten Enrolments 2026, Alma Family Playgroup, Whats on this week at Alma PS? Permission Notes Due, Attendance Matters, Stage 3 Excursion Information, Choral Festival Information, 100 days of Kindergarten Information, Term 3 Calendar, Week 10 Term 2 Assembly Super Stars, NCCD Letter.

From the Relieving Principal

NAIDOC

Our NAIDOC Celebrations will be held on Monday 4 August. Please come along for a great day of activities. Thank you to our wonderful staff for all their amazing organisation for this event.

P and C Meeting

We will have a P and Meeting today at 5.30pm in the staffroom. Please come along if you can volunteer your time. Many hands make light work!

School Nurse

We would like to welcome Emma Kemp, our new school nurse to Alma. Emma will be working Monday, Tuesday and Wednesday and can be found in our Health Hub. Please contact the office if you would like to get in touch with Emma.

Phones and Smartwatches

We have seen an increase of phones and smart watches coming to school with students. Please remind your child to keep these devices at home or if they do bring them to school that they must be handed in at our office before 8.55 to be locked away.

Public Education Week

During Public Education Week 2025, let's celebrate igniting the potential of every student in every aspect of their education, including high potential and gifted learners.

This week is an opportunity to acknowledge our exceptional staff, celebrate the achievements of our students and recognise why we proudly choose public education, where every child reaches their full potential. There will be opportunities for all public schools to participate in a variety of performing arts and sporting activities and showcase the talent that we have in the Far West!

Choral Festival

Broken Hill Public School are thrilled to be hosting this year's **Choral Festival** at the **Broken Hill Musicians Club Wednesday 6 August** — a celebration of student talent, collaboration, and the joy of music!

Please note that **no tickets** are required for this event. The venue has a capacity of 230, and while we are excited to welcome families and community members, seating may be limited for some sessions due to space restrictions.

We kindly ask all attendees to arrive with ample time prior to your school's scheduled performance to allow for sign-in at the Musicians Club and to be seated before the session begins.

To support our local schools and students in need, we are also seeking donations for Stewart House. Any contribution to this important cause would be greatly appreciated.

We look forward to a fantastic day of song and community spirit!

Book Week

Just a reminder that our Book Week Parade will be held on Friday 22nd August at 12.00. I can't wait to see the costumes!!



Ngayi Alma, we start our week of learning by acknowledging the Wilyakali people. The Wilyakali people are the traditional owners of the land we are on today. On behalf of Alma Public School, we remember Wilyakali people from the past, present and emerging. Their country, our country and our School. We hope you have a great week of learning.

Kindergarten Enrolments for 2026 Now Open!

Is your child ready for an exciting year of learning and discovery? Enrolments for Kindergarten 2026 are officially open, and we can't wait to welcome new faces to our school community!

How to Enrol:

- Visit alma-p.school@det.nsw.edu.au
- Or stop by the office to chat with our friendly staff!



Join Our Alma Family Playgroup!

Are you excited about your child starting kindergarten in 2026? Join our Alma Playgroup

Connect with Other Families: Meet and have a chat with other parents and children who will be starting school together.

Who Can Attend: Families with children entering kindergarten in 2026.

Activities include:

- Storytime and singing
- Arts and crafts
- Outdoor play

When: Tuesday, 29th July, August 5th, August 12th, August 19th, September 2nd & September 16th
 Time: 9:30 AM - 10:30 AM
 Where: Alma Public School - Kinder Hall

We can't wait to see you there!

Come Play, Learn, and Grow Together!

Contact Us:
 For more information, contact:
 Alma Public School Office
 ☎ 08 8086 2181
 ✉ alma-p.school@det.nsw.edu.au

Permission Notes Due

**Choral Festival – Tuesday
30.07.25**

**Broken Hill Athletics Carnival -
Wednesday 6.08.25**

BROKEN HILL PUBLIC SCHOOLS

ENROLLING NOW FOR KINDERGARTEN 2026

All public schools in Broken Hill are now accepting enrolments for Kindergarten 2026.

Visit your zoned public school to pick up an enrolment pack, or enrol your child online at: <https://ehub.enrol.education.nsw.gov.au>

We are committed to ensuring that every student learns, grows and belongs in an outstanding education system.



Alma Public School
 Broken Hill Public School
 Broken Hill North Public School
 Burke Ward Public School
 Morgan Street Public School
 Railway Town Public School



T3 W2 What's on this week at Alma PS?

Monday- P and C Meeting in staffroom 5.30pm

Tuesday- Playgroup- Meet at Kinder hall 9.30am

Wednesday- Choral Festival Rehearsal

Thursday-

Friday- 3/4M Assembly

Coming up...

Week 3 Choral Festival
 NAIDOC
 100 days of Kinder
 Broken Hill Athletics Carnival
Week 4 Year 1 Phonics Check
 Playgroup
 No way to Bullying Day



PBL

We are in the right place
at the right time.

Minutes lost = days lost per year

A couple of minutes here and there doesn't seem like much, but...

When your child misses just...

they miss days per year

5 mins
per day



=

3 days

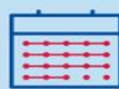


30 mins
per day



=

18 days



education.nsw.gov.au



Patterns of lateness
can have a serious
impact on your child's
education.

Stage 3 Bendigo and Ballarat Excursion

1 September- 5 September

Full amount \$430.00

| | | |
|-----------------|------------------|-------------------|
| 25 July \$50 | 8 August \$50 | 22 August \$50 |
|-----------------|------------------|-------------------|



**Stage 3 Parents are
invited to an
information session for
our upcoming excursion
to Ballarat and Bendigo**

**Thursday, 21st August
at 3.30pm in the
Computer Lab**



**Term 2
Calendar 2025**

| Week | Monday | Tuesday | Wednesday | Thursday | Friday |
|------|---|---|--|---|--|
| 2 | 28 July <u>P&C Meeting</u> <u>5.30pm -</u> <u>Staffroom</u> | 29 July | 30 July <u>Choral Festival</u> <u>Rehearsal</u> | 31 July | 1 August |
| 3 | 4 August NAIDOC DAY | 5 August 100 days of Kindergarten <u>Alma Family</u> <u>playgroup</u> | 6 August <u>Choral Festival</u> | 7 August Broken Hill Field Events | 8 August Broken Hill Track Events |
| 4 | 11 August | 12 August <u>Alma Family</u> <u>playgroup</u> | 13 August | 14 August | 15 August <u>No way to</u> <u>Bullying Day</u> |
| 5 | 18 August <u>Mundi Mundi</u> | 19 August <u>Mundi Mundi</u> <u>Alma Family</u> <u>playgroup</u> | 20 August <u>Mundi Mundi</u> <u>SRC PJ DAY</u> | 21 August <u>Mundi Mundi</u> <u>Stage 3 Parent</u> <u>Meeting</u> | 22 August <u>Book Week</u> <u>Parade</u> |
| 6 | 25 August <u>P&C Meeting</u> <u>5.30pm-</u> <u>Staffroom</u> <u>Kinder Kitchen</u> <u>Lesson</u> | 26 August <u>Transition- Alma</u> <u>Allstars</u> | 27 August <u>Kinder Garden</u> <u>Lesson</u> | 28 August <u>Stage 1 Kitchen</u> <u>and Garden</u> <u>Lessons</u> | 29 August |
| 7 | 1 September <u>Stage 3</u> <u>Excursion</u> | 2 September <u>Stage 3</u> <u>Excursion</u> | 3 September <u>Stage 3</u> <u>Excursion</u> | 4 September <u>Stage 3</u> <u>Excursion</u> | 5 September <u>Father's Day</u> <u>Stall</u> <u>Barrier Athletics</u> |
| 8 | 8 September | 9 September <u>Transition- Alma</u> <u>Allstars</u> | 10 September | 11 September | 12 September |
| 9 | 15 September <u>Stewart House</u> | 16 September <u>Transition- Alma</u> <u>Allstars</u> <u>Stewart House</u> | 17 September <u>Stewart House</u> | 18 September <u>Stewart House</u> | 19 September <u>Stewart House</u> |
| 10 | 22 September <u>Stewart House</u> <u>Kinder Kitchen</u> <u>Lesson</u> | 23 September <u>Stewart House</u> <u>Transition- Alma</u> <u>Allstars</u> <u>Gala Day-</u> <u>Basketball/Netball</u> | 24 September <u>Stewart House</u> <u>Kinder Garden</u> <u>Lesson</u> <u>Gala Day-</u> <u>Basketball/Cricket</u> | 25 September <u>Stewart House</u> <u>Stage 1</u> <u>Kitchen/Garden</u> | 26 September <u>Stewart House</u> |

RESPECTFUL RESPONSIBLE RESILIENT

WEEK 10 TERM 2 ASSEMBLY SUPER STARS CONGRATULATIONS!!

Tyler McLeod
Rihannon Heffernan
Seth Watson
Calex Morris
Ivi Tuipulotu
Nevaeh Lawrence
Shamarl Powell

Jarrah Barker
Sienna Adams
Chet Jones
Alakia Bates
Jacob Westley
Peter Black
Hugh Black

Harry McBride
Tony Heffernan
Rory Charnock
Isla Harvey
Stephanie Dennis
Taite Olds-Kemp
Charlie Slattery

Emily Nelson
Mae Maxwell
Javi Reberger
Poppy Clark-Miller
Austin Bourke
Piper Matthews



Dear parents, guardians and carers

Re: Nationally Consistent Collection of Data on School Students with Disability (NCCD)

Every year, all schools in Australia participate in the Nationally Consistent Collection of Data on School Students with Disability (NCCD). The NCCD process requires schools to identify information already available in the school about supports provided to students with disability. These relate to legislative requirements under the *Disability Discrimination Act 1992* and the Disability Standards for Education 2005, in line with the *NCCD guidelines* (2019).

Information provided about students to the Australian Government for the NCCD includes:

- year of schooling
- category of disability: physical, cognitive, sensory or social/emotional
- level of adjustment provided: support provided within quality differentiated teaching practice, supplementary, substantial or extensive.

This information assists schools to:

- formally recognise the supports and adjustments provided to students with disability in schools
- consider how they can strengthen the support of students with disability in schools
- develop shared practices so that they can review their learning programs in order to improve educational outcomes for students with disability.

The NCCD provides state and federal governments with the information they need to plan more broadly for the support of students with disability.

The NCCD will have no direct impact on your child and your child will not be involved in any testing process. The school will provide data to the Australian Government in such a way that no individual student will be able to be identified – the privacy and confidentiality of all students is ensured. All information is protected by privacy laws that regulate the collection, storage and disclosure of personal information. To find out more about these matters, please refer to the [Australian Government's Privacy Policy](https://www.education.gov.au/privacy-policy) (<https://www.education.gov.au/privacy-policy>).

Further information about the NCCD can be found on the [NCCD Portal](https://www.nccd.edu.au) (<https://www.nccd.edu.au>).

If you have any questions about the NCCD, please contact the school.

Kind regards

Ruby Church
Relieving Principal