



Alma Public School

Telephone: (08) 8088 2181

Email: alma-p.school@det.nsw.edu.au

Newsletter

Term 2 Week 4 Monday 19 May 2025

Visit our website: www.alma-p.schools.nsw.gov.au or download the Sentral for Parent Portal through the Apple App Store or Android Google Play Market



INSIDE THIS ISSUE: From the Relieving Principal, Assesmbly Award Winners, Enrolling Now Kindergarten 2026, Excursion Parent Survey, NSW Public Schools Student Survey, Student Bus Policy, Stage 2 & Stage 3 Excursion Payment Plans, what's on this week at Alma PS?, Term 2 School Assembly Roster, Pulse Broken Hill, Term 2 Calendar, Community News, Mother's Day Photos

From the Relieving Principal

Kindergarten Enrolments

We are now taking kinder enrolments for 2026. Please come into the office if you have any questions or enrol online if you are in our zone. Our kinder transition program will be starting in Term 3 so stay tuned for further information.



Pulse

K-2 and some students from 3-6 are off to Pulse this week at the YMCA and Broken Hill Civic centre.

Students and teachers in Kindergarten to Year 2 will experience three 60-minute workshops (one on each day of the program) giving them exciting experiences in music, dance and drama. Workshop footage will be played on screen during the Year 3-12 performance.

Students and teachers in 3-6 will work with professional dance tutors to develop their dance technique and creativity. Some students will work with tutors to devise and perform a movement piece set to music that develops students' dramatic skills.

3-6 students that attend the workshop must attend the afternoon performance. Students are to be dropped off at the Civic Centre at 4.45pm to the stairs on the right hand side of the front doors (see map) and be collected at the same spot at approximately 6pm.

Tickets are available at <https://bit.ly/PulseBH2025>

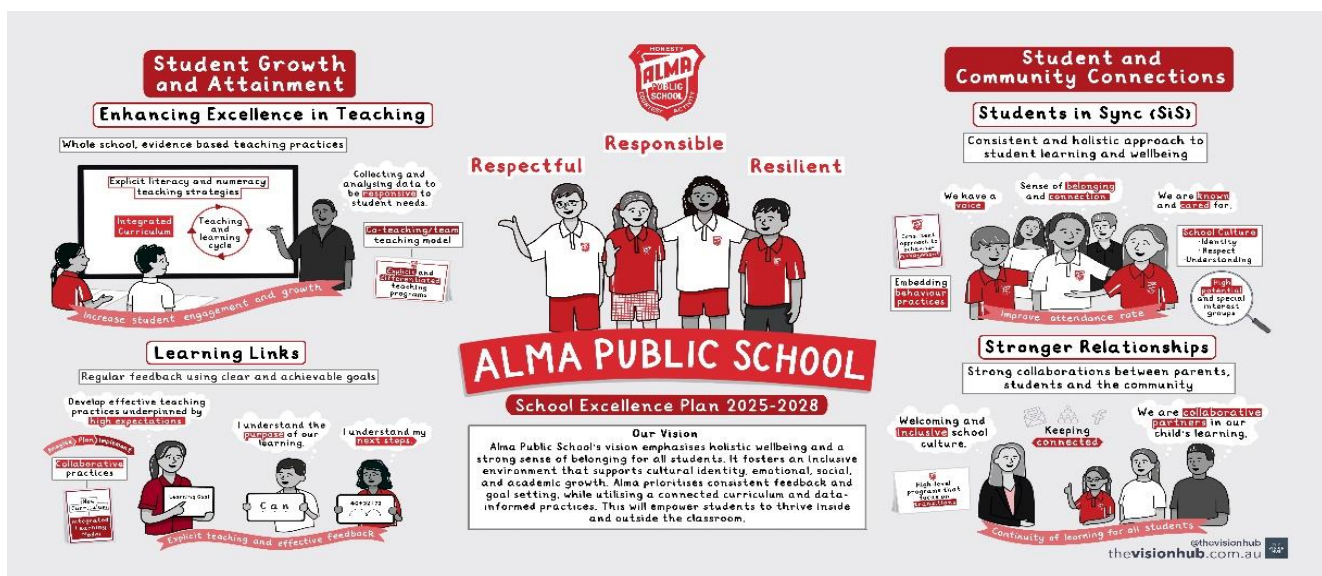
Year 1 Numeracy Trial

A number screening check is being trialled in some NSW Department for Education schools in Term 2, 2025. Year 1 students in participating government schools will complete the check during May and June.

The number screening check is a short, simple assessment that tells teachers how your child is progressing in numeracy. This trial will be administered during normal school hours in one short session. Teachers will ask your child questions individually and record their answers.

If you do not want your child to take part in the trial, or have any further questions, please speak to your child's class teacher.

Our 2025-2029 School Plan



Ngayi Alma, we start our week of learning by acknowledging the Wilyakali people. The Wilyakali people are the traditional owners of the land we are on today. On behalf of Alma Public School, we remember Wilyakali people from the past, present and emerging. Their country, our country and our School. We hope you have a great week of learning.

Congratulations to our Assembly Award winners for Week 2!

Amelia Cumming
Seth Schultz
Georgia Fernando
Zoe Millstead
Jaiidah James
Angus Corby
Dawson Quin
Xavier Dickson
Sophie Ellis
Alfie McKellar
Laylah Dodd
Jaxx Matthews
Toby Lyons
Lillian Bennett
Rhylee Thomas
Na'asoni Tuipulotu
Laykin Cullen
Brooklyn Mannion
Noah Owen
Huxley Nunn
Rowdy Chesworth
George Garrick
Zara Hipwell
Estelle Fraser
Campbell Brymer
Emily Nelson



BROKEN HILL PUBLIC SCHOOLS

ENROLLING NOW FOR KINDERGARTEN 2026

All public schools in Broken Hill
are now accepting enrolments
for Kindergarten 2026.

Visit your zoned public school to
pick up an enrolment pack, or
enrol your child online at:
<https://ehub.enrol.education.nsw.gov.au>

We are committed to ensuring
that every student learns,
grows and belongs in an
outstanding education system.



Alma Public School
Broken Hill Public School
Broken Hill North Public School
Burke Ward Public School
Morgan Street Public School
Railway Town Public School



Excursion Parent Survey

Due to the increasing cost of living and the declining interest in the Stage 2 and Stage 3 long distance excursions, Alma is seeking your feedback on the future of our school excursions. We are conducting a survey to gather your thoughts and preferences, to ensure that future trips are both affordable and enjoyable for all. Please use the following link to complete the survey. Your input is invaluable to us! Use the link below or scan the QR code to complete the survey.

<https://forms.gle/6pd6vA1qusGGnJdg7>



NSW Public Schools Student Survey

In Term 2, we are offering our students the opportunity to participate in the NSW Public Schools Student Survey. The survey gives students the chance to share their thoughts and feelings about life at school, including questions about their engagement, learning experiences and wellbeing at school.

Hearing directly from our students will help us understand what's working well and where improvements can be made to our school. The survey is confidential, takes around 10 to 15 minutes to complete, and will be conducted online during school hours.

Participation is voluntary. If you prefer your child not to participate, please complete the opt-out consent form, which was sent home last week, and return it to the school by Friday 23 May 2025. Further information about the survey is available at <https://education.nsw.gov.au/npss>

Student Bus Policy

In NSW, school bus policies focus on student safety and conduct during travel. School buses are primarily for students, with parents sometimes accompanying children, especially during initial rides. Students are expected to follow a code of conduct, including showing travel passes, following safety instructions, and maintaining respectful behaviour. Bus operators and drivers have responsibilities to ensure student safety and address misbehaviour, while schools and Transport for NSW also play roles in managing student behaviour and enforcing the code of conduct. Students are reminded that they must follow regulations when travelling between home and school using public transport. All students must behave in a manner that ensures both their comfort and safety and that of other passengers.

Disobeying these rules may lead to:

- the withdrawal of school travel passes
- banning students from travelling on public transport
- police prosecution and court action.

Stage 2 Lake Cullulleraine & Mildura Excursion Payment Plans

Instalment 1 11 April \$40.00	Instalment 2 2 May \$40.00	Instalment 3 16 May \$40.00	Instalment 4 30 May \$40.00	Instalment 5 13 June \$40.00
-------------------------------------	----------------------------------	-----------------------------------	-----------------------------------	------------------------------------

Stage 3 Benigo & Ballart Excursion Payment Plans

Instalment 1 2 May \$50.00	Instalment 2 16 May \$50.00	Instalment 3 30 May \$50.00	Instalment 4 13 June \$50.00
Instalment 5 27 June \$50.00	Instalment 6 25 July \$50.00	Instalment 7 8 August \$50.00	Instalment 8 22 August \$50.00

T2W4 What's on this week at Alma PS?



Garden week stage 2 & 3

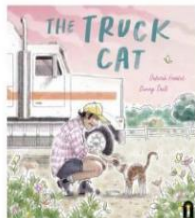
Monday- Broken Hill Cross Country for representing students

Tuesday- Pulse K-2 and participating stage 2 & stage 3 students

Wednesday- Pulse participating stage 2 & Stage 3 students
Simultaneous story time - "The truck cat"

Thursday- Pulse Participating stage 2 & Stage 3 students
Pulse performance at the Civic centre -Participating stage 2 & stage 3 students

Friday- Assembly - 5/6 G assembly item



Coming Up

Week 5- Reconciliation March stage 3
Eddie Woo excursion stage 2

Week 6- P&C meeting
Stage 2 camp meeting
world environment day



We speak and listen nicely



A concert not to be missed!

The Broken Hill Civic Orchestra presents

"A Winter Warm-up"

From Bach to Beethoven to Brahms



in the historic **WESLEY CHURCH**
corner of Sulphide and Cobalt Streets, opposite Sturt Park

2:30pm Sunday
1st June 2025

Concert entry by donation



Broken Hill Public Schools are proud to present Pulse Broken Hill with help from the NSW DoE Arts Unit.

Tickets for Pulse Broken Hill will be sold through the Broken Hill Civic Centre box office.

Pulse Broken Hill 2025

Thursday 22 May 2025, 5:00 PM

Tickets can be purchased in the following ways:

Phone: ringing the Civic Centre Box Office Monday to Friday 10:00 am to 4:00 pm.

Ph: 08 8080 3575.

Online: visit the following link anytime to purchase online <https://bit.ly/PulseBH2025>

Visitor Information Centre: in-person, cash or card sales at the Visitor Information Centre,
23-27 Bromide St, Broken Hill

Open Monday to Friday 9:00 am to 4:00 pm, Saturday and Sunday 10:00 am to 2:00 pm.

Pricing

Adult: \$8.00 Child (12 and under): \$5.00

Children under 2 years of age are admitted free with a paying adult. 'Child Under 2' tickets must be booked by calling the Box Office on 08 8080 3575.

Term 2 Calendar 2025

Week 4	<u>Monday 19 May</u> Broken Hill Cross Country	<u>Tuesday 20 May</u> Pulse K-2 Pulse 3-6	<u>Wednesday 21 May</u> Pulse 3-6	<u>Thursday 22 May</u> Pulse 3-6	<u>Friday 23 May</u> <u>Assembly 5/6G</u>
Week 5	<u>Monday 26 May</u> NSW Public School Student Survey 3-6	<u>Tuesday 27 May</u>	<u>Wednesday 28 May</u> Stage 2 Excursion Eddie woo Stage 3 Reconciliation March	<u>Thursday 29 May</u> Reconciliation Day	<u>Friday 30 May</u> Barrier Cross Country
Week 6	<u>Monday 2 June</u> Kinder Walking Excursion	<u>Tuesday 3 June</u>	<u>Wednesday 4 June</u> Stage 2 Camp Meeting	<u>Thursday 5 June</u> World Environment Day	<u>Friday 6 June</u> <u>Assembly 3/4A</u> Stage 2 Excursion Medical Notes to be returned
Week 7	<u>Monday 9 June</u> Public Holiday NO SCHOOL	<u>Tuesday 10 June</u>	<u>Wednesday 11 June</u>	<u>Thursday 12 June</u>	<u>Friday 13 June</u> Stage 2 Excursion to be paid in full \$230
Week 8	<u>Monday 16 June</u>	<u>Tuesday 17 June</u>	<u>Wednesday 18 June</u> Stage 2 Excursion	<u>Thursday 19 June</u> Stage 2 Excursion	<u>Friday 20 June</u> Stage 2 Excursion <u>Assembly 3/4M</u>
Week 9	<u>Monday 23 June</u> Reports get sent home Parent Teacher Interviews	<u>Tuesday 24 June</u> Alma Athletics Carnival	<u>Wednesday 25 June</u> Parent Teacher Interviews	<u>Thursday 26 June</u> Parent Teacher Interviews	<u>Friday 27 June</u>
Week 10	<u>Monday 30 June</u> Parent Teacher Interviews	<u>Tuesday 1 July</u> Gala Day Boys- AFL <u>Girls- Soccer</u>	<u>Wednesday 2 July</u> Parent Teacher Interviews Gala Day Boys- Soccer Girls-AFL	<u>Thursday 3 July</u> Parent Teacher Interviews	<u>Friday 4 July</u> LAST DAY OF TERM 2 <u>Assembly Choir</u>



BROKEN HILL SCIENCE FAIR

KIDS FREE!
18 YEARS+ & ADULTS \$10.00

SUNDAY 25TH MAY
9:30am-12:30pm OR 1:00pm-4:00pm
GARY RADFORD PAVILION
BROKEN HILL RACECOURSE

BOOK NOW

WWW.THESCIENCECOLLECTIVE.COM

Supporting Sponsor: **TRONOX**

MAJOR SPONSOR: **FOUNDATION BROKEN HILL**

Supporting Sponsor: **agl**

Activities: SCIFIBRI FIRE & FROTH, BLUEGUM BILL, IgniteVR, ELECTRO CIRCUITS, Marine Discovery Centre, TODDLERS CORNER



Free Stepping Stones Parenting Webinars Triple P

For parents of primary school aged children with disabilities

Attend one or attend all three! Please register for each session separately using the link or QR code.

WEBINARS

- 1 Positive Parenting for children with a disability**
 - Having positive learning opportunities.
 - Taking a planned approach to discipline.
 - Having reasonable expectations.
 - Looking after yourself as a parent.

Date: Wednesday 28th May 2025
Time: 12:00pm-1:30pm

1. REGISTER NOW!
- 2 Helping your child reach their potential**
 - Choosing a skill to teach.
 - Choosing rewards.
 - Using effective teaching strategies.

Date: Wednesday 4th June 2025
Time: 12:00pm-1:30pm

2. REGISTER NOW!
- 3 Changing Problem Behaviour into Positive Behaviour**
 - How to deal with challenging behaviour that interferes with your child's learning, such as meltdowns, aggression, being disruptive.
 - How to teach more adaptive ways to behave and cope with emotions.

Date: Wednesday 11th June
Time: 12:00pm-1:30pm

3. REGISTER NOW!

Contact: Jodie Caruana
School-Link
schln-chw
schoolink@health.nsw.gov.au


The Sydney Children's Hospitals Network



Join us
**BROKEN HILL
COMMUNITY EVENT**

Date: Saturday 14 June | 5:30pm - 8:30pm
Venue: O'Neil Park Sporting Complex, Broken Hill
What: BBQ, Cardio Tennis, POP Tennis, social play, music, family fun & more! *Free event!*

Proudly supported by


Do you have a health care card? You could be eligible for Saver Plus.

For every dollar you save, you'll get a dollar from ANZ to spend on educational costs, up to \$500.

To join, you need to meet all of these requirements:

- ✓ Be 18 years or older
- ✓ Have a current Health Care or Pensioner Concession Card
- ✓ Have a child in school, starting school next year, or be studying yourself
- ✓ Get a regular income (can be you or your partner)
- ✓ Agree to join in free online financial education workshops

saverplus
1300 610 355 saverplus.org.au



NATIONAL RECONCILIATION WEEK 2025

Bridging Now to Next

#NRW2025
RECONCILIATION.ORG.AU



WEDNESDAY 28 MAY 2025 | 11.30am - 1.30pm

March departs Town Square at 11:30am followed by Sea of Hands, activities & community sausage sizzle in Sturt Park

RECONCILIATION MARCH and COMMUNITY BBQ
www.brokenhill.nsw.gov.au/events

Permission Notes and Payments to be returned	
• Stage 3 Reconciliation Notes	
• Stage 2 Eddie Woo Permission Note	
• Year 6 Shirt Payment	
• Stage 2 Lake Cullulleraine & Mildura Payment \$230	
• Stage 3 Ballart & Benigo Payment \$440	
• Stage 2 Medical Excursion Note returned by 6.06.25	

